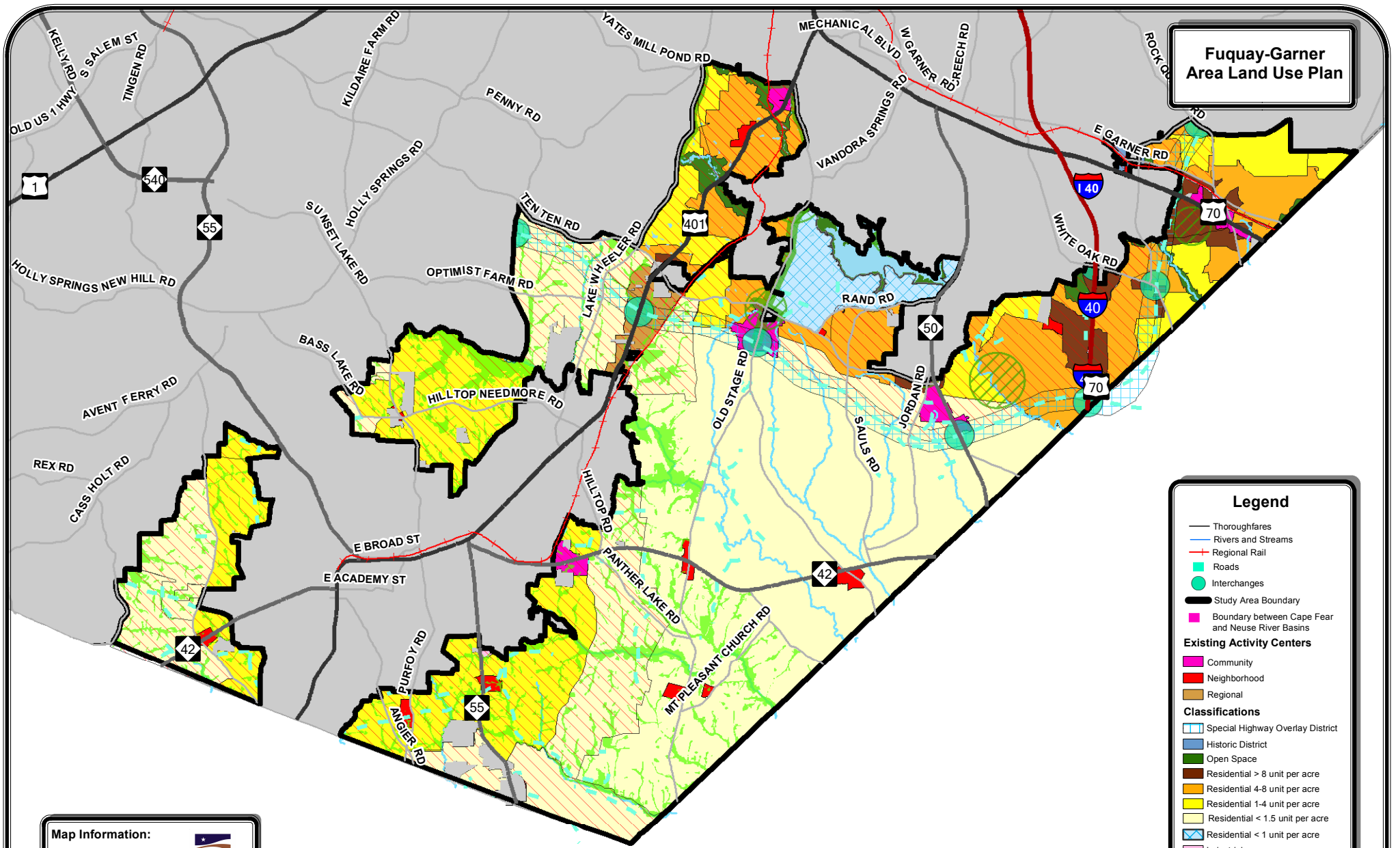


Fuquay-Garner Area Land Use Plan



Legend

- Thoroughfares
- Rivers and Streams
- Regional Rail
- Roads
- Interchanges
- Study Area Boundary
- Boundary between Cape Fear and Neuse River Basins

Existing Activity Centers

- Community
- Neighborhood
- Regional

Classifications

- Special Highway Overlay District
- Historic District
- Open Space
- Residential > 8 unit per acre
- Residential 4-8 unit per acre
- Residential 1-4 unit per acre
- Residential < 1.5 unit per acre
- Residential < 1 unit per acre
- Industrial
- Open Space
- Significant Natural Resource
- Planned Growth Area
- Outside Study Area
- Water Bodies

Map Information:

Adoption Date:
Monday, March 15, 2004

Amended:
March 02, 2016
September 18, 2006
February 20, 2006

This Map: S:\GIS\MXD\ALUP_FuquayGarner\FuquayGarnerALUP_A-size.mxd
 Created by Wake County
 Wake County Planning Department
 Jul 06, 2011