



Special Session of District and Superior Court

Commemorating the Opening of the
Wake County Justice Center

Monday, July 1, 2013

Wake County Justice Center
300 South Salisbury Street
Raleigh, North Carolina



EN BANC JUDICIAL CEREMONY PROGRAM

July 1, 2013

JUDGES PRESIDING

THE HONORABLE DONALD W. STEPHENS,
SENIOR RESIDENT SUPERIOR COURT JUDGE

THE HONORABLE ROBERT B. RADER,
CHIEF DISTRICT COURT JUDGE

REMARKS

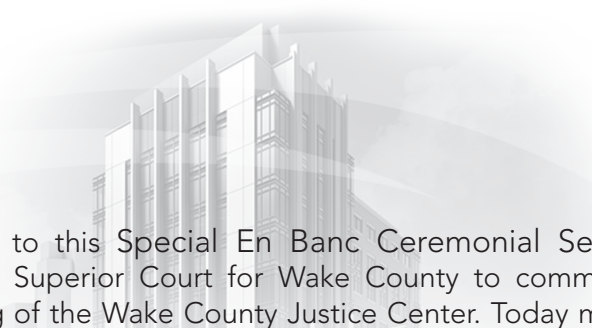
THE HONORABLE SARAH F. PARKER,
CHIEF JUSTICE OF THE NORTH CAROLINA
SUPREME COURT

THE HONORABLE JOHN MARTIN,
CHIEF JUDGE OF THE NORTH CAROLINA
COURT OF APPEALS

ROBERT L. MCMILLAN, JR.

WADE SMITH





Welcome to this Special En Banc Ceremonial Session of District and Superior Court for Wake County to commemorate the opening of the Wake County Justice Center. Today marks the first time in the history of Wake County that the two courts have come together in joint session which is a reflection of the strong working relationship that exists among the various levels of court in Wake County and their commitment to the proper administration of justice. Today also represents the culmination of years of careful and deliberate planning by county and court officials that have resulted in this remarkable state-of-the-art court and government facility known as the Wake County Justice Center.

The Justice Center combines contemporary neo-Gothic architectural design elements with 21st Century technology and is designed to enable Wake County to meet the needs of the Tenth Judicial District for the next 30–50 years. The Justice Center contains approximately 577,000 square feet of space within an 11-story structure. The high rise portion of the building, commonly referred to as the court tower, contains 19 new courtrooms, and associated support spaces, with the capacity to add 4 additional courtrooms on the sixth floor in the future. The building is equipped with modern high speed elevator systems to provide improved movement for court officials, staff and the general public. A total of 17 elevators serve the Justice Center along with escalators on the first three floors.

The offices of the Clerk of Superior Court, Superior Court Judges, District Court Judges, District Attorney, Public Defender, Jury Assembly, Court Reporters and Community Corrections are all located within the Justice Center. The Justice Center also provides public meeting space for the Board of Commissioners and administrative space for the County Manager, County Attorney, Finance and Budget Operations, Register of Deeds, Revenue/ Assessor and various other support spaces.




Justice Center Planning & Development

In the late 1990's county and court officials began to address future court needs by forming an exploratory committee to develop a master plan as a road map for future court construction. In late 2005, the Board of Commissioners endorsed a 30 year Master Plan to meet the statutory requirements to provide adequate judicial and public records facilities for Wake County. The following year the Blue Ribbon Committee on the Future of Wake County recommended that the County proceed in accordance with the Master Plan to develop a new criminal courthouse located near the outdated, overcrowded existing courthouse in downtown Raleigh.

A process was subsequently initiated to select a highly qualified team of designers for a new Wake County Justice Center. After completing a competitive evaluation process, a partnership comprised of two contractors with local and national experience was chosen to build the new Justice Center: Barnhill Contracting Company and Balfour Beatty Construction. A similar process resulted in the selection of two nationally known architectural firms: HOK and O'Brien Atkins.

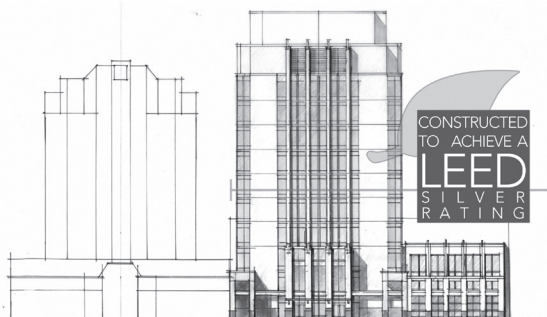
A Project Steering Committee was formed in 2007 and members held work sessions with designers and contractors. The Raleigh Planning/Urban Design Center, Downtown Raleigh Alliance, Wake County Bar Association and N.C. State University School of Design actively participated in the design process. The Steering Committee held public information sessions about the proposed Justice Center around the county and many presentations were made at Board of Commissioners' public meetings throughout 2008 and 2009. Input gathered from these groups was integrated into the design of the project and shared with the Board at key stages of the design process.

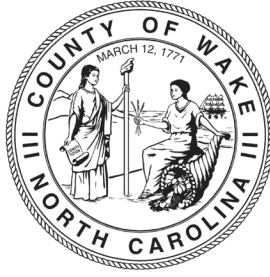


Upon completion of the new Davie Street Parking Deck in the fall of 2009, demolition of the Garland Jones Building, the Judicial Services Building and the old Wake County Parking Deck began. Site excavation then followed in March of 2010 with the Groundbreaking Ceremony being held on May 10, 2010. Erection of the structural steel proceeded on schedule and was completed and commemorated with the traditional Topping Out Ceremony in February 2011. The last of three tower cranes was removed in 2012 and the building is now complete and ready for occupancy. Under the leadership of Project Manager Phil Stout, the Justice Center was completed ahead of schedule, without any major accident or injury and over 30 million dollars under budget.

Environmentally Friendly

The Wake County Justice Center is expected to receive Silver LEED certification from the U.S. Green Building Council. Leadership in Energy and Environmental Design (LEED) is the recognized standard for measuring building sustainability in the United States and many countries around the world. The Justice Center features many energy saving and environmentally mindful features that will reduce the ongoing operating costs. The project also incorporated regional materials to reduce transportation costs.





Wake County District Court Judges

ROBERT B. RADER

JAMES R. FULLWOOD	ERIC CRAIG CHASSE
JENNIFER M. GREEN	NED W. MANGUM
MONICA M. BOUSMAN	JACQUELINE L. BREWER
DEBRA S. SASSER	ANNA E. WORLEY
JENNIFER J. KNOX	MARGARET P. EAGLES
VINCE M. ROZIER, JR.	KEITH O. GREGORY
KRIS D. BAILEY	MICHAEL J. DENNING
LORI G. CHRISTIAN	LOUIS B. MEYER, III
CHRISTINE M. WALCZYK	DANIEL J. NAGLE

Wake County Superior Court Judges

DONALD W. STEPHENS

RESIDENT JUDGES	SPECIAL JUDGES
HOWARD E. MANNING, JR.	JOHN R. JOLLY, JR.
MICHAEL R. MORGAN	WILLIAM R. PITTMAN
PAUL C. RIDGEWAY	SHANNON R. JOSEPH
PAUL G. GESSNER	LUCY N. INMAN
G. BRYAN COLLINS, JR.	REUBEN F. YOUNG
	KENDRA HILL

Former Wake County Judges

DISTRICT COURT

GEORGE F. BASON	1968 - 1991
EDWIN S. PRESTON	1968 - 1974
S. PRETLOW WINBORNE, JR.	1968 - 1978
N. F. RANSDALL	1968 - 1974
HENRY V. BARNETTE, JR.	1968 - 1982
STAFFORD G. BULLOCK	1974 - 1994
GEORGE R. GREENE	1974 - 1989
WILLIAM CARLOS MURRAY	1975 - 1976
JOHN HILL PARKER	1976 - 1982
RUSSELL G. SHERRILL, III	1979 - 2000
PHILLIP O. REDWINE	1981 - 1986
ACIE L. WARD	1982 - 1982
NARLEY L. CASHWELL	1982 - 1986
LOUIS W. PAYNE	1982 - 1998
WILLIAM A. CREECH	1982 - 1996
JOYCE A. HAMILTON	1986 - 2007
FRED M. MORELOCK	1986 - 2000
JERRY W. LEONARD	1986 - 1994
DONALD W. OVERBY	1988 - 1996
ANNE B. SALISBURY	1990 - 2010
WILLIAM C. LAWTON	1991 - 2004
MICHAEL R. MORGAN	1994 - 2004
SUSAN O. RENFER	1994 - 1997
ANNE MARIE CALABRIA	1996 - 2002
PAUL G. GESSNER	1996 - 2006
ALICE C. STUBBS	1997 - 2005
KRISTIN H. RUTH	1998 - 2012
CRAIG CROOM	1999 - 2011
JANE P. GRAY	2002 - 2012
SHELLEY H. DESVOUSGES	2003 - 2008
DONNA S. STROUD	2004 - 2006
ERIN MULLIGAN GRABER	2012 - 2012

SUPERIOR COURT

W.S. ROBINSON	1900 - 1904
WILLIAM R. ALLEN	1904 - 1910
FRANK A. DANIELS	1910 - 1915
C.M. COOKE	1915 - 1916
ALBERT L. COX	1916 - 1917
T.H. CALVERT	1917 - 1926
W.C. "BUCK" HARRIS	1926 - 1954
WILLIAM Y. BICKETT	1954 - 1973
JAMES H. POU BAILEY	1965 - 1985
A. PILSTON GODWIN	1967 - 1982
DONNIE SMITH	1973 - 1988
EDWIN S. PRESTON, JR.	1975 - 1988
ROBERT FARMER	1977 - 1998
HENRY V. BARNETTE, JR.	1983 - 2000
I. BEVERLY LAKE, JR.	1985 - 1990
SAMUEL T. CURRIN	1987 - 1990
CARLTON FELLERS	1987 - 1989
JACK B. CRAWLEY	1988 - 1989
GEORGE R. GREENE	1989 - 1995
NARLEY L. CASHWELL	1991 - 2006
STAFFORD G. BULLOCK	1994 - 2004
ABRAHAM P. JONES	1995 - 2012
EVELYN W. HILL	2000 - 2006
JACK JENKINS	2001 - 2003
RIPLEY E. RAND	2002 - 2011
CRESSIE H. THIGPEN, JR.	2008 - 2010
CRAIG CROOM	2011 - 2012

Justice Center Project Steering Committee

PHIL STOUT, CHAIR

DIRECTOR, WAKE COUNTY FACILITIES DESIGN & CONSTRUCTION

SUSAN BANKS

CLERK, WAKE COUNTY BOARD OF COMMISSIONERS

HOWARD CUMMINGS

WAKE COUNTY FIRST ASSISTANT DISTRICT ATTORNEY

JOE DURHAM

DEPUTY WAKE COUNTY MANAGER

HONORABLE N. LORRIN FREEMAN

CLERK OF SUPERIOR COURT

CHARLES FRIDDLE

WAKE COUNTY GIS MANAGER

KENN GARDNER

WAKE COUNTY COMMISSIONER 2000 – 2008

DAVID L. GOODWIN

DIRECTOR, WAKE COUNTY GENERAL SERVICES ADMINISTRATION

MARCUS KINRADE

DIRECTOR, WAKE COUNTY REVENUE/ASSESSMENT

HONORABLE ROBERT B. RADER

CHIEF DISTRICT COURT JUDGE

HONORABLE RIPLEY E. RAND

SUPERIOR COURT JUDGE 2002 – 2010

HONORABLE LAURA M. RIDDICK

WAKE COUNTY REGISTER OF DEEDS

SCOTT WARREN

WAKE COUNTY ATTORNEY

LARRY WOOD

CHIEF OF STAFF, WAKE COUNTY SHERIFF'S OFFICE

