



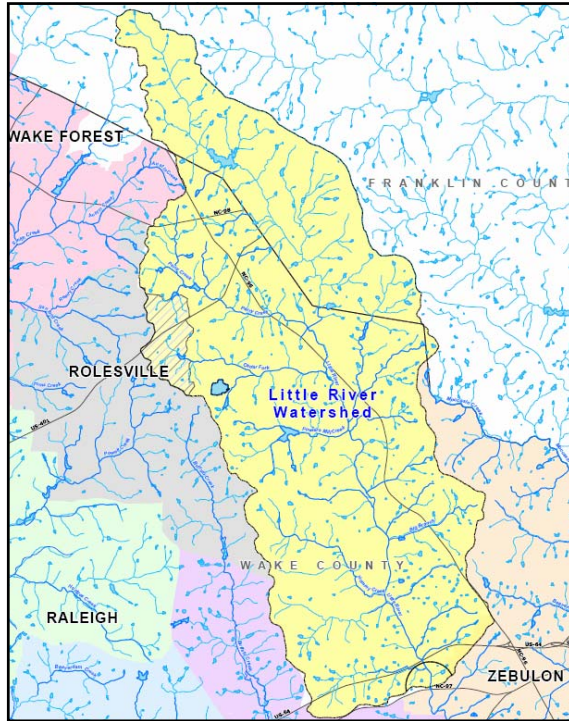
Wake County Stormwater Management Task Force Meeting #13

May 10, 2007

Cary • Fuquay-Varina • Garner • Holly Springs • Knightdale •
Morrisville • Raleigh • Rolesville • Wake County • Wake Forest •
W **CDM** bulon • Apex • Cary • Fuquay-Varina • Garner • Holly
S Knightdale • Morrisville • Raleigh • Rolesville • Wake County •
Wake Forest • Wendell • Zebulon • Apex • Cary • Fuquay-Varina • Garner

Meeting Agenda

- Little River Reservoir Plan
 - Presentation by Joe Durham, Wake County
- Continue Presentation of DRAFT Recommendations
 - Feedback and Discussion by Task Force
- Wrap-Up and Next Steps



Little River Reservoir Plan

Presentation by:
Joe Durham
Wake County
Deputy Manager

Meeting Agenda

- Development of Draft Recommendations
- Presentation of DRAFT Recommendations
 - Feedback and Discussion by Task Force
- Wrap-Up and Next Steps

Outline of DRAFT Recommendations

Proposed Rec. #	Proposed DRAFT Recommendations	# of Objectives Addressed	Areas of Concern			
			Structural Flooding	Nuisance Flooding	Sediment	Water Quality
1	Hydrologic and Hydraulic Modeling for Build-Out Conditions	10	✓	✓	✓	✓
2	Collaboration on Phase II Public Education Programs	10	✓	✓	✓	✓
3	Enhance Sediment and Erosion Control Programs County-wide	9			✓	✓
4	Implement County-Wide Call Center for Stormwater Issues	7	✓	✓	✓	✓
5	Post Construction Stormwater Runoff Controls for Flood Events	5	✓	✓		
6	Risk-based Approach to Stormwater System Maintenance	8	✓	✓		✓
7	Collaboration with on NDPES Phase II Minimum Measures	7			✓	✓
8	Maintenance Plan for NCDOT Stormwater Infrastructure	8	✓	✓		✓
9	Ordinance Modifications to Reduce Impervious Surface	9	✓	✓		✓
10	Maintenance and Inspection of On-Site Wastewater Systems	7				✓
11	Water Quality Monitoring	8			✓	✓

#4 – County-wide Call Center for Stormwater Issues

- **What?**
 - One-stop call center for stormwater issues and complaints that would serve all municipalities
 - Calls would be screened and discharged to appropriate personnel for further evaluation
- **Why?**
 - Easier to promote one contact point and more cost-effective to run
 - Reduce burden on municipal staff to allow more time for solving problems

#5 – Post Construction Stormwater Runoff Controls for Flood Events

- **What?**
 - Additional requirement (in some cases) to add a flood control element (10-yr or greater storm) to existing water quality control requirements (NPDES Phase II req. for 1-yr storm)
- **Why?**
 - Flood control was a high priority objective for Task Force and Managers
 - Opportunity to establish a uniform, minimum design standard that addresses quantity and quality concerns

#6 – Risk-Based Approach to Stormwater System Maintenance

- **What?**
 - Identifies highest priority stormwater infrastructure and facilities that should be targeted for routine inspection and maintenance
- **Why?**
 - Maintenance was a high priority tool for both the Task Force and Managers
 - Some communities do not have the resources to pro-actively maintain the system throughout the year
 - Get the most “bang for your buck” on maintenance

#7 – Collaboration with Wake County on NPDES Phase II Minimum Measures

- **What?**
 - County would offer to provide Phase II stormwater services to Towns; similar to Charlotte-Mecklenburg organization model
- **Why?**
 - Smaller Towns do not currently have existing staff or expertise to implement
 - Can piggy-back on to S&E program
 - Most cost effective for one regional group to provide than for multiple communities to implement the same individual programs

#8 – Maintenance Plan for NCDOT Stormwater Infrastructure

- **What?**
 - Inventory of high-priority NCDOT structures where routine maintenance is necessary to maximize performance
 - Develop action plan for how the maintenance will be performed
- **Why?**
 - Maintenance was a high priority tool for both the Task Force and Managers
 - Recognizes that NCDOT has limited resources to inspect all of its infrastructure

#9 – Ordinance Modifications to Reduce Impervious Surface

- **What?**
 - Review and modify existing ordinances to reduce the amount of impervious surface prescribed for new development
- **Why?**
 - Provides measure for runoff control at the source rather than through mitigation
 - High priority tool for Task Force and Managers
 - Can provide flexibility for developers during design process without sacrificing overall benefits

#10 – Maintenance and Inspection of On-site Wastewater Systems

- **What?**
 - Evaluate alternatives and implement effective maintenance and inspection procedures for on-site wastewater systems
 - Develop a database and tracking system for these systems
- **Why?**
 - Required by Session Law to have a program that addresses this issue
 - EPA recognizes leaky systems as an illicit discharge

#11 – Water Quality Monitoring

- **What?**
 - County-wide network encompassing the full range of water quantity and quality conditions
 - Will supplement existing programs by adding monitoring stations, enhancing data collection/reporting, and providing an inter-governmental approach
- **Why?**
 - Evaluation of baseline conditions
 - Monitor water quality trends related to growth
 - Use to set and evaluate performance goals

Meeting Agenda

- Development of Draft Recommendations
- Presentation of DRAFT Recommendations
 - Feedback and Discussion by Task Force
- **Wrap-Up and Next Steps**

**Thank You For Your
Time And Interest!**



CDM