

Definitions

Intake: Animals admitted to the Animal Center. These include animals surrendered by the general public, picked up by Animal Control and animals born at the Center.

Adoption: Includes animals adopted to new homes and transferred to qualifying rescue groups.

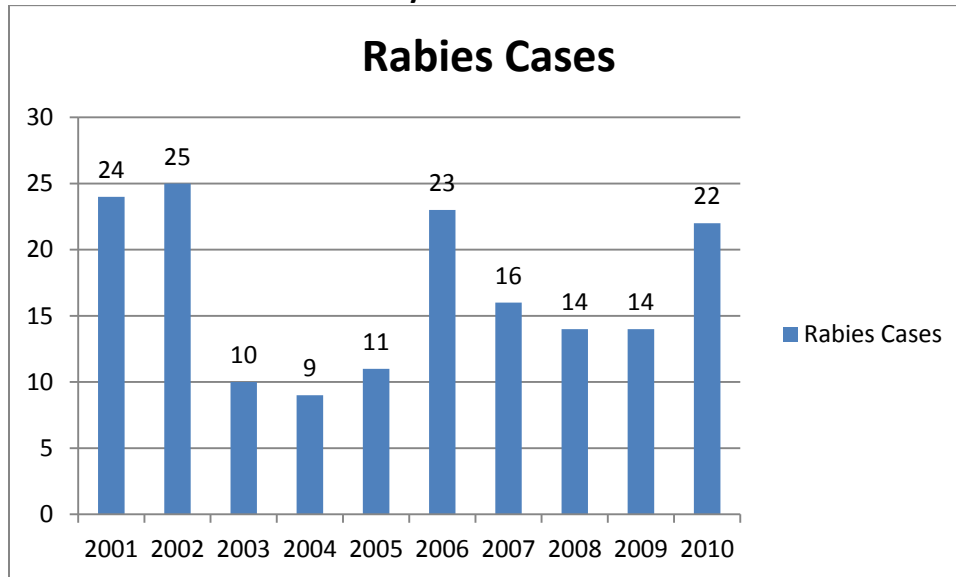
Reclaim: Animals reclaimed by their owners after being found as strays or after completing quarantine period.

Euthanasia: Animals humanely euthanized at the Center. This includes animals that reside at the Animal Center and animals surrendered by their owner for euthanasia for medical or behavioral reasons.

Animal Center News

No big news in October except the announcement that Nancy Clemmons, one of our long time employees is retiring in November. We all wish Nancy good luck in her retirement!

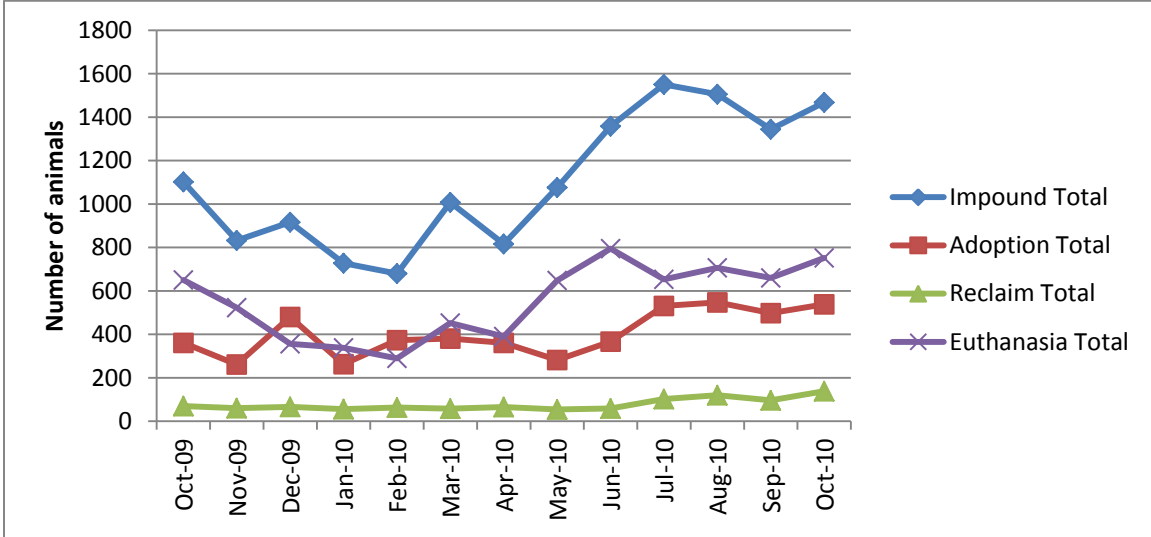
Rabies: Positive confirmed laboratory cases



n=0 October 2010; year to date cases=22; this is the first month this year that we have not seen a positive case. As compared to the last few years, we are on track to have an above average year in Wake County for positive rabies cases. Wake County averages 15.8 laboratory confirmed cases each year; since 2001, raccoon tests account for 56% of

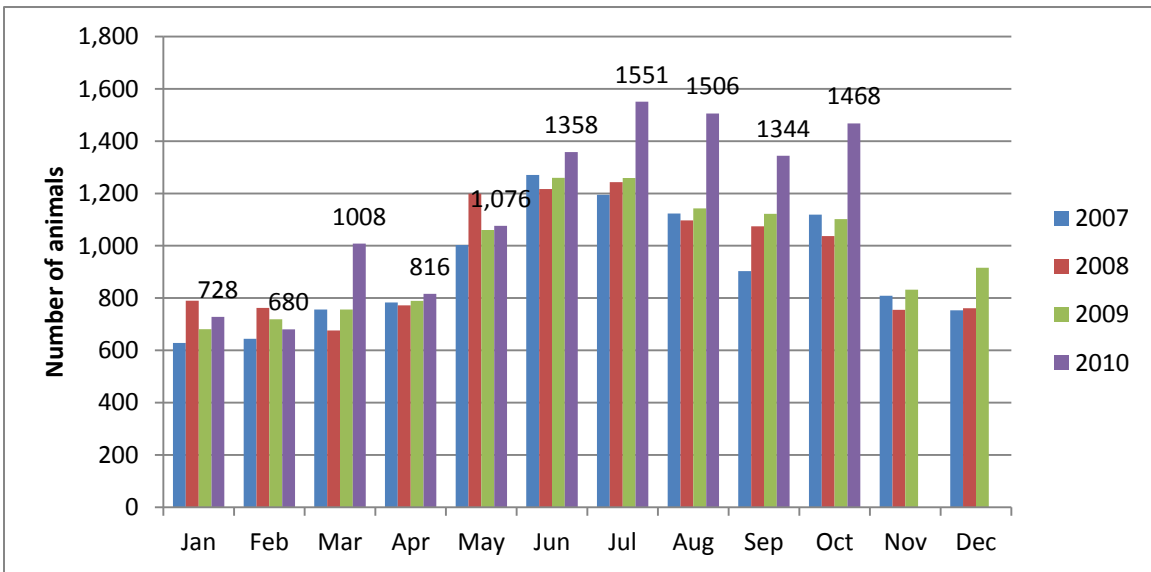
all species that test positive in Wake County; rabies is enzootic (present in wildlife) in all NC counties

Animal Center Statistical Summary



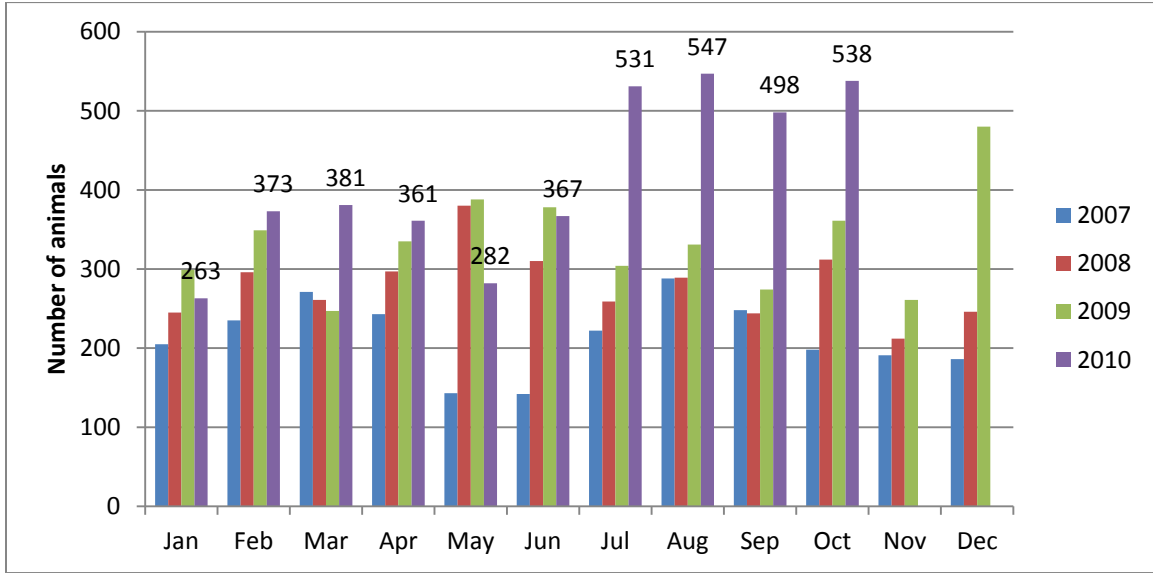
Ebb and Flow of animal intake: As depicted above, animal intake increases significantly in the warm months and drops in the cold months. This is typically associated with an increase in puppy and kitten litters in warm months. Adoptions do not normally increase to match the increase in intake so euthanasia rates can increase with intake.

Animal Center Intake monthly comparison



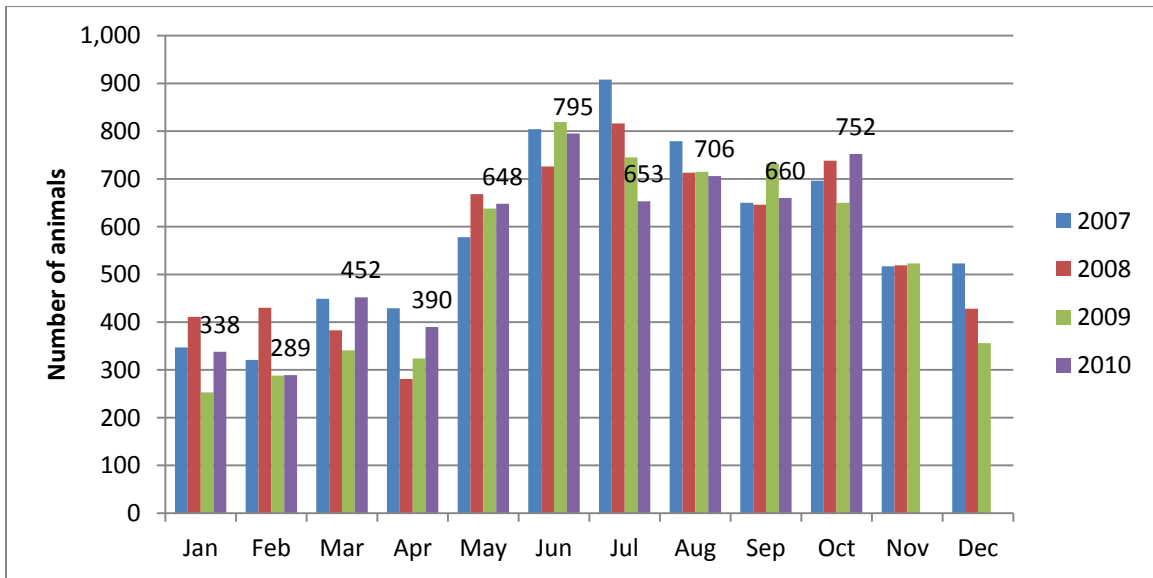
n=1468; Intake is 33% higher than October 2009. This fiscal year, the Animal Center became the sole intake facility in the County. We are currently experiencing a 27% increase for the fiscal year.

Adoption/Transfer Monthly Comparison



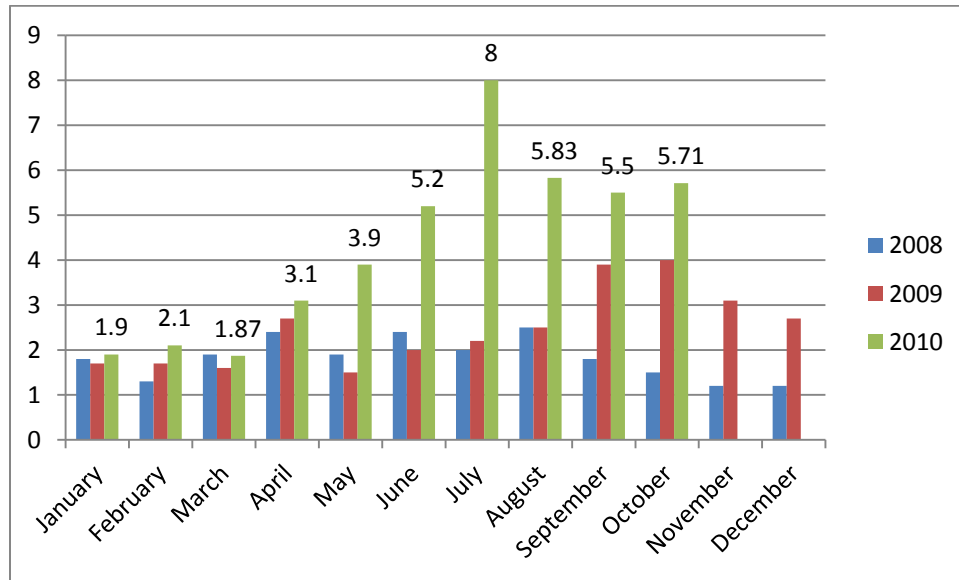
n=538; data represents a combination of typical adoptions to new families and transfers to partner rescue groups; 49% increase in adoptions over October 2009. This is a tremendous increase and we are very proud of the support we have received from the citizens of Wake County!

Euthanasia monthly comparison



n=660; the euthanasia numbers are 15% higher than this month last year.

Volunteer hours by FTE



n=5.71 FTEs; Volunteers logged enough hours this month to equal 5.71 extra full time employees. This includes dog walking, socialization, off-site events and work promoting animals in the community, just to name a few.

**Wake County Animal Center
Statistical Report**

Date Range: July 1-October 31

Date Prepared:

11/4/2010

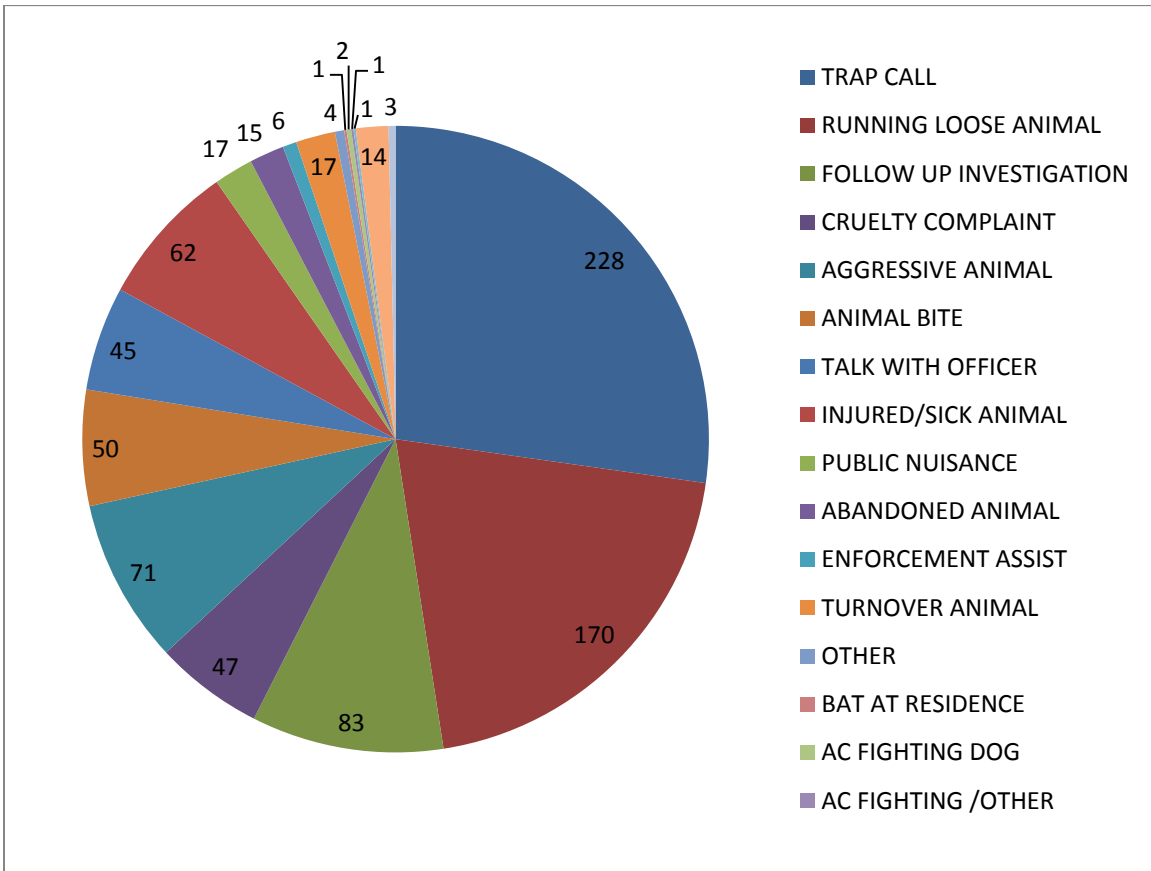
	YTD FY09	Percent	YTD FY10	Percent	YTD FY11	Percent	Oct-10	Percent
Intake Dog	1933		1949		2556		644	
Intake Cat	2417		2529		3047		765	
Intake Other	101		114		235		59	
Intake Total	4451		4592		5838		1468	
Adoption Dog	638	33%	604	31%	905	35%	199	31%
Adoption Cat	244	10%	266	11%	532	17%	134	18%
Adoption Other	21	21%	42	37%	55	23%	11	19%
Adoption Total	903	20%	912	20%	1492	26%	344	23%
Transfer Dog	156	8%	292	15%	307	12%	108	17%
Transfer Cat	27	1%	55	2%	275	9%	70	9%
Transfer Other	19	19%	14	12%	42	18%	16	27%
Transfer Total	202	5%	361	8%	624	11%	194	13%
Reclaim Dog	228	12%	239	12%	400	16%	120	19%
Reclaim Cat	29	1%	28	1%	53	2%	17	2%
Reclaim Other	2	2%	2	2%	5	2%	1	2%
Reclaim Total	259	6%	269	6%	458	8%	138	9%
Euth Dog	841	44%	739	38%	715	28%	193	30%
Euth Cat	2033	84%	2088	83%	1999	66%	543	71%
Euth Other	39	39%	21	18%	91	39%	16	27%
Euth Total	2913	65%	2848	62%	2805	48%	752	51%

	Total #	Percentage
Change in intake from FY10 to FY11	1246	27%
Change in adoptions from FY10 to FY11	580	64%
Change in transfers from FY10 to FY11	263	73%
Change in euthanasia from FY10 to FY11	-43	-2%
Change in total cat live releases	511	146%
Change in cat live release percentage		14%
Change in total dog live releases	477	42%
Change in dog live release percentage		5%

NOTE: A decrease in total numbers or percentage will show a (-) symbol and be in red. Increases will be in blue and will not show a (+) symbol.

NOTE: The first three columns show three different fiscal years, using the date range indicated on the top left corner of the report. Each month, we will compare the same date range across the current and past two fiscal years for equal comparison.

Animal Control Field Data

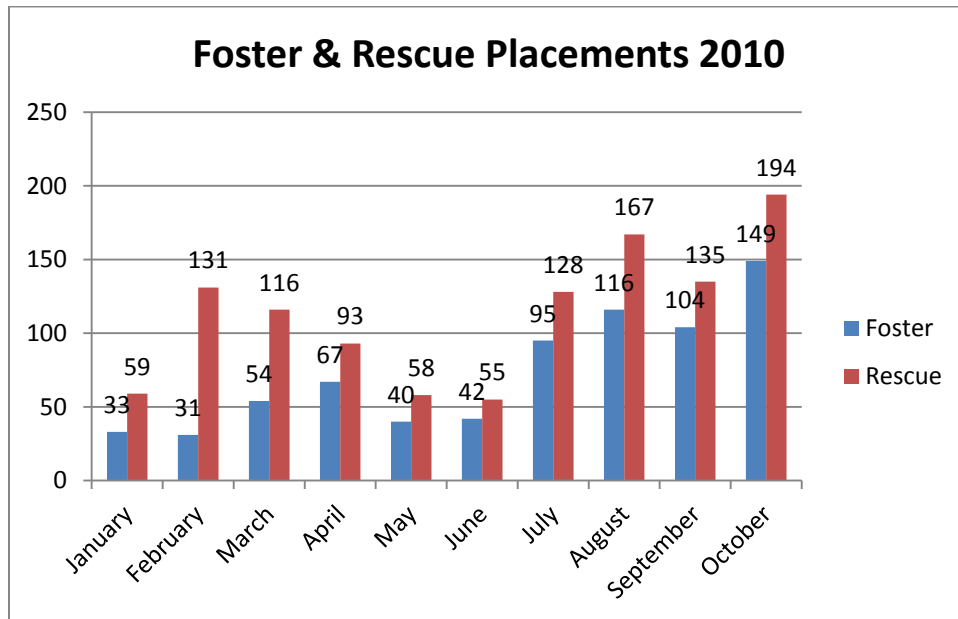


Wake County Animal Control responded to 837 requests for service in October 2010. This represents an increase of just over 100 calls compared to September 2010. This increase in calls may have a part in the increase in animal intake this month. Complaints for stray or loose animals continues to contribute to about half of all calls.

Foster and Rescue Report

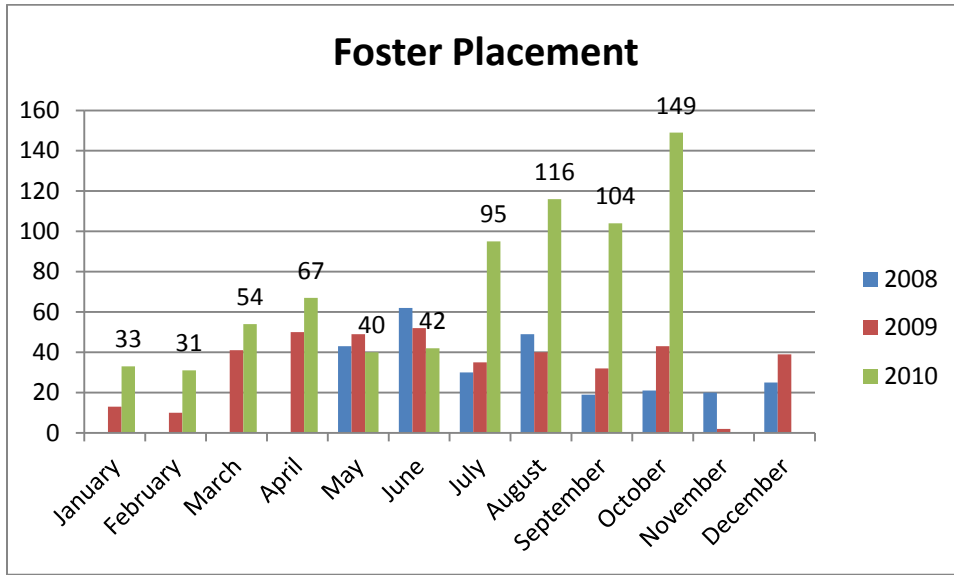
During the month of October, one hundred forty nine (149) animals were placed into foster care.

During the month of October, one hundred ninety four (194) animals were placed into the care of partnering rescue groups and shelters.



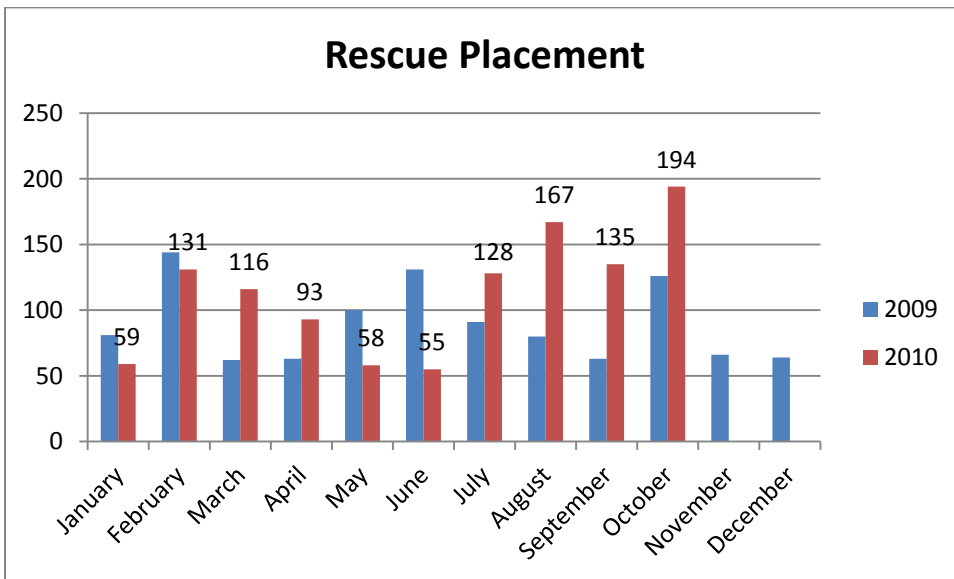
n=149 foster, 194 rescue; We set single month records in October for placing animals in foster care and into rescue.

Year over year comparison: Foster Placement



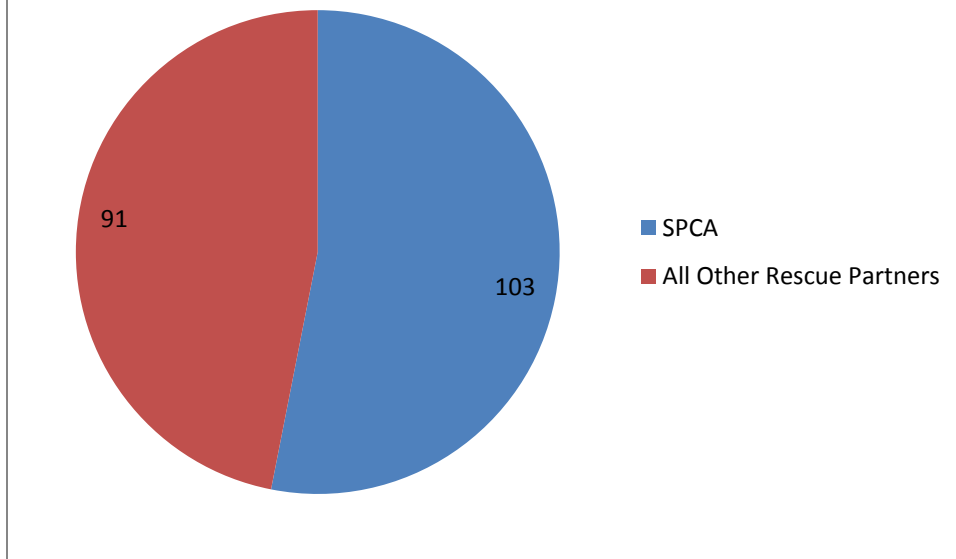
n=149; October of 2010 is another record-breaking month for the foster program. More animals were placed into foster care during this month than any other month since 2009.

Year over year comparison: Rescue Placement



n=194; October of 2010 Rescue placement is an alternative placement method. Many local not-for-profit groups help the animals in Wake County by providing care and adoption services in alternative locations to the standard shelter.

October 2010 Rescue Transfers



The SPCA of Wake County is our largest rescue partner, but this month we have seen a big improvement in participation from smaller rescue groups in our area.

Top Canine and Feline Transfers

Shelter/Rescues	Dogs Transferred
SPCA of Wake County	51
2 Paws Up	7
Dachshund Rescue of North America	5
Mitchell Mill Animal Hospital	5
All Breed Rescue of the Carolinas	4
Faulkner Animal Rescue and Recovery	4
Saving Grace for Animals	3

Shelters/Rescues	Cats Transferred
SPCA of Wake County	52
Paw Prints Animal Rescue	8
Goathouse Refuge	7
SAFE Haven for Cats	3