

Wake County

# Animal Care, Control and Adoption

June 2010 Monthly Report



Wake County  
7/8/2010

## Definitions

*Intake:* Animals admitted to the Animal Center. These include animals surrendered by the general public, picked up by Animal Control and animals born at the Center.

*Adoption:* Includes animals adopted to new homes and transferred to qualifying rescue groups.

*Reclaim:* Animals reclaimed by their owners after being found as strays or after completing quarantine period.

*Euthanasia:* Animals humanely euthanized at the Center. This includes animals that reside at the Animal Center and animals surrendered by their owner for euthanasia for medical or behavioral reasons.

NOTE: The data included in the graphs below represent all types of animals except for the data table on page 7. That table only includes dogs and cats, which represent the vast majority of the animals we deal with.

## Animal Center News

Our big news for the Animal Center this month happened on the last day of the month. Wake County Board of Commissioners along with local elected officials held a ribbon cutting to officially open the expansion of the Animal Center. We also started a \$25 adoption special on the 30<sup>th</sup> as well as expanded hours to better serve the public. Starting June 30, the Animal Center will be open every day of the week from 12P-6P for adoptions.

We also launched a new lost and found resource called [www.trianglelostpets.org](http://www.trianglelostpets.org). This site, sponsored by Wake County, is a separate resource from the main [www.wakegov.com](http://www.wakegov.com) page and is designed to be maintained by the end-users. Citizens can post lost and found animals themselves and remove posts when the animal is found or reunited. Pet owners can post pictures and even place a pin on a map to show the exact location. They can also create lost animal posters right out of the website for printing. Wake County has made this service available to the entire region since animals don't understand county lines.

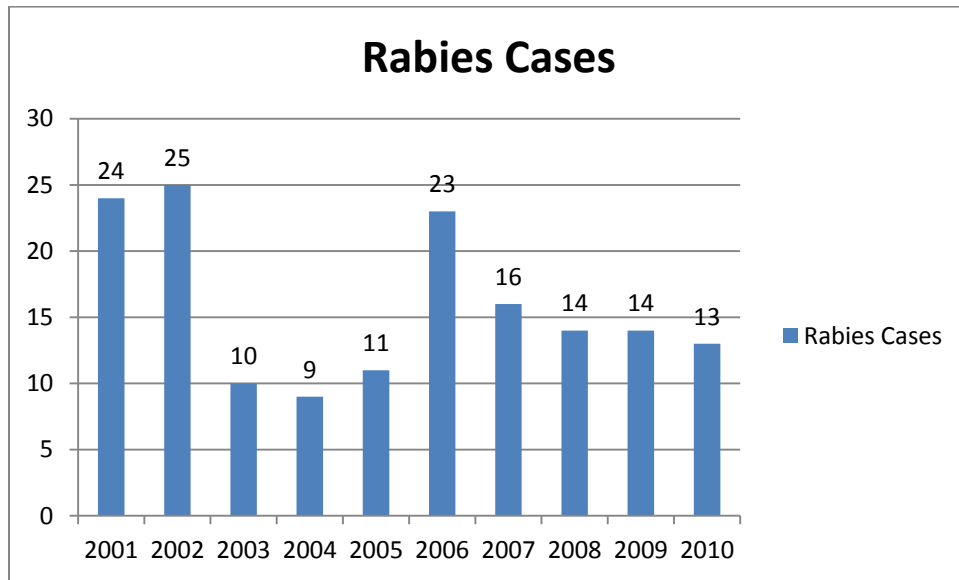
June closes out the County's fiscal year and with that brings a new budget and this year a new fee schedule. Check out our webpage at [www.wakegov.com/pets](http://www.wakegov.com/pets) for more information.

The end of the fiscal year also signals a milestone for our data. An additional end of year summary report will be posted soon with end of year data for the community and a summary of activities from the Animal Center.

## Expansion Construction Update

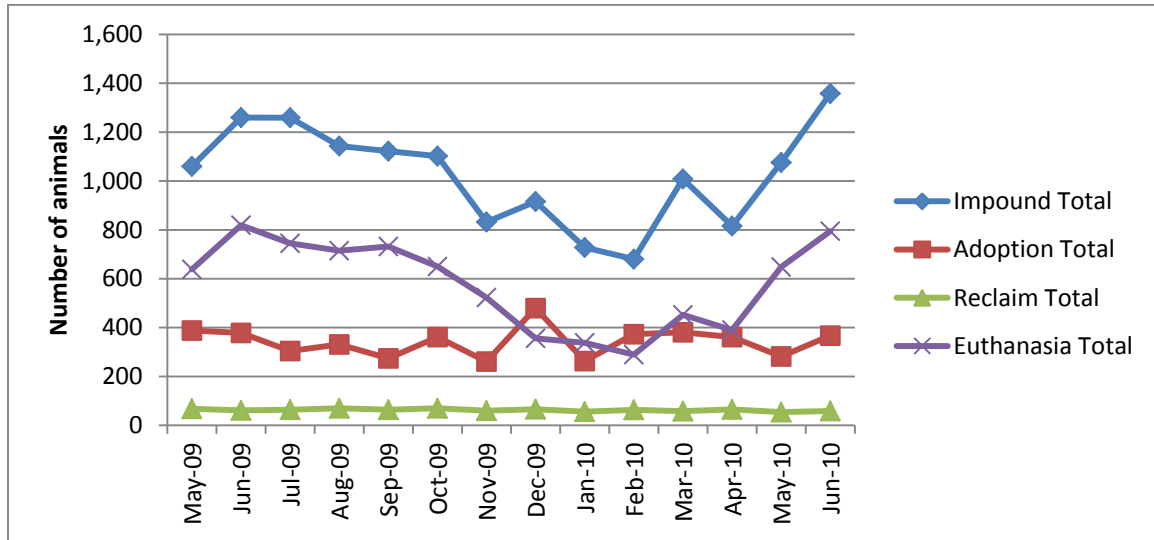
The main addition is complete and was opened officially on June 30. We continue to work on the internal renovations of the Dog Isolation Room, Treatment Room and Receiving.

## Rabies: Positive confirmed laboratory cases



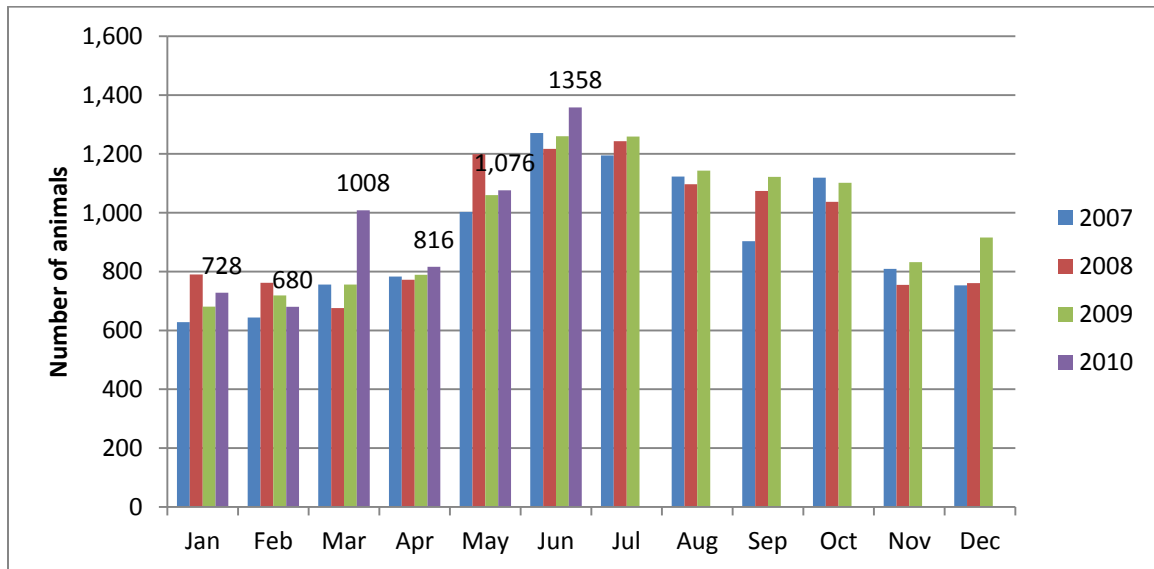
n=4 June 2010; year to date cases=13; As compared to the last few years, we are on track to have an above average year in Wake County for positive rabies cases. Wake County averages 15.8 laboratory confirmed cases each year; since 2001, raccoon tests account for 56% of all species that test positive in Wake County; rabies is enzootic (present in wildlife) in all NC counties

## Animal Center Statistical Summary



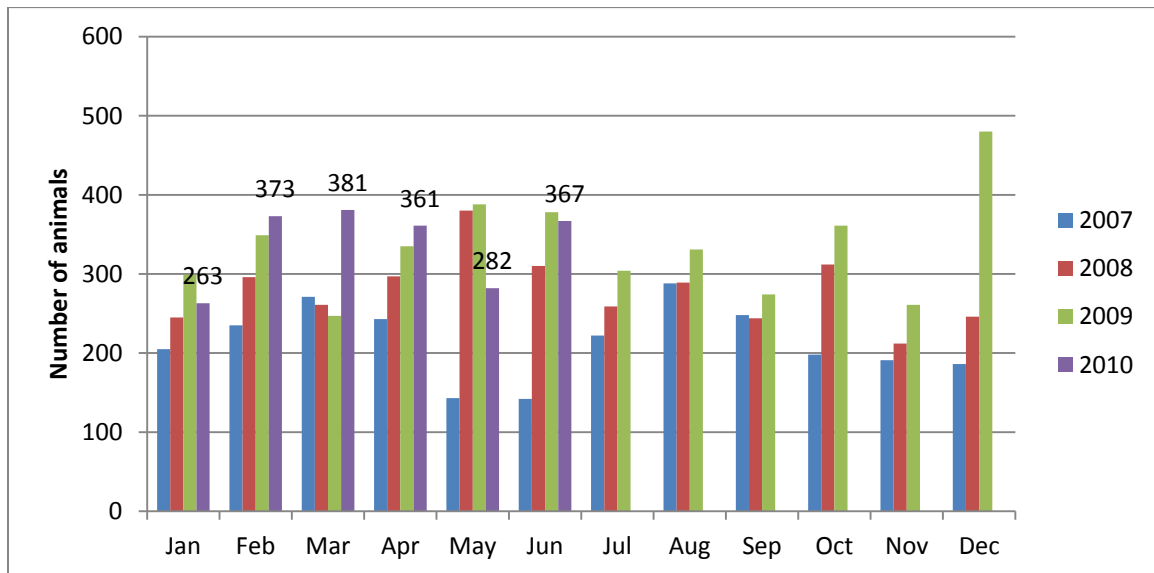
**Ebb and Flow of animal intake:** As depicted above, animal intake increases significantly in the warm months and drops in the cold months. This is typically associated with an increase in puppy and kitten litters in warm months. Adoptions do not normally increase to match the increase in intake so euthanasia rates can increase with intake.

### Animal Center Intake monthly comparison



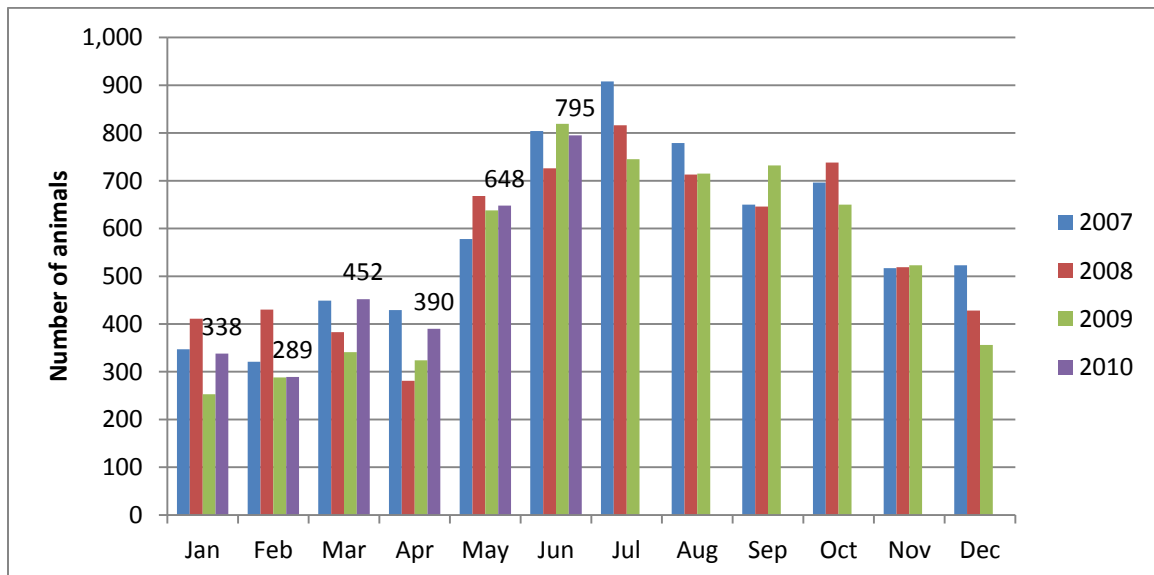
*n=1358; Intake is 7% higher than June 2009 and the highest intake month on record for the Animal Center.*

### Adoption Monthly Comparison



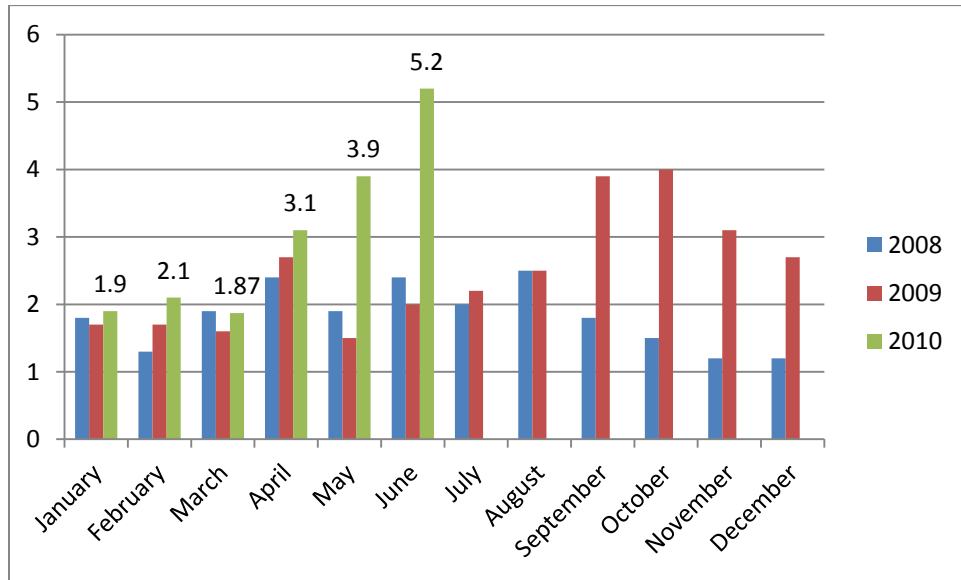
*n=367; data represents a combination of typical adoptions to new families and transfers to partner rescue groups; 3% decrease in adoptions over June 2009.*

### Euthanasia monthly comparison



*n=795; the euthanasia numbers are 3% lower than this month last year.*

## Volunteer hours by FTE



*n=5.2 FTEs; Volunteers logged enough hours this month to equal 5.2 extra full time employees. This includes dog walking, socialization, off-site events and work promoting animals in the community, just to name a few. A big addition to our volunteer numbers is the start of our Vet-PAC program with the Pre-Vet students at NCSU. Pre-Vet students have access to this excellent program, designed by our staff and staff at NCSU, to provide pre-vet students with exposure to animals not available to most people.*

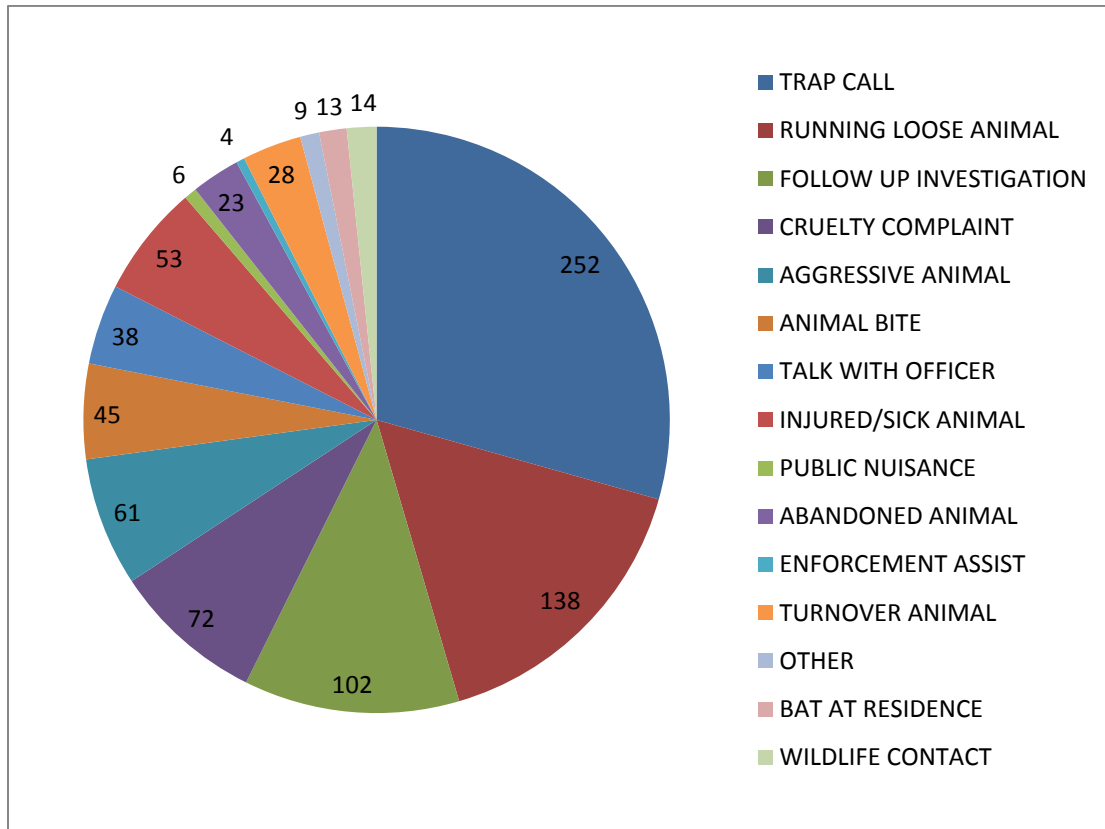
Animal Shelter Statistics for period **June 1-30, 2010**

Year to year comparison is over the same timeframe each year.	2007-2008		2008-2009		2009-2010 (YTD)							
	Count	Perf.	Count	Perf.	1st Q	2nd Q	3rd Q	Apr-10	May-10	Jun-10	YTD	Performance
Impound Dog	5,024		5,330		1492	1392	1287	384	446	486	5487	
Impound Cat	5,864		5,494		1944	1397	1059	415	604	821	6240	
<b>Impound Total</b>	<b>10,888</b>		<b>10,824</b>		<b>3436</b>	<b>2789</b>	<b>2346</b>	<b>799</b>	<b>1050</b>	<b>1307</b>	<b>11727</b>	
<b>Garner Animal Control Intake</b>					<b>96</b>	<b>90</b>	<b>73</b>	<b>32</b>	<b>31</b>	<b>15</b>	<b>337</b>	
<b>Cary Animal Control Intake</b>					<b>54</b>	<b>59</b>	<b>46</b>	<b>22</b>	<b>29</b>	<b>19</b>	<b>229</b>	
Adoption Dog	2,020	40.2%	2,462	46.2%	651	711	677	214	199	265	2717	49.5%
Adoption Cat	875	14.9%	867	15.8%	217	348	296	129	67	91	1148	18.4%
<b>Adoption Total</b>	<b>2,895</b>	<b>26.6%</b>	<b>3,329</b>	<b>30.8%</b>	<b>868</b>	<b>1059</b>	<b>973</b>	<b>343</b>	<b>266</b>	<b>356</b>	<b>3865</b>	<b>33.0%</b>
Reclaim Dog	602	12.0%	678	12.7%	171	179	150	57	45	52	654	11.9%
Reclaim Cat	77	1.3%	85	1.5%	27	15	24	8	8	7	89	1.4%
<b>Reclaim Total</b>	<b>679</b>	<b>6.2%</b>	<b>763</b>	<b>7.0%</b>	<b>198</b>	<b>194</b>	<b>174</b>	<b>65</b>	<b>53</b>	<b>59</b>	<b>743</b>	<b>6.3%</b>
Euthanize Dog	2,196	43.7%	2,018	37.9%	569	478	347	136	151	142	1823	33.2%
Euthanize Cat	4,661	79.5%	4,376	79.7%	1605	1044	718	246	490	631	4734	75.9%
<b>Euthanize Total</b>	<b>6,857</b>	<b>63.0%</b>	<b>6,394</b>	<b>59.1%</b>	<b>2174</b>	<b>1522</b>	<b>1065</b>	<b>382</b>	<b>641</b>	<b>773</b>	<b>6557</b>	<b>55.9%</b>

<b>FOSTER-TO-ADOPT PROGRAM</b>	<b>FY 09</b>	<b>1st Q</b>	<b>2nd Q</b>	<b>3rd Q</b>	<b>Apr-10</b>	<b>May-10</b>	<b>Jun-10</b>	<b>FY10</b>
Animals Placed into Program	188	155	182	151	61	83	111	<b>931</b>
Adoptions Completed		104	100	142	74	41	113	<b>574</b>
Animals Returned		6	6	13	1	3	6	<b>35</b>
Animals Remaining in FTA								<b>322</b>

**\*The large chart above represents both a listing of monthly performance and a comparison to the last two years. The same amount of months is compared for each year. For example, it shows that in FY08 at this time of the year, we had adopted out 24.1% of animals, in FY09 28.8% and this fiscal year 33.4% have been adopted.**

## Animal Control Field Data

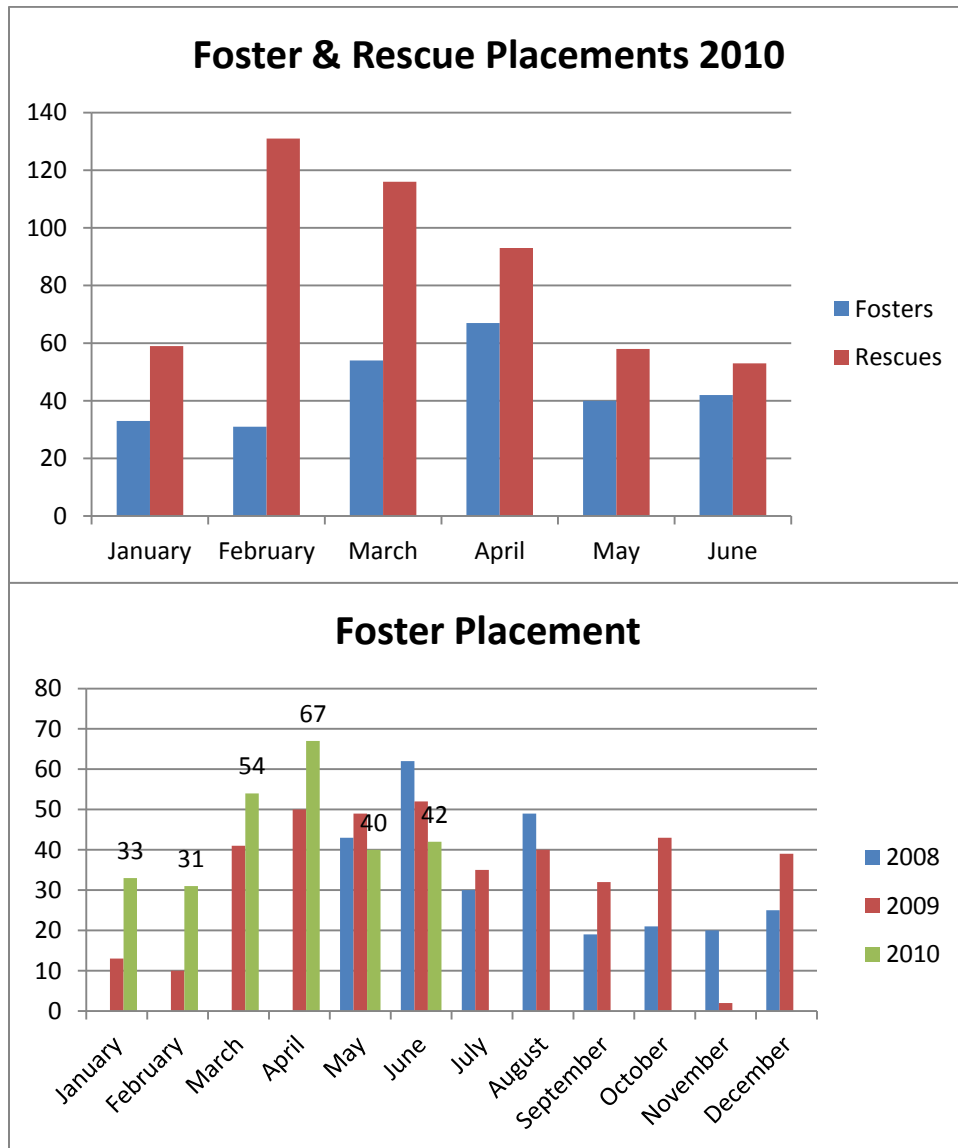


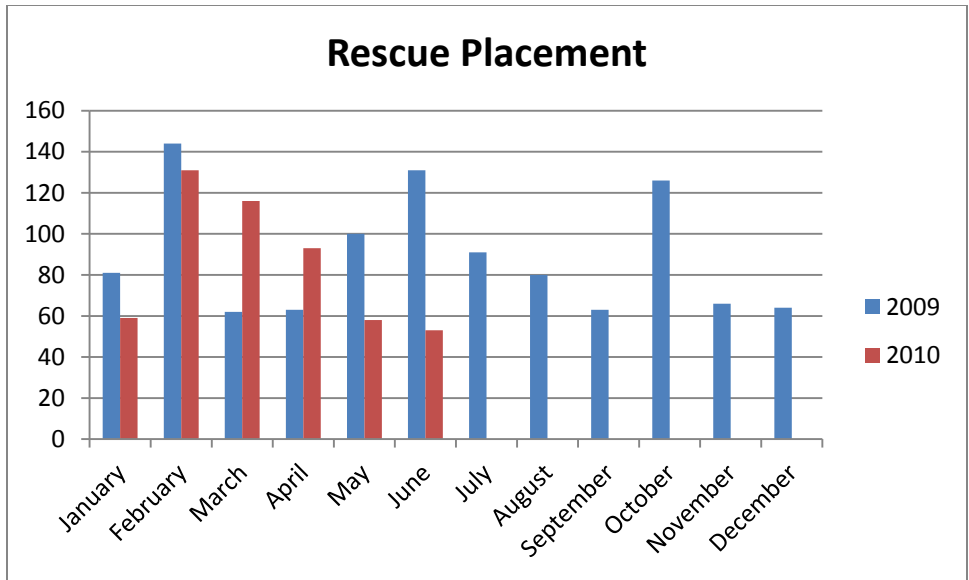
Wake County Animal Control responded to 858 requests for service in June 2010. Complaints for stray or loose animals continues to contribute to about half of all calls.

## Foster and Rescue Report

During the month of June, forty two (42) animals were placed into foster care. 38% were placed to recover from an upper respiratory infection.

During the month of June, fifty-three (53) animals were placed into the care of partnering rescue groups and shelters. As to be expected, the number of animals placed into rescue care this month has decreased primarily due to our rescue partners reaching maximum capacity. The volume of animals received by the Center is a mirror of the pet overpopulation problem in our community, when our intake numbers increase, so do those of our rescue partners. We continue to be appreciative of all the efforts made by our rescue partners to take animals from our Center and we look forward to continued mutual success.





Shelter/Rescues	Cats Transferred
SPCA of Wake County	6
Faulkner Animal Rescue and Recovery	3
Safe Haven for Cats	3

Shelter/Rescues	Dogs Transferred
SPCA of Wake County	8
Finding Homes for JRTs	5
Hav-A-Hart Pet Rescue	4
Camp Canine	2
Carolina Poodle Rescue	2
Carolina Basset Hound Rescue	2
Paws 4 Rescue New England	2