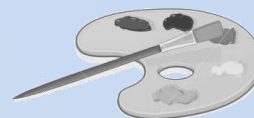


"MILL AS MUSE" VISUAL ART CONTEST 2012



The 6th Annual "Mill as Muse" Art Exhibit will feature artwork inspired by Yates Mill and the surrounding park, so get out your sketchbooks, pencils, paintbrushes, etc. and submit a contest entry! An exhibit reception will take place on Saturday, February 11, 2012, from 2-4 p.m. in the A.E. Finley Center for Education and Research (Park Center) at Historic Yates Mill County Park. Contest winners will be announced during the reception and a photograph of the winners will be taken.

VISUAL ART CONTEST ENTRY FORM

(Use one form per entry. A copy of this full page will be given to each contestant.)

Name (please print) _____ Email Address: _____

Address _____

Phone number _____ Date the artwork was completed _____

Artwork title _____

Artwork medium _____ Artwork dimensions _____

Contest category (circle one) **MILL** or **PARK NATURE** Age group (circle one) **ADULT** or **YOUTH**

RULES AND INFORMATION FOR THE VISUAL ART CONTEST:

- All entries and accompanying forms must be received by **Weds. February 1, 2012**, to qualify for consideration, but no earlier than Sat. January 28. Entries arriving late with a postmarked date of February 1 will be accepted until 5 p.m. on February 4, 2012. Contestants do not have to be present to win, but are encouraged to attend the February 11th reception.
- **No more than one entry per person per category** is allowed, and entries **must be the original work** of the contestant.
- Adult and children's (ages 13 and under) artwork will be judged separately, and prizes will be awarded for each contest category and age group. Any individual are welcome to participate (including both amateur and professional artists).
- Artwork **must be hand-produced**, 2-dimensional works of art, and **must feature Yates Mill**. Artwork can be in many forms, including paintings, drawings, collages, etchings, mixed media, and other 2-dimensional media. Electronic reproductions, tracings, or computer-generated/altered materials will not be accepted.
- Artwork **must be framed or mounted for display**, and must be **no larger than 24" x 36"**. Entries should not be laminated. Slides and transparencies will not be accepted.



DROP OFF OR SEND ENTRIES TO:

PARK VISUAL ART CONTEST

Historic Yates Mill County Park, 4620 Lake Wheeler Road, Raleigh, NC 27603

Phone: (919) 856-6675; Email: yatesmill@co.wake.nc.us

Contest prizes will be announced on www.wakegov.com/parks/yatesmill as of Jan. 10, 2012

Park staff will select 3 contest judges, who will assign numerical scores for each entry based on technical ability and creativity. The highest combined scores for each entry will determine the winners. Winning artwork will be displayed in the Park Center through May 31, 2012, before being returned to the artists. Other entries will be returned after being displayed for the exhibit opening weekend. The park is not responsible for the loss or damage of artwork while on display. Artists will be credited for their work and still retain the right to use their entries for other purposes. The park would like to receive digital photos of the entries if possible (a PowerPoint slide show of all entries is displayed in the Park Center's exhibit hall for a full year) - these should be at least 5x7 inches in size, at a resolution of 240ppi, profiled in the sRGB color space, and formatted as a high quality JPEG. If not available, staff will take photos of the entries for inclusion in the slide show.

I warrant that my entry materials are original, do not infringe on any third party's rights, and that any necessary permissions from any third party have been obtained (if a third party appears in the artwork). I hereby grant Historic Yates Mill County Park royalty-free license to the right to copy, distribute, publicly display or perform, and the right to create derivative works, as may be necessary to meet the needs of the park. This agreement will apply to all artwork and other submissions supplied to the park by the participant for the "Mill as Muse" art contest and shall remain in full force and effect until cancelled in writing by either party or superseded by a subsequent agreement.

SIGNED _____ DATE _____

Contest # _____
(Office use only)