



## Definitions

*Intake:* Animals admitted to the Animal Center. These include animals surrendered by the general public, picked up by Animal Control and animals born at the Center.

*Adoption:* Includes animals adopted to new homes and transferred to qualifying rescue groups.

*Reclaim:* Animals reclaimed by their owners after being found as strays or after completing quarantine period.

*Euthanasia:* Animals humanely euthanized at the Center. This includes animals that reside at the Animal Center and animals surrendered by their owner for euthanasia for medical or behavioral reasons.

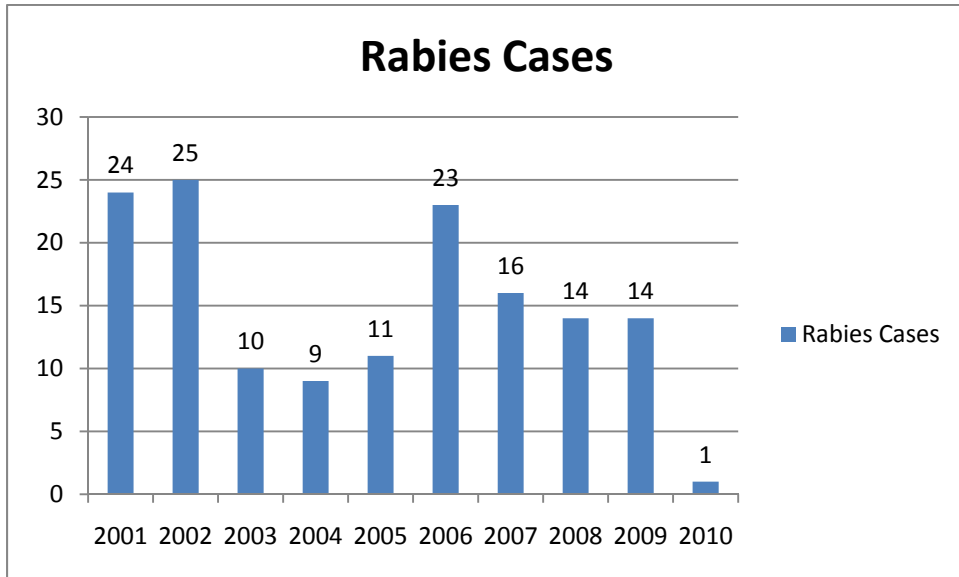
NOTE: The data included in the graphs below represent all types of animals except for the data table on page 7. That table only includes dogs and cats, which represent the vast majority of the animals we deal with.

## Expansion Construction Update

- Construction continues in the new kennel building, with drains and kennels walls going up, as well as the roof and walls for the cat area. February progress will include pouring the floors, installing duct work and starting the roof over the cat section.

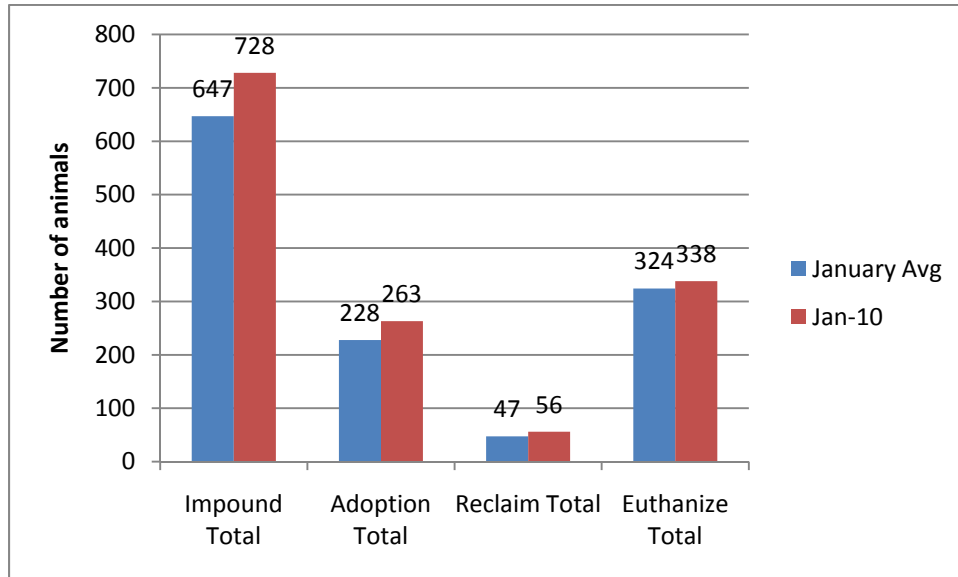


**Rabies: Positive confirmed laboratory cases**

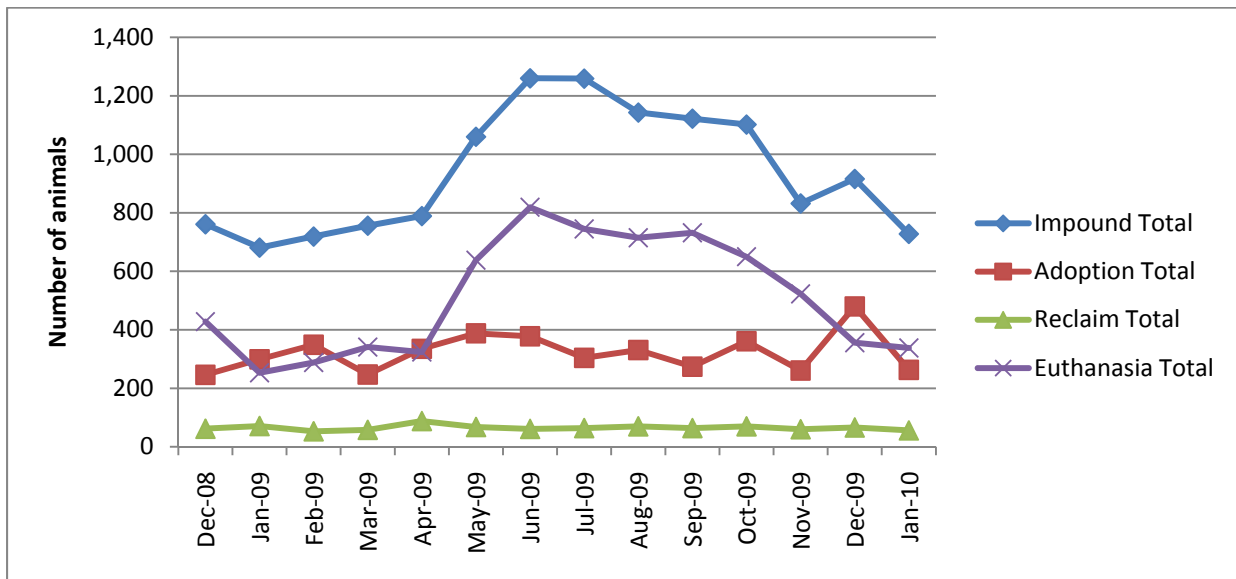


n=1 January 2010; year to date cases=1; Wake County averages 15.8 laboratory confirmed cases each year; since 2001, raccoon tests account for 56% of all species that test positive in Wake County; rabies is enzootic (present in wildlife) in all NC counties

## Animal Center Statistical Summary

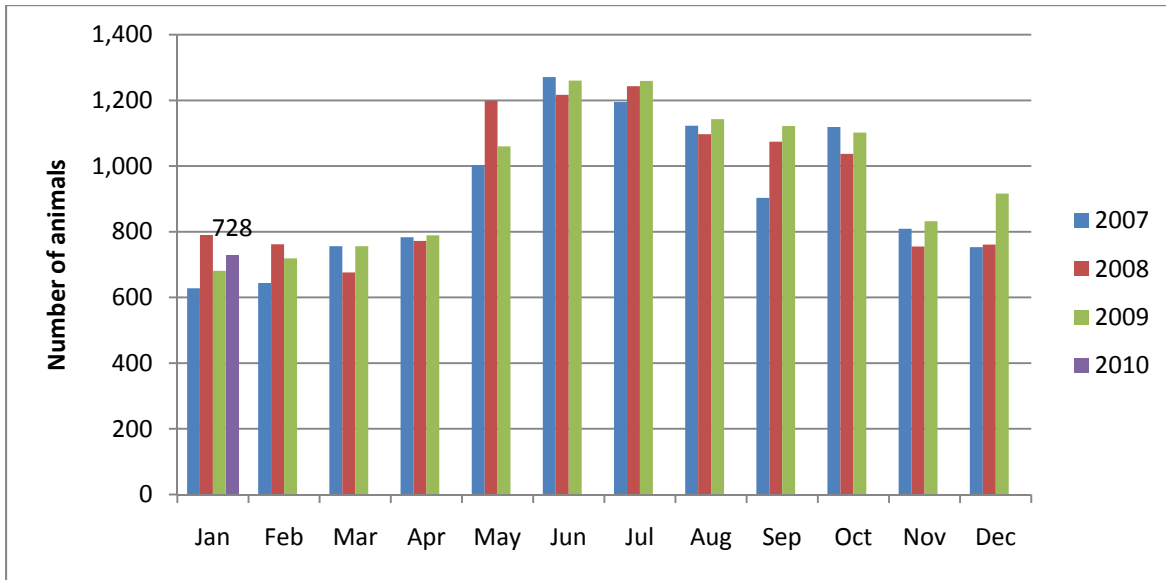


January 10 Intake is 12.5% higher than the average, Adoptions are 15% higher, Reclaims are 19% higher and euthanasia is 4% lower than the average. *Note: Averages include data from FY02 until the current month*



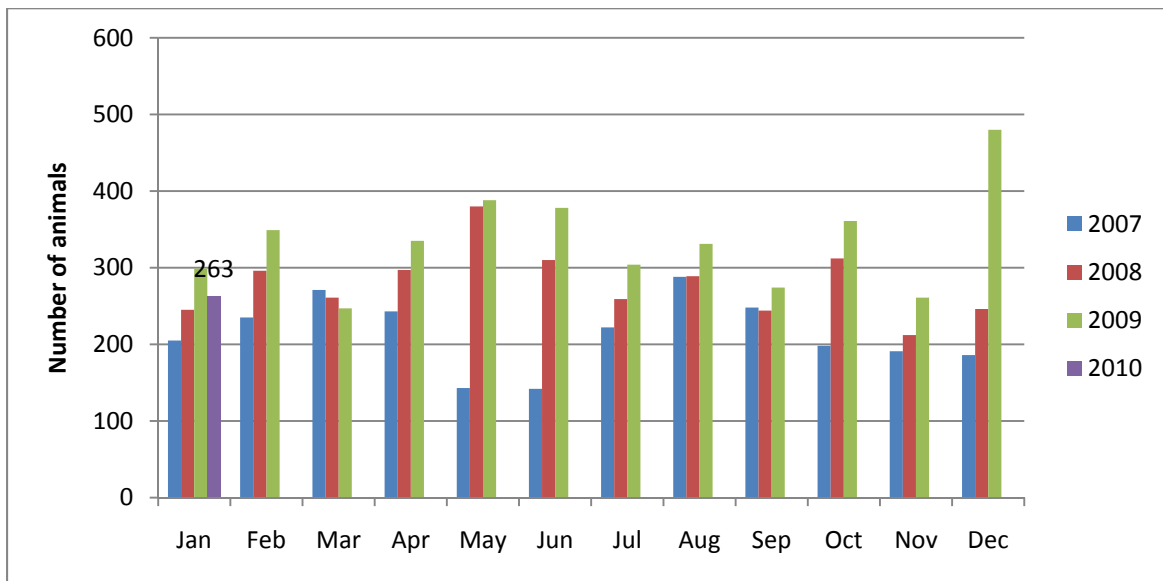
**Ebb and Flow of animal intake:** As depicted above, animal intake increases significantly in the warm months and drops in the cold months. This is typically associated with an increase in puppy and kitten litters in warm months. Adoptions do not normally increase to match the increase in intake so euthanasia rates can increase with intake. There was a significant drop off in adoption numbers this month. In December, we set records for adoption with a holiday promotion and a drop was anticipated.

### Animal Center Intake monthly comparison



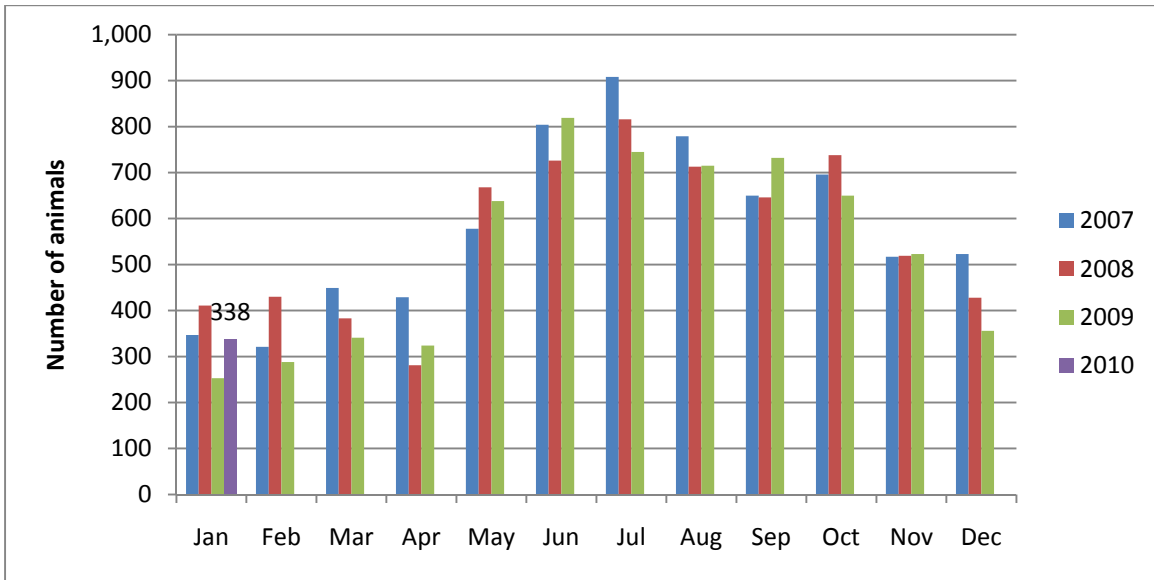
*n=728; Intake is 7% higher than January 2009.*

### Adoption Monthly Comparison



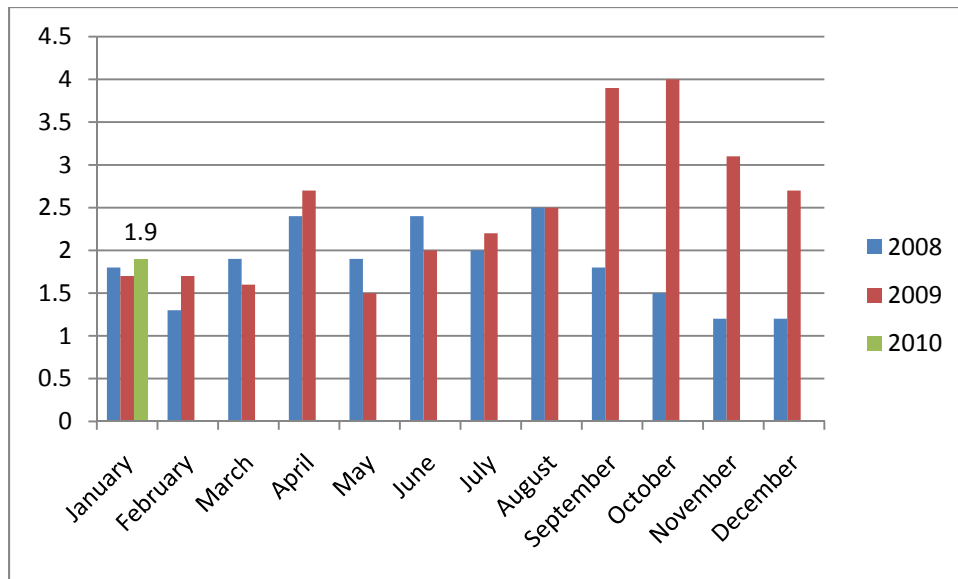
*n=263; data represents a combination of typical adoptions to new families and transfers to partner rescue groups; 13.6% decrease in adoptions over January. A drop in adoptions was anticipated due to the record adoptions the year before which could have reduced the number of adopters ready for a new animal.*

### Euthanasia monthly comparison



*n=338; the euthanasia numbers are 33% higher than this month last year. January of last year was the lowest euthanasia month in over 3 years, leading to the large percentage increase this year.*

### Volunteer hours by FTE



*n=1.9 FTEs; Volunteers logged enough hours this month to equal 1.9 extra full time employees. This includes dog walking, socialization, off-site events and work promoting animals in the community, just to name a few.*

## Animal Shelter Statistics for period *January 1-31, 2010*

Year to year comparison is over the same timeframe each year.	2007-2008		2008-2009		2009-2010 (YTD)				
	Count	Perf.	Count	Perf.	1st Q	2nd Q	Jan-10	YTD	Performance
Impound Dog	2,899		3,161		1492	1392	397	3281	
Impound Cat	3,562		3,303		1944	1397	312	3653	
<b>Impound Total</b>	<b>6,461</b>		<b>6,464</b>		<b>3436</b>	<b>2789</b>	<b>709</b>	<b>6934</b>	
Garner Animal Control Intake					96	90	22	208	
Cary Animal Control Intake					54	59	22	135	
Adoption Dog	1,028	35.5%	1,308	41.4%	651	711	182	1544	47.1%
Adoption Cat	422	11.8%	481	14.6%	217	348	76	641	17.5%
<b>Adoption Total</b>	<b>1,450</b>	<b>22.4%</b>	<b>1,789</b>	<b>27.7%</b>	<b>868</b>	<b>1059</b>	<b>258</b>	<b>2185</b>	<b>31.5%</b>
Reclaim Dog	331	11.4%	391	12.4%	171	179	42	392	11.9%
Reclaim Cat	43	1.2%	47	1.4%	27	15	14	56	1.5%
<b>Reclaim Total</b>	<b>374</b>	<b>5.8%</b>	<b>438</b>	<b>6.8%</b>	<b>198</b>	<b>194</b>	<b>56</b>	<b>448</b>	<b>6.5%</b>
Euthanize Dog	1,345	46.4%	1,287	40.7%	569	478	107	1154	35.2%
Euthanize Cat	3,074	86.3%	2,741	83.0%	1605	1044	227	2876	78.7%
<b>Euthanize Total</b>	<b>4,419</b>	<b>68.4%</b>	<b>4,028</b>	<b>62.3%</b>	<b>2174</b>	<b>1522</b>	<b>334</b>	<b>4030</b>	<b>58.1%</b>

FOSTER-TO-ADOPT PROGRAM	FY 09	1st Q	2nd Q	Jan-10	FY10
Animals Placed into Program	188	155	182	32	<b>557</b>
Adoptions Completed		104	100	44	<b>248</b>
Animals Returned		6	6	4	<b>16</b>
Animals Remaining in FTA					<b>293</b>

\*The large chart above represents both a listing of monthly performance and a comparison to the last two years. The same amount of months is compared for each year. For example, it shows that in FY08 at this time of the year, we had adopted out 21.3% of animals, in FY09 25.8% and this fiscal year 31% have been adopted.