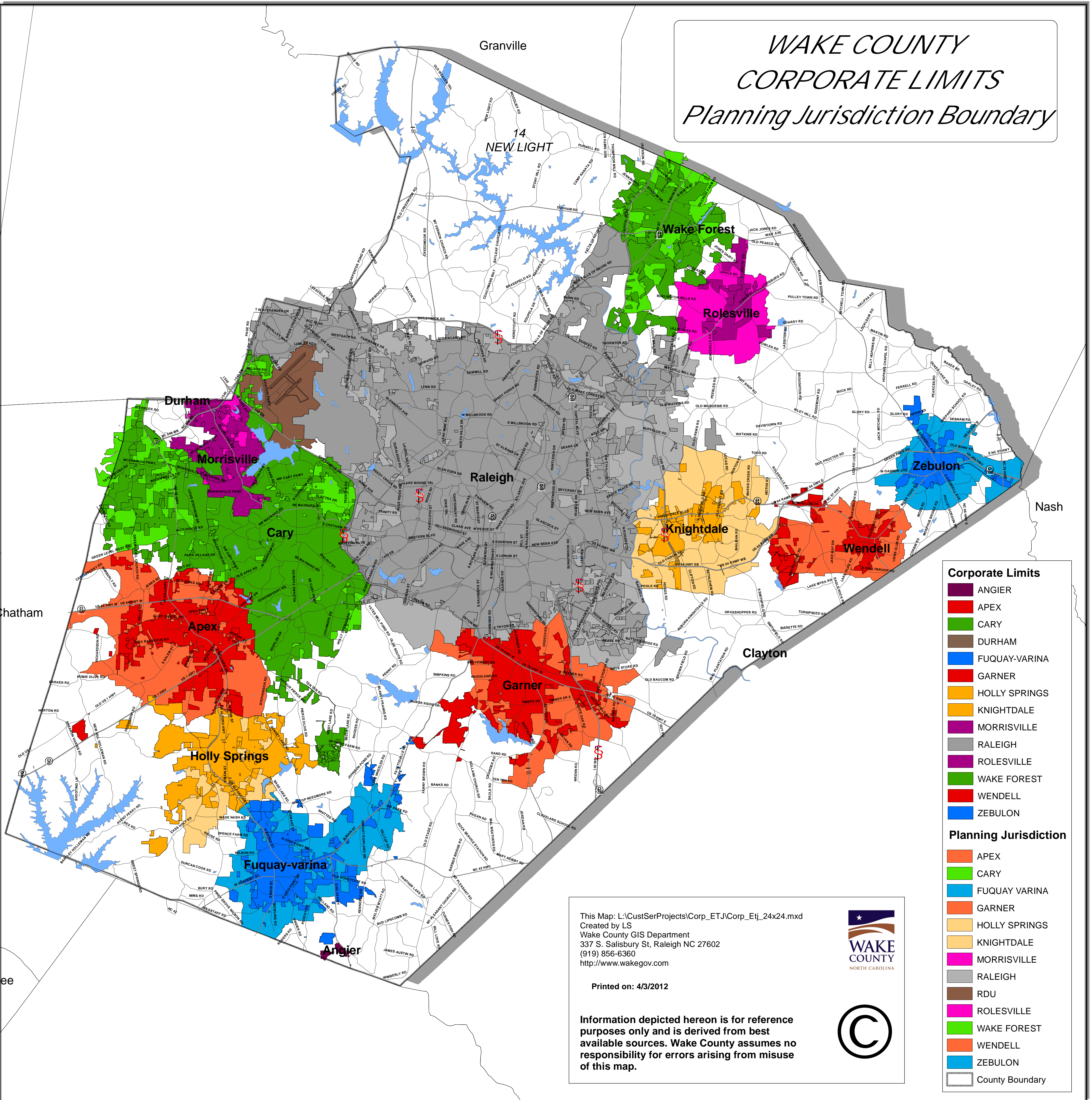


# WAKE COUNTY CORPORATE LIMITS Planning Jurisdiction Boundary



- Corporate Limits**
- ANGIER
  - APEX
  - CARY
  - DURHAM
  - FUQUAY-VARINA
  - GARNER
  - HOLLY SPRINGS
  - KNIGHTDALE
  - MORRISVILLE
  - RALEIGH
  - ROLESVILLE
  - WAKE FOREST
  - WENDELL
  - ZEBULON
- Planning Jurisdiction**
- APEX
  - CARY
  - FUQUAY VARINA
  - GARNER
  - HOLLY SPRINGS
  - KNIGHTDALE
  - MORRISVILLE
  - RALEIGH
  - RDU
  - ROLESVILLE
  - WAKE FOREST
  - WENDELL
  - ZEBULON
  - County Boundary

This Map: L:\CustSerProjects\Corp\_ETJ\Corp\_Etj\_24x24.mxd  
 Created by LS  
 Wake County GIS Department  
 337 S. Salisbury St, Raleigh NC 27602  
 (919) 856-6360  
<http://www.wakegov.com>



Printed on: 4/3/2012

Information depicted hereon is for reference purposes only and is derived from best available sources. Wake County assumes no responsibility for errors arising from misuse of this map.

