

Discovering...

THE TRAILS OF HARRIS LAKE

BIKING TRAILS

MOUNTAIN BIKE USE ONLY

Hog Run Trails

Named for the ditches and gullies formed many years ago from livestock traveling back and forth from the pen to the watering hole, Hog Run consists of a series of loops designed for any level. The mountain bike trails begin near the Cypress shelter parking lot. Mountain bike trails require proper equipment including bikes that can handle the uneven terrain. There are three main loops to provide riders with nearly eight miles of trails designed for varying skill levels.

All mountain bike trail users must wear ANSI or Snell approved safety helmets.

Hog Run (beginner loop): ● The *beginner* loop starts at the trailhead and is identified by blue circles. This loop is designed to give those riders just starting out a taste of mountain biking. The terrain is relatively flat with few obstacles. The beginner loop is signed for one-way traffic only. Length: ~ .7 miles.

Hog Run (intermediate loop): ● The *intermediate* loop is designed to challenge mountain bike riders with average skills and experience. This loop is identified by yellow circles and has a more narrow riding tread. It also boasts more changes in elevation and log jumps (with ride-around option). This loop is signed one-way traffic only. Length: ~ 2 miles.

Hog Run (advanced loop): ● The *advanced* loop is identified by red circles. It offers the longest ride as it is made up of a series of loops that offers different routes and more challenges to the more skilled riders. The advanced trail is open for two-way traffic and is accessed by crossing the park road. Length: ~ 5 miles.

All trails are subject to closure for natural recovery, workdays, special events, and inclement weather.

Please call the Harris Lake County Park park office to check trails conditions before you plan your ride:

(919)387-4342.

HIKING TRAILS

WALKERS AND JOGGERS ONLY

The Peninsula Trail

Orange blazes with hiker image mark the route of the Peninsula trail. Single blaze indicate main trail route and double blaze indicates loop off of main trail.

Trail may take the average hiker 2 hours to complete, so please be aware of park closing time and plan accordingly.

The Peninsula Trail is currently comprised of four loops, approximately 0.25, 0.5, 1.75, and 5 miles in length. These loops give hikers a choice on what distance to go and what route to take. The trailhead leaves from the Longleaf/Loblolly Shelter's side of the open play field adjacent to the picnic area.

The Peninsula Trails will lead the user on an adventure through a variety of forest habitats, around old farm ponds, and along the shores of beautiful Harris Lake.

Red Fox Run Interpretive Trail Guide

Pick up and follow this guide to discover more about the flora and fauna of Harris Lake County Park. Guide located at the kiosk by the Peninsula Trailhead.

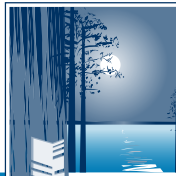
Womble Interpretive Trail

Take a journey into the past as you hike this section of trail using an interpretive brochure as your guide. Explore the life of the Womble family that lived on this property before it became a park. The history trail is a trail section off of the peninsula trail and is a total of .46 miles. Guide located at the kiosk by the Peninsula Trailhead.

DISC GOLF COURSE

Buckhorn Disc Golf Course

This course offers 18 challenging holes including water hazards. Each hole has long (blue) and short (white) tees to accommodate players of varying ability. Scorecards are available in the mailbox on the 1st hole. Course closes 15 minutes before park closes.



Get Involved - Become a VIP (Volunteer in Parks)

If you are interested in assisting with the maintenance of current or future facilities, then please contact the main park office. Volunteers and park staff perform routine maintenance on the following areas:

- Hog Run Bike Trail,
 - Peninsula Hiking Trail,
 - Buckhorn Disc Golf Course,
 - Flower Garden,
 - Landscaping, and more!
- Ask about projects for Eagle Scouts and Scout Troops!

TRAIL USER ETHICS AND RESPONSIBILITIES

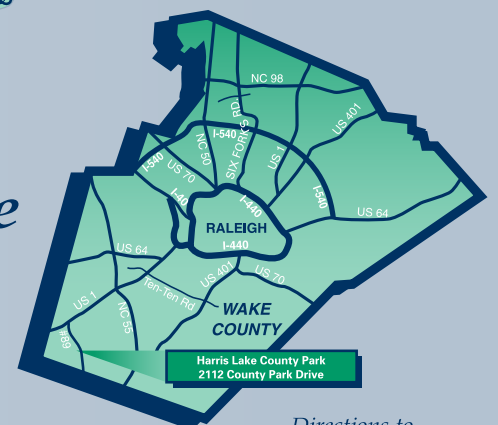
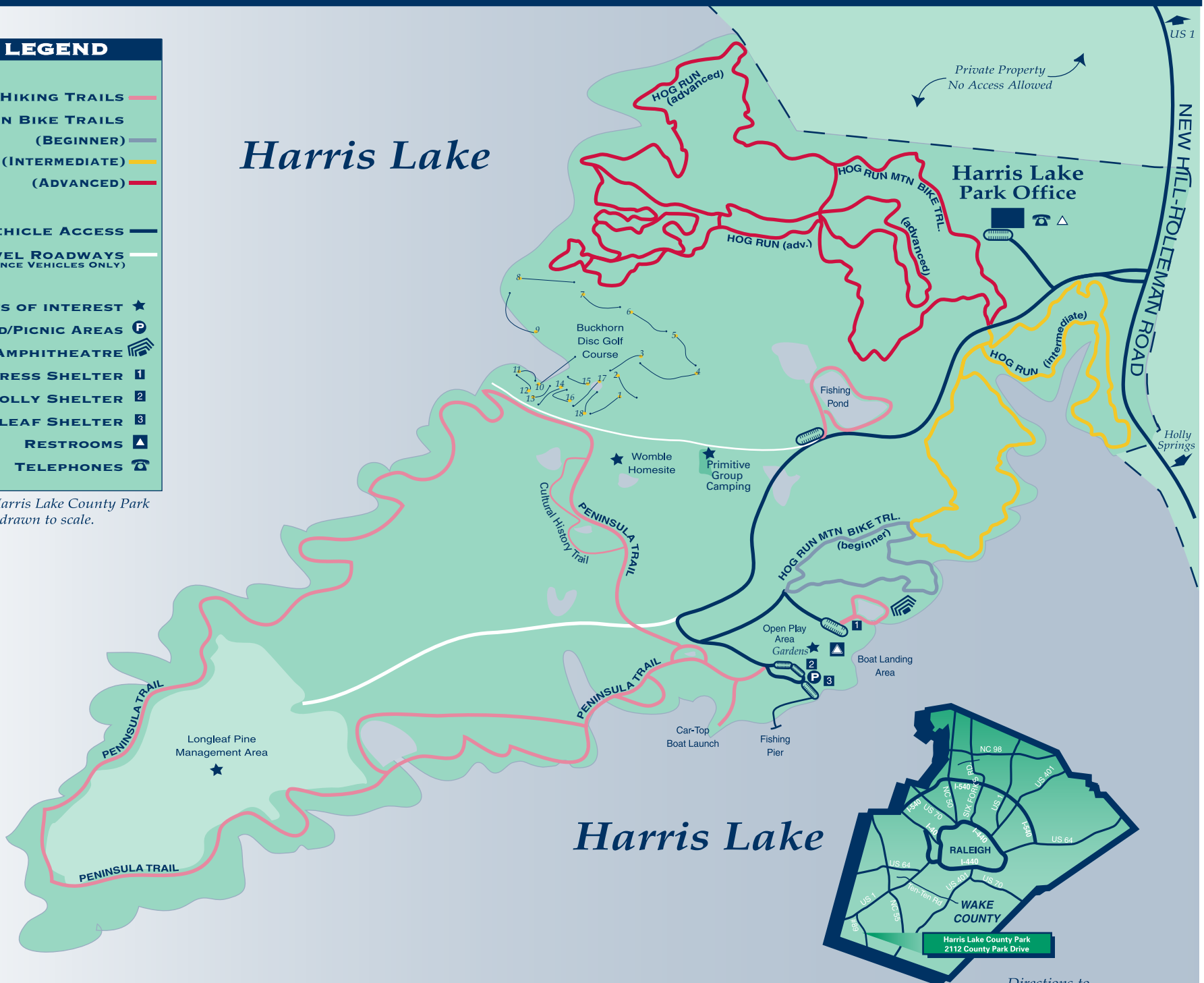
- 1. BE MINDFUL OF OTHER USERS.** Respect the rights of all other trail users and obey all park rules and regulations. Show courtesy when passing other trail users, especially large educational groups.
- 2. PLAN AHEAD.** Know your ability. Become familiar with Harris Lake County Park and the park's rules before use.
- 3. USE DESIGNATED TRAILS.** Please stay on the park's marked trails. Straying off trails tramples vegetation and can cause unwanted erosion.
- 4. WILDLIFE IS WATCHING YOU.** In an environmentally friendly, natural setting such as Harris Lake, many wildlife species abound. This is their home. Take care not to disturb or alarm any wildlife living in the park.
- 5. ALL PETS MUST BE KEPT ON A LEASH AT ALL TIMES.**
- 6. LEAVE NO TRACE.** Tread lightly, leaving behind only footprints. The collection of any plant, animal, rock, or other natural item is prohibited.
- 7. SET A GOOD EXAMPLE.** The success of all trails at Harris Lake County Park depends on its users. Practice good trail ethics, immediately reporting any violators or natural hazards to park staff.
- 8. ALLOW TIME TO FINISH OUTINGS BEFORE PARK CLOSING TIME.** Remember that as dusk approaches, wooded areas along trails become dark much earlier than trails in open spaces.
- 9. BEWARE OF NATURAL HAZARDS.** Remember that you are in a natural environment. Plants such as poison ivy can cause allergic reactions. Please stay away any potentially hazardous debris and notify staff immediately.

HARRIS LAKE COUNTY PARK

MAP LEGEND

- PENINSULA HIKING TRAILS** — (Red line)
- HOG RUN MTN BIKE TRAILS**
 - (BEGINNER) — (Blue line)
 - (INTERMEDIATE) — (Yellow line)
 - (ADVANCED) — (Red line)
- PAVED VEHICLE ACCESS** — (Thick black line)
- GRAVEL ROADWAYS (MAINTENANCE VEHICLES ONLY)** — (Thin black line)
- POINTS OF INTEREST** ★
- PLAYGROUND/PICNIC AREAS** P
- AMPHITHEATRE** 🏠
- CYPRESS SHELTER** 1
- LOBLOLLY SHELTER** 2
- LONGLEAF SHELTER** 3
- RESTROOMS** 🚻
- TELEPHONES** ☎

These maps of Harris Lake County Park are not drawn to scale.



Directions to Harris Lake County Park:
From US 1 South, take exit #89.
Turn left on New Hill-Holleman Road.
Park is located 2.8 miles on right.

A DAY AT HARRIS LAKE

The 680 acre park forms a peninsula on beautiful Harris Lake. Harris Lake County Park is located in New Hill, NC (Southwestern Wake County) and is convenient to Raleigh, Cary, Apex, Holly Springs, and Fuquay-Varina.

ENVIRONMENTAL EDUCATION OUTREACH AND ON-SITE PROGRAMS

Harris Lake offers a variety of environmental education programs for public and private schools, organized groups, and the general public. Programs are designed to accommodate a variety of age groups and curriculum. Programs given on-site are charged at an hourly rate of \$25/ per program hour and staff required. Outreach programs are charged at an hourly rate of \$30/ per program hour and additional staff required. Contact the park office for additional information.

HARRIS LAKE COUNTY PARK

WAKE COUNTY PARKS, RECREATION, AND OPEN SPACE



HARRIS LAKE COUNTY PARK

PARK RULES AND REGULATIONS

Safety and enjoyment go hand in hand at Harris Lake County Park. The following rules and regulations have been established to insure a safe and pleasant visit.

1. **SPEED LIMIT IS 20 MPH.**
2. **PETS MUST BE KEPT ON A LEASH.**
3. **OPEN FIRES ARE NOT ALLOWED.**
4. **PARK ONLY IN DESIGNATED AREAS.**
No parking is allowed on roadsides.
5. **THE FOLLOWING ARE PROHIBITED:**
 - a. *Alcoholic beverages.*
 - b. *Firearms.*
 - c. *Hunting.*
 - d. *Swimming.*
 - e. *Collection or removal of any animal or plant material.*
 - f. *Amplified music.*

Help keep our parks beautiful. Place trash and recycling in the appropriate containers. Learn more about other parks operated by Wake County Parks, Recreation and Open Space. Information is available at park office, in our brochures or you can visit us at: www.wakegov.com

HARRIS LAKE COUNTY PARK
2112 COUNTY PARK DRIVE
NEW HILL, NC 27562
(919) 387-4342

HARRIS.LAKE@CO.WAKE.NC.US

Printed on recycled paper. LA-10/07



HARRIS LAKE COUNTY PARK



HARRIS LAKE COUNTY PARK
FISHING PIER

• • • • •

PARK HOURS
8:00 A.M. - SUNSET,
SEVEN DAYS A WEEK.
(contact the park for seasonal closing times)

TELEPHONE
(919) 387-4342

• • •

HARRIS LAKE COUNTY PARK
IS CLOSED
THANKSGIVING DAY
CHRISTMAS EVE
CHRISTMAS DAY
NEW YEAR'S DAY

FISHING

The fishing pond is managed and stocked with channel catfish for fishing opportunities. All North Carolina freshwater fishing laws and regulations apply. A fishing pier with handicap accessibility is located on Harris Lake near the picnic area. The pier was built in cooperation with NC Wildlife Resources Commission, Progress Energy, and Wake County. Ask about the Tackle Loaner Program! The Tackle Loaner Program, through the North Carolina Wildlife Resource Commission, allows participants to check out a rod and reel combo and also **adaptive fishing equipment** made especially for persons with limiting arm and hand mobility.

CAR TOP BOAT LAUNCH

Car top boats such as **canoes and kayaks** may be launched from the park. The launch site is located near the Peninsula Trail Head and picnic area. No watercraft with trailers can be launched from the park. These users must use the Holloman or Highway 42 boat ramps located in other areas of Harris Lake. Access to lake for hunting purposes not permitted from park.

PLAYGROUND

Designed for **children** of all ages, our large playground is very convenient to parking, restrooms and the picnic areas. The playground is unsupervised by park staff; therefore, parents are encouraged to supervise their children's activity. An open play area is also available nearby.

PICNIC OPPORTUNITIES

Picnicking opportunities are available for both large groups and individual families. There is a lake side picnic area with picnic tables placed in several locations. For groups, there are three picnic shelters available for rent. Each shelter has a cooking grill, picnic tables, and horseshoe pits. Restrooms, a playground, and a large open play area are convenient to the picnic area. Shelter reservations can be made by calling 387-4342.

RESERVATION FEES

- Longleaf Shelter \$80* (100 person capacity)
- Loblolly Shelter \$60* (50 person capacity)
- Cypress Shelter \$60* (50 person capacity)

Fees cover a full day rental (9a.m. - close)

* \$50 security deposit is also required for all shelter reservations. Security deposit will be returned within 10 working days if shelter is left clean and undamaged.

PRIMITIVE GROUP CAMPING

Primitive organized group camping is offered at Harris Lake County Park. Groups must be supported by a governing body. The primitive camping site contains very minimal improvements and has a capacity of 50 persons including children and adults. Fee: \$30 per night (reservation only and payment in advance is required).

CAUTION!

There are many remnants of an old farming community still on the premises. This includes barbed wire, broken glass, rusted tin, and old wells. The park staff is working on removing these hazards. Please exercise extreme caution while in the park and notify park staff if you come across any of these hazards.

Longleaf Pine Stand (above)



Loblolly Shelter (above)

