



## **Definitions**

*Intake:* Animals admitted to the Animal Center. These include animals surrendered by the general public, picked up by Animal Control and animals born at the Center.

*Adoption:* Includes animals adopted to new homes and transferred to qualifying rescue groups.

*Reclaim:* Animals reclaimed by their owners after being found as strays or after completing quarantine period.

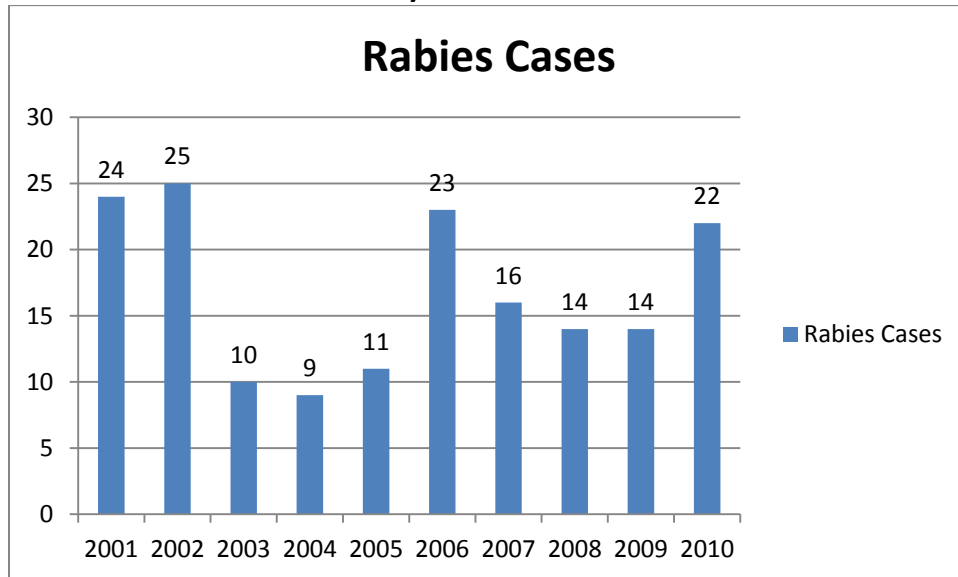
*Euthanasia:* Animals humanely euthanized at the Center. This includes animals that reside at the Animal Center and animals surrendered by their owner for euthanasia for medical or behavioral reasons.

## **Animal Center News**

This month, we assisted other local shelters and rescues in the mass surrender of dogs and cats from an animal testing lab in eastern North Carolina. Our Center took in five cats and four dogs, but we transported many more for the SPCA of Wake County, Tri-Beagle Rescue, Guildford County Animal Shelter and Safe Haven for Cats. The dogs and cats that stayed with WCAC, went into foster care within 12 hours of arriving. Staff worked until 2 AM to get them all set up the night we arrived and were back early to get them into foster care. Great work team!

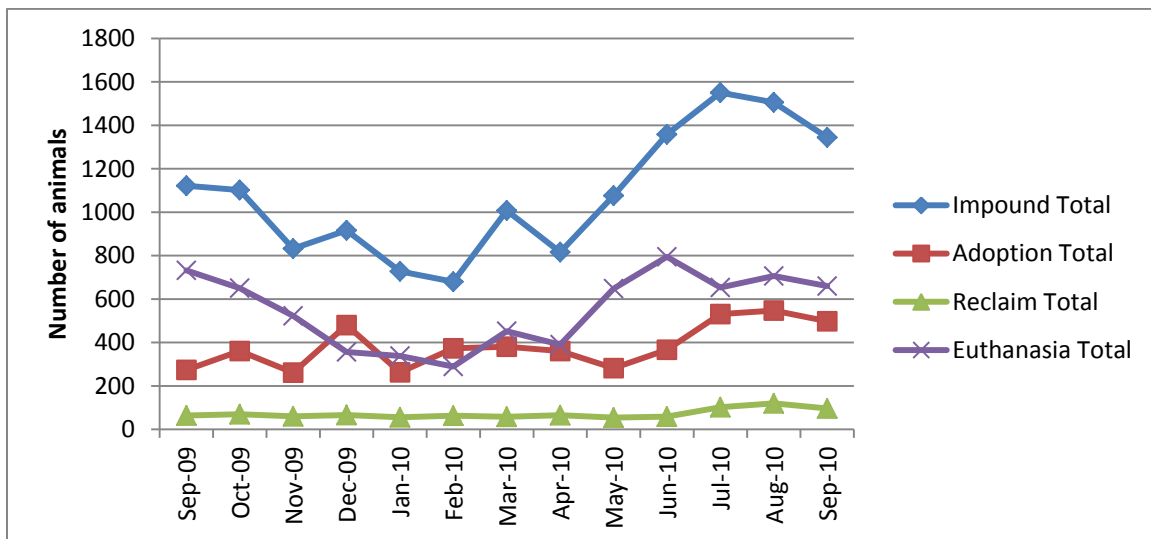
We continue to see record adoptions and transfers and we thank the citizens of Wake County for your continued support.

**Rabies: Positive confirmed laboratory cases**



n=2 September 2010; year to date cases=22; As compared to the last few years, we are on track to have an above average year in Wake County for positive rabies cases. Wake County averages 15.8 laboratory confirmed cases each year; since 2001, raccoon tests account for 56% of all species that test positive in Wake County; rabies is enzootic (present in wildlife) in all NC counties

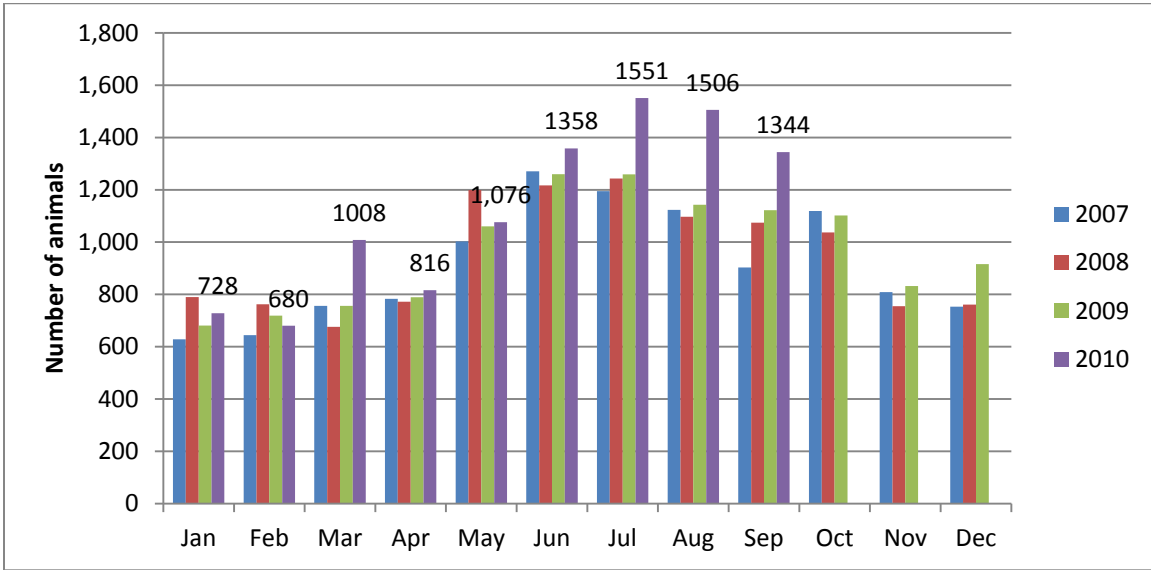
**Animal Center Statistical Summary**



**Ebb and Flow of animal intake:** As depicted above, animal intake increases significantly in the warm months and drops in the cold months. This is typically associated with an

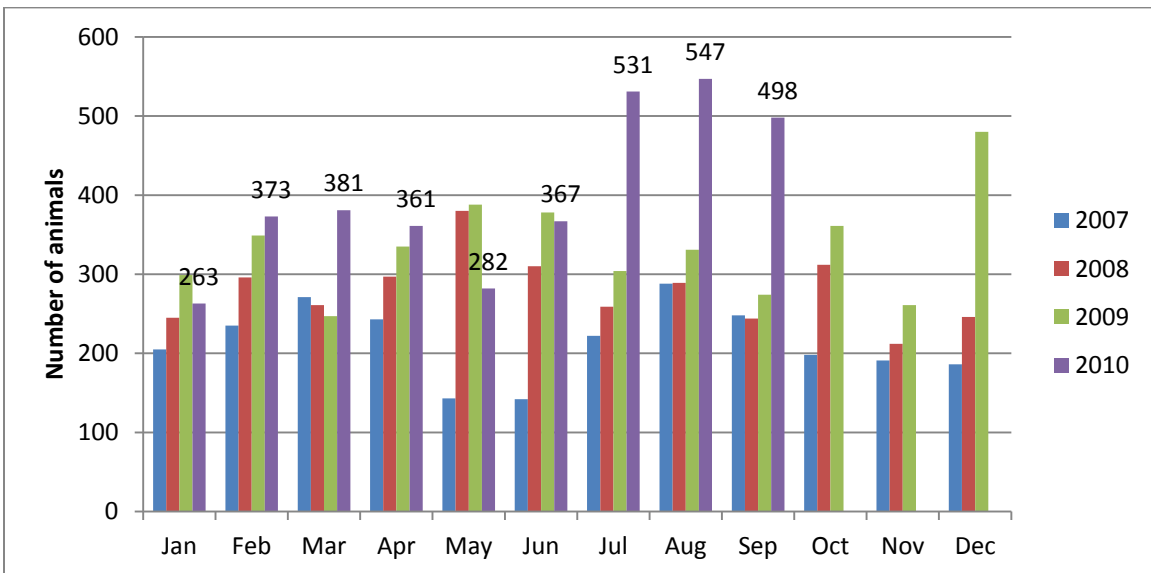
increase in puppy and kitten litters in warm months. Adoptions do not normally increase to match the increase in intake so euthanasia rates can increase with intake.

**Animal Center Intake monthly comparison**



*n=1344; Intake is 20% higher than September 2009. This fiscal year, the Animal Center became the sole intake facility in the County. We are currently experiencing an 25% increase for the fiscal year.*

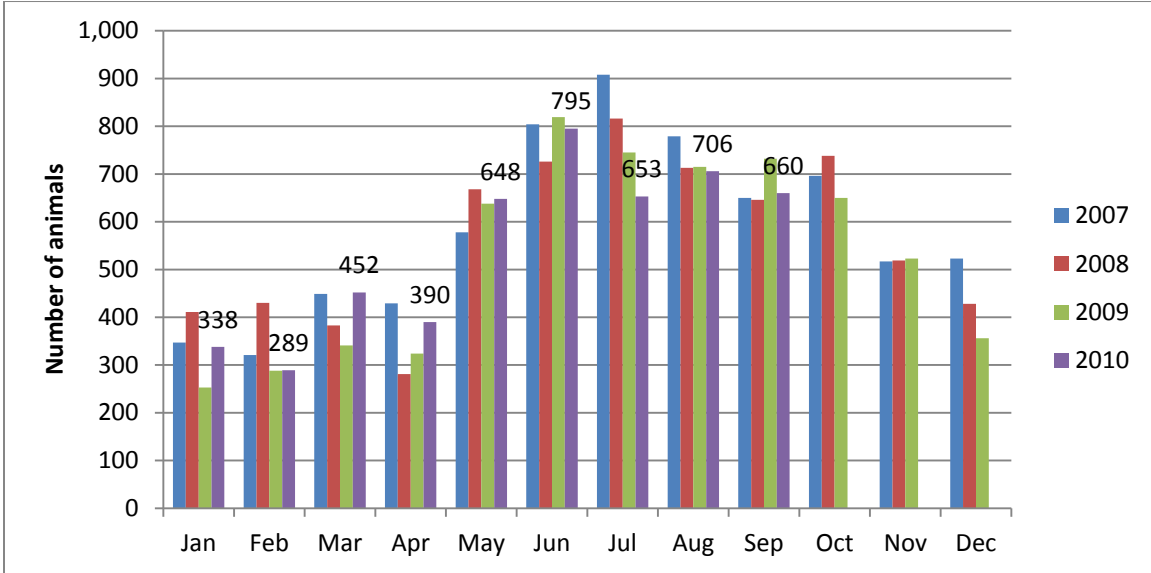
**Adoption/Transfer Monthly Comparison**



*n=498; data represents a combination of typical adoptions to new families and transfers to partner rescue groups; 82% increase in adoptions over September 2009. This is a*

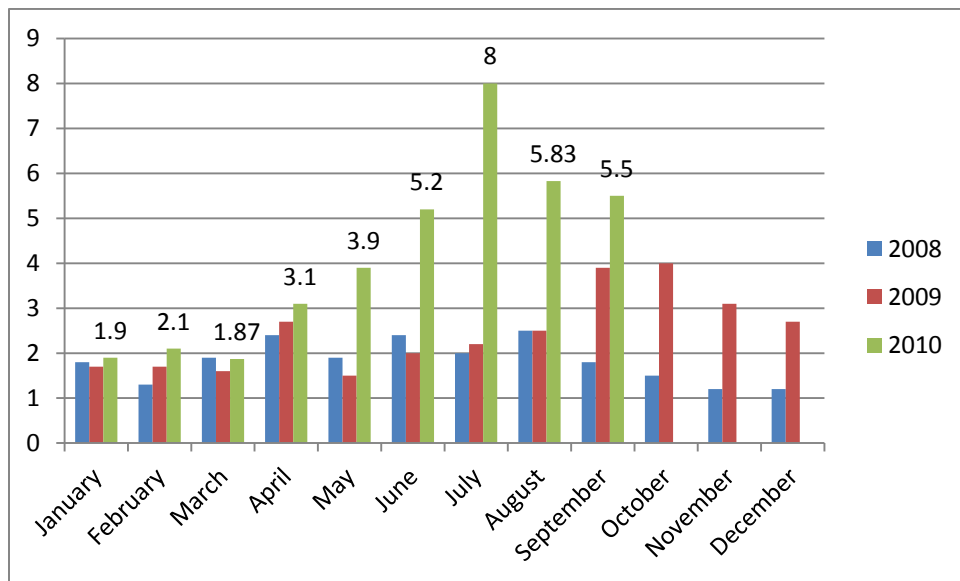
tremendous increase and we are very proud of the support we have received from the citizens of Wake County!

**Euthanasia monthly comparison**



*n=660; the euthanasia numbers are 10% lower than this month last year. This is very significant because even while receiving 20% more animals, we euthanized less than the year before.*

**Volunteer hours by FTE**



*n=5.5 FTEs; Volunteers logged enough hours this month to equal 5.5 extra full time employees. This includes dog walking, socialization, off-site events and work promoting animals in the community, just to name a few.*

**Wake County Animal Center  
Statistical Report**

**Date Range: July 1-September 30**

**Date Prepared:**

**10/1/2010**

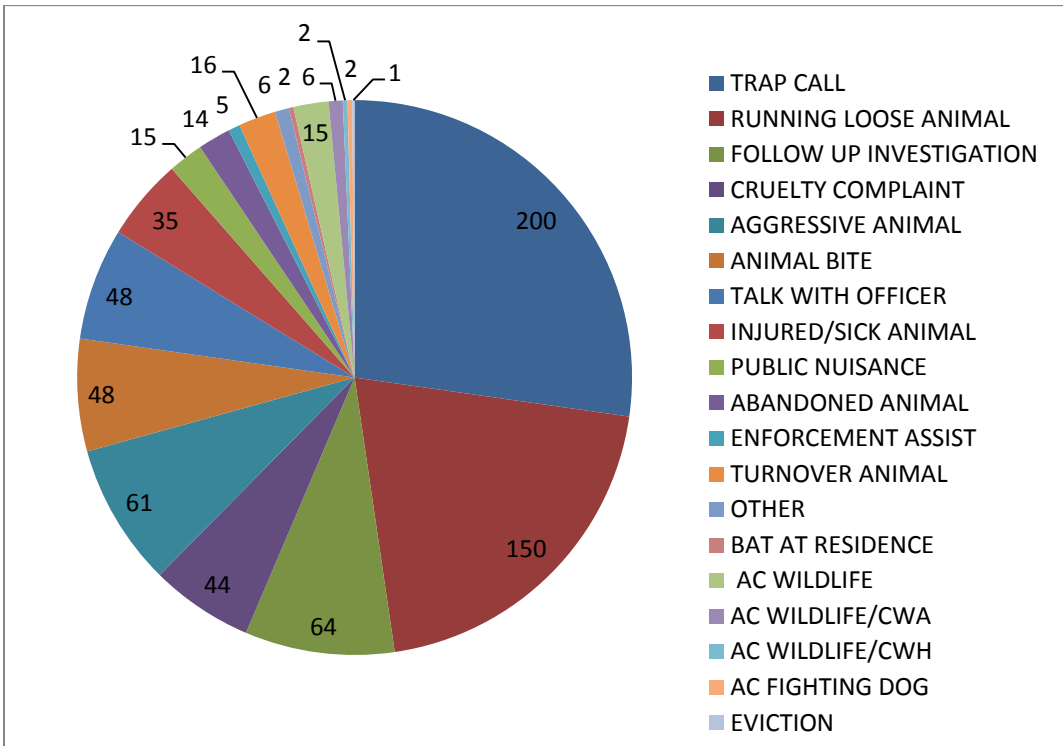
	YTD FY09	Percent	YTD FY10	Percent	YTD FY11	Percent	Sep-10	Percent
Intake Dog	1534		1488		1924		587	
Intake Cat	1798		1921		2291		718	
Intake Other	82		88		171		39	
<b>Intake Total</b>	<b>3414</b>		<b>3497</b>		<b>4386</b>		<b>1344</b>	
Adoption Dog	451	29%	454	31%	706	37%	193	33%
Adoption Cat	178	10%	191	10%	398	17%	145	20%
Adoption Other	15	18%	32	36%	44	26%	25	64%
<b>Adoption Total</b>	<b>644</b>	<b>19%</b>	<b>677</b>	<b>19%</b>	<b>1148</b>	<b>26%</b>	<b>363</b>	<b>27%</b>
Transfer Dog	114	7%	195	13%	199	10%	72	12%
Transfer Cat	19	1%	29	2%	205	9%	56	8%
Transfer Other	15	18%	10	11%	26	15%	7	18%
<b>Transfer Total</b>	<b>148</b>	<b>4%</b>	<b>234</b>	<b>7%</b>	<b>430</b>	<b>10%</b>	<b>135</b>	<b>10%</b>
Reclaim Dog	170	11%	171	11%	279	15%	92	16%
Reclaim Cat	21	1%	27	1%	35	2%	4	1%
Reclaim Other	2	2%	1	1%	4	2%	0	0%
<b>Reclaim Total</b>	<b>193</b>	<b>6%</b>	<b>199</b>	<b>6%</b>	<b>318</b>	<b>7%</b>	<b>96</b>	<b>7%</b>
Euthanize Dog	655	43%	571	38%	508	26%	157	27%
Euthanize Cat	1485	83%	1604	83%	1448	63%	488	68%
Euthanize Other	35	43%	20	23%	66	39%	15	38%
<b>Euthanize Total</b>	<b>2175</b>	<b>64%</b>	<b>2195</b>	<b>63%</b>	<b>2022</b>	<b>46%</b>	<b>660</b>	<b>49%</b>

	Total #	Percentage
Change in intake from FY10 to FY11	889	25%
Change in adoptions from FY10 to FY11	471	70%
Change in transfers from FY10 to FY11	196	84%
Change in euthanasia from FY10 to FY11	-173	-8%
Change in total cat live releases	391	158%
Change in cat live release percentage		15%
Change in total dog live releases	364	44%
Change in dog live release percentage		6%

**NOTE: A decrease in total numbers or percentage will show a (-) symbol and be in red. Increases will be in blue and will not show a (+) symbol.**

**NOTE: The first three columns show three different fiscal years, using the date range indicated on the top left corner of the report. Each month, we will compare the same date range across the current and past two fiscal years for equal comparison.**

### Animal Control Field Data

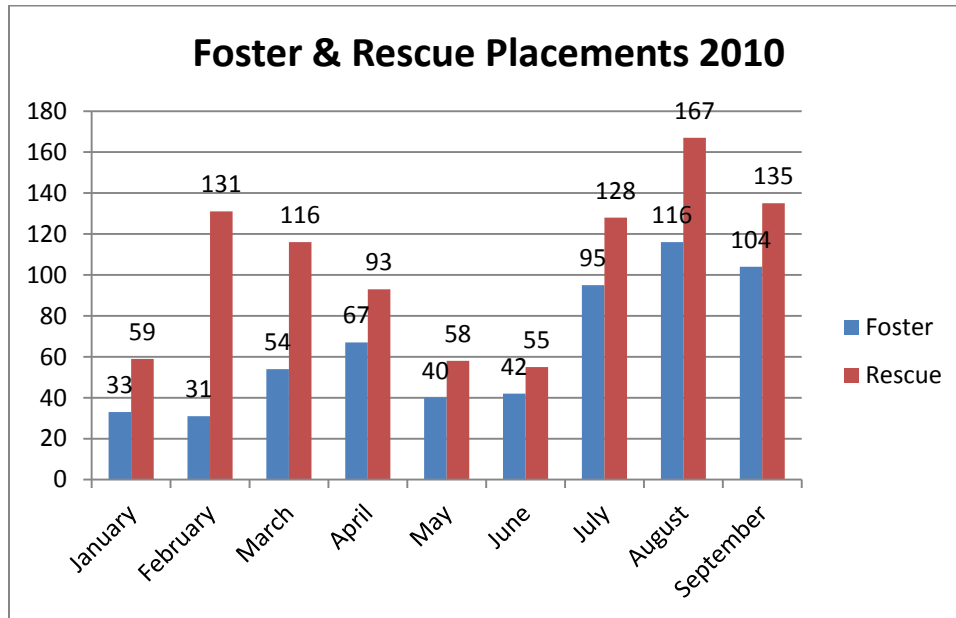


Wake County Animal Control responded to 734 requests for service in September 2010. Complaints for stray or loose animals continues to contribute to about half of all calls.

## Foster and Rescue Report

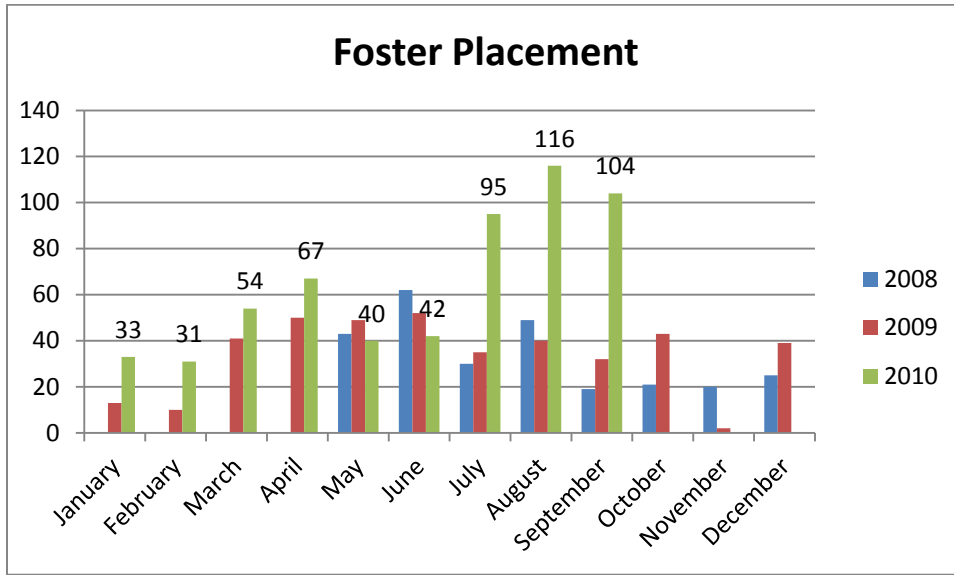
During the month of September, one hundred four (104) animals were placed into foster care.

During the month of August, one hundred thirty five (135) animals were placed into the care of partnering rescue groups and shelters.



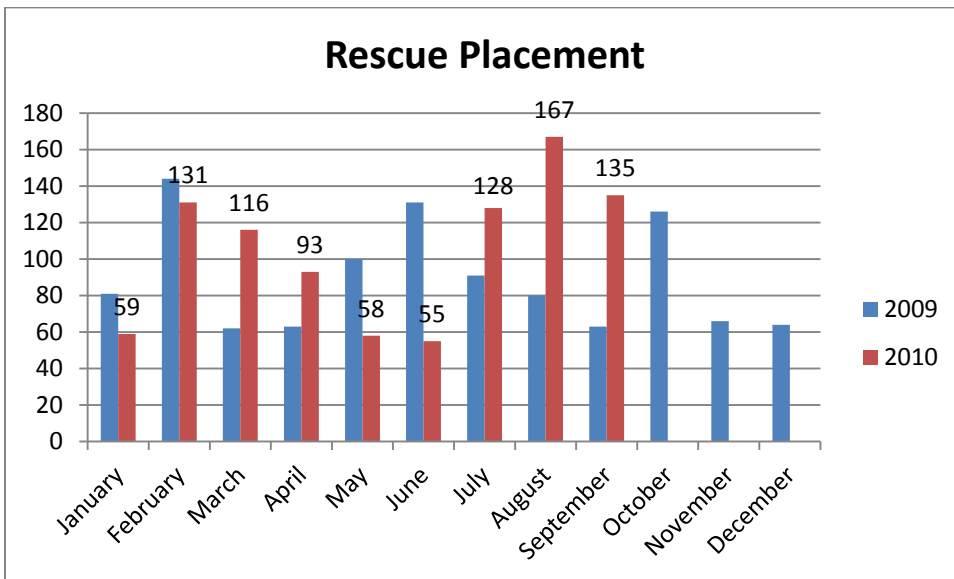
*n=104 foster, 135 rescue; both our rescue partners and foster parents rallied to help support the Wake County Animal Center during the month of August.*

**Year over year comparison: Foster Placement**



*n=104; September of 2010 is another record-breaking month for the foster program. More animals were placed into foster care during this month than any other month since 2009.*

**Year over year comparison: Rescue Placement**



*n=135; September of 2010 Rescue placement is an alternative placement method. Many local not-for-profit groups help the animals in Wake County by providing care and adoption services in alternative locations to the standard shelter.*

## Top Canine and Feline Transfers

Shelter/Rescues	Dogs Transferred
SPCA of Wake County	41
HEART	3
Finding Great Homes for JRTs	3

Shelters/Rescues	Cats Transferred
SPCA of Wake County	20
Goathouse Refuge	8
SAFE Haven for Cats	6
Paw Prints Animal Rescue	5
Pet & People Foundation	4