

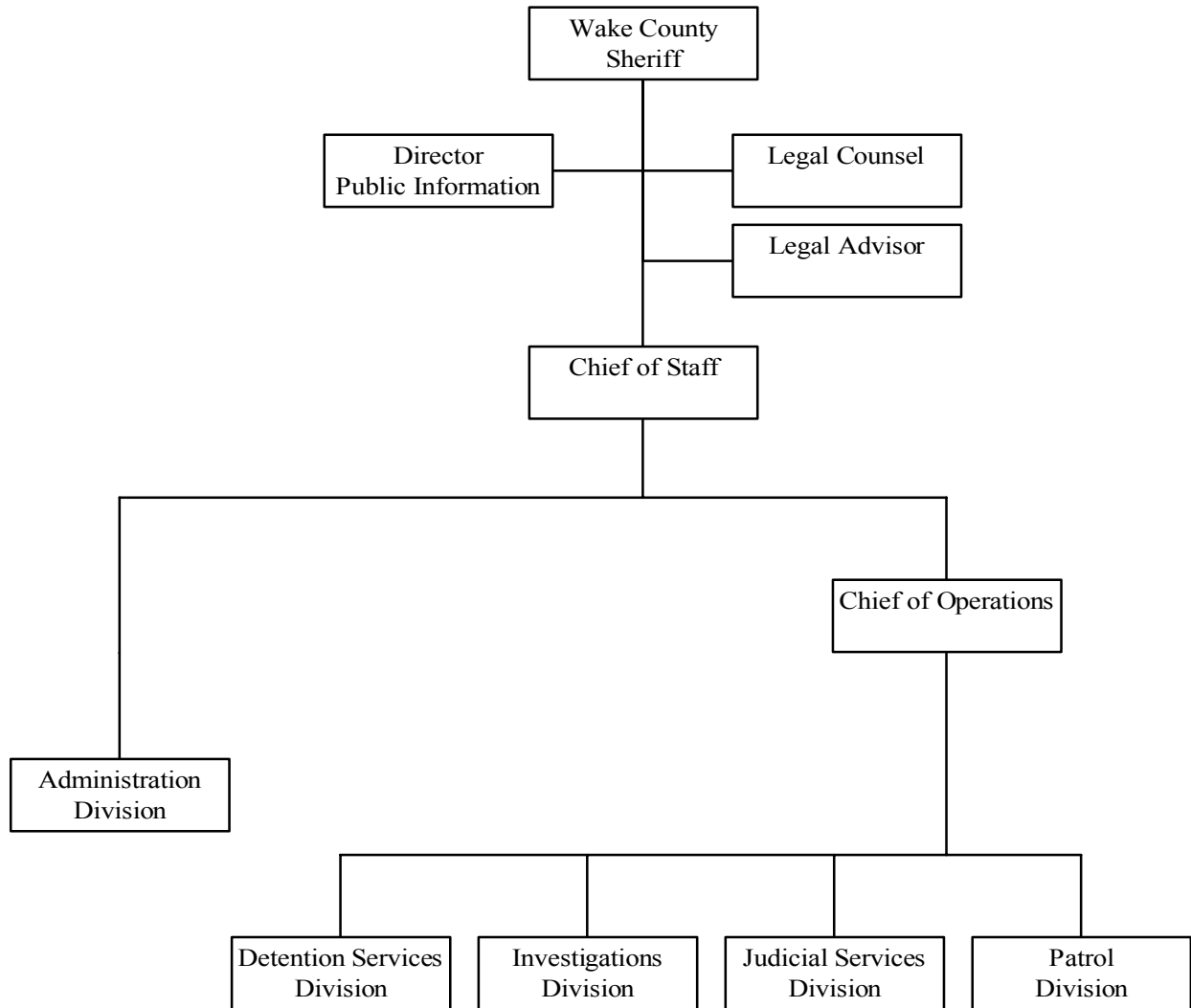
## Wake County Sheriff

---

Office of the Sheriff Organization Chart .....	156
Office of the Sheriff .....	157

---

**Office of the Sheriff Organization  
Fiscal Year 2003-2004**



## Office of the Sheriff

---

### Budget Summary

	FY2001-2002	FY2002-2003	FY2003-2004	FY2003-2004
	Actuals	Current Budget	Recommended	Adopted
Personal Services	\$26,402,935	\$28,414,004	\$32,056,502	\$32,056,502
Operating Expenses	\$6,279,166	\$7,713,760	\$8,254,044	\$8,254,044
Capital Outlay	\$522,263	\$476,240	\$83,981	\$83,981
<b>Expenditure Totals</b>	<b>\$33,204,364</b>	<b>\$36,604,004</b>	<b>\$40,394,527</b>	<b>\$40,394,527</b>
Intergovernmental Revenue	\$445,976	\$861,745	\$905,166	\$905,166
Fees & Other Revenues	\$2,851,145	\$2,901,500	\$2,830,338	\$2,830,338
<b>Revenue Totals</b>	<b>\$3,297,121</b>	<b>\$3,763,245</b>	<b>\$3,735,504</b>	<b>\$3,735,504</b>

### Position Count

	FY2001-2002	FY2002-2003	FY2003-2004	FY2003-2004
	Actual	Current	Recommended	Adopted
Number of FTE's	567.00	578.00	648.00	648.00

### Department Description

*Philosophy of the Sheriff:* "Serving the citizens is a privilege and not a right. It is our duty to serve all of the citizens of this County to the best of our ability, and serving these citizens is and will always be the purpose of our organization."

The Office of Sheriff is a constitutional office in North Carolina. The Sheriff is an official elected by the people of Wake County and is the chief law enforcement officer for the county government. The Sheriff has jurisdiction throughout the county including both the incorporated and unincorporated areas and provides primary law enforcement for the unincorporated areas of the county. As the chief law enforcement officer for the County, the Sheriff provides requested assistance and support to other local law enforcement departments and to State and Federal law enforcement agencies.

### List of Major Services

- Law Enforcement.
- Safety and Security in the Wake County Schools.
- Detention and Incarceration of Inmates Sentenced or Awaiting Trial.
- Service of Judicial Process.
- Courthouse Security.
- Other Miscellaneous Duties.

**Law Enforcement.** The Sheriff's direct law enforcement duties include patrolling, responding to civil disaster events, preventing crime, serving domestic violence protection orders, investigating violations of the law, and apprehending law violators. The Sheriff also provides radio communications, evidence, and property control services related to the administration of law enforcement activities and transports all per-

## Office of the Sheriff

---

sons involuntarily committed to a mental health institution located outside Wake County.

***Safety and Security in the Wake County Schools.*** The Sheriff has the responsibility of providing school resource officers for high schools and middle schools in the unincorporated areas of the county. Additional school resource officers are also provided for middle schools in the City of Raleigh and the Town of Wake Forest. These school resource officers are a vital element in the safety and security of students, faculty and staff at Wake County Public Schools.

***Detention and Incarceration of Inmates Sentenced or Awaiting Trial.*** The Sheriff is responsible for keeping and maintaining two separate detention facilities: the Public Safety Center Detention Facility and the Hammond Road Detention Annex. The Sheriff also transports prisoners to and from court appearances, to the various units of the North Carolina Department of Correction across the state, and to and from other County Sheriff's Offices in the state. Medical care for the inmates is provided by a full-time physician employed by the Sheriff, a full-time nursing staff on duty twenty-four hours a day, and through contract with external medical providers.

***Service of Judicial Process.*** The Sheriff, as the enforcement arm of the North Carolina General Court of Justice, is responsible for serving civil and criminal process issued by the courts. The service of this process includes arresting persons and bringing them before the courts, the seizure and sale of personal and real property to satisfy court judgments, and the eviction of tenants to return possession of premises to landlords.

***Courthouse Security.*** The Sheriff is responsible for courtroom security in the twenty-one district and Superior Courtrooms in Wake County. Courtroom security includes the physical security of the courtroom, the personal safety of all who attend court proceedings, and the control and supervision of persons in custody when brought for court appearances. In addition to courtroom security, the Sheriff is responsible, in coordination with General Services Administration, for the physical security of the entire courthouse.

***Other Miscellaneous Duties.*** A number of other duties have been imposed as statutory duties of the Sheriff. These duties include: issuing pistol purchase permits and concealed handgun carry permits, registering sexual offenders and predators residing in Wake County, registering video poker games located within the County, and issuing parade and picketing permits for the unincorporated areas of the County.

## Business Plan Priorities

- Fully implement Hammond Road Phase 1A to alleviate overcrowding in Public Safety Detention Center. This will require 68 additional detention personnel to staff the opening of the new detention space.
- Enhance the Office's investigative services to respond to the increase in credit card fraud by adding two additional investigators.
- Develop strategies to reduce average number of days in custody despite a continued decline in the cases eligible for pre-trial release and a continued increase in the County's unemployment rate.
- Reduce received to arrived response time.
- Increase patrol coverage and reduce officer/citizen ratio in unincorporated areas.

## Office of the Sheriff

---

- Increase traffic safety.
- Expand and enhance inter-agency cooperation with and between Wake County law enforcement and public safety agencies and with state and federal law enforcement agencies.
- Terrorism, gang, and street level drug activity planning and preparation.
- Expand and enhance Crime Prevention to include community outreach and involvement.
- Implement Citizens' Well Check program for senior and disabled citizens.
- Implement K9 Team.
- Implement Special Response Team to respond to school emergencies, high risk crisis events, and to provide additional emphasis in high crime areas.
- Begin transition from VHF to 800mhz radio communications system.
- Staff the Southern Regional Center with investigators.
- Reduce the cost of inmate medical care.

### Highlights

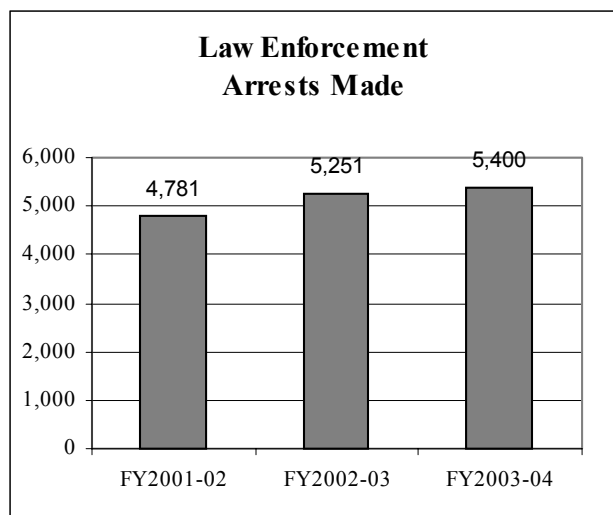
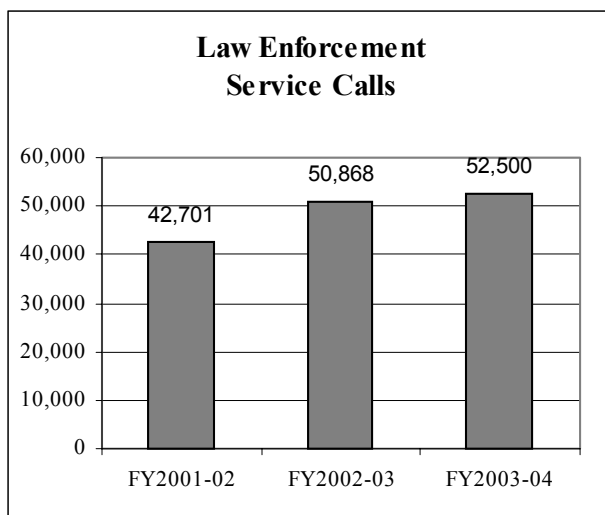
- Reduced response time (call received to unit arrived) by 48% to 8.09 minutes.
- Increased arrests by 9.8%
- Maintained an overall clearance rate for criminal investigations of 37.6%
- Reduced the backlog of Judicial Process and the number of days from “receipt” to “service”.
- Fully implemented and operated the Federal "Cops in Schools" grant by training and deploying an additional 15 School Resource Officers in Wake County, the City of Raleigh, and the Town of Wake Forest.
- Designed and implemented a fair, objective, and efficient hiring process to ensure the best selection of employees today and in the future.
- Filled all existing enforcement officer, detention officer, and tele-communicator vacancies for the first time in over ten years. All law enforcement officers and a number of the detention officers hired were certified, experienced, and professional officers.
- Studied and analyzed utilization of manpower and reorganized the department to achieve a greater work efficiency with existing staff.
- Transferred six investigators to the Eastern Regional Center for quicker response and more efficient use of time.

Issues on the Horizon include:

- Plan and prepare for implementation of Hammond Road Phase IB to begin construction in FY '04.
- Plan and prepare for relocation of Sheriff's Training Center from Mount Auburn to its future location.
- Expand and enhance the K9 and Special Response Teams.
- Integrate computerized data systems and migrate public information to internet platform.
- Develop a contingency plan to meet statutory requirement to transport involuntarily committed persons.
- Maintain competitive starting salaries to recruit quality law enforcement and detention officers.
- Address salary compression to remain competitive with other law enforcement agencies and retain qualified professional law enforcement and detention officers.

## Office of the Sheriff

<b>Performance Measurement</b>	<b>FY2001-02 Actual</b>	<b>FY2002-03 Actual</b>	<b>FY2003-04 Objective</b>
<b>Law Enforcement</b>			
Service calls	42,701	50,868	52,500
Response time (received to arrival)	16.73	n/a	n/a
Response time (dispatched to arrival)	n/a	9.1	8.1
Reports filed	6,523	6,974	7,200
Investigations made	5,001	4,995	5,150
Investigations cleared	n/a	37.60%	41.10%
Arrests made	4,781	5,251	5,400
Warrants, Summons, Orders for Arrest	9,943	9,219	9,750
Civil process received	74,708	64,687	69,400
Execution and judgments collected	\$2,323,865	\$2,502,437	\$2,502,000
<b>Regulatory Duty</b>			
Concealed handgun permits processed	n/a	1,042	1,100
Pistol permits processed	10,617	12,430	14,000
Sex offenders registered	n/a	79	85
<b>Detention</b>			
Average daily population	752	890	1,150



# Office of the Sheriff

