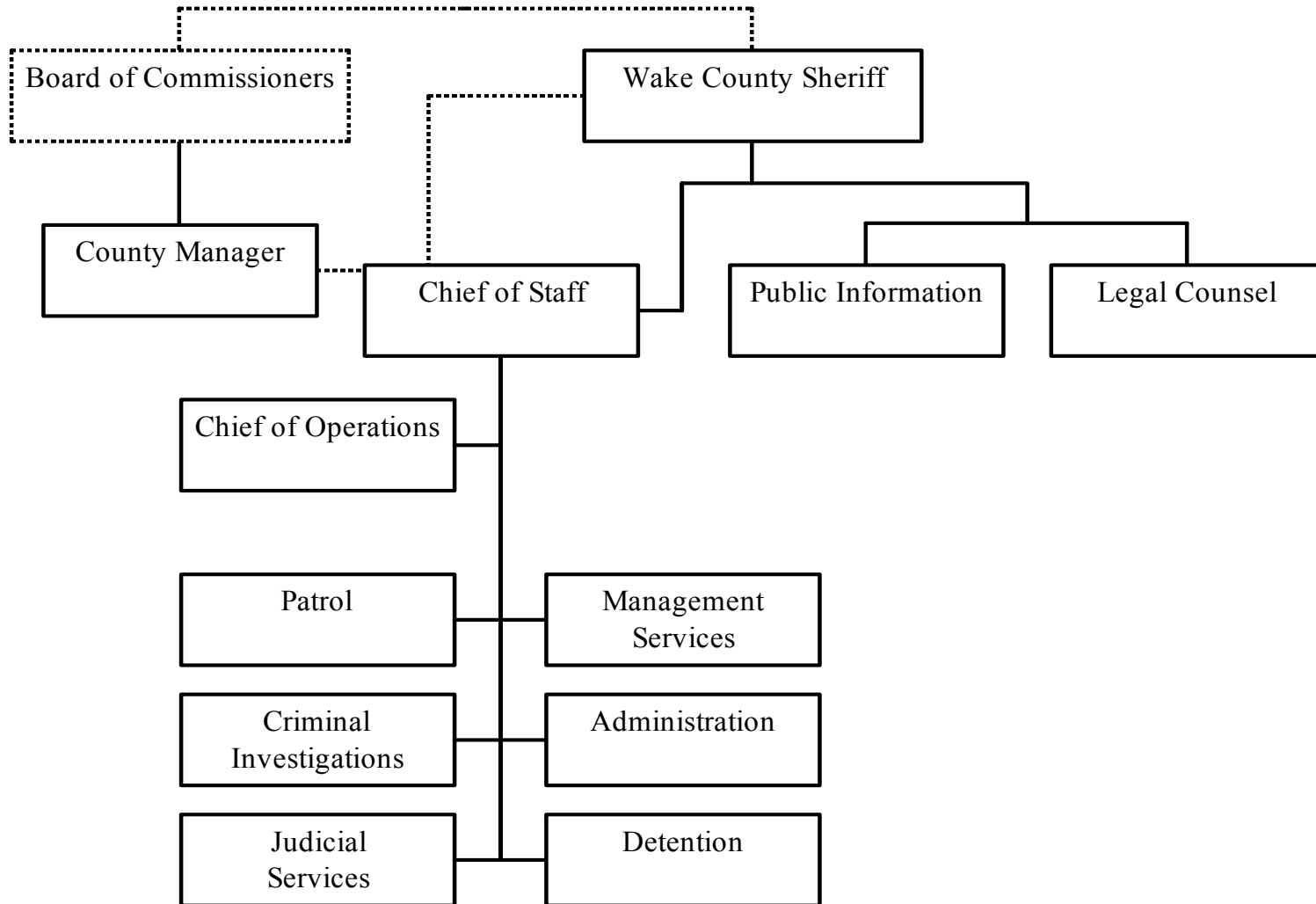


OFFICE OF THE SHERIFF



OFFICE OF THE SHERIFF

Department Summary

		FY 2004 Actual	FY 2005 Adopted Budget	FY 2005 Current Budget	FY 2006 Adopted Budget
Personnel Services	\$	32,382,482	33,776,827	34,686,530	37,498,213
Operating Expenses		9,598,063	9,947,433	10,237,692	11,351,103
Capital Outlay		131,280	278,000	378,257	142,500
Expenditure Totals	\$	42,111,825	44,002,260	45,302,479	48,991,816
Intergovernmental Revenues	\$	1,038,911	751,110	1,202,365	689,400
Fee & Other Revenues		4,838,554	3,524,500	3,519,500	3,387,000
Revenue Totals	\$	5,877,465	4,275,610	4,721,865	4,076,400
Number of FTEs		648.00	648.00	653.00	774.00

Department Purpose and Goals

The Office of the Sheriff is a constitutional office in North Carolina with the Sheriff, the chief law enforcement officer for the County, being elected by the voting citizens of Wake County. The Sheriff has jurisdiction throughout the county including both the incorporated and the unincorporated areas. This office provides primary law enforcement for the unincorporated areas of the county. Public safety of citizens is a high priority of any local government. Wake County is no exception to this assumption. As the population of the County grows, demands for Sheriff Office services increase also. The Sheriff and his staff are dedicated to the philosophy that “serving the citizens is a privilege and not a right; it is the duty of all employees to serve all of the citizens of this county to the best of one’s ability; serving these citizens is and will always be the purpose of the organization.” The Sheriff provides requested assistance and support to other local law enforcement departments and to state and federal law enforcement agencies.

There are five organizational divisions: administration, judicial services, patrol, investigations, and detention. For budgetary purposes, detention is a separate account while the other four divisions are consolidated into one “law enforcement” budgetary account. Assignment of deputies to various organization divisions in law enforcement is dynamic as rotations occur frequently.

OFFICE OF THE SHERIFF

Division Summary - Law Enforcement

		FY 2004 Actual	FY 2005 Adopted Budget	FY 2005 Current Budget	FY 2006 Adopted Budget
Personnel Services	\$	19,481,121	20,545,761	21,206,228	21,287,059
Operating Expenses		4,707,899	5,408,508	5,629,048	5,840,618
Capital Outlay		81,437	178,000	278,257	37,500
Expenditure Totals	\$	24,270,457	26,132,269	27,113,533	27,165,177
Intergovernmental Revenues	\$	1,024,891	756,110	1,202,365	669,400
Fee & Other Revenues		896,198	746,500	746,500	1,300,000
Revenue Totals	\$	1,921,089	1,502,610	1,948,865	1,969,400
Number of FTEs		374.00	374.00	380.00	382.00

Law Enforcement Purpose and Goals

Law enforcement duties include patrolling, responding to civil disaster events, preventing crime, serving domestic violence protection orders, investigating violations of the law, and apprehending law violators. The Sheriff also provides radio communications, evidence and property control services related to investigations of criminal activity, and transports involuntarily committed persons to mental health institutions located outside Wake County.

The Sheriff has the responsibility of providing school resource officers for high schools and middle schools in the unincorporated areas of the county. Additional school resource officers are also provided for middle schools in the city limits of Raleigh and Wake Forest. These officers are considered as vital resources in the safety and security of students, faculty and staff of the Wake County Public School System. The School System shares in the cost of this service.

The Sheriff's Office is responsible for serving civil and criminal processes issued by the courts. The service of this process includes arresting persons and bringing them before the courts, seizing and selling personal and real property to satisfy court judgments, and evicting tenants to return possession of premises to landlords.

The Sheriff also is responsible for courtroom security in the twenty-six District and Superior courtrooms in Wake County. Courtroom security includes the physical security of the courtroom, the personal safety of all who attend court proceedings, and the control and supervision of persons in custody when brought for court appearances.

Other duties of the Sheriff's Office include:

- Issuing pistol purchase permits and concealed handgun carry permits
- Register sexual offenders and predators residing in Wake County (including investigating their current address)

OFFICE OF THE SHERIFF

- Register video poker games located within the county
- Issue parade and picketing permits in the unincorporated areas of the county

Major Accomplishments

- Completion of 800 MHz radio implementation in communications center
- Implementation of first phase of use of StopStick® apparatus for apprehending those trying to elude arrest
- Reorganized warrant business practices to increase efficiency and timely search or issuance of warrants
- Increased patrol activity of building and community checks
- Expanded K-9 drug sweep program in cooperation with Wake County Public School System
- Established new 12-week field training officer program for officers with limited field experience
- Reorganized domestic violence office business practices to improve 50B orders to DCI
- Tested and evaluated the pilot “County Fleet Operations Gas Card” program
- Active civil process papers in the field for service maintained below benchmark of 750 on average (prior to 2004, the numbers were above 1000)
- Reorganized civil process administrative functions to meet the goal of entering all process into the automated database within 8 working hours of receipt
- Established a Homicide Cold Case Unit tasked with the responsibility of investigating or re-investigating homicide cases that have been unsolved for long periods of time.
- Established Sheriff’s Traffic Observation Patrol (STOP) team with the purpose of reducing traffic related deaths and injuries (caused by substance abuse) and reduce criminal activity in targeted areas
- Began implementation of home fleet for judicial services deputies

Issues for FY 2006

- Develop 3 to 5 year business plan
- Expand K-9 team to 10
- Expand home fleet for judicial services deputies
- Improve automation system for better data management
- Pursue data management sharing with other law enforcement agencies in the region
- Implementation of a salary administration plan that will make law enforcement officers pay competitive with other jurisdictions

Horizon Issues

- Construct new training facility
- Expand Special Response Team to respond to high-risk crisis events and to support investigations personnel

OFFICE OF THE SHERIFF

FY 2006 to FY 2008 Business Plan Key Programs, Objectives and Measures

Program Area: Law Enforcement

Key Measures	FY04 Actual	FY05 Estimated	FY05 Target	FY06 Projected	Desired Level
<i>Workload (Output):</i>					
Calls for service	47,660	48,500	N/A	50,000	N/A
Warrants, Summons, Orders for Arrest	10,087	10,600	N/A	11,500	N/A
Arrests made	5,619	5,900	N/A	6,200	N/A
Number of open investigations	5,307	5,500	N/A	5,800	N/A
Civil papers for service received & processed	86,424	88,500	N/A	91,000	N/A
Concealed handgun permits processed	609	710	N/A	800	N/A
Pistol permits processed	10,170	9,000	N/A	9,000	N/A
Sex offenders registered	107	100	N/A	100	N/A
Video poker games registered or moved	66	130	N/A	100	N/A
<i>Effectiveness:</i>					
Response time (received to dispatch)	6.5 min.	4.7 min.	4.5 min.	4.25 min.	4.0 min.
Response time (dispatch to arrival)	10.4 min.	8.5 min.	8.5 min.	8.25 min.	8.0 min.

OFFICE OF THE SHERIFF

Division Summary - Detention

		FY 2004 Actual	FY 2005 Adopted Budget	FY 2005 Current Budget	FY 2006 Adopted Budget
Personnel Services	\$	12,901,361	13,231,066	13,480,302	16,211,154
Operating Expenses		4,890,163	4,538,925	4,608,644	5,510,485
Capital Outlay		49,843	100,000	100,000	105,000
Expenditure Totals	\$	17,841,367	17,869,991	18,188,946	21,826,639
Intergovernmental Revenues	\$	14,020	0	0	20,000
Fee & Other Revenues		3,942,356	2,773,000	2,773,000	2,087,000
Revenue Totals	\$	3,956,376	2,773,000	2,773,000	2,107,000
Number of FTEs		274.00	274.00	273.00	392.00

Detention Purpose and Goals

North Carolina General Statutes 153A-218 authorizes a county to establish, maintain, and operate a local confinement facility. N.C General Statutes 162-22 provides that the Sheriff has the care and custody of the jail. The Wake County Sheriff is responsible for keeping and maintaining two separate detention facilities: the Public Safety Detention facility and the Hammond Road Detention Annex. The Sheriff also transports prisoners to and from court appearances to the various units for the North Carolina Department of Corrections across the state, and to and from other sheriffs' offices. Medical care for the inmates is provided by a full-time physician employed by the Sheriff's Office, a full-time nursing staff on duty twenty-four hours each day, and through contracts with external medical providers.

Major Accomplishments

- Trained 250 staff in gang identification & management of gang members while in custody
- Expanded segregation housing by converting use of housing space from general population housing to properly manage a growing number of violent gang members
- Developed and adopted new procedures manual for facilities operations
- Designed and implemented a new 3-week training program for all new staff to familiarize staff with operations and policy/procedures
- Reorganized bonding area by adding a new workstation to permit two inmates to be processed at one time
- Completed painting administrative and support areas and inmate housing areas on the 6th, 7th, 8th, and 9th housing floors using inmate labor
- Placed an officer on a new duty post in the Public Safety Center

OFFICE OF THE SHERIFF

Detention (cont'd)

- lobby to handle the public's questions regarding inmate information to improve security and operations in the control room
- Implemented new wrist band identification system for both confinement facilities to assist staff in identifying inmates being released
- Reduced overtime expenditures by modifying work schedules

Issues for FY 2006

- Phase 1B of the Hammond Road confinement facilities will open during the fiscal year

- Training for 121 new employees to staff new facility
- Control cost of inmate medical care
- Develop facility process and procedure manual for Phase 1B

Horizon Issues

Phase 1B is expected to be fully operational in FY2006. Current projections are that this facility will be at capacity in FY2007-2008, causing need for Phase 2 to be under construction

FY 2006 to FY 2008 Business Plan Key Programs, Objectives and Measures

Program Area: Detention

Key Measures	FY04 Actual	FY05 Estimated	FY05 Target	FY06 Projected	Desired Level
<i>Workload (Output):</i>					
Average Daily Population	1,138	1,050	N/A	1,250	N/A
Detainees processed	28,000	29,000	N/A	29,000	N/A

This page intentionally blank