

Definitions

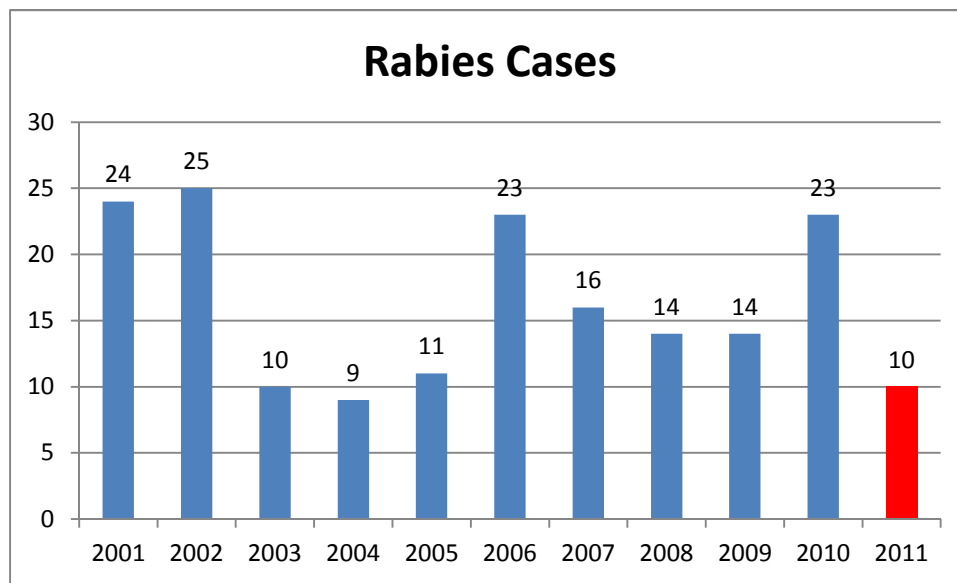
Intake: Animals admitted to the Animal Center. These include animals surrendered by the general public, picked up by Animal Control and animals born at the Center.

Adoption: Includes animals adopted to new homes and transferred to qualifying rescue groups.

Reclaim: Animals reclaimed by their owners after being found as strays or after completing quarantine period.

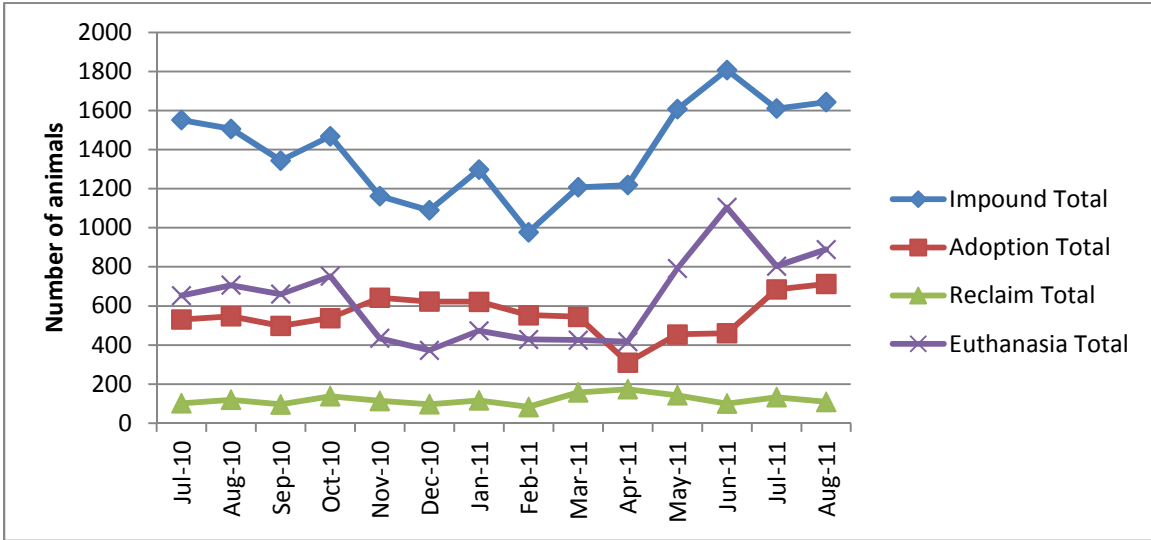
Euthanasia: Animals humanely euthanized at the Center. This includes animals that reside at the Animal Center and animals surrendered by their owner for euthanasia for medical or behavioral reasons.

Rabies: Positive confirmed laboratory cases



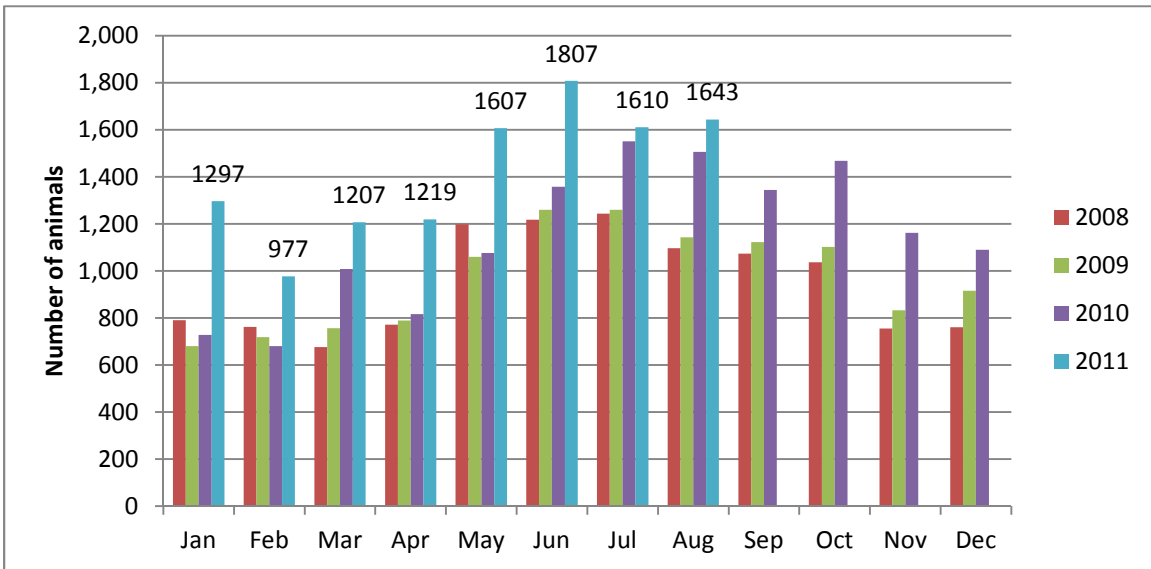
n=0 in the month of August 2011; year to date cases=10.

Animal Center Statistical Summary



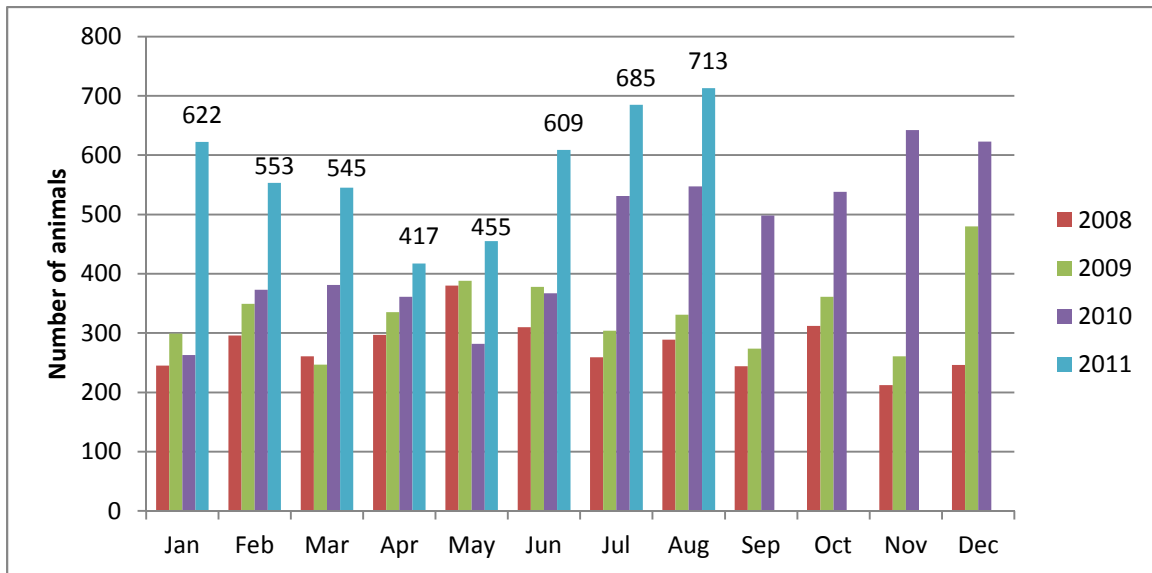
Ebb and Flow of animal intake: As depicted above, animal intake increases significantly in the warm months and drops in the cold months. This is typically associated with an increase in puppy and kitten litters in warm months. Adoptions do not normally increase to match the increase in intake so euthanasia rates can increase with intake.

Animal Center Intake monthly comparison



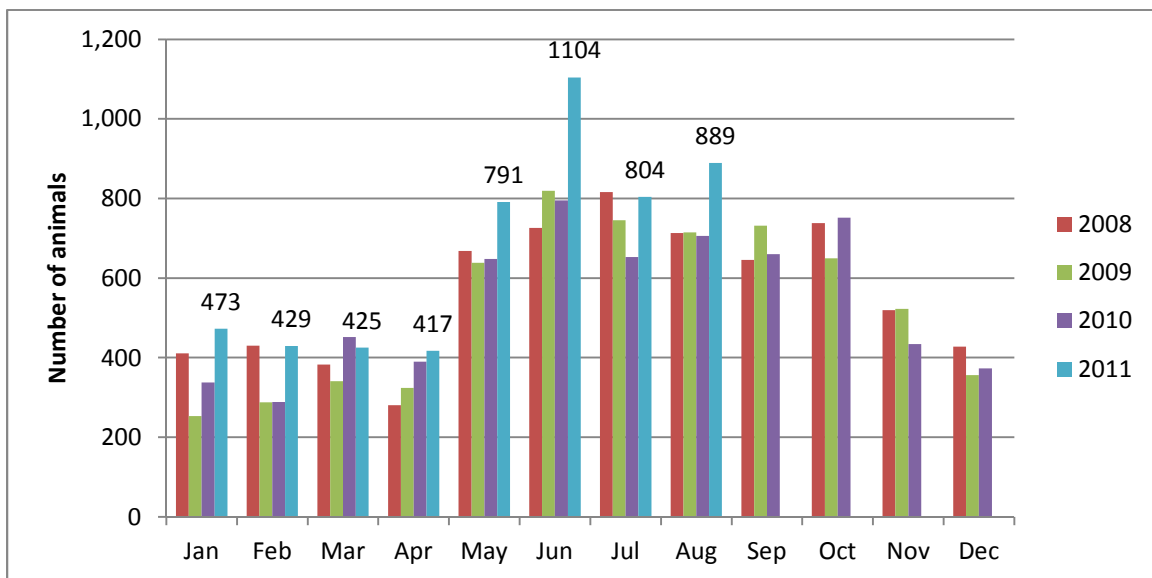
n=1,643; Intake is 9% higher than August 2010.

Adoption/Transfer Monthly Comparison



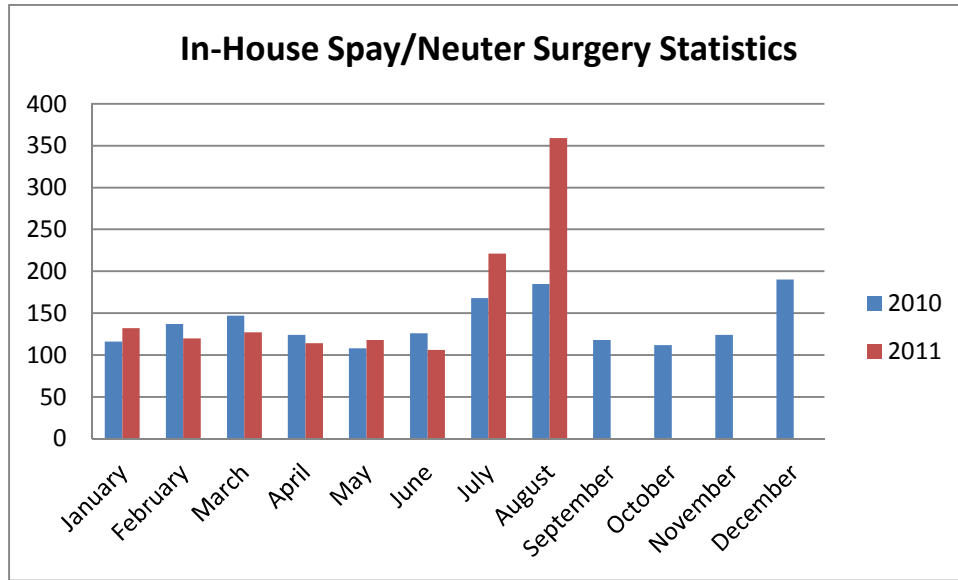
n=713; data represents a combination of typical adoptions to new families and transfers to partner rescue groups; 30% increase in adoptions over August last year.

Euthanasia monthly comparison



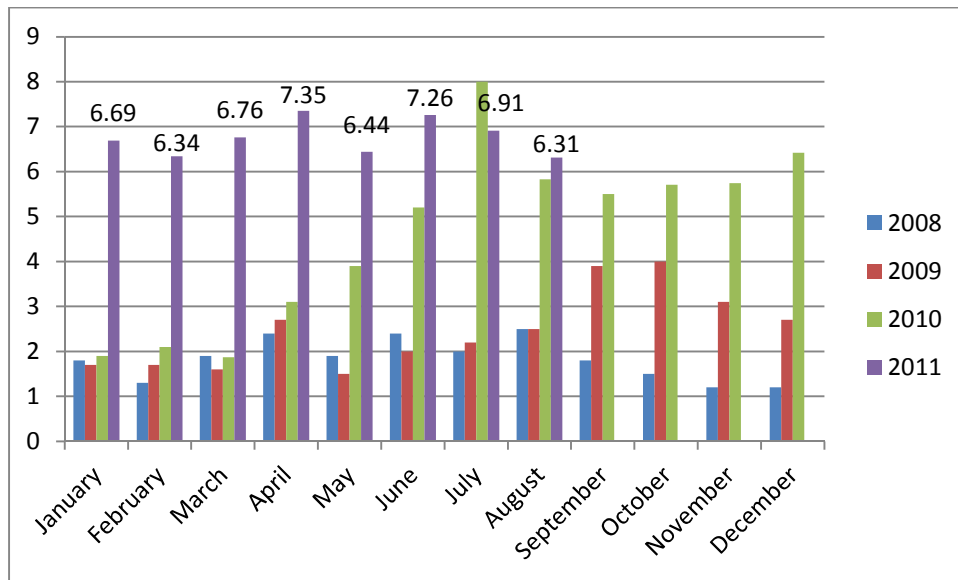
n=889.

Spay/Neuter Surgeries monthly comparison



n=359 spay/neuter surgeries; Three hundred and fifty-nine (359) spay or neuter surgeries were performed during the month of August by the Center’s in-house veterinary program. The surgery counts reflect only those surgeries performed in the Center, not those performed by third-party clinics in the community (SNAP, Saving Lives, Safe Care Feline Clinic).

Volunteer hours by FTE



n=6.31 FTEs; Volunteers logged enough hours this month to equal 6.31 extra full time employees. This includes dog walking, socialization, off-site events and work promoting animals in the community, just to name a few.

**Wake County Animal Center
Statistical Report**

Date Range: August 1-31, 2011

Date Prepared:

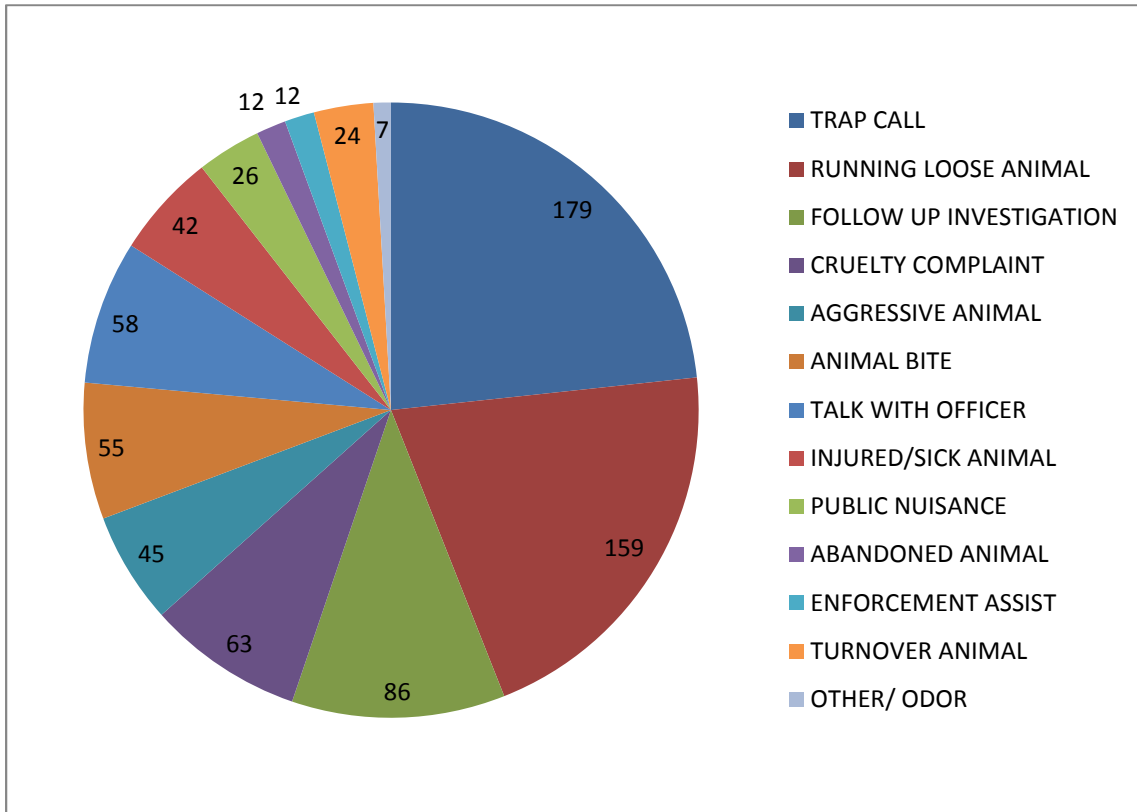
9/1/2011

	YTD FY09	Percent	YTD FY10	Percent	YTD FY11	Percent	YTD FY12	Percent	MTD	Percent
Intake Dog	1067		1035		1343		1547		782	
Intake Cat	1195		1286		1564		1545		778	
Intake Other	78		53		130		156		83	
Intake Total	2340		2374		3037		3248		1643	
Adoption Dog	300	28%	309	30%	515	38%	634	40.98%	298	38.11%
Adoption Cat	121	10%	139	11%	253	16%	395	25.57%	215	27.63%
Adoption Other	14	18%	19	36%	19	15%	17	10.90%	4	4.82%
Adoption Total	435	19%	467	20%	787	26%	1046	32.20%	517	31.47%
Transfer Dog	81	8%	137	13%	127	9%	193	12.48%	122	15.60%
Transfer Cat	14	1%	27	2%	149	10%	147	9.51%	63	8.10%
Transfer Other	15	19%	7	13%	19	15%	12	7.69%	11	13.25%
Transfer Total	110	5%	171	7%	295	10%	352	10.84%	196	11.93%
Reclaim Dog	120	11%	114	11%	187	14%	219	14.16%	98	12.53%
Reclaim Cat	15	1%	18	1%	32	2%	22	1.42%	11	1.41%
Reclaim Other	2	3%	0	0%	4	3%	1	0.64%	0	0.00%
Reclaim Total	137	6%	132	6%	223	7%	242	7.45%	109	6.63%
Euth Dog	472	44%	413	40%	378	28%	597	38.59%	327	41.82%
Euth Cat	1035	87%	1039	81%	981	63%	1013	65.57%	512	65.81%
Euth Other	28	36%	18	34%	62	48%	83	53.21%	50	60.24%
Euth Total	1535	66%	1470	62%	1421	47%	1693	52.12%	889	54.11%

	Total #	Percentage
Change in intake from FY11 to FY12	211	7%
Change in adoptions from FY11 to FY12	259	33%
Change in transfers from FY11 to FY12	57	19%
Change in euthanasia from FY11 to FY12	272	19%
Change in total cat live releases	130	30%
Change in cat live release percentage		9%
Change in total dog live releases	217	26%
Change in dog live release percentage		6%

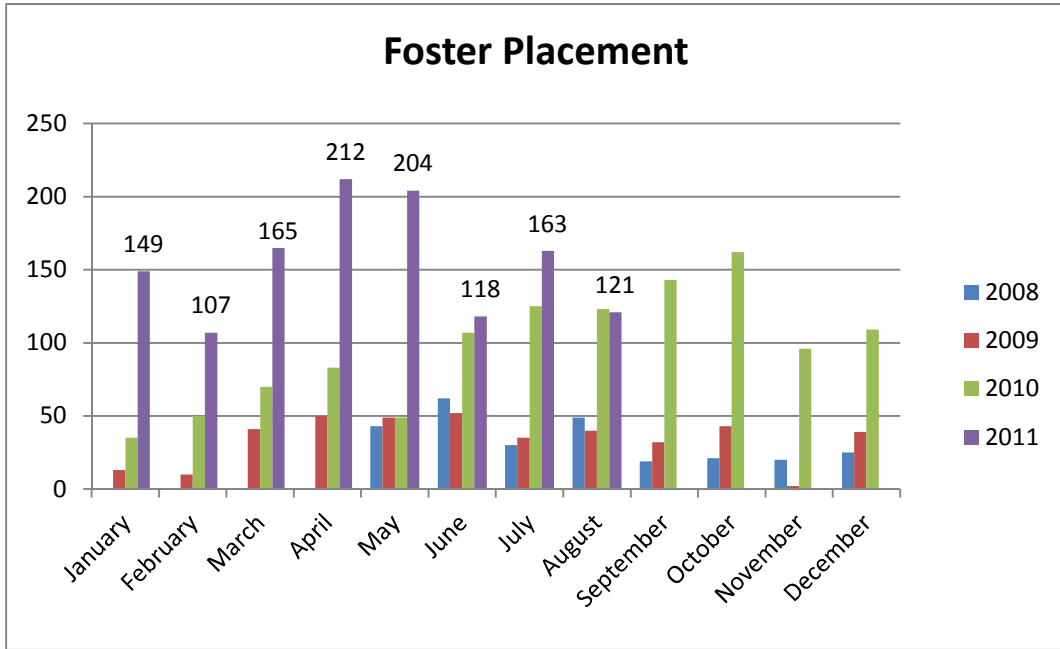
NOTE: A decrease in total numbers or percentage will show a (-) symbol and be in red. Increases will be in blue and will not show a (+) symbol. NOTE: The first three columns show three different fiscal years, using the date range indicated on the top left corner of the report. Each month, we will compare the same date range across the current and past three fiscal years for equal comparison.

Animal Control Field Data



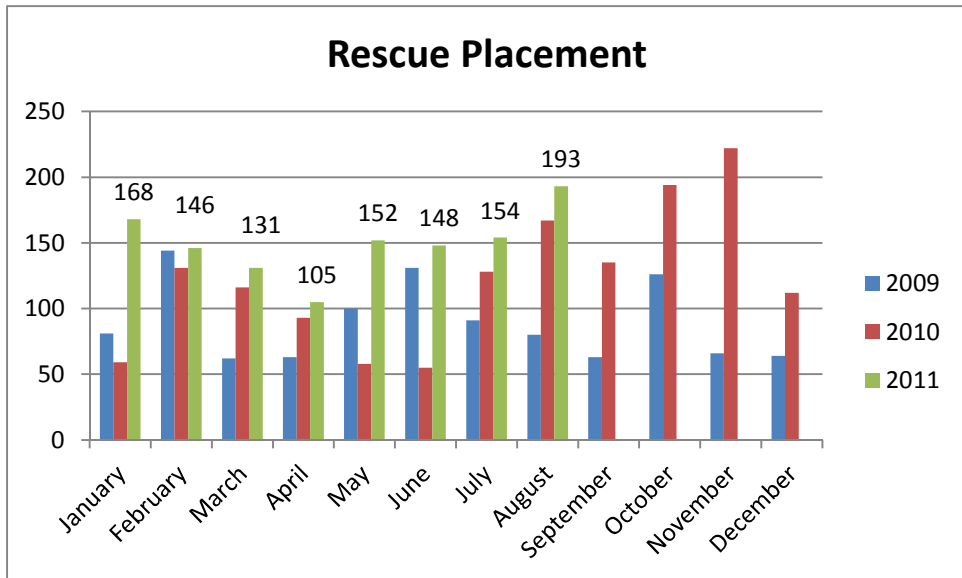
n=785; Wake County Animal Control responded to 785 requests for service in August 2011. Complaints for stray or loose animals continues to contribute to about half of all calls.

Year over year comparison: Foster Placement



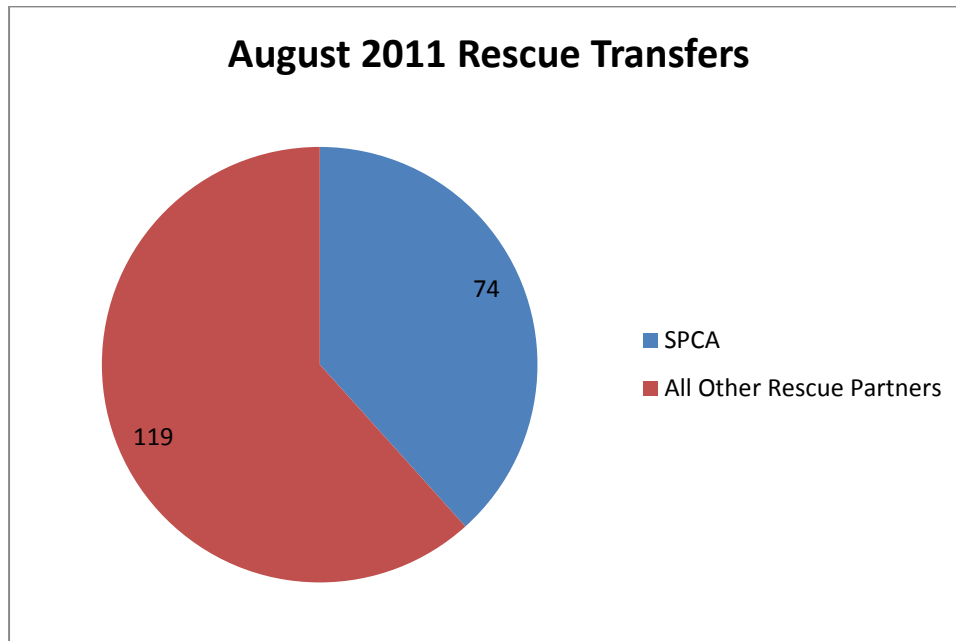
n=121; During the month of August, one hundred twenty-one (121) animals were placed into foster care.

Year over year comparison: Rescue Placement



n=193; Rescue placement is 15% higher than this month last year. During the month of August, one hundred ninety-three (193) animals were placed into the care of partnering rescue groups and adoption centers.

Distribution of Rescue Placement



N=193; WCAC transferred 74 animals to the SPCA of Wake County and 119 animals to our other rescue partners. The total transfer out number includes 62 felines, 121 canines, 9 reptiles, and 1 rabbit.

Top Canine and Feline Transfers

August 2011	Canine
Faulkner Animal Rescue and Recovery	20
Camp Canines	18
SPCA of Wake County	18
Hav-A-Hart Pet Rescue	15
Paw Prints Animal Rescue	7
NC Rottweiler Rescue	6
German Shepherd Rescue and Adoptions	5
Sound Pet Animal Rescue and Referral	4
All Breed Animal Rescue of the Carolinas	3

August 2011	Feline
SPCA of Wake County	55
Safe Haven for Cats	2
Sound Pet Animal Rescue and Referral	1