



## Definitions

*Intake:* Animals admitted to the Animal Center. These include animals surrendered by the general public, picked up by Animal Control and animals born at the Center.

*Adoption:* Includes animals adopted to new homes and transferred to qualifying rescue groups.

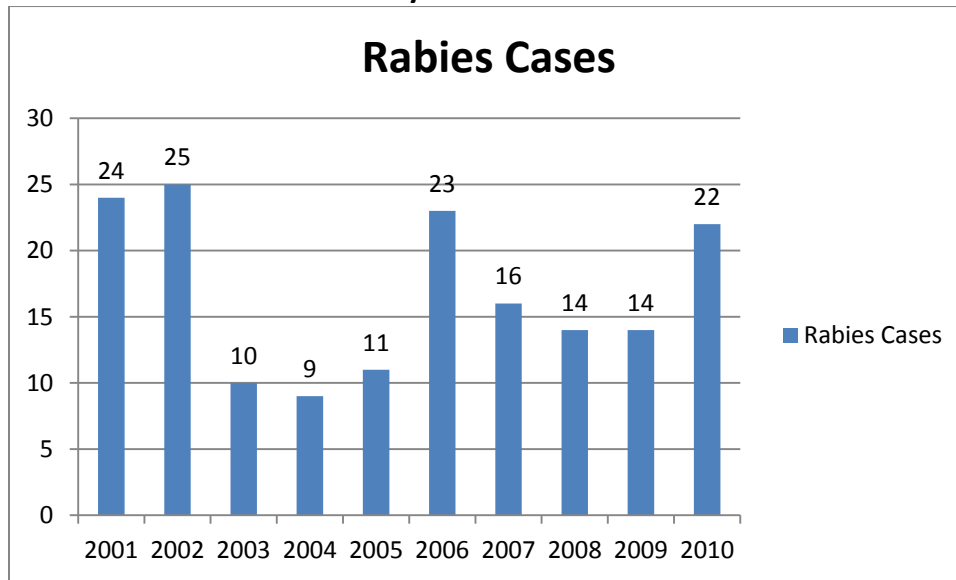
*Reclaim:* Animals reclaimed by their owners after being found as strays or after completing quarantine period.

*Euthanasia:* Animals humanely euthanized at the Center. This includes animals that reside at the Animal Center and animals surrendered by their owner for euthanasia for medical or behavioral reasons.

## Animal Center News

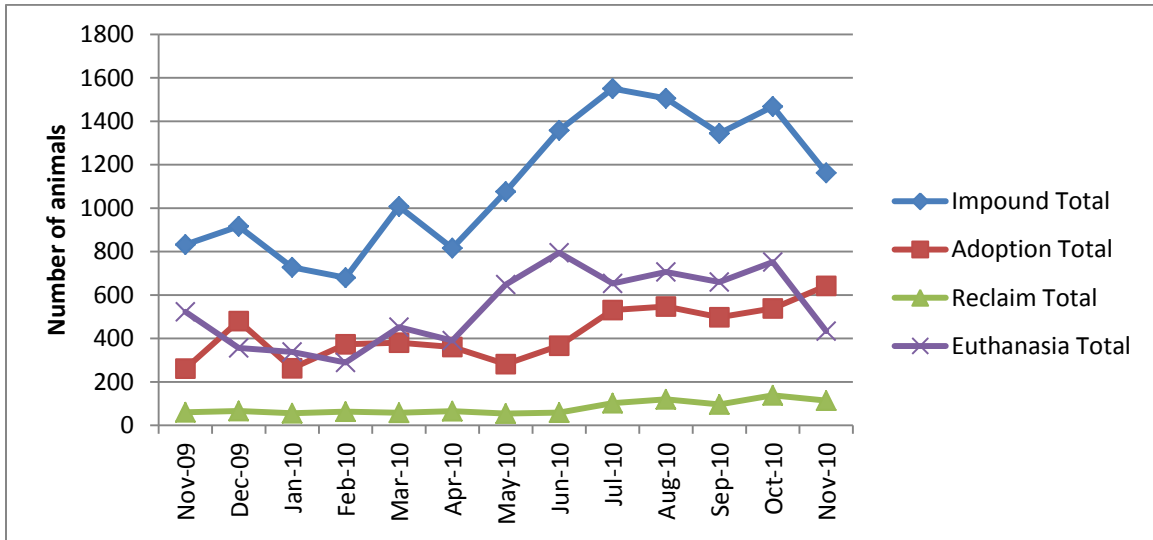
November was a BIG success! An adoption special on “Black Friday” and a continuation of a rescue group discount program lead to the best month statistically ever!

### Rabies: Positive confirmed laboratory cases



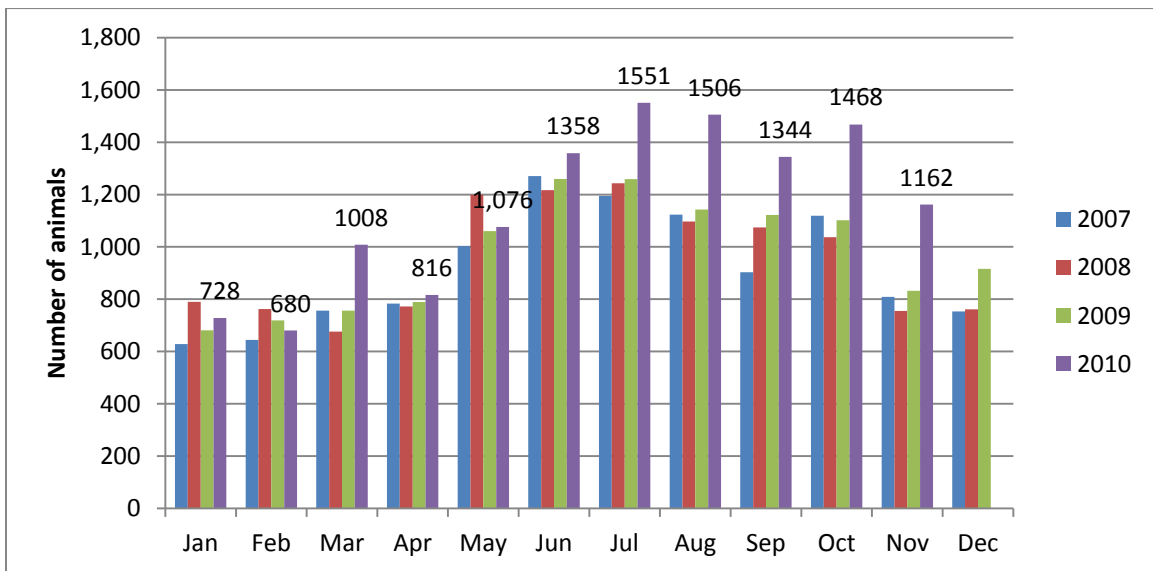
n=0 November 2010; year to date cases=22; As compared to the last few years, we are on track to have an above average year in Wake County for positive rabies cases. Wake County averages 15.8 laboratory confirmed cases each year; since 2001, raccoon tests account for 56% of all species that test positive in Wake County; rabies is enzootic (present in wildlife) in all NC counties

## Animal Center Statistical Summary



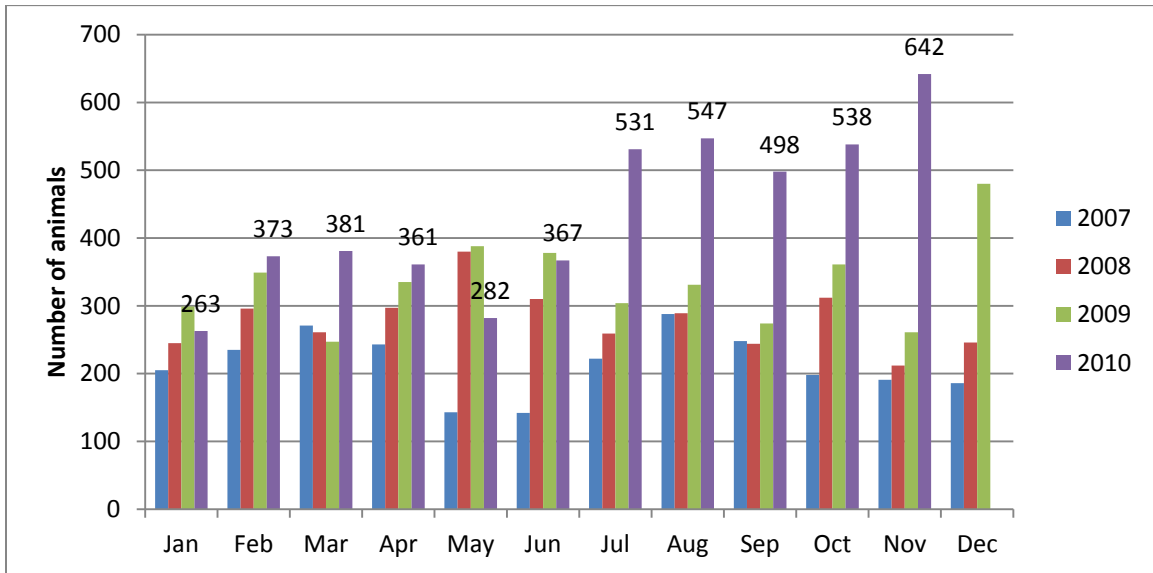
**Ebb and Flow of animal intake:** As depicted above, animal intake increases significantly in the warm months and drops in the cold months. This is typically associated with an increase in puppy and kitten litters in warm months. Adoptions do not normally increase to match the increase in intake so euthanasia rates can increase with intake.

## Animal Center Intake monthly comparison



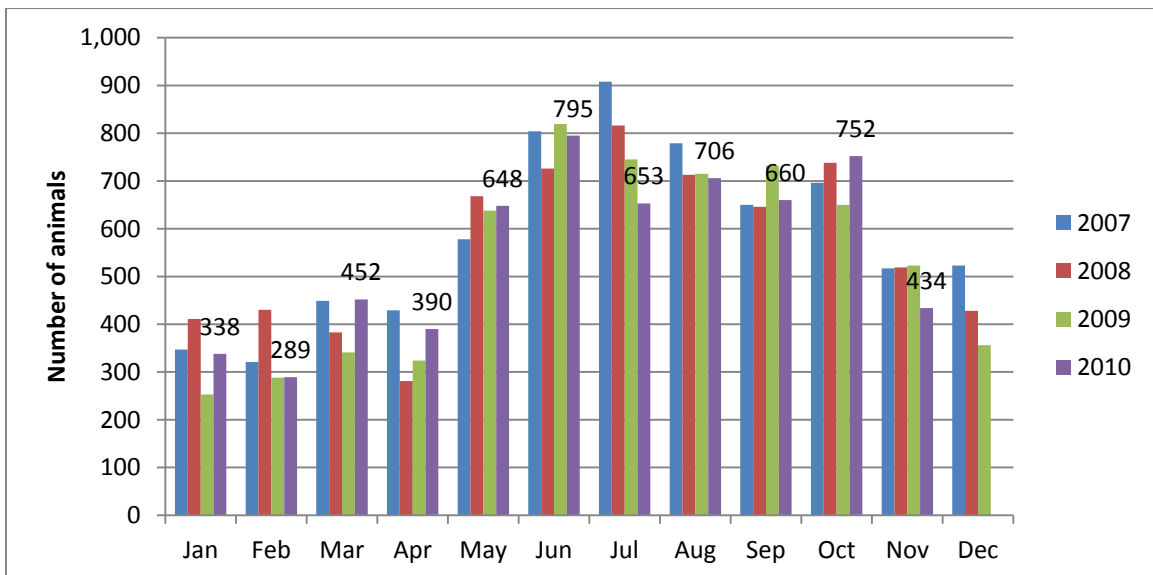
*n=1162; Intake is 40% higher than November 2009. This fiscal year, the Animal Center became the sole intake facility in the County. We are currently experiencing a 29% increase for the fiscal year.*

### Adoption/Transfer Monthly Comparison



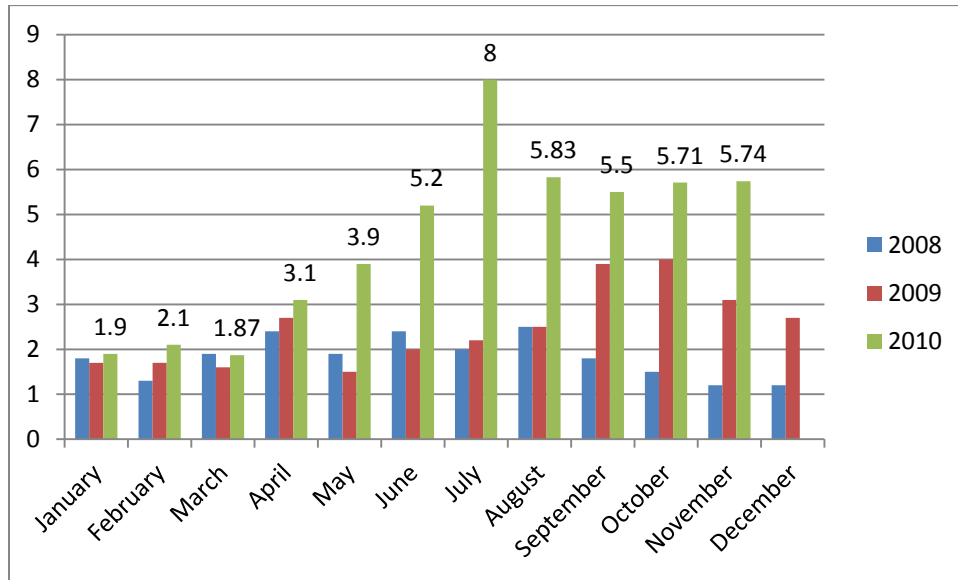
*n=642; data represents a combination of typical adoptions to new families and transfers to partner rescue groups; 249% increase in adoptions over November 2009 and an all-time record for the Wake County Animal Center. This is tremendous and we are very proud of the support we have received from the citizens of Wake County!*

### Euthanasia monthly comparison



*n=434; the euthanasia numbers are 22.5% lower than this month last year.*

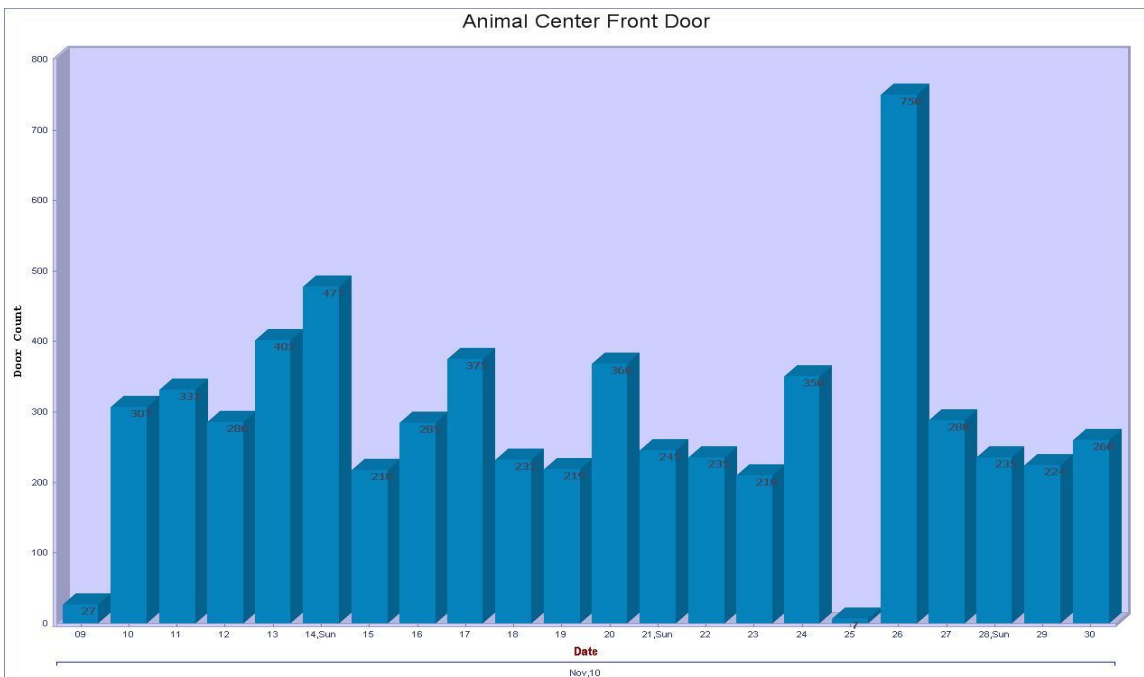
## Volunteer hours by FTE



*n=5.74 FTEs; Volunteers logged enough hours this month to equal 5.71 extra full time employees. This includes dog walking, socialization, off-site events and work promoting animals in the community, just to name a few.*

## Front Door Counter

This month, we installed a door counter that tracks the number of visitors to the Animal Center each day. Below is a graphical representation of this daily data.



**Wake County Animal Center  
Statistical Report**

**Date Range: July 1-November 30**

**Date Prepared:**

**12/1/2010**

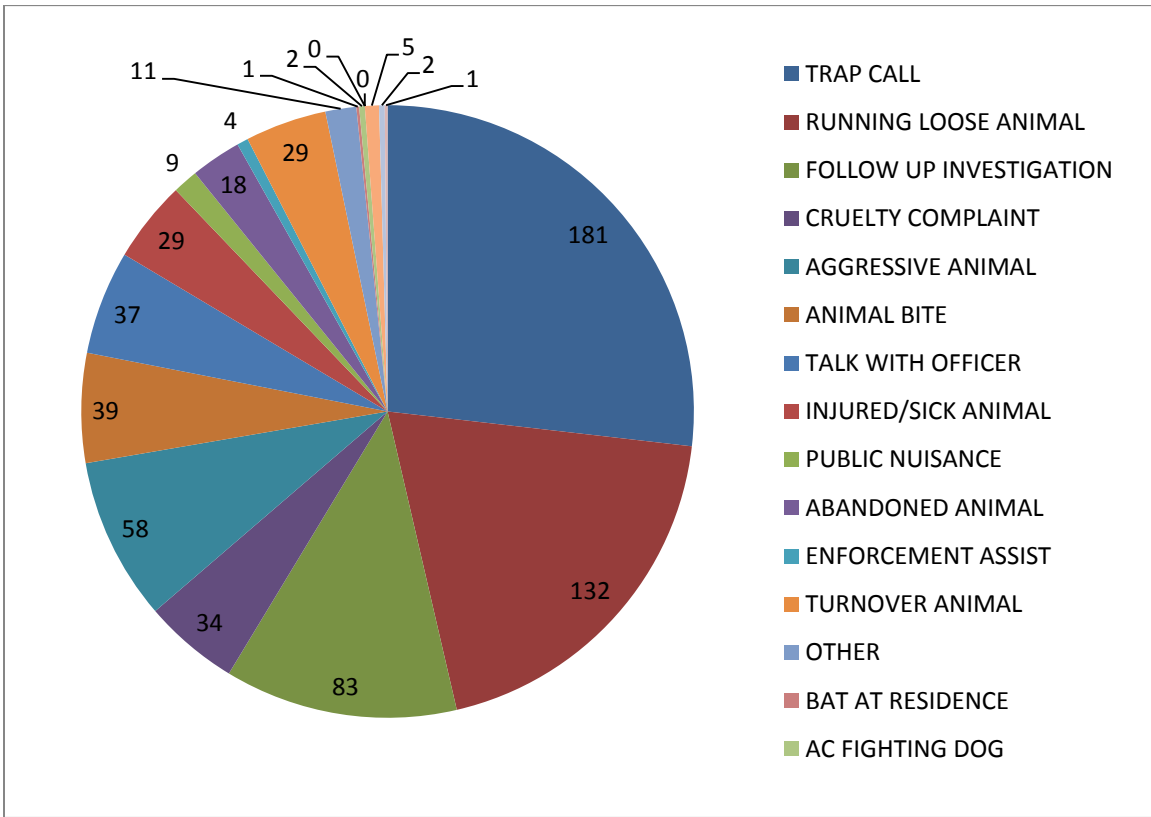
	<b>YTD FY09</b>	<b>Percent</b>	<b>YTD FY10</b>	<b>Percent</b>	<b>YTD FY11</b>	<b>Percent</b>	<b>Nov-10</b>	<b>Percent</b>
Intake Dog	2311		2363		3146		591	
Intake Cat	2768		2936		3585		542	
Intake Other	127		123		262		29	
<b>Intake Total</b>	<b>5206</b>		<b>5422</b>		<b>6993</b>		<b>1162</b>	
Adoption Dog	756	33%	731	31%	1168	37.13%	263	44.50%
Adoption Cat	293	11%	328	11%	682	19.02%	150	27.68%
Adoption Other	27	21%	45	37%	61	23.28%	6	20.69%
<b>Adoption Total</b>	<b>1076</b>	<b>21%</b>	<b>1104</b>	<b>20%</b>	<b>1911</b>	<b>27.33%</b>	<b>419</b>	<b>36.06%</b>
Transfer Dog	176	8%	346	15%	415	13.19%	108	18.27%
Transfer Cat	31	1%	65	2%	385	10.74%	110	20.30%
Transfer Other	34	27%	16	13%	47	17.94%	5	17.24%
<b>Transfer Total</b>	<b>241</b>	<b>5%</b>	<b>427</b>	<b>8%</b>	<b>847</b>	<b>12.11%</b>	<b>223</b>	<b>19.19%</b>
Reclaim Dog	267	12%	293	12%	504	16.02%	104	17.60%
Reclaim Cat	37	1%	33	1%	63	1.76%	10	1.85%
Reclaim Other	2	2%	3	2%	5	1.91%	0	0.00%
<b>Reclaim Total</b>	<b>306</b>	<b>6%</b>	<b>329</b>	<b>6%</b>	<b>572</b>	<b>8.18%</b>	<b>114</b>	<b>9.81%</b>
Euth Dog	1010	44%	916	39%	831	26.41%	111	18.78%
Euth Cat	2376	86%	2431	83%	2322	64.77%	314	57.93%
Euth Other	46	36%	23	19%	103	39.31%	9	31.03%
<b>Euth Total</b>	<b>3432</b>	<b>66%</b>	<b>3370</b>	<b>62%</b>	<b>3256</b>	<b>46.56%</b>	<b>434</b>	<b>37.35%</b>

	<b>Total #</b>	<b>Percentage</b>
Change in intake from FY10 to FY11	1571	29%
Change in adoptions from FY10 to FY11	807	73%
Change in transfers from FY10 to FY11	420	98%
Change in euthanasia from FY10 to FY11	-114	-3%
Change in total cat live releases	704	165%
Change in cat live release percentage		17%
Change in total dog live releases	717	52%
Change in dog live release percentage		8%

**NOTE: A decrease in total numbers or percentage will show a (-) symbol and be in red. Increases will be in blue and will not show a (+) symbol.**

**NOTE: The first three columns show three different fiscal years, using the date range indicated on the top left corner of the report. Each month, we will compare the same date range across the current and past two fiscal years for equal comparison.**

## Animal Control Field Data

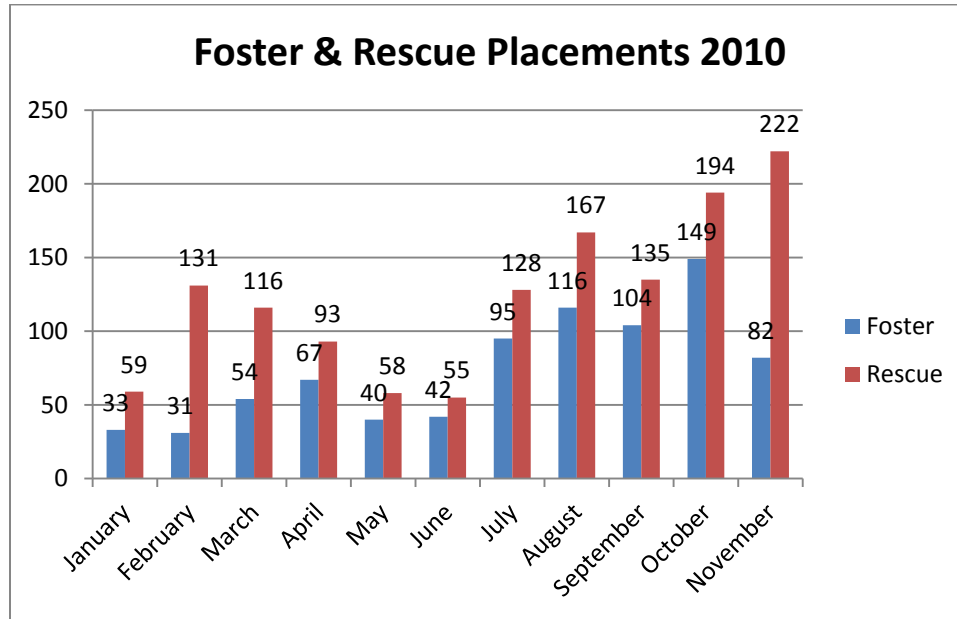


Wake County Animal Control responded to 675 requests for service in November 2010. Normally, Animal Control sees a decrease in requests for service when the temperatures decrease. Very few litters are born in the winter, reducing the amount of animals in the community. Complaints for stray or loose animals continues to contribute to about half of all calls.

## Foster and Rescue Report

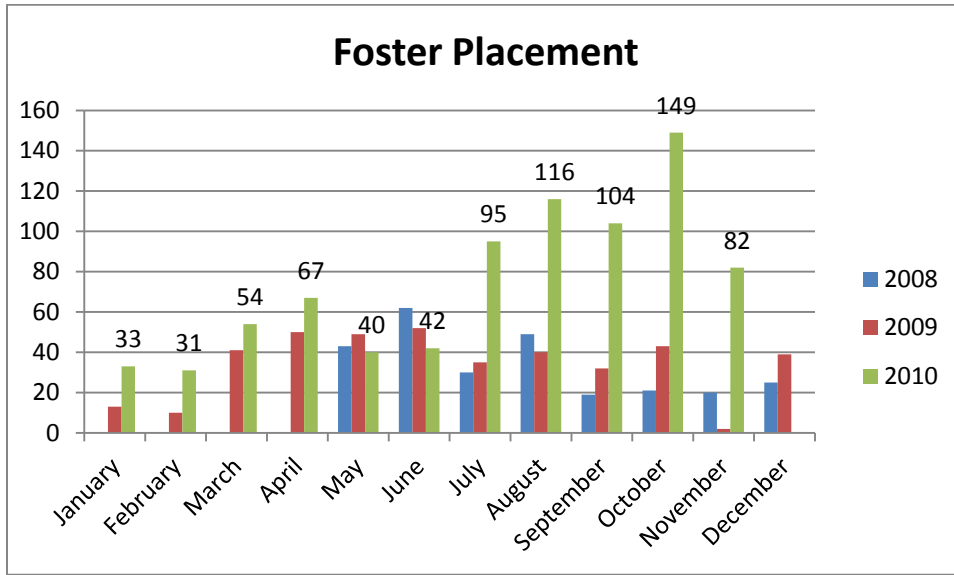
During the month of November, eighty-two (82) animals were placed into foster care.

During the month of November, two hundred twenty-two (222) animals were placed into the care of partnering rescue groups and shelters.



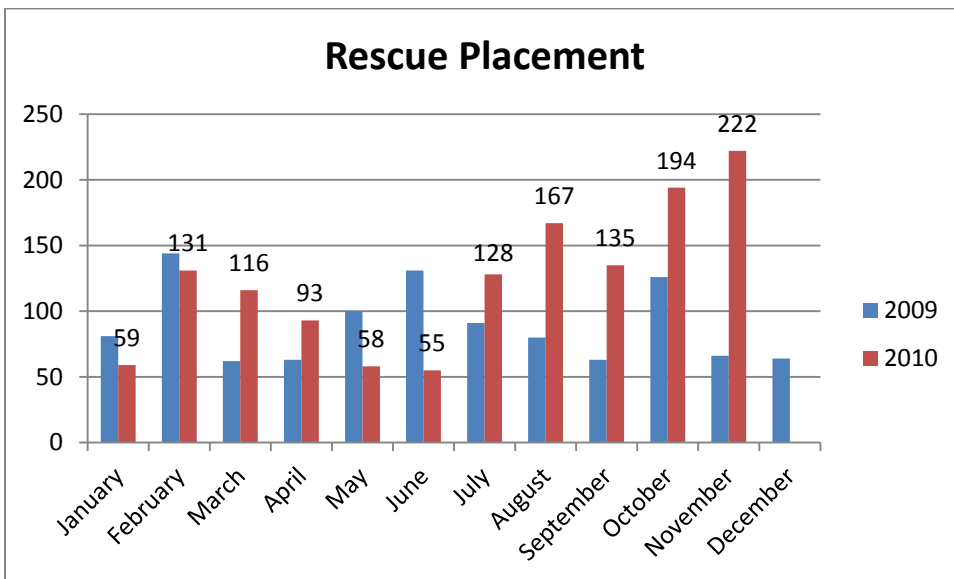
*n=82 foster, 222 rescue; We set a single month record in November for placing animals into rescue.*

**Year over year comparison: Foster Placement**



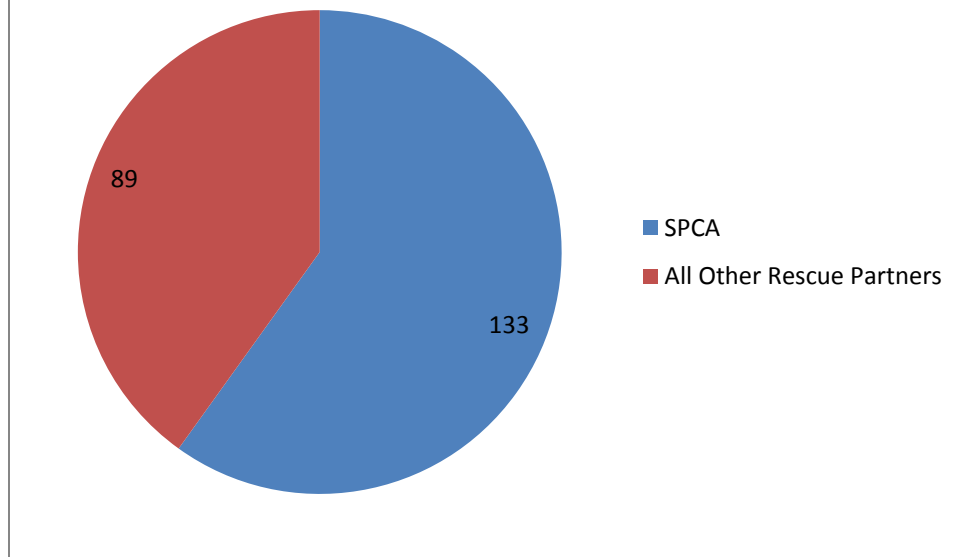
*n=82; Due to the reduced number of kittens and puppies that arrive to the Center, the total number of animals placed into foster care during November is less than the preceding months. The number of animals placed into foster care during November of 2010, far exceeds the previous two Novembers.*

**Year over year comparison: Rescue Placement**



*n=222; November of 2010 is a record-breaking month for rescue placement.*

## November 2010 Rescue Transfers



*The SPCA of Wake County is our largest rescue partner, but we continue to have exceptional support from our rescue partners.*

### Top Canine and Feline Transfers

Shelter/Rescues	Dogs Transferred
SPCA of Wake County	62
Annabelle's Second Chance	8
Paw Prints Animal Rescue	6
Sound Pet Animal Rescue and Referral	4
All Breed Rescue of the Carolinas	3

Shelters/Rescues	Cats Transferred
SPCA of Wake County	70
SAFE Haven for Cats	13
Pet & People Foundation	5
Goathouse Refuge	4