



## Definitions

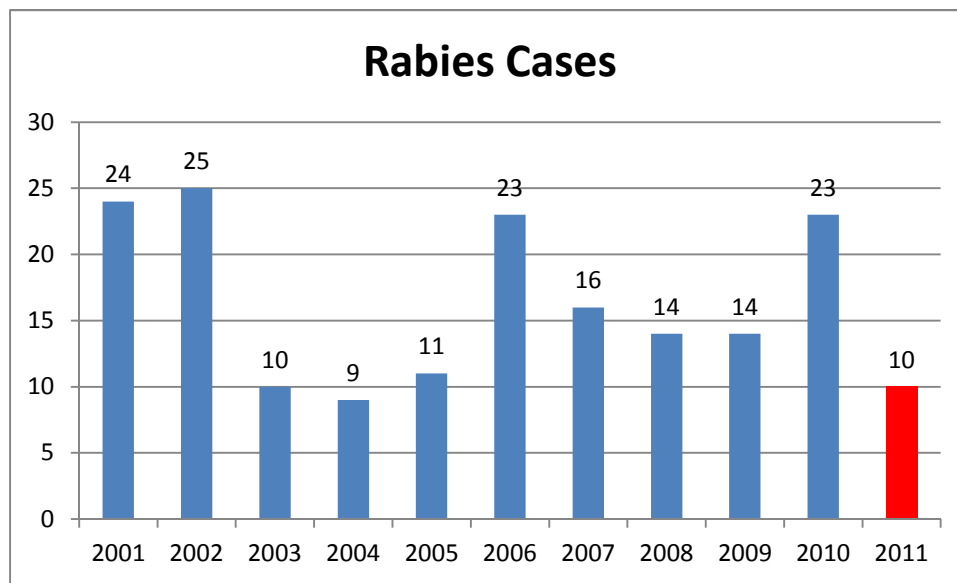
*Intake:* Animals admitted to the Animal Center. These include animals surrendered by the general public, picked up by Animal Control and animals born at the Center.

*Adoption:* Includes animals adopted to new homes and transferred to qualifying rescue groups.

*Reclaim:* Animals reclaimed by their owners after being found as strays or after completing quarantine period.

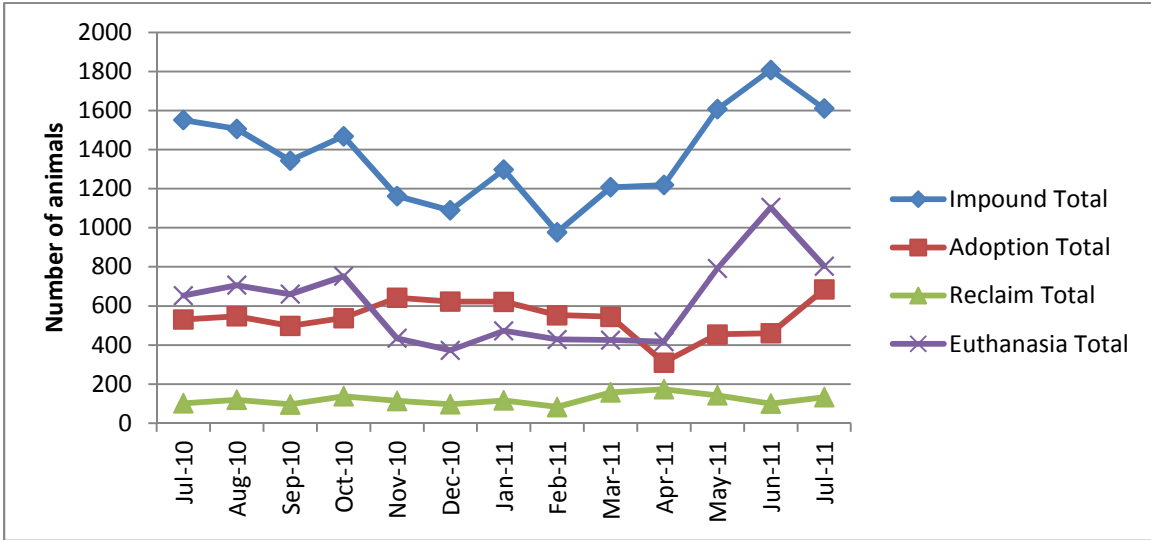
*Euthanasia:* Animals humanely euthanized at the Center. This includes animals that reside at the Animal Center and animals surrendered by their owner for euthanasia for medical or behavioral reasons.

## Rabies: Positive confirmed laboratory cases



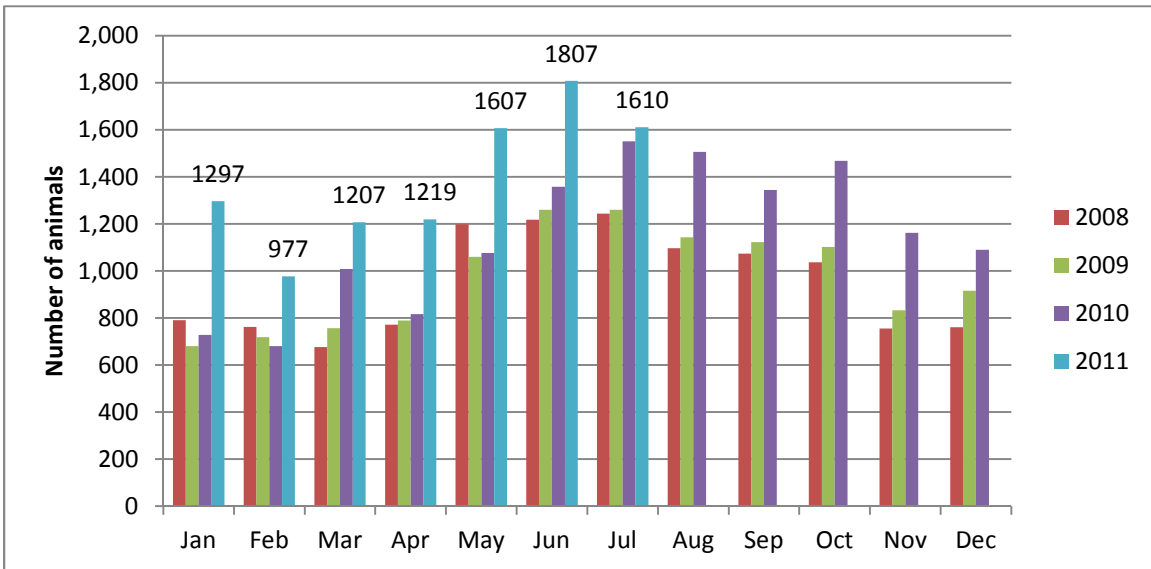
n=1 in the month of July 2011; year to date cases=10.

## Animal Center Statistical Summary



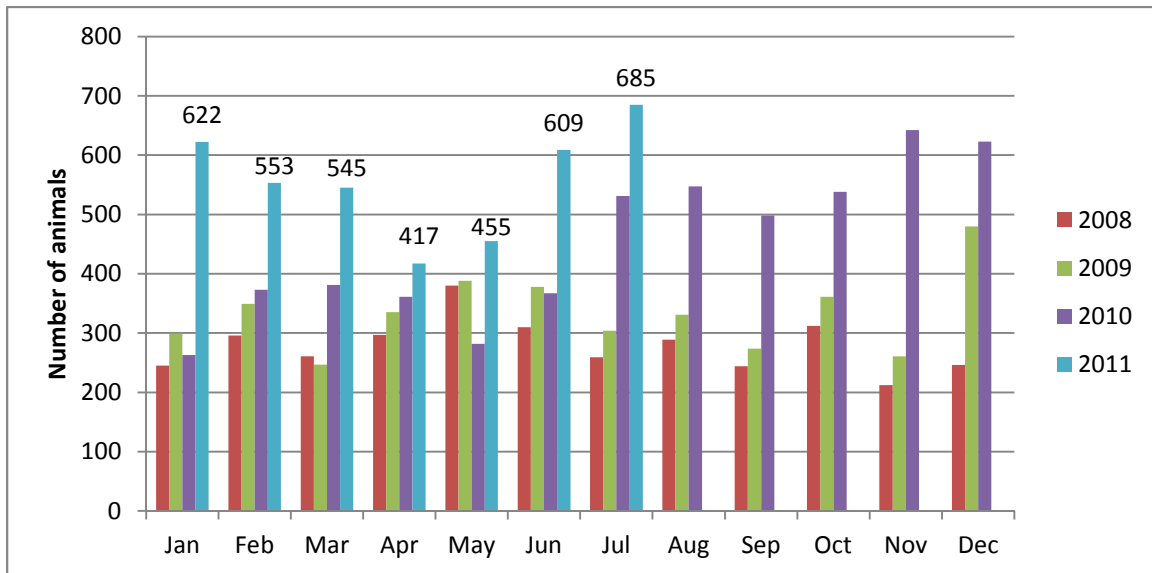
**Ebb and Flow of animal intake:** As depicted above, animal intake increases significantly in the warm months and drops in the cold months. This is typically associated with an increase in puppy and kitten litters in warm months. Adoptions do not normally increase to match the increase in intake so euthanasia rates can increase with intake.

## Animal Center Intake monthly comparison



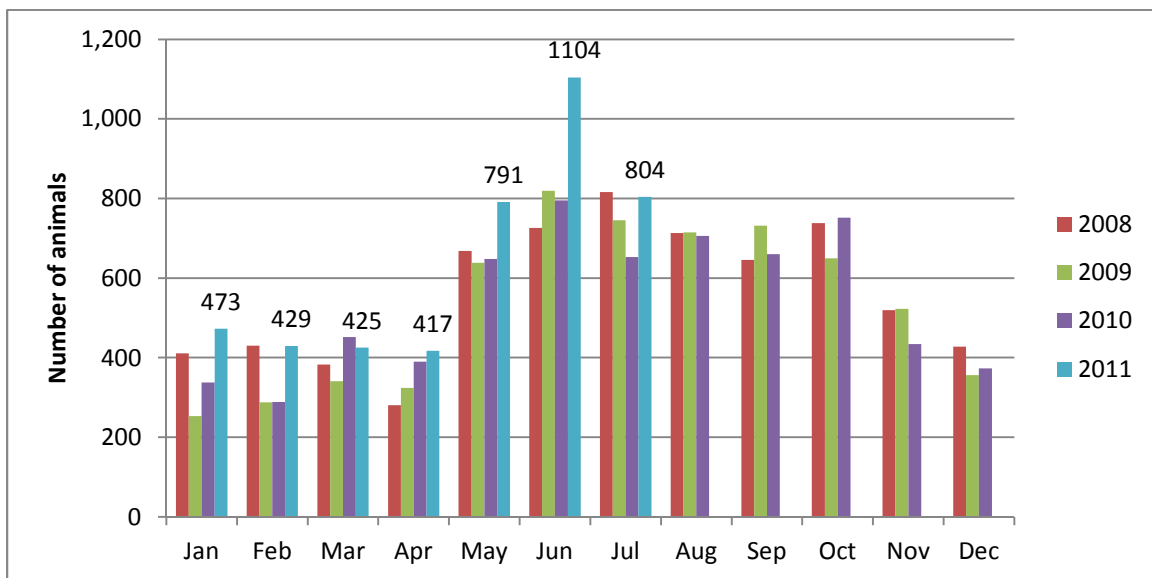
*n=1,610; Intake is 4% higher than July 2010.*

## Adoption/Transfer Monthly Comparison



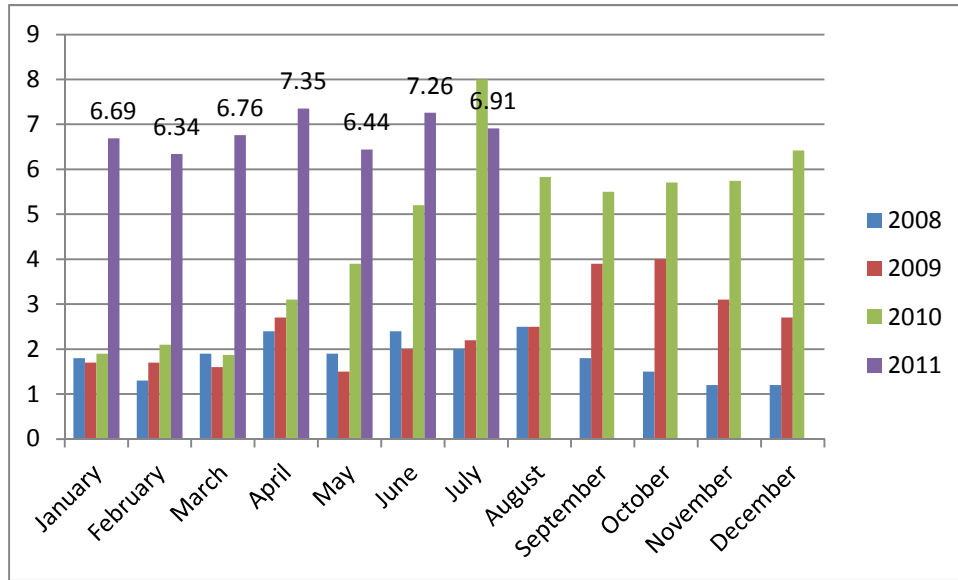
*n=685; data represents a combination of typical adoptions to new families and transfers to partner rescue groups; 29% increase in adoptions over July last year.*

## Euthanasia monthly comparison



*n=804.*

## Volunteer hours by FTE



*n=6.91 FTEs; Volunteers logged enough hours this month to equal 6.91 extra full time employees. This includes dog walking, socialization, off-site events and work promoting animals in the community, just to name a few.*

## Wake County Animal Center Statistical Report

**Date Range:** July 1 - July 31

**Date Prepared:**

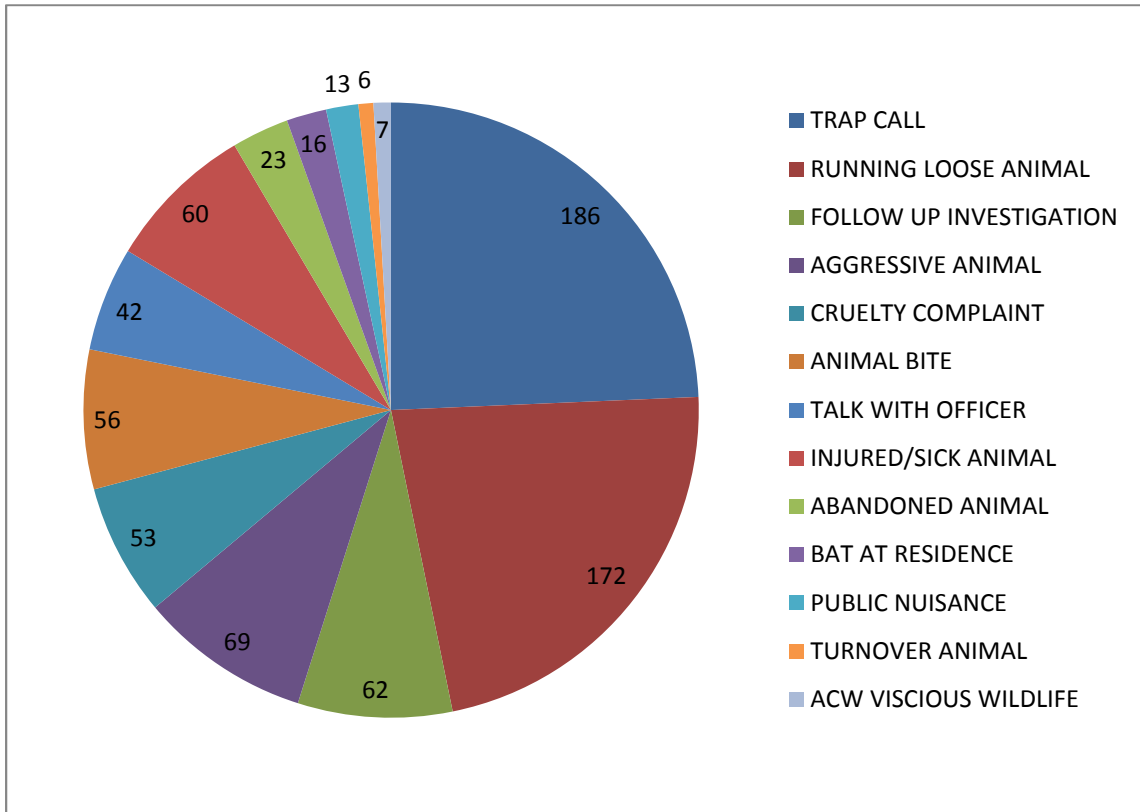
**8/1/2011**

	YTD FY09	Percent	YTD FY10	Percent	YTD FY11	Percent	YTD FY12	Percent	MTD	Percent
Intake Dog	610		511		677		765		765	
Intake Cat	590		707		797		769		769	
Intake Other	43		25		54		76		76	
<b>Intake Total</b>	<b>1243</b>		<b>1243</b>		<b>1528</b>		<b>1610</b>		<b>1610</b>	
Adoption Dog	149	24%	139	27%	267	39%	336	44%	336	44%
Adoption Cat	47	8%	64	9%	127	16%	180	23%	180	23%
Adoption Other	12	28%	11	44%	11	20%	13	17%	13	17%
<b>Adoption Total</b>	<b>208</b>	<b>17%</b>	<b>214</b>	<b>17%</b>	<b>405</b>	<b>27%</b>	<b>529</b>	<b>33%</b>	<b>529</b>	<b>33%</b>
Transfer Dog	35	6%	78	15%	69	10%	71	9%	71	9%
Transfer Cat	6	1%	11	2%	46	6%	84	11%	84	11%
Transfer Other	9	21%	2	8%	13	24%	1	1%	1	1%
<b>Transfer Total</b>	<b>50</b>	<b>4%</b>	<b>91</b>	<b>7%</b>	<b>128</b>	<b>8%</b>	<b>156</b>	<b>10%</b>	<b>156</b>	<b>10%</b>
Reclaim Dog	62	10%	50	10%	90	13%	121	16%	121	16%
Reclaim Cat	8	1%	12	2%	13	2%	11	1%	11	1%
Reclaim Other	0	0%	0	0%	0	0%	1	1%	1	1%
<b>Reclaim Total</b>	<b>70</b>	<b>6%</b>	<b>62</b>	<b>5%</b>	<b>103</b>	<b>7%</b>	<b>133</b>	<b>8%</b>	<b>133</b>	<b>8%</b>
Euth Dog	278	46%	184	36%	170	25%	270	35%	270	35%
Euth Cat	527	89%	561	79%	482	60%	501	65%	501	65%
Euth Other	14	33%	6	24%	30	56%	33	43%	33	43%
<b>Euth Total</b>	<b>819</b>	<b>66%</b>	<b>751</b>	<b>60%</b>	<b>682</b>	<b>45%</b>	<b>804</b>	<b>50%</b>	<b>804</b>	<b>50%</b>

	Total #	Percentage
Change in intake from FY11 to FY12	82	5%
Change in adoptions from FY11 to FY12	124	31%
Change in transfers from FY11 to FY12	28	22%
Change in euthanasia from FY11 to FY12	122	18%
Change in total cat live releases	89	48%
Change in cat live release percentage		12%
Change in total dog live releases	102	24%
Change in dog live release percentage		6%

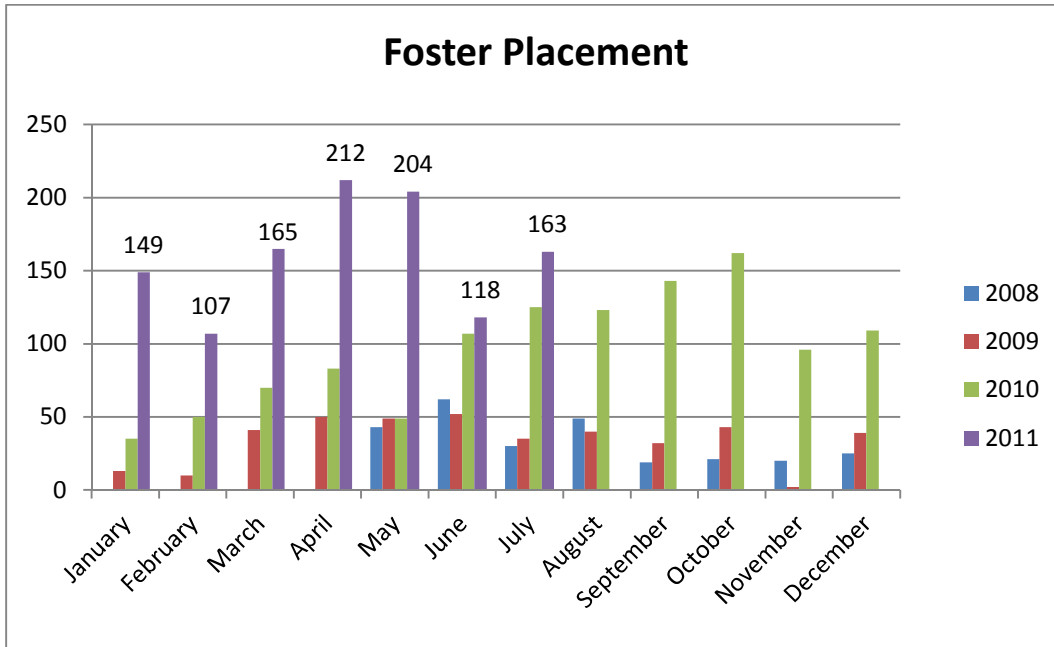
**NOTE: A decrease in total numbers or percentage will show a (-) symbol and be in red. Increases will be in blue and will not show a (+) symbol. NOTE: The first three columns show three different fiscal years, using the date range indicated on the top left corner of the report. Each month, we will compare the same date range across the current and past three fiscal years for equal comparison.**

### Animal Control Field Data



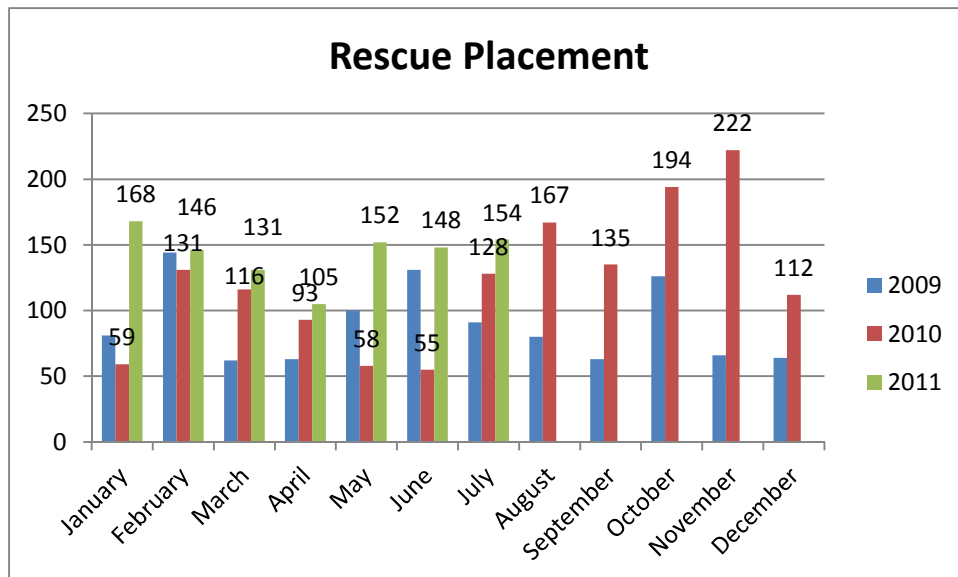
*n=782; Wake County Animal Control responded to 782 requests for service in July 2011. Complaints for stray or loose animals continues to contribute to about half of all calls.*

**Year over year comparison: Foster Placement**



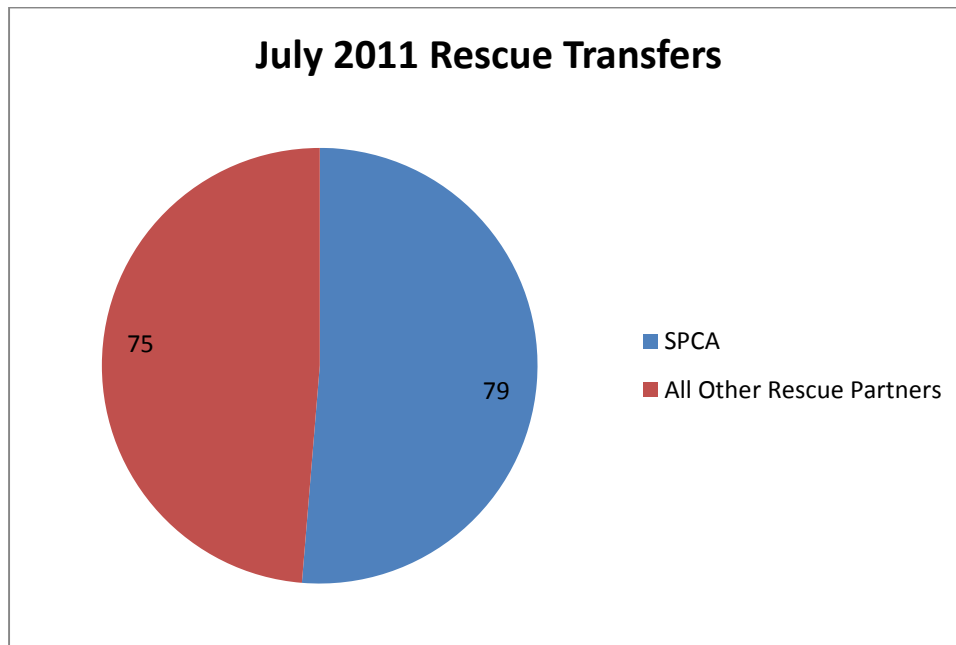
*n=163; During the month of July, one hundred sixty-three (163) animals were placed into foster care.*

**Year over year comparison: Rescue Placement**



*n=154; Rescue placement is 20% higher than this month last year. During the month of July, one hundred fifty-four (154) animals were placed into the care of partnering rescue groups and adoption centers.*

## Distribution of Rescue Placement



*N=154; WCAC transferred 79 canines and felines to the SPCA of Wake County in the month of July.*

## Top Canine and Feline Transfers

July 2011	Canine
Faulkner Animal Rescue and Recovery	11
SPCA of Wake County	8
Road Home Rescue	7
Paw Prints Animal Rescue	5
Hav-A-Hart Pet Rescue	5
Saving Grace Animals for Adoption	4
Neuse River Golden Retriever Rescue	4
Camp Canines	4

July 2011	Feline
SPCA of Wake County	71
Faulkner Animal Rescue and Recovery	2
Hav-A-Hart Pet Rescue	1