

Definitions

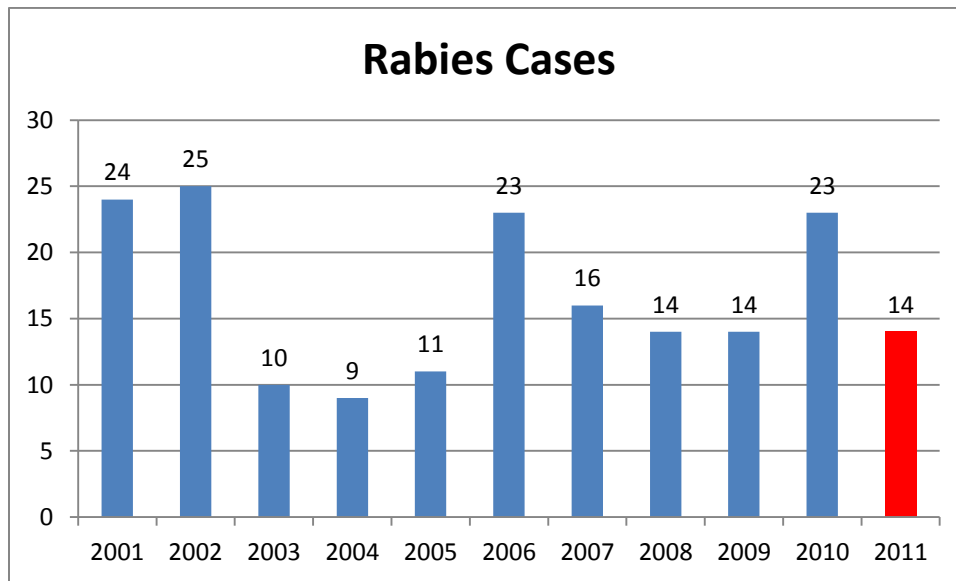
Intake: Animals admitted to the Animal Center. These include animals surrendered by the general public, picked up by Animal Control and animals born at the Center.

Adoption: Includes animals adopted to new homes and transferred to qualifying rescue groups.

Reclaim: Animals reclaimed by their owners after being found as strays or after completing quarantine period.

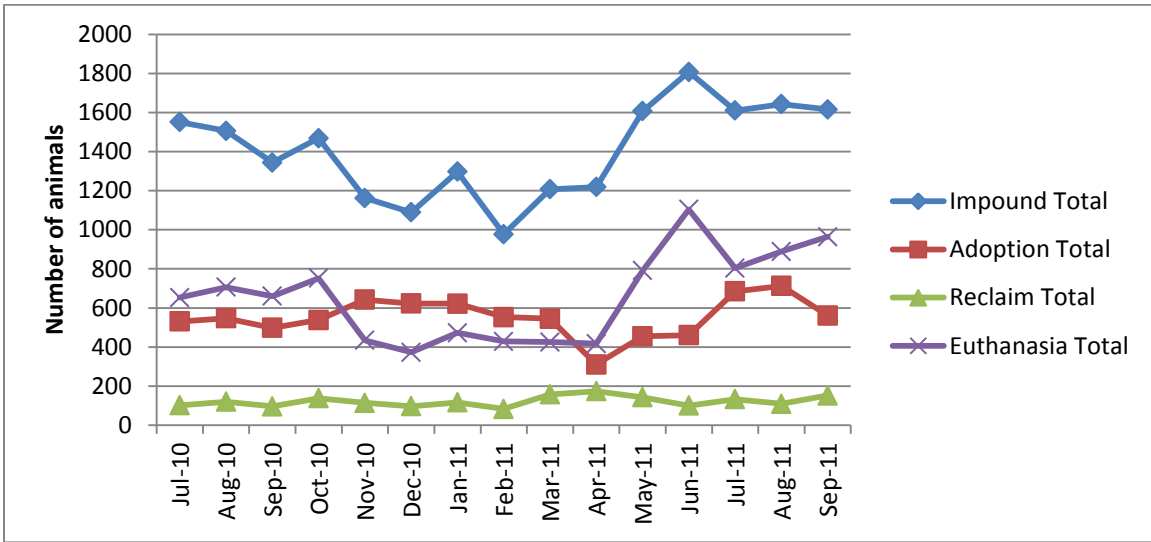
Euthanasia: Animals humanely euthanized at the Center. This includes animals that reside at the Animal Center and animals surrendered by their owner for euthanasia for medical or behavioral reasons.

Rabies: Positive confirmed laboratory cases



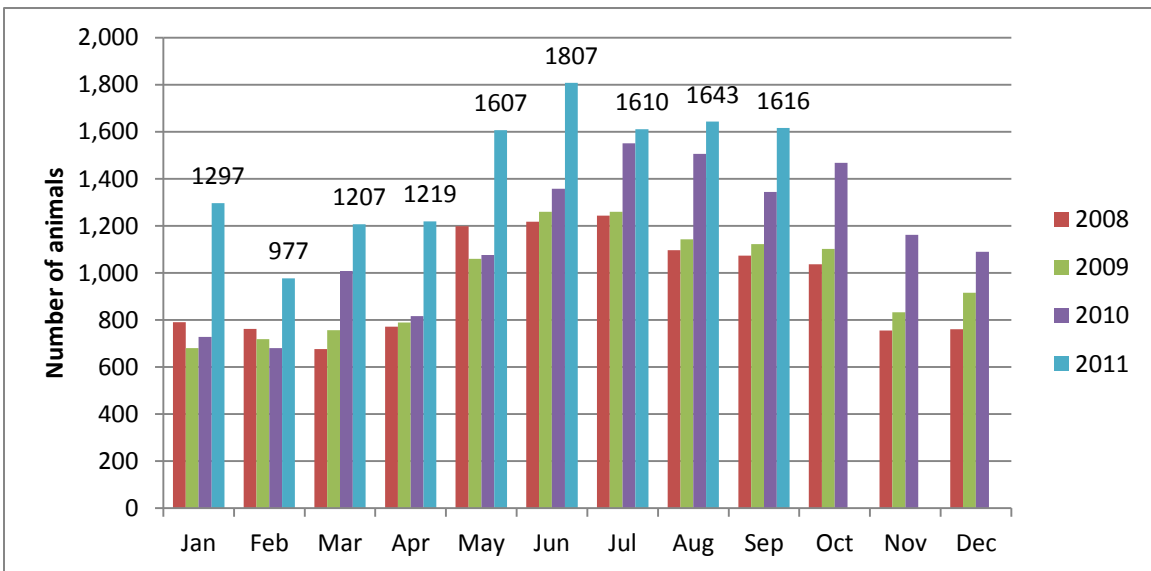
n=4 in the month of September 2011; year to date cases=14.

Animal Center Statistical Summary



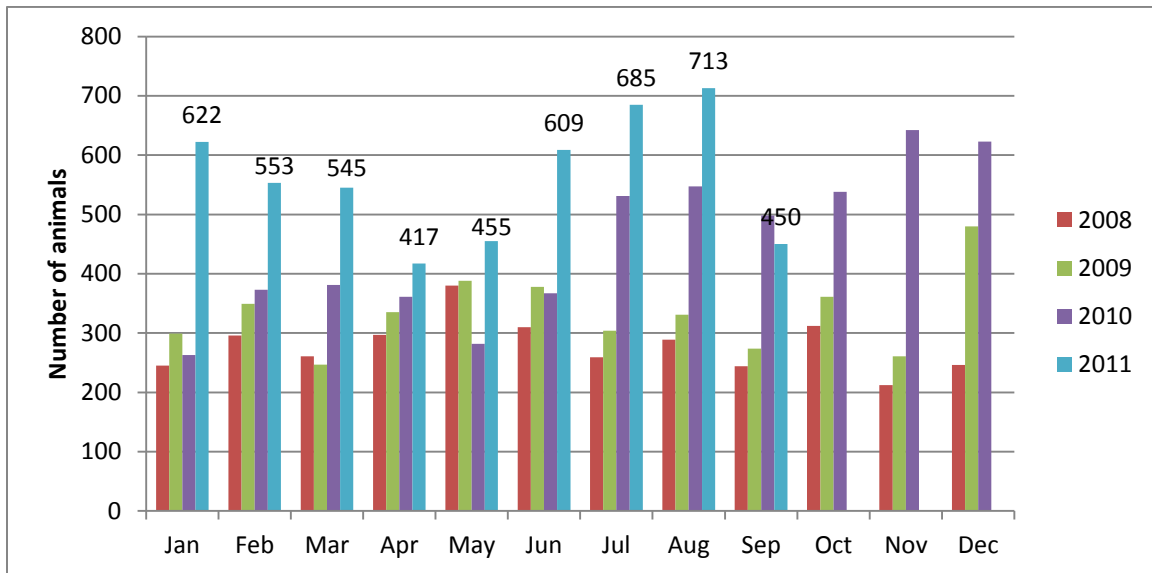
Ebb and Flow of animal intake: As depicted above, animal intake increases significantly in the warm months and drops in the cold months. This is typically associated with an increase in puppy and kitten litters in warm months. Adoptions do not normally increase to match the increase in intake so euthanasia rates can increase with intake.

Animal Center Intake monthly comparison



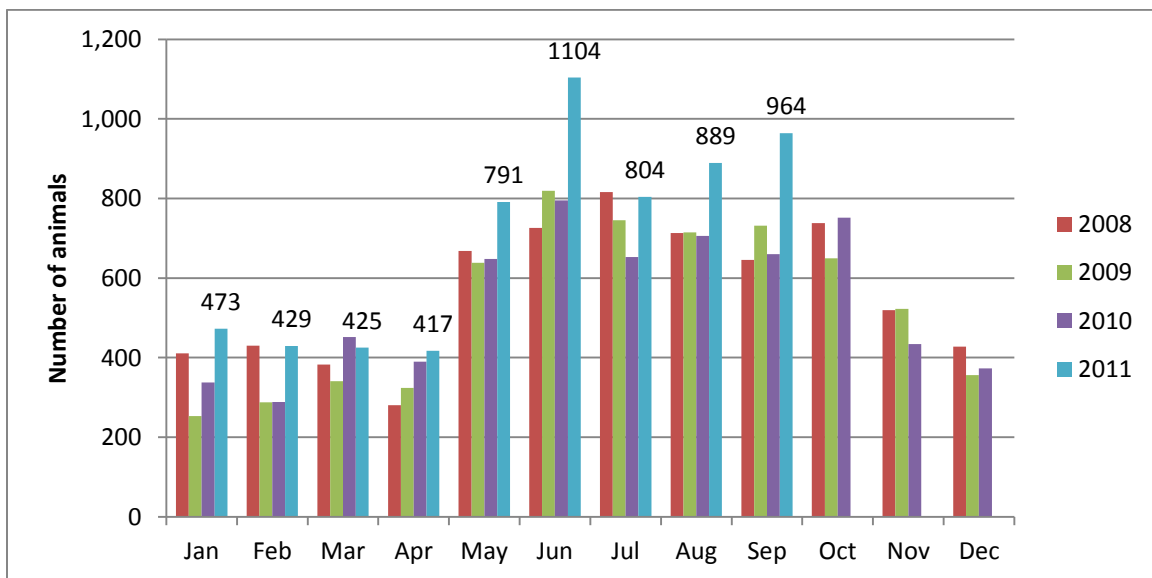
$n=1,616$; Intake is 20% higher than September 2010.

Adoption/Transfer Monthly Comparison



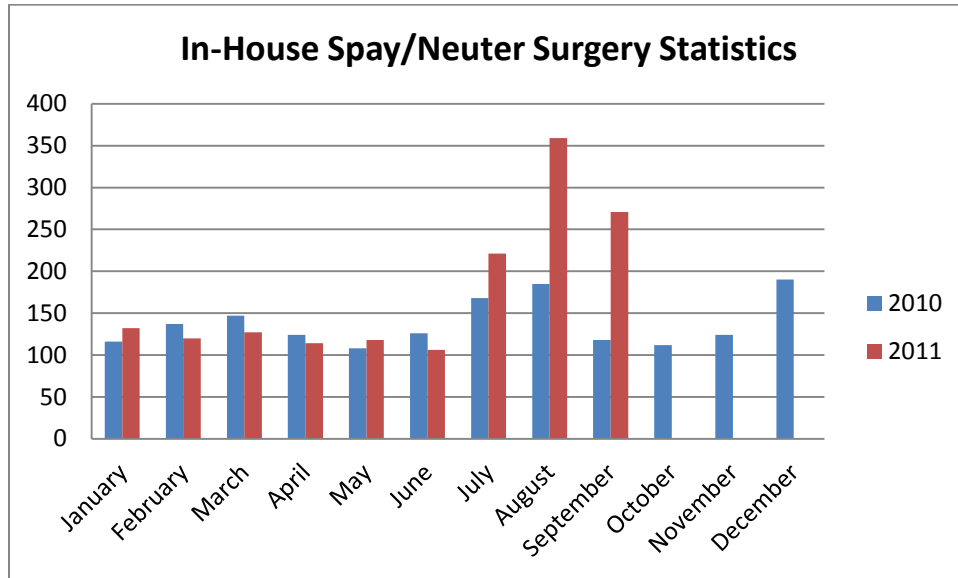
n=450; data represents a combination of typical adoptions to new families and transfers to partner rescue groups; 10.7% decrease in adoptions over September last year.

Euthanasia monthly comparison



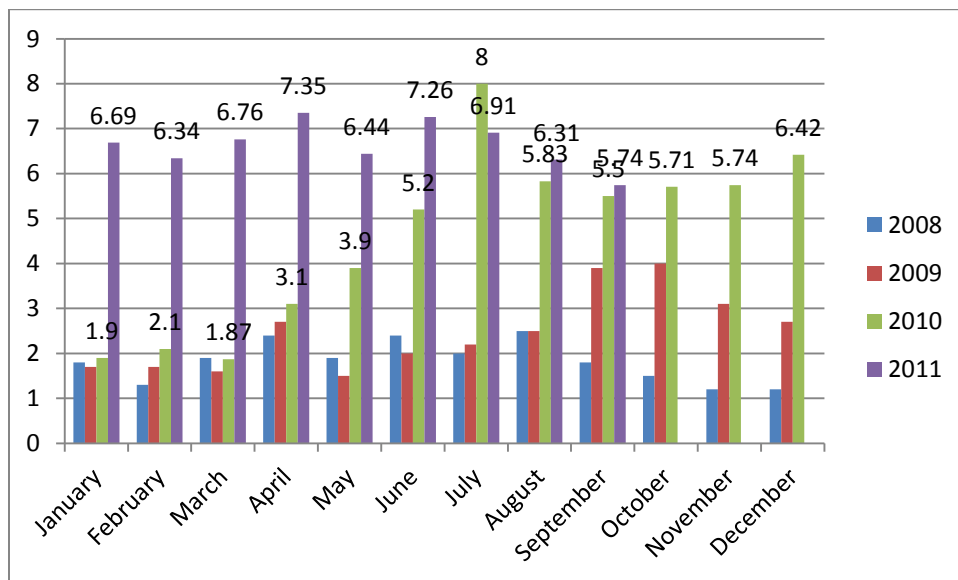
n=964.

Spay/Neuter Surgeries monthly comparison



N=271 spay/neuter surgeries; Two hundred and seventy-one (271) spay or neuter surgeries were performed during the month of September by the Center's in-house veterinary program. The surgery counts reflect only those surgeries performed in the Center, not those performed by third-party clinics in the community (SNAP, Saving Lives, Safe Care Feline Clinic).

Volunteer hours by FTE



n=5.74 FTEs; Volunteers logged enough hours this month to equal 5.74 extra full time employees. This includes dog walking, socialization, off-site events and work promoting animals in the community, just to name a few.

Wake County Animal Center Statistical Report

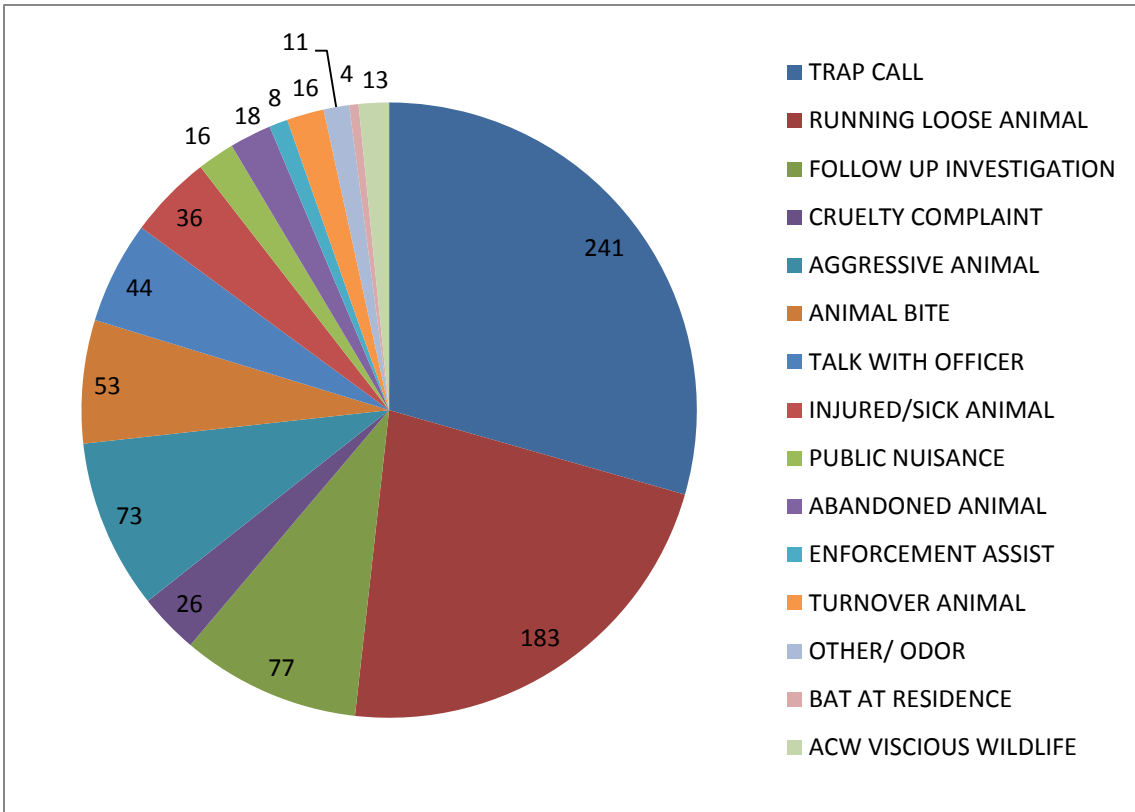
Date Range: September 1-30, 2011 **Date Prepared:** 9/30/2011

	YTD FY09	Percent	YTD FY10	Percent	YTD FY11	Percent	YTD FY12	Percent	MTD	Percent
Intake Dog	1534		1918		1918		2247		704	
Intake Cat	1797		2276		2276		2369		826	
Intake Other	82		174		174		242		86	
Intake Total	3413		4368		4368		4858		1616	
Adoption Dog	441	29%	708	37%	708	37%	865	38.50%	231	32.81%
Adoption Cat	176	10%	398	17%	398	17%	499	21.06%	104	12.59%
Adoption Other	15	18%	44	25%	44	25%	49	20.25%	32	37.21%
Adoption Total	632	19%	1150	26%	1150	26%	1413	29.09%	367	22.71%
Transfer Dog	114	7%	199	10%	199	10%	249	11.08%	56	7.95%
Transfer Cat	19	1%	205	9%	205	9%	169	7.13%	22	2.66%
Transfer Other	15	18%	26	15%	26	15%	17	7.02%	5	5.81%
Transfer Total	148	4%	430	10%	430	10%	435	8.95%	83	5.14%
Reclaim Dog	170	11%	279	15%	279	15%	352	15.67%	133	18.89%
Reclaim Cat	21	1%	36	2%	36	2%	38	1.60%	16	1.94%
Reclaim Other	2	2%	4	2%	4	2%	4	1.65%	3	3.49%
Reclaim Total	193	6%	319	7%	319	7%	394	8.11%	152	9.41%
Euth Dog	661	43%	544	28%	544	28%	878	39.07%	281	39.91%
Euth Cat	1486	83%	1474	65%	1474	65%	1662	70.16%	650	78.69%
Euth Other	36	44%	83	48%	83	48%	116	47.93%	33	38.37%
Euth Total	2183	64%	2101	48%	2101	48%	2656	54.67%	964	59.65%

	Total #	Percentage
Change in intake from FY11 to FY12	490	11%
Change in adoptions from FY11 to FY12	263	23%
Change in transfers from FY11 to FY12	5	1%
Change in euthanasia from FY11 to FY12	555	26%
Change in total cat live releases	67	10%
Change in cat live release percentage		2%
Change in total dog live releases	280	24%
Change in dog live release percentage		3%

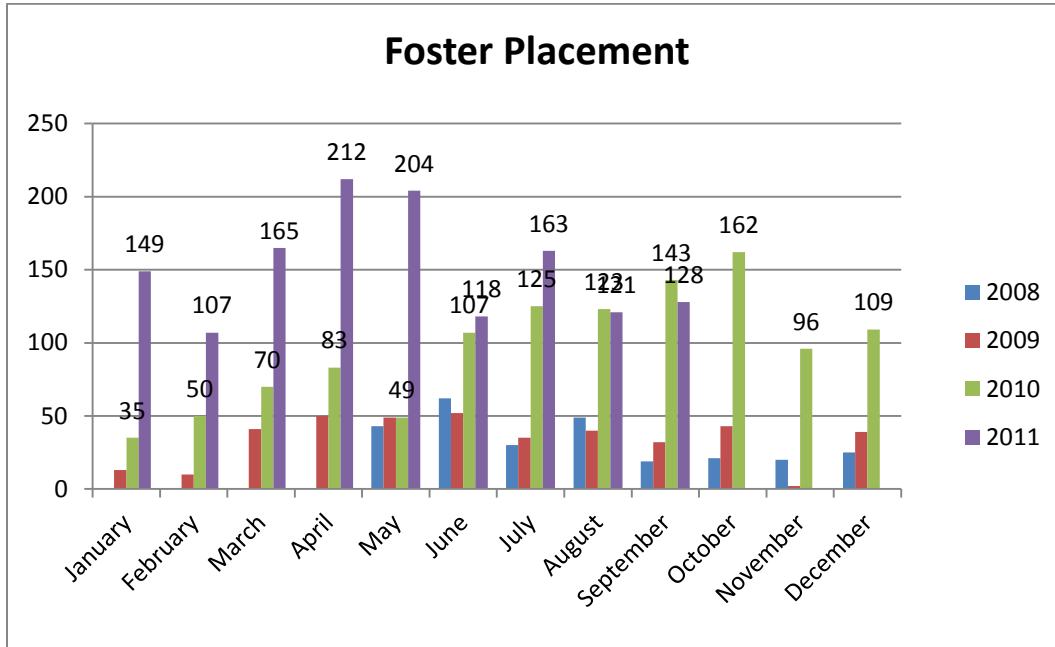
NOTE: A decrease in total numbers or percentage will show a (-) symbol and be in red. Increases will be in blue and will not show a (+) symbol. NOTE: The first three columns show three different fiscal years, using the date range indicated on the top left corner of the report. Each month, we will compare the same date range across the current and past three fiscal years for equal comparison.

Animal Control Field Data



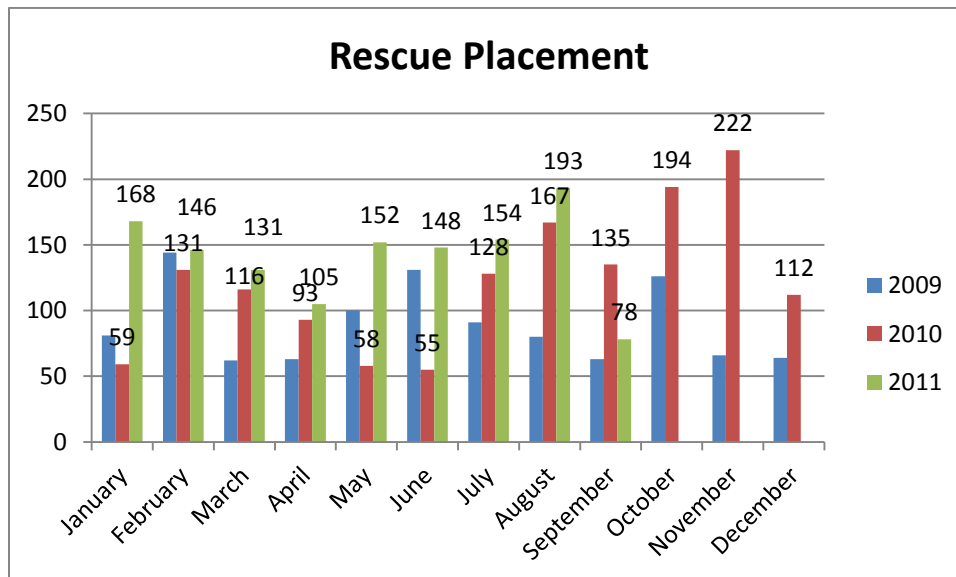
N=821; Wake County Animal Control responded to 821 requests for service in September 2011. Complaints for stray or loose animals continues to contribute to about half of all calls.

Year over year comparison: Foster Placement



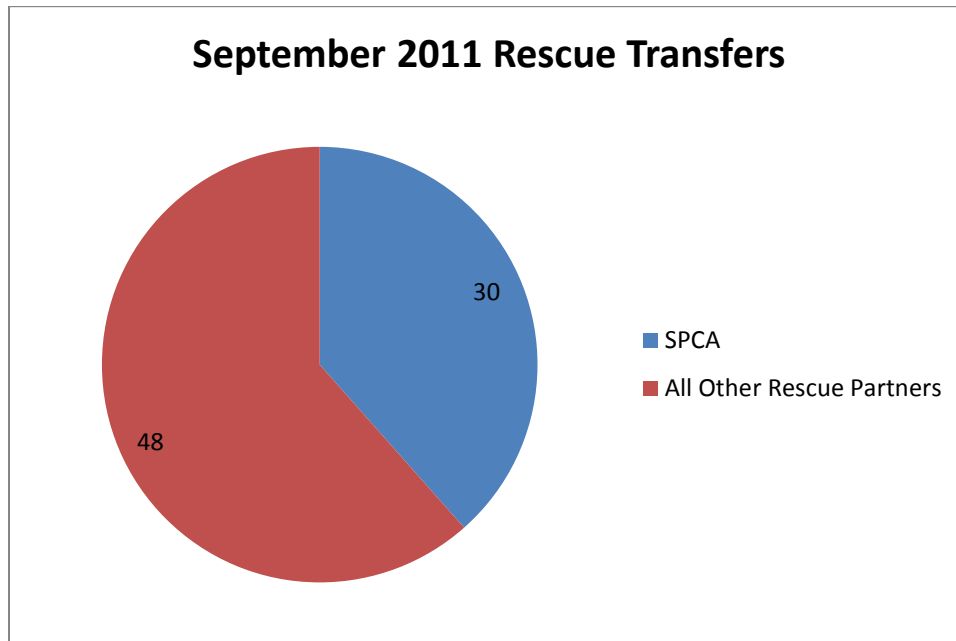
n=128; during the month of September, one hundred twenty-eight (128) animals were placed into foster care.

Year over year comparison: Rescue Placement



n=78; Rescue placement is 57% lower than this month last year. During the month of September, seventy-eight (78) animals were placed into the care of partnering rescue groups and adoption centers.

Distribution of Rescue Placement



N=78; WCAC transferred 30 animals to the SPCA of Wake County and 48 animals to our other rescue partners.

Top Canine and Feline Transfers

September 2011	Canine
Faulkner Animal Rescue and Recovery	16
SPCA of Wake County	15
Refurbished Canine Rescue	7
Golden "S" Rescue	4
Camp Canines	3

September 2011	Feline
SPCA of Wake County	15
Blind Cat Rescue and Sanctuary, Inc.	3
Cape Fear Rescue Rangers	1
Goathouse Refuge	1
SAFE Haven for Cats	1