

Definitions

Intake: Animals admitted to the Animal Center. These include animals surrendered by the general public, picked up by Animal Control and animals born at the Center.

Adoption: Includes animals adopted to new homes and transferred to qualifying rescue groups.

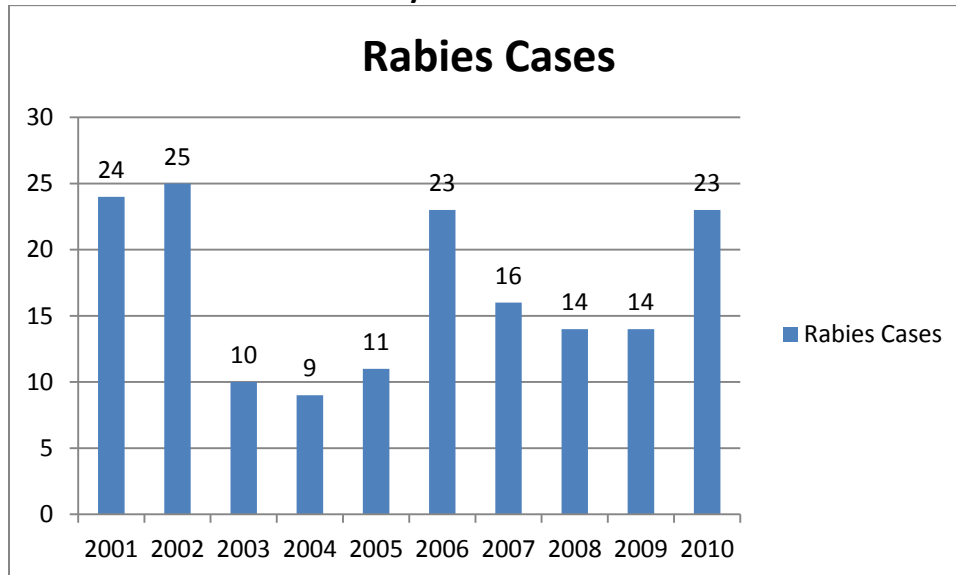
Reclaim: Animals reclaimed by their owners after being found as strays or after completing quarantine period.

Euthanasia: Animals humanely euthanized at the Center. This includes animals that reside at the Animal Center and animals surrendered by their owner for euthanasia for medical or behavioral reasons.

Animal Center News

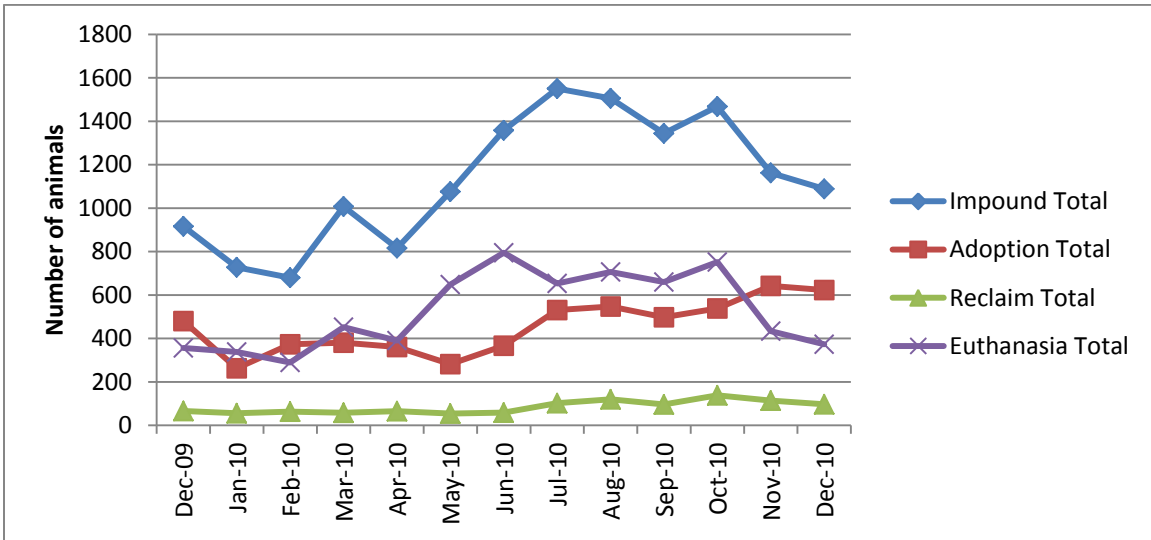
December was another big month for adoptions, capped off by our Paw-liday adoption promotion on December 18 and 19. Staff and volunteers have been working hard to get some of our long-timers out to new homes, with Cameron and Missy being notable successes.

Rabies: Positive confirmed laboratory cases



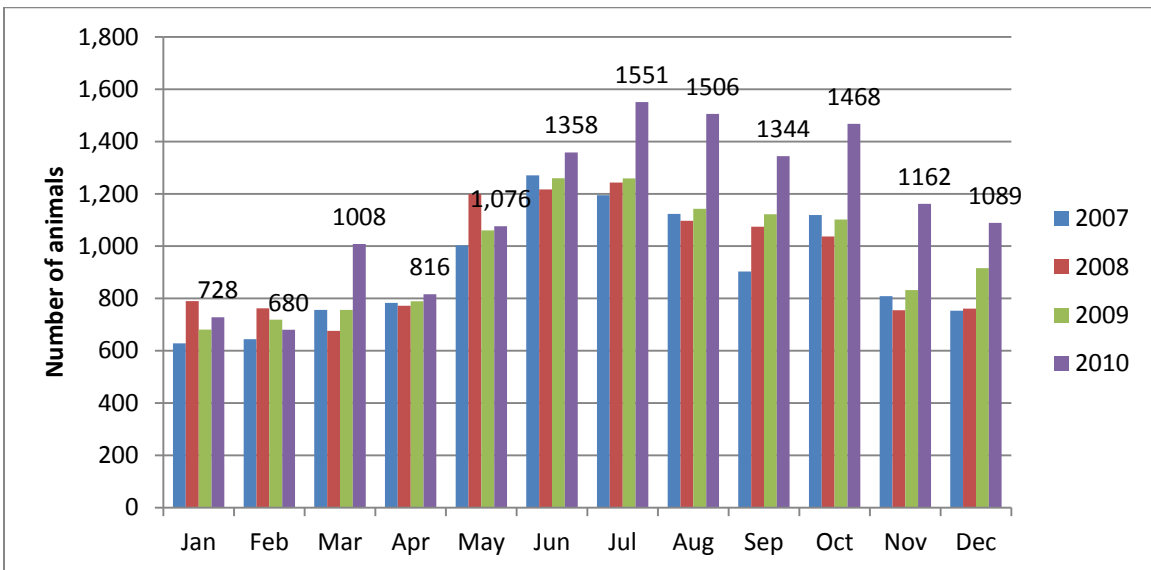
n=1 December 2010; year to date cases=23; Wake County averages 15.8 laboratory confirmed cases each year; since 2001, raccoon tests account for 56% of all species that test positive in Wake County; rabies is enzootic (present in wildlife) in all NC counties. This year, we saw a higher than normal amount of positive cases.

Animal Center Statistical Summary



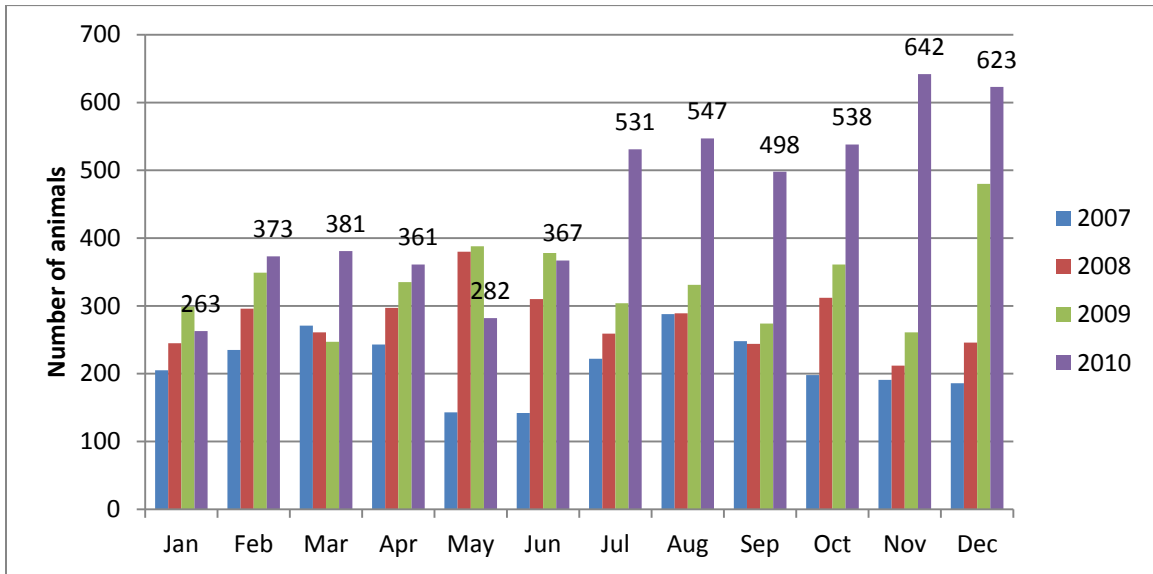
Ebb and Flow of animal intake: As depicted above, animal intake increases significantly in the warm months and drops in the cold months. This is typically associated with an increase in puppy and kitten litters in warm months. Adoptions do not normally increase to match the increase in intake so euthanasia rates can increase with intake. Over the past two months, adoptions and transfers have increased and euthanasia has decreased significantly, as seen above as the adoption line crosses and stays above the euthanasia line.

Animal Center Intake monthly comparison



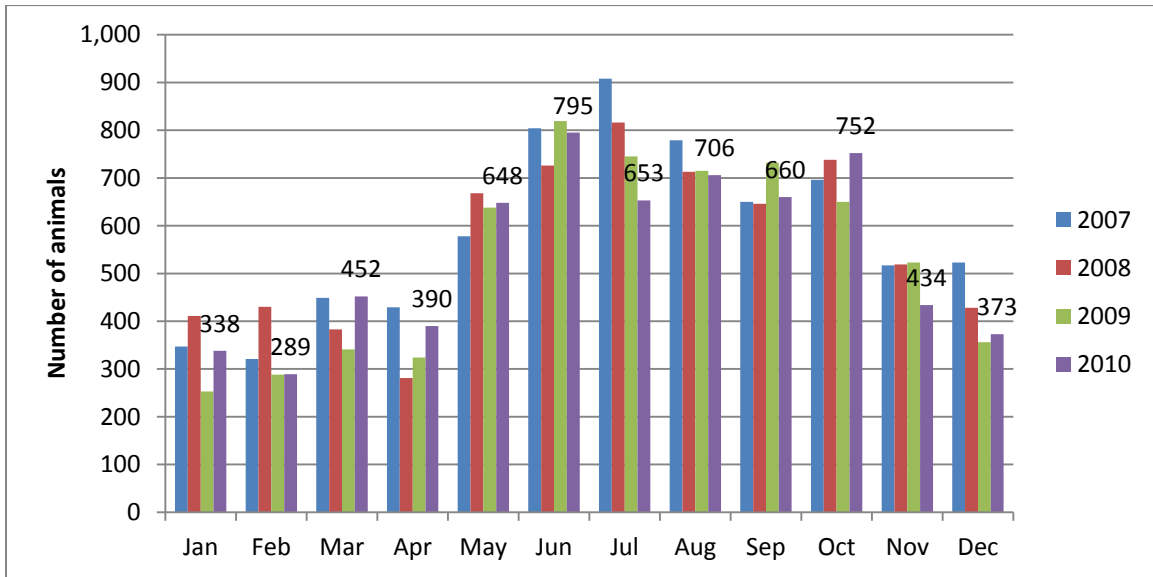
n=1089; Intake is 18% higher than December 2009. This fiscal year, the Animal Center became the sole intake facility in the County. We are currently experiencing a 28% increase for the fiscal year.

Adoption/Transfer Monthly Comparison



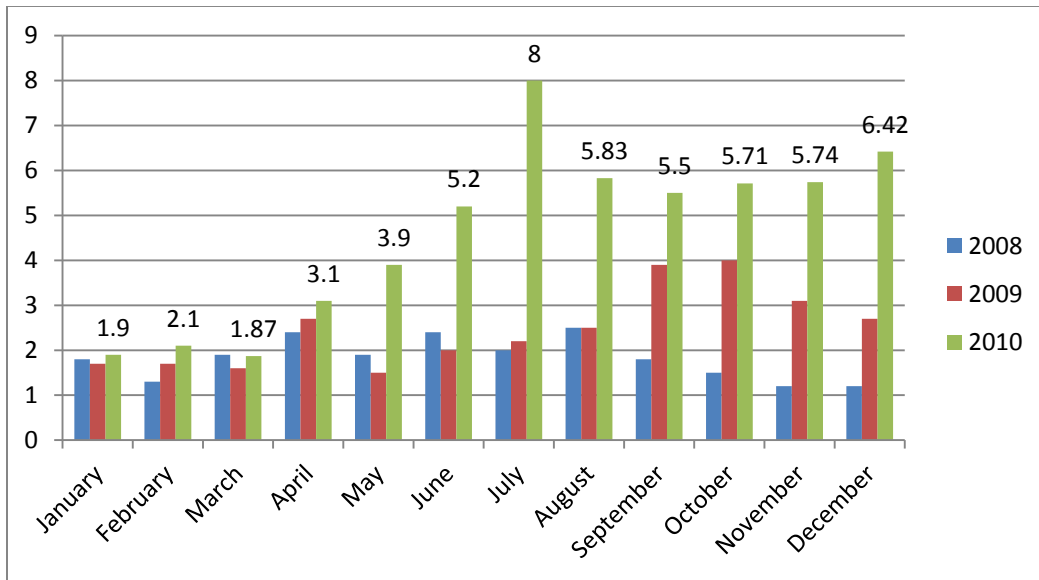
n=623; data represents a combination of typical adoptions to new families and transfers to partner rescue groups; 30% increase in adoptions over December. Last December was our first month over 400 adoptions and transfers thanks to a month long adoption special. Since the expansion, we have exceeded 480 every month. This is tremendous and we are very proud of the support we have received from the citizens of Wake County!

Euthanasia monthly comparison



n=373; the euthanasia numbers are 5% higher than this month last year.

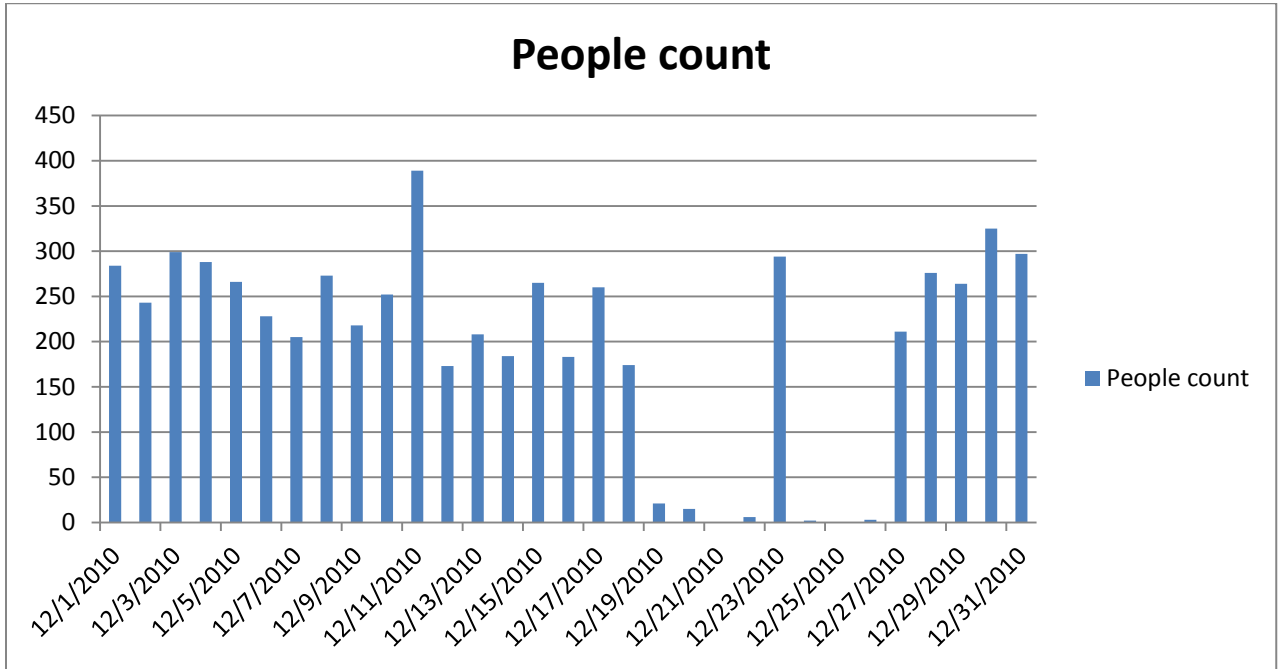
Volunteer hours by FTE



n=6.42 FTEs; Volunteers logged enough hours this month to equal 6.42 extra full time employees. This includes dog walking, socialization, off-site events and work promoting animals in the community, just to name a few. For the entire year of 2010, volunteers logged 9579 hours. Amazing!

Front Door Counter

This month's door data is flawed because one of the sensors was knocked off the wall twice.



**Wake County Animal Center
Statistical Report**

Date Range: July 1-December 31

Date Prepared:

1/3/2011

| | YTD FY09 | Percent | YTD FY10 | Percent | YTD FY11 | Percent | Nov-10 | Percent |
|-----------------------|-------------|------------|-------------|------------|-------------|---------------|-------------|---------------|
| Intake Dog | 2734 | | 2839 | | 3757 | | 619 | |
| Intake Cat | 3064 | | 3293 | | 4004 | | 433 | |
| Intake Other | 169 | | 146 | | 297 | | 37 | |
| Intake Total | 5967 | | 6278 | | 8058 | | 1089 | |
| Adoption Dog | 906 | 33% | 959 | 34% | 1483 | 39.47% | 315 | 50.89% |
| Adoption Cat | 353 | 12% | 494 | 15% | 861 | 21.50% | 180 | 41.57% |
| Adoption Other | 29 | 17% | 64 | 44% | 77 | 25.93% | 16 | 43.24% |
| Adoption Total | 1288 | 22% | 1517 | 24% | 2421 | 30.04% | 511 | 46.92% |
| Transfer Dog | 200 | 7% | 393 | 14% | 474 | 12.62% | 59 | 9.53% |
| Transfer Cat | 39 | 1% | 73 | 2% | 432 | 10.79% | 48 | 11.09% |
| Transfer Other | 36 | 21% | 25 | 17% | 52 | 17.51% | 5 | 13.51% |
| Transfer Total | 275 | 5% | 491 | 8% | 958 | 11.89% | 112 | 10.28% |
| Reclaim Dog | 327 | 12% | 348 | 12% | 588 | 15.65% | 84 | 13.57% |
| Reclaim Cat | 39 | 1% | 41 | 1% | 76 | 1.90% | 13 | 3.00% |
| Reclaim Other | 2 | 1% | 3 | 2% | 5 | 1.68% | 0 | 0.00% |
| Reclaim Total | 368 | 6% | 392 | 6% | 669 | 8.30% | 97 | 8.91% |
| Euth Dog | 1170 | 43% | 1040 | 37% | 980 | 26.08% | 130 | 21.00% |
| Euth Cat | 2609 | 85% | 2634 | 80% | 2564 | 64.04% | 236 | 54.50% |
| Euth Other | 81 | 48% | 26 | 18% | 114 | 38.38% | 7 | 18.92% |
| Euth Total | 3860 | 65% | 3700 | 59% | 3658 | 45.40% | 373 | 34.25% |

| | Total # | Percentage |
|--|---------|------------|
| Change in intake from FY10 to FY11 | 1780 | 28% |
| Change in adoptions from FY10 to FY11 | 904 | 60% |
| Change in transfers from FY10 to FY11 | 467 | 95% |
| Change in euthanasia from FY10 to FY11 | -42 | -1% |
| Change in total cat live releases | 761 | 125% |
| Change in cat live release percentage | | 16% |
| Change in total dog live releases | 845 | 50% |
| Change in dog live release percentage | | 8% |

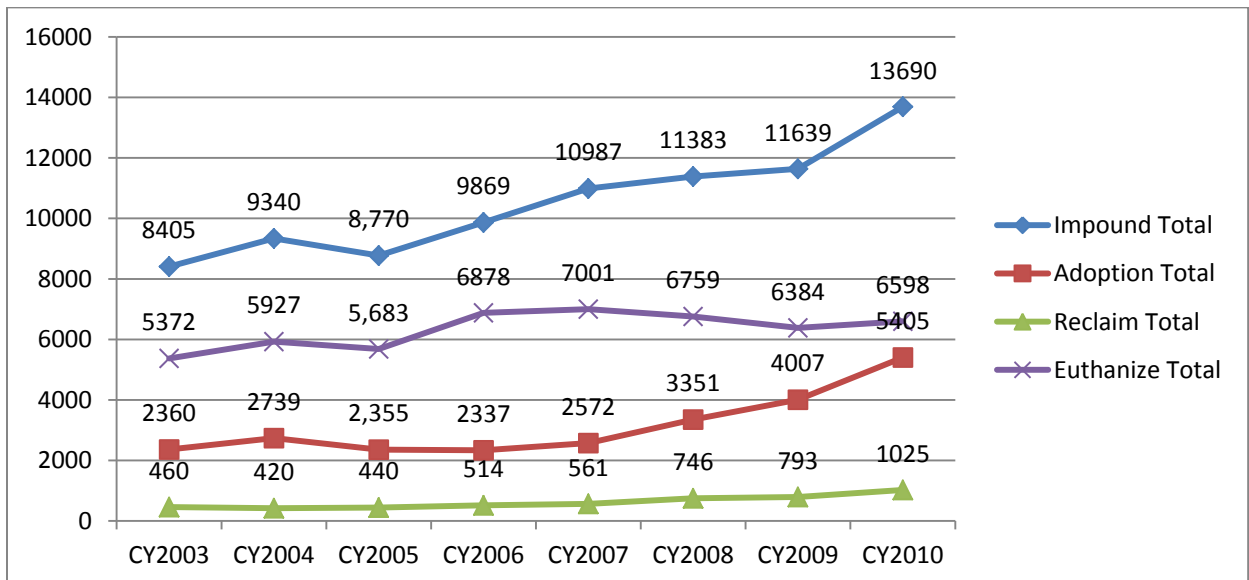
NOTE: A decrease in total numbers or percentage will show a (-) symbol and be in red. Increases will be in blue and will not show a (+) symbol.

NOTE: The first three columns show three different fiscal years, using the date range indicated on the top left corner of the report. Each month, we will compare the same date range across the current and past two fiscal years for equal comparison.

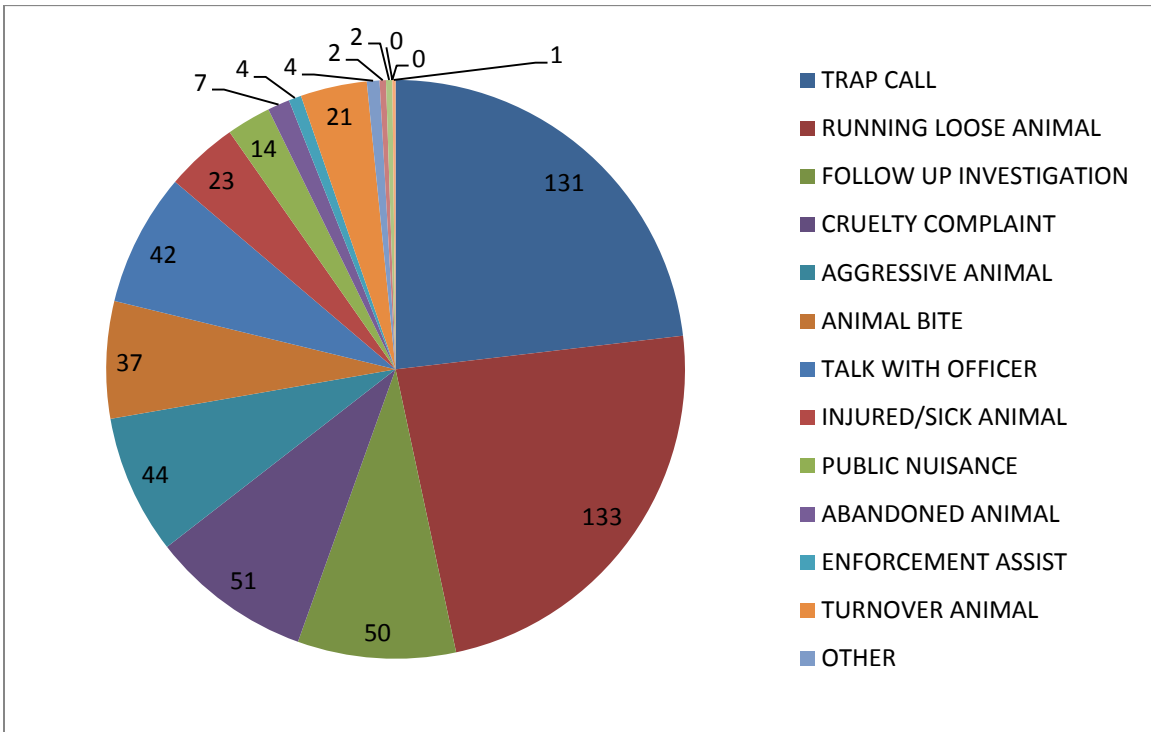
End of Calendar Year

Normally, we track our data with our fiscal year, but with the end of December, we also like to look at how we performed across the calendar year.

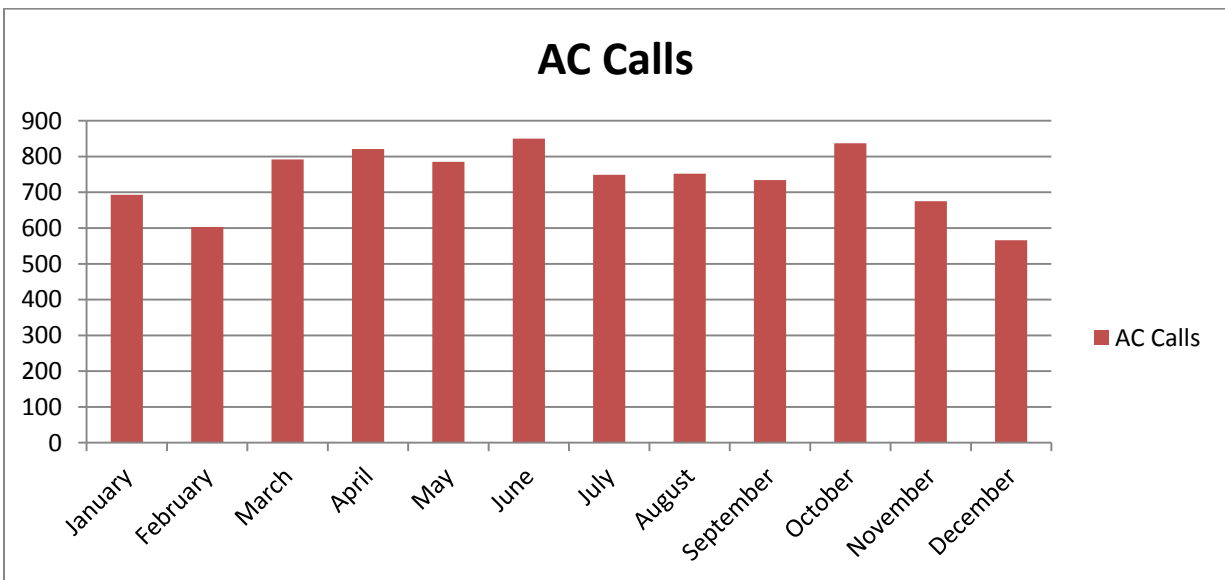
| | CY2003 | CY2004 | CY2005 | CY2006 | CY2007 | CY2008 | CY2009 | CY2010 |
|------------------------|-------------|-------------|--------------|-------------|--------------|--------------|--------------|--------------|
| Impound Dog | 3935 | 4229 | 4,248 | 4474 | 4864 | 5345 | 5480 | 6345 |
| Impound Cat | 4389 | 5026 | 4,398 | 5164 | 5754 | 5655 | 5771 | 6886 |
| Impound Other | 81 | 85 | 124 | 231 | 369 | 383 | 388 | 459 |
| Impound Total | 8405 | 9340 | 8,770 | 9869 | 10987 | 11383 | 11639 | 13690 |
| Adoption Dog | 1471 | 1744 | 1,616 | 1484 | 1640 | 2291 | 2719 | 3311 |
| Adoption Cat | 831 | 927 | 675 | 770 | 745 | 890 | 1040 | 1876 |
| Adoption Other | 58 | 68 | 64 | 83 | 187 | 170 | 248 | 218 |
| Adoption Total | 2360 | 2739 | 2,355 | 2337 | 2572 | 3351 | 4007 | 5405 |
| Reclaim Dog | 391 | 351 | 364 | 418 | 483 | 663 | 700 | 893 |
| Reclaim Cat | 64 | 67 | 68 | 90 | 76 | 79 | 88 | 123 |
| Reclaim Other | 5 | 2 | 8 | 6 | 2 | 4 | 5 | 9 |
| Reclaim Total | 460 | 420 | 440 | 514 | 561 | 746 | 793 | 1025 |
| Euthanize Dog | 1953 | 2017 | 2,097 | 2510 | 2225 | 2229 | 1895 | 1770 |
| Euthanize Cat | 3401 | 3895 | 3,563 | 4258 | 4646 | 4393 | 4416 | 4663 |
| Euthanize Other | 18 | 15 | 23 | 110 | 130 | 137 | 73 | 165 |
| Euthanize Total | 5372 | 5927 | 5,683 | 6878 | 7001 | 6759 | 6384 | 6598 |



Animal Control Field Data



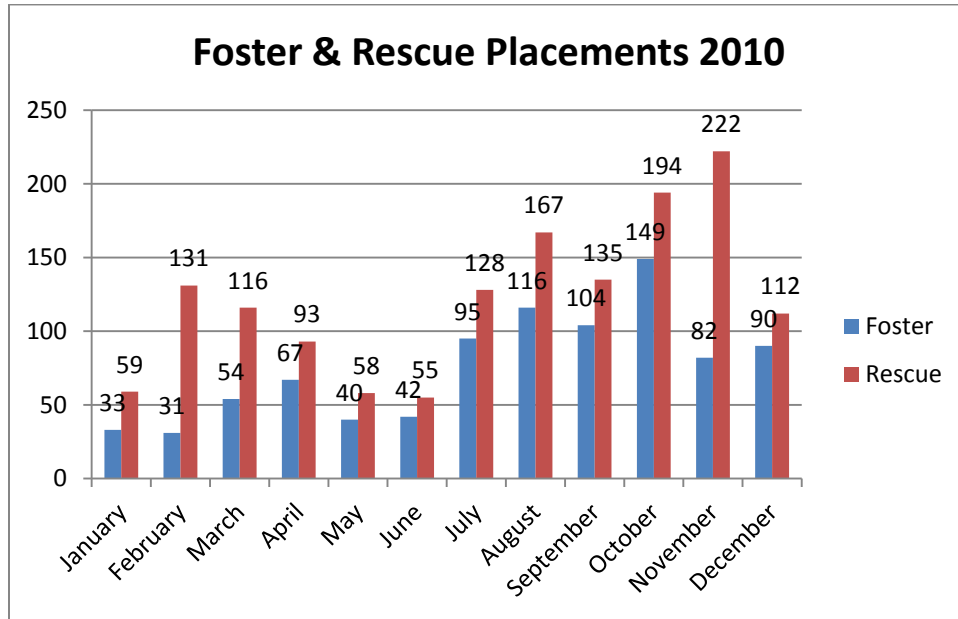
Wake County Animal Control responded to 566 requests for service in December 2010. Normally, Animal Control sees a decrease in requests for service when the temperatures decrease. Very few litters are born in the winter, reducing the amount of animals in the community. Complaints for stray or loose animals continues to contribute to about half of all calls. In 2010, Wake County Animal Control responded to 8857 requests for service, with fairly even distribution across all 12 months.



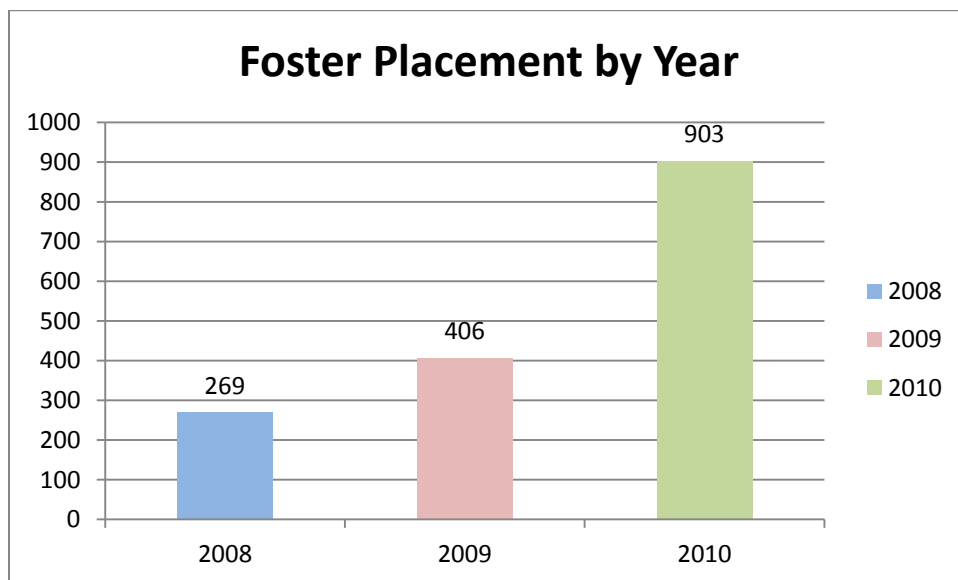
Foster and Rescue Report

During the month of November, ninety (90) animals were placed into foster care.

During the month of November, one hundred twelve (112) animals were placed into the care of partnering rescue groups and shelters.

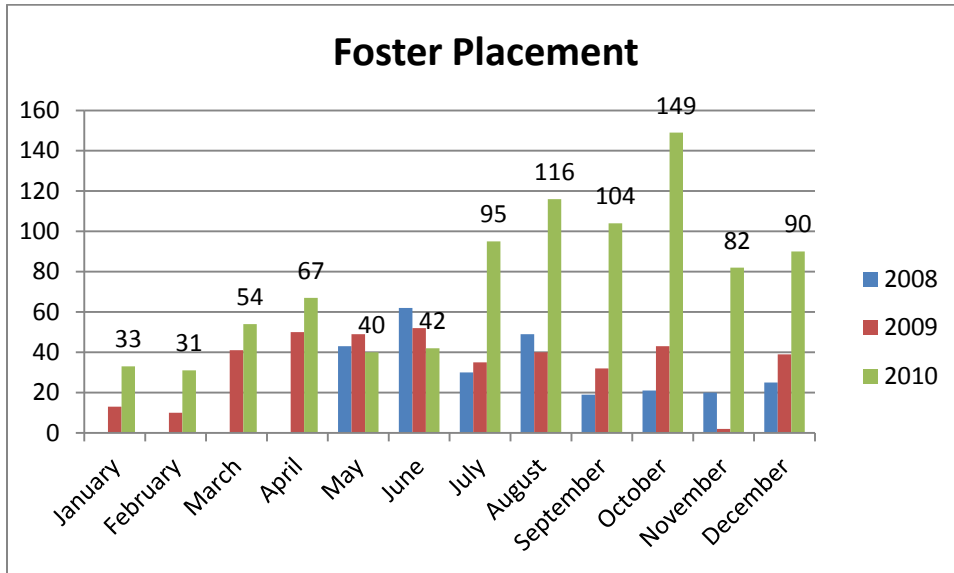


n=90 foster, 112 rescue



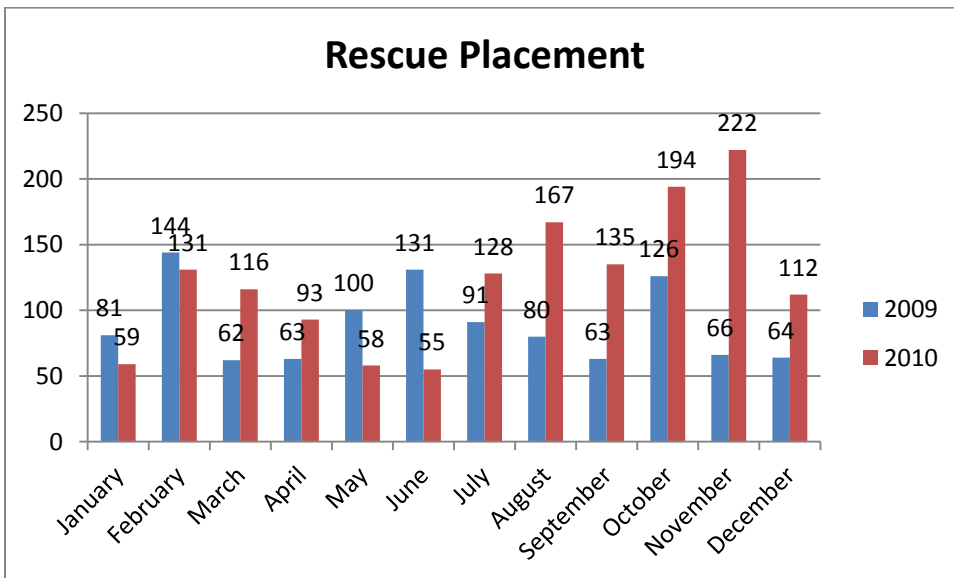
The tremendous growth in our foster program, shown here in this graph is all due to the hard work of our staff and volunteers who work hard each day to save lives. We have sent 222% more animals into foster care than in 2009.

Year over year comparison: Foster Placement

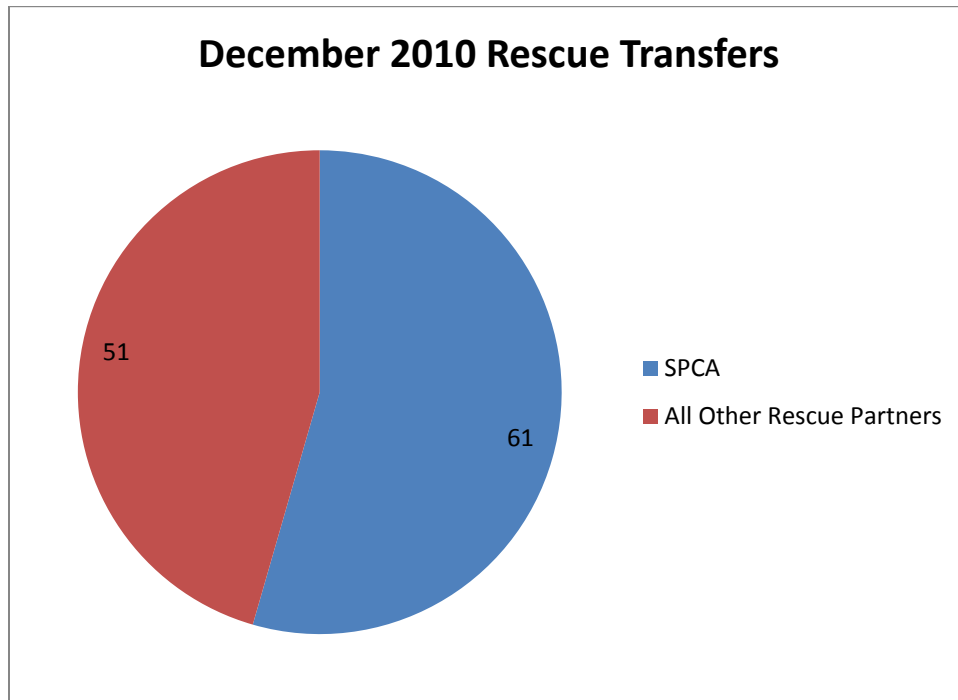


n=90; Due to the reduced number of kittens and puppies that arrive to the Center, the total number of animals placed into foster care during December is less than the preceding months. The foster program has seen tremendous growth this year thanks to the hard work of our staff, volunteers and most importantly, the people who open their homes to care for our animals. NOTE: An error was found this month in the foster placement data. The error has been corrected and previous month reports will be updated to reflect the correction.

Year over year comparison: Rescue Placement



n=112; We saw a decrease in rescue placement this year due to high adoption numbers, lower intake than warmer months and low litter intake. We also sent a



The SPCA of Wake County is our largest rescue partner, but we continue to have exceptional support from our rescue partners.

Top Canine and Feline Transfers

| Shelter/Rescues | Dogs Transferred |
|------------------------------------|------------------|
| SPCA of Wake County | 28 |
| Falkner Animal Rescue and Referral | 5 |
| Mitchell Mill A.H. | 3 |
| A New Leash On Life | 2 |
| Camp Canines, Inc | 2 |
| Hav-A-Hart Pet Rescue | 2 |
| NC Rottweiler Rescue | 2 |
| Paw Prints Animal Rescue | 2 |
| Whippet Rescue and Placement | 2 |

| Shelters/Rescues | Cats Transferred |
|---------------------------|------------------|
| SPCA of Wake County | 33 |
| SAFE Haven for Cats | 5 |
| Cat Angels Pet Adoptions | 4 |
| Pet and People Foundation | 2 |