

Wake County

# Animal Care, Control and Adoption

November 2011 Monthly Report



**Definitions**

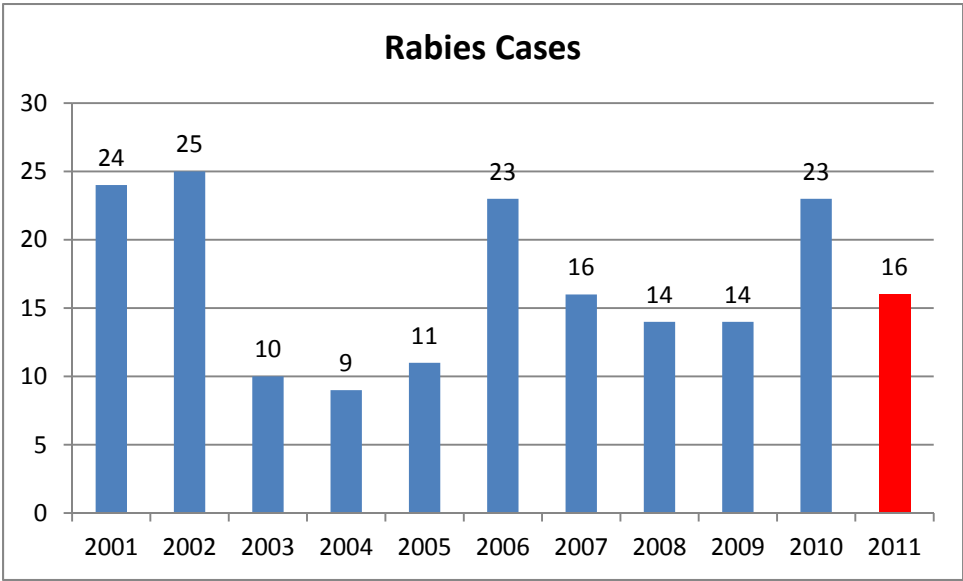
*Intake:* Animals admitted to the Animal Center. These include animals surrendered by the general public, picked up by Animal Control and animals born at the Center.

*Adoption:* Includes animals adopted to new homes and transferred to qualifying rescue groups.

*Reclaim:* Animals reclaimed by their owners after being found as strays or after completing quarantine period.

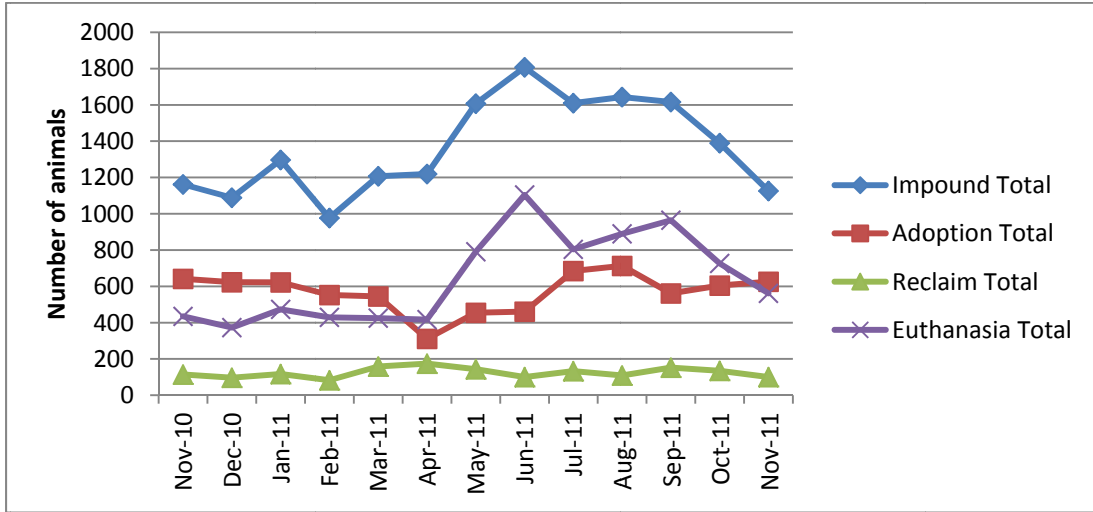
*Euthanasia:* Animals humanely euthanized at the Center. This includes animals that reside at the Animal Center and animals surrendered by their owner for euthanasia for medical or behavioral reasons.

**Rabies: Positive confirmed laboratory cases**



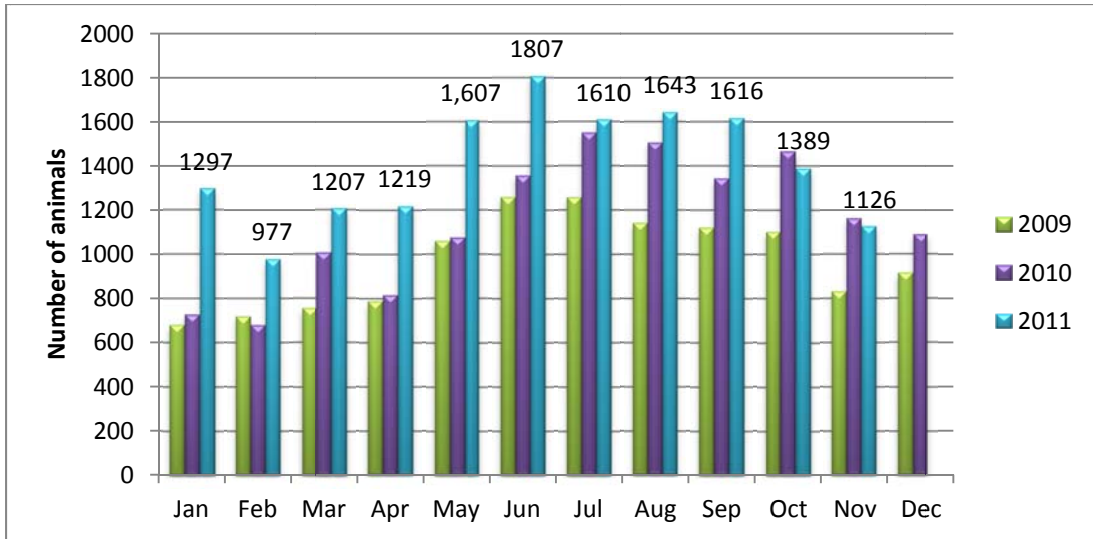
n=0; in the month of November 2011; year to date cases=16.

### Animal Center Statistical Summary



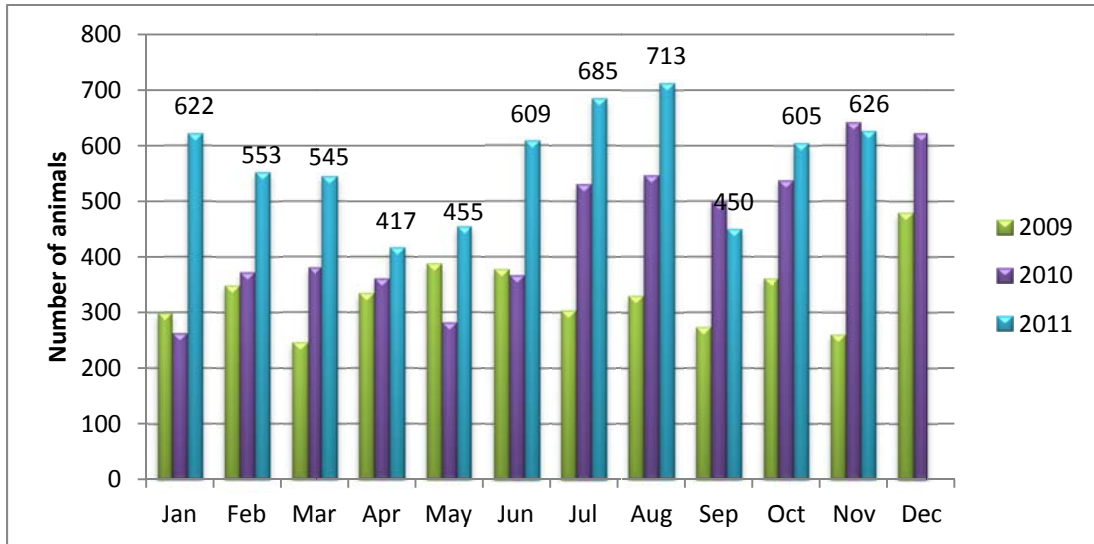
**Ebb and Flow of animal intake:** As depicted above, animal intake increases significantly in the warm months and drops in the cold months. This is typically associated with an increase in puppy and kitten litters in warm months. Adoptions do not normally increase to match the increase in intake so euthanasia rates can increase with intake.

### Animal Center Intake monthly comparison



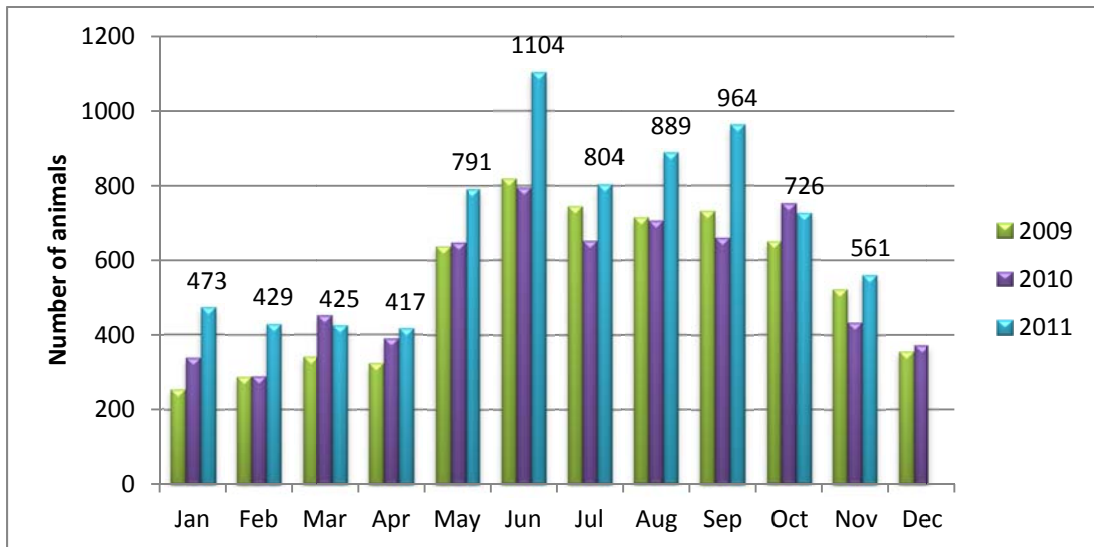
*n=1126; Intake is 3% lower than November 2010.*

### Adoption/Transfer Monthly Comparison



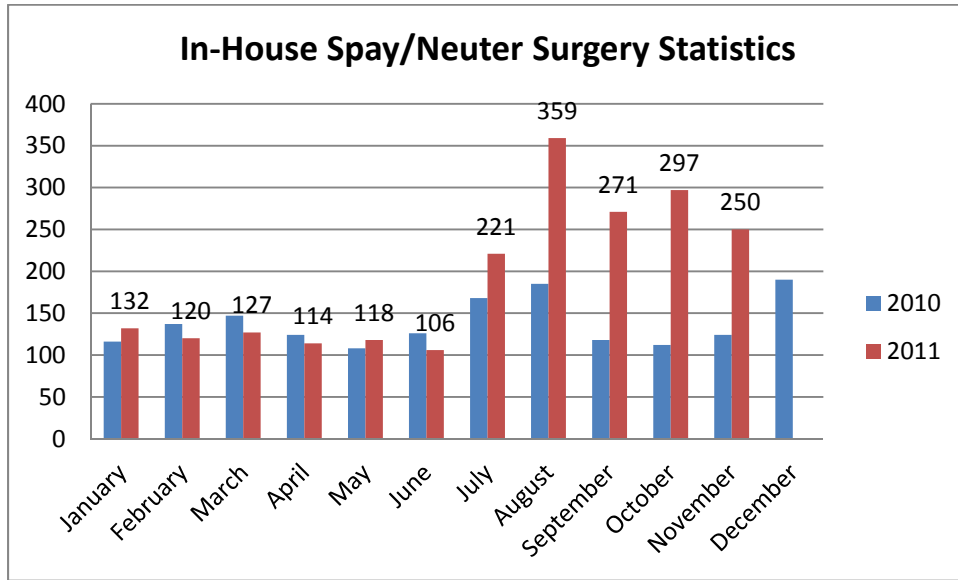
*n=626; data represents a combination of typical adoptions to new families and transfers to partner rescue groups; 2.5% decrease in adoptions/transfers over November last year.*

### Euthanasia monthly comparison



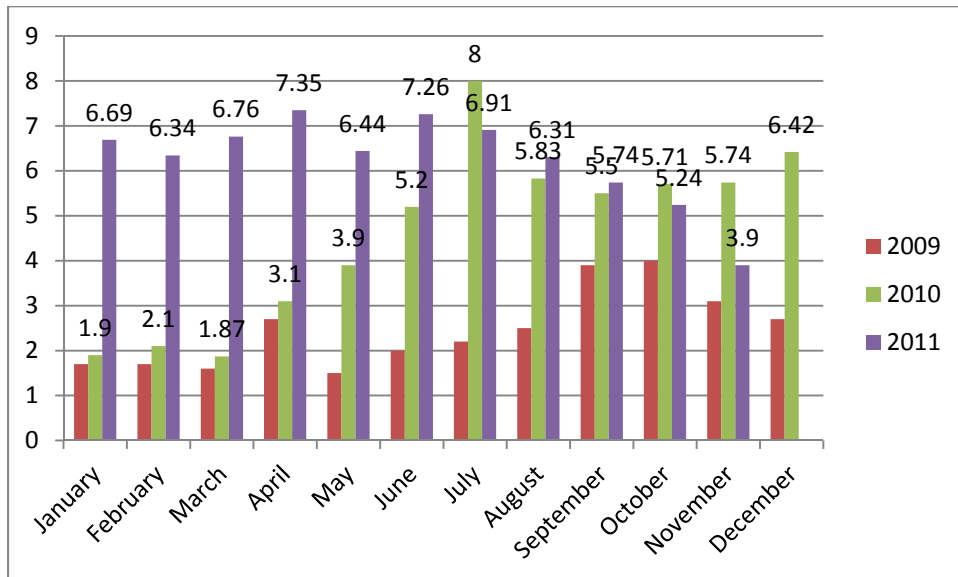
*n=561.*

**Spay/Neuter Surgeries monthly comparison**



*n=250; spay/neuter surgeries; Two hundred and fifty (250) spay or neuter surgeries were performed during the month of November by the Center’s in-house veterinary program. The surgery counts reflect only those surgeries performed in the Center, not those performed by third-party clinics in the community (SNAP, Saving Lives, Safe Care Feline Clinic).*

**Volunteer hours by FTE**



*n=3.90 FTEs; Volunteers logged enough hours this month to equal 3.90 extra full time employees. This includes dog walking, socialization, off-site events and work promoting animals in the community, just to name a few.*

## Wake County Animal Center Statistical Report

Date Range: July 1 - November 30, 2011

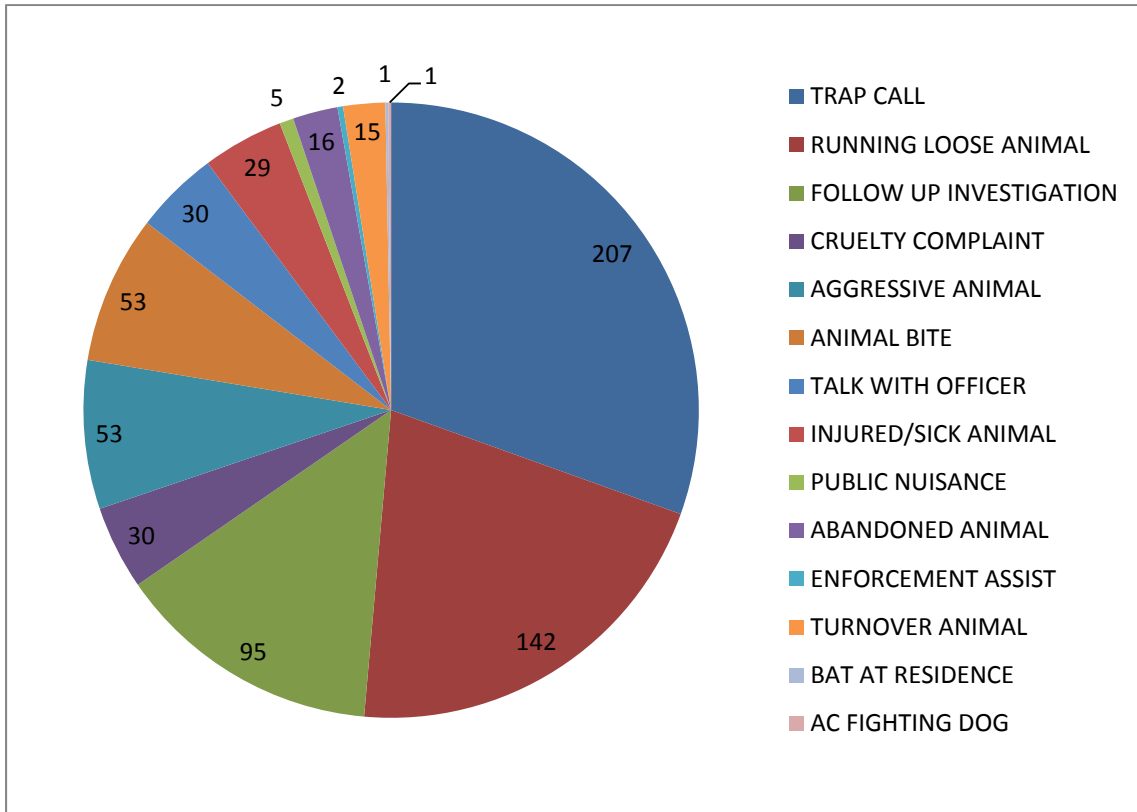
Date Prepared: 12/7/2011

	YTD FY09	%	YTD FY10	%	YTD FY11	%	YTD FY12	%	MTD	%
Intake Dog	2311		2358		3138		3456		558	
Intake Cat	2767		2933		3569		3596		540	
Intake Other	127		123		259		315		28	
<b>Intake Total</b>	<b>5205</b>		<b>5414</b>		<b>6966</b>		<b>7367</b>		<b>1126</b>	
Adoption Dog	740	32%	719	30%	1162	37%	1402	40.6%	247	44.3%
Adoption Cat	286	10%	315	11%	669	19%	817	22.7%	159	29.4%
Adoption Other	24	21%	37	30%	60	23%	79	25.1%	10	35.7%
<b>Adoption Total</b>	<b>1062</b>	<b>20%</b>	<b>1104</b>	<b>20%</b>	<b>1911</b>	<b>27%</b>	<b>2307</b>	<b>31.3%</b>	<b>418</b>	<b>37.1%</b>
Transfer Dog	176	8%	346	15%	415	13%	402	11.6%	88	15.8%
Transfer Cat	31	1%	65	2%	384	11%	233	6.5%	12	2.2%
Transfer Other	34	27%	16	13%	47	18%	35	11.1%	7	25.0%
<b>Transfer Total</b>	<b>241</b>	<b>5%</b>	<b>427</b>	<b>8%</b>	<b>846</b>	<b>12%</b>	<b>670</b>	<b>9.1%</b>	<b>107</b>	<b>9.5%</b>
Reclaim Dog	267	12%	291	12%	503	16%	544	15.7%	78	14.0%
Reclaim Cat	37	1%	33	1%	63	2%	79	2.2%	21	3.9%
Reclaim Other	2	2%	3	2%	5	2%	6	1.9%	1	3.6%
<b>Reclaim Total</b>	<b>306</b>	<b>6%</b>	<b>327</b>	<b>6%</b>	<b>571</b>	<b>8%</b>	<b>629</b>	<b>8.5%</b>	<b>100</b>	<b>8.9%</b>
Euth Dog	1017	44%	925	39%	855	27%	1257	36.4%	174	31.2%
Euth Cat	2380	86%	2437	83%	2339	66%	2540	70.6%	377	69.8%
Euth Other	47	37%	26	21%	109	42%	145	46.0%	10	35.7%
<b>Euth Total</b>	<b>3449</b>	<b>66%</b>	<b>3389</b>	<b>63%</b>	<b>3306</b>	<b>47%</b>	<b>3944</b>	<b>53.5%</b>	<b>561</b>	<b>49.8%</b>

	<b>Total</b>	<b>%</b>
Change in intake from FY11 to FY12	401	6%
Change in adoptions from FY11 to FY12	396	21%
Change in transfers from FY11 to FY12	-176	-21%
Change in euthanasia from FY11 to FY12	638	19%
Change in total cat live releases	13	1.2%
Change in total dog live releases	268	12.9%

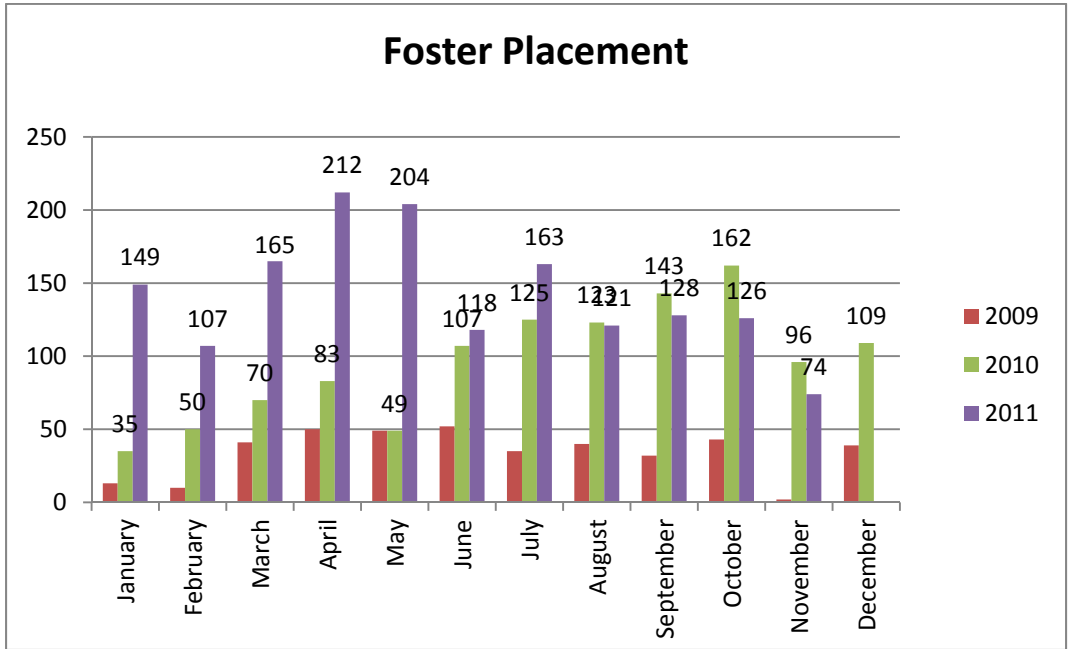
**NOTE: A decrease in total numbers or percentage will show a (-) symbol and be in red. Increases will be in blue and will not show a (+) symbol. NOTE: The first three columns show three different fiscal years, using the date range indicated on the top left corner of the report. Each month, we will compare the same date range across the current and past three fiscal years for equal comparison.**

### Animal Control Field Data



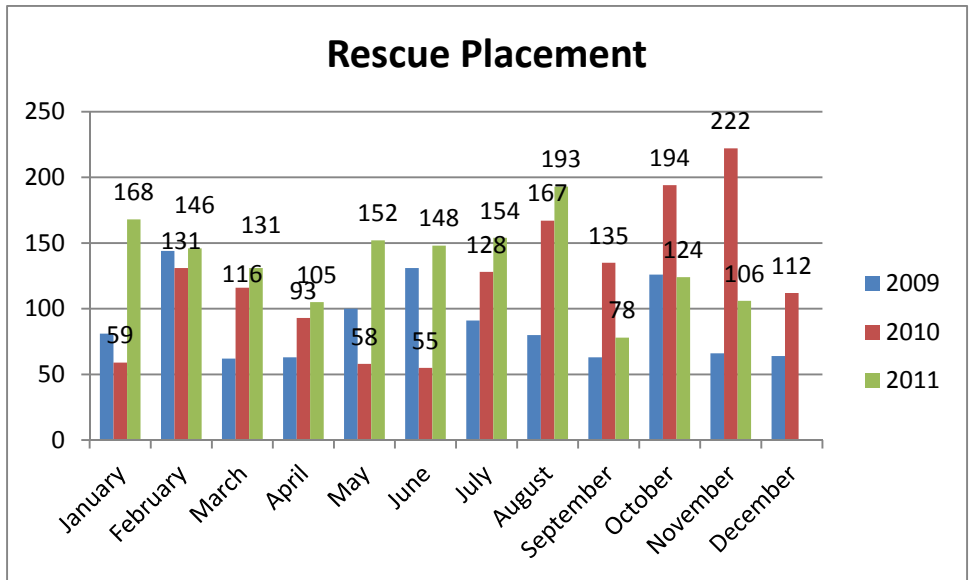
*n=686; Wake County Animal Control responded to 686 requests for service in November 2011. Complaints for stray or loose animals continues to contribute to about half of all calls.*

**Year over year comparison: Foster Placement**



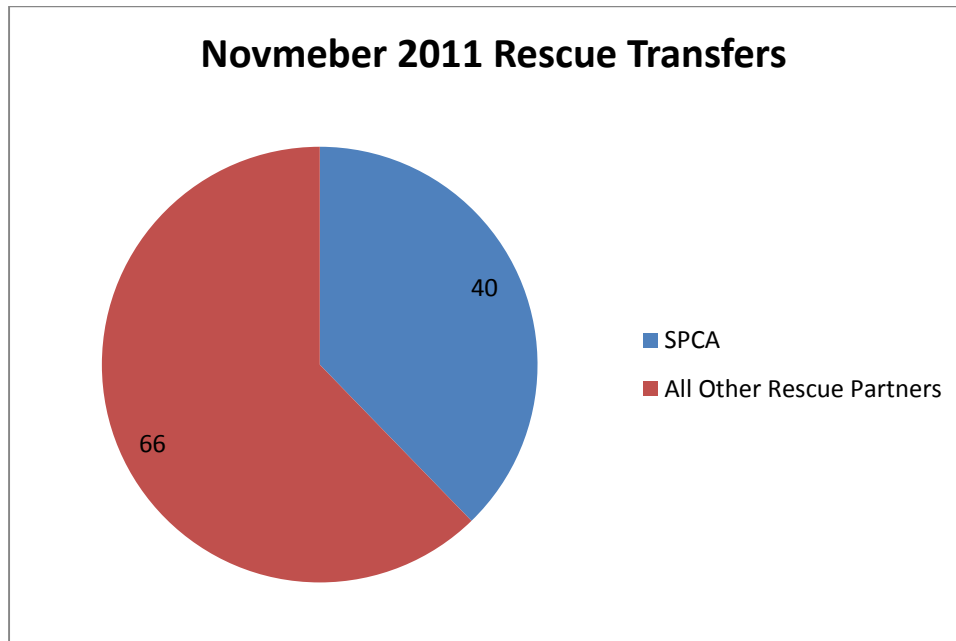
*n=74; during the month of November, seventy-four (74) animals were placed into foster care.*

**Year over year comparison: Rescue Placement**



*n=106; Rescue placement is 52% lower than this month last year. During the month of November, One-hundred six (106) animals were placed into the care of partnering rescue groups and adoption centers.*

## Distribution of Rescue Placement



*n=124; WCAC transferred 40 animals to the SPCA of Wake County and 66 animals to our other rescue partners.*

## Top Canine and Feline Transfers

November 2011	Canine
SPCA of Wake County	36
Mitchell Mill Animal Hospital	8
Golden "S" Rescue	6
Carolina Care Bullies	5

November 2011	Feline
SPCA of Wake County	4
Mitchell Mill Animal Hospital	3
Safe Haven for Cats	3