



## Definitions

*Intake:* Animals admitted to the Animal Center. These include animals surrendered by the general public, picked up by Animal Control and animals born at the Center.

*Adoption:* Includes animals adopted to new homes and transferred to qualifying rescue groups.

*Reclaim:* Animals reclaimed by their owners after being found as strays or after completing quarantine period.

*Euthanasia:* Animals humanely euthanized at the Center. This includes animals that reside at the Animal Center and animals surrendered by their owner for euthanasia for medical or behavioral reasons.

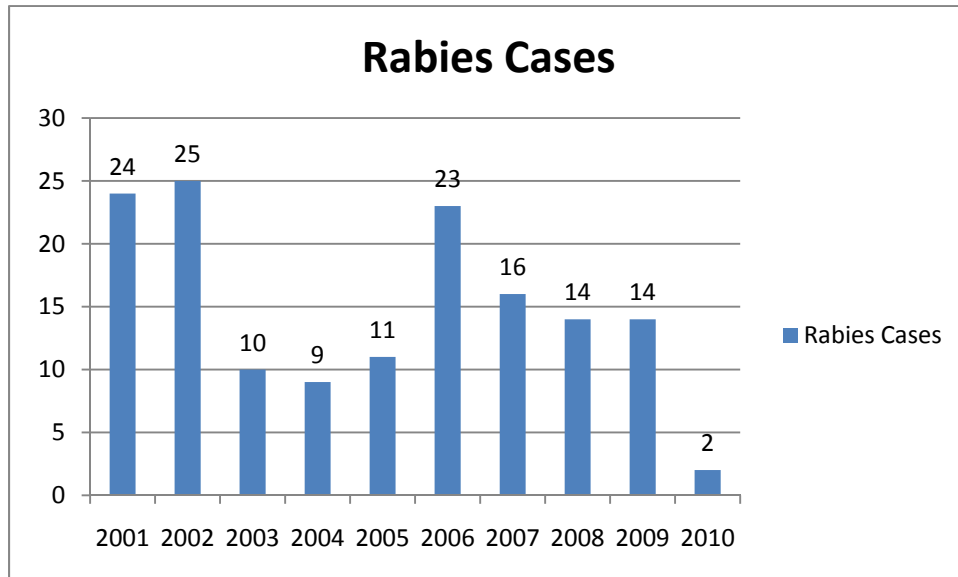
NOTE: The data included in the graphs below represent all types of animals except for the data table on page 7. That table only includes dogs and cats, which represent the vast majority of the animals we deal with.

## Expansion Construction Update

- Well, it finally looks like we have a building now. The roof and all exterior walls are up, now they are working hard to get the interior walls and all the utilities installed. We hope to see more work on the smaller Canine Isolation addition this month as well as work on the front parking lot.

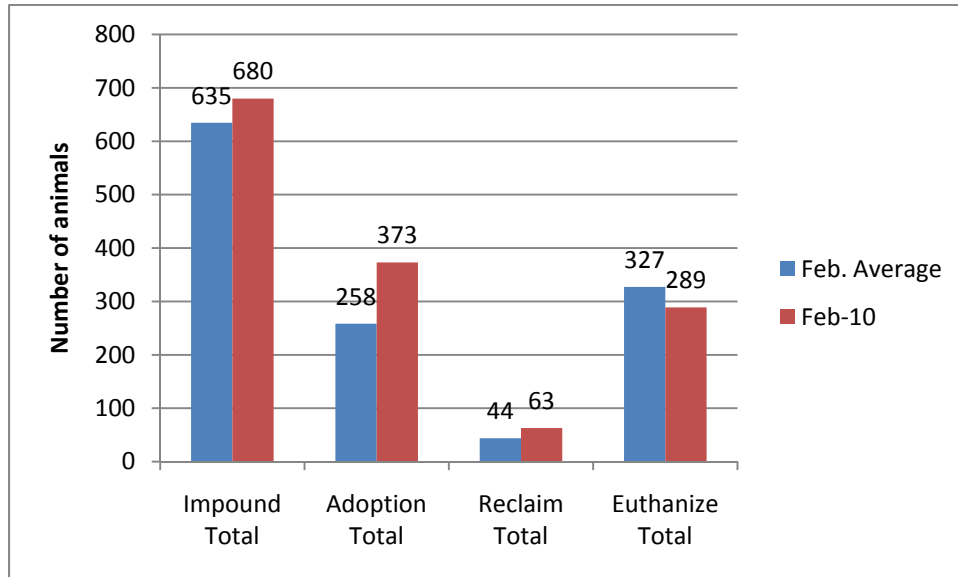


**Rabies: Positive confirmed laboratory cases**

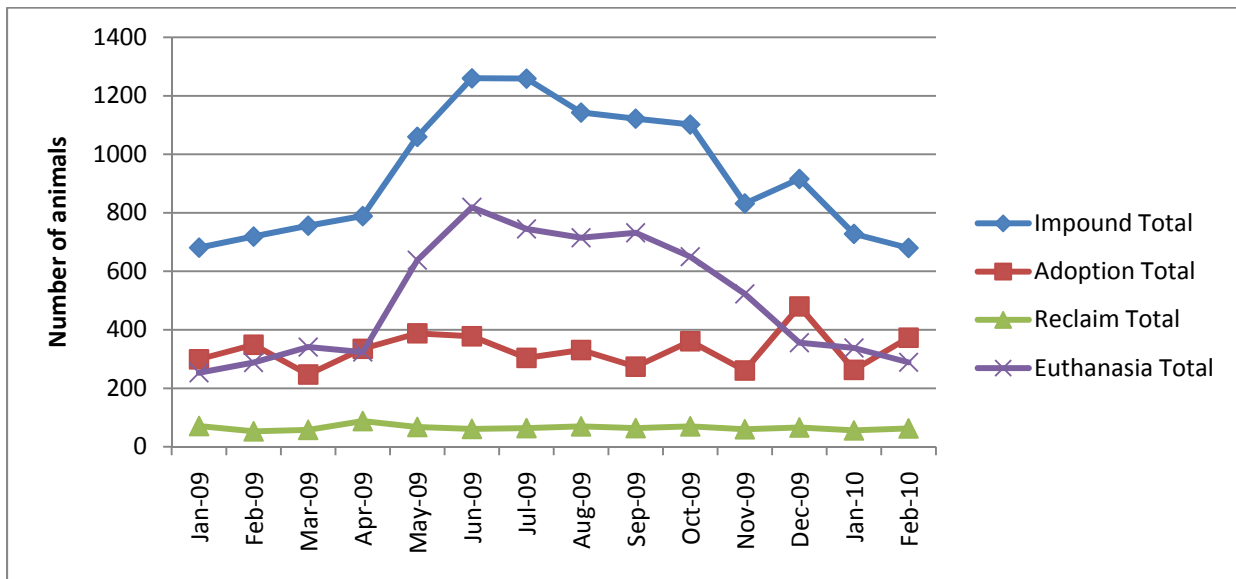


n=1 February 2010; year to date cases=2; Wake County averages 15.8 laboratory confirmed cases each year; since 2001, raccoon tests account for 56% of all species that test positive in Wake County; rabies is enzootic (present in wildlife) in all NC counties

## Animal Center Statistical Summary

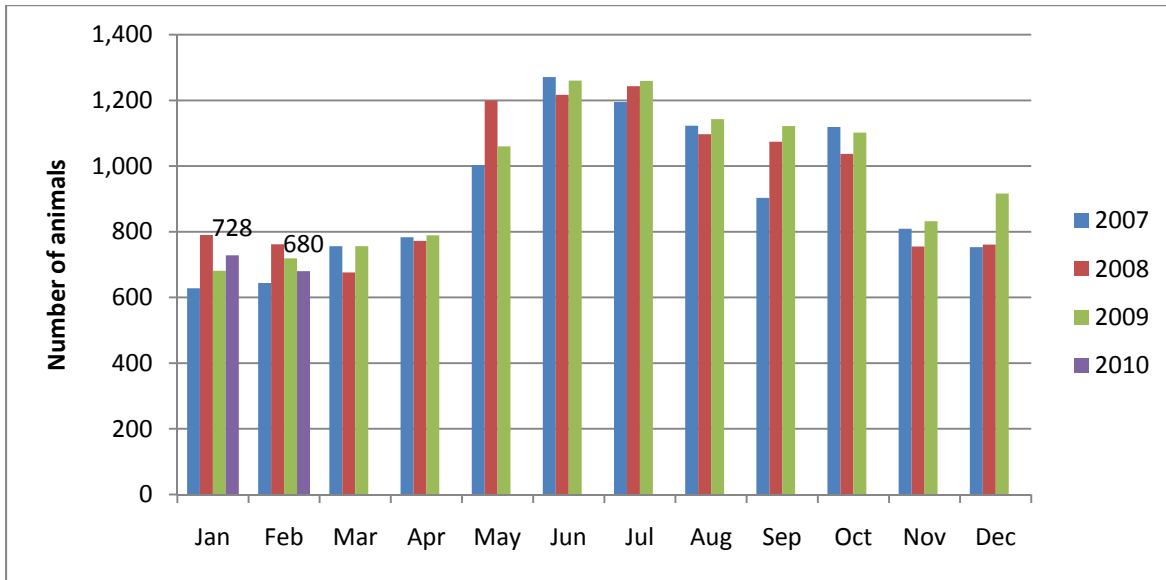


February 2010 Intake is 7% higher than the average, Adoptions are 45% higher, Reclaims are 43% higher and euthanasia is 13% lower than the average. *Note: Averages include data from FY02 until the current month*



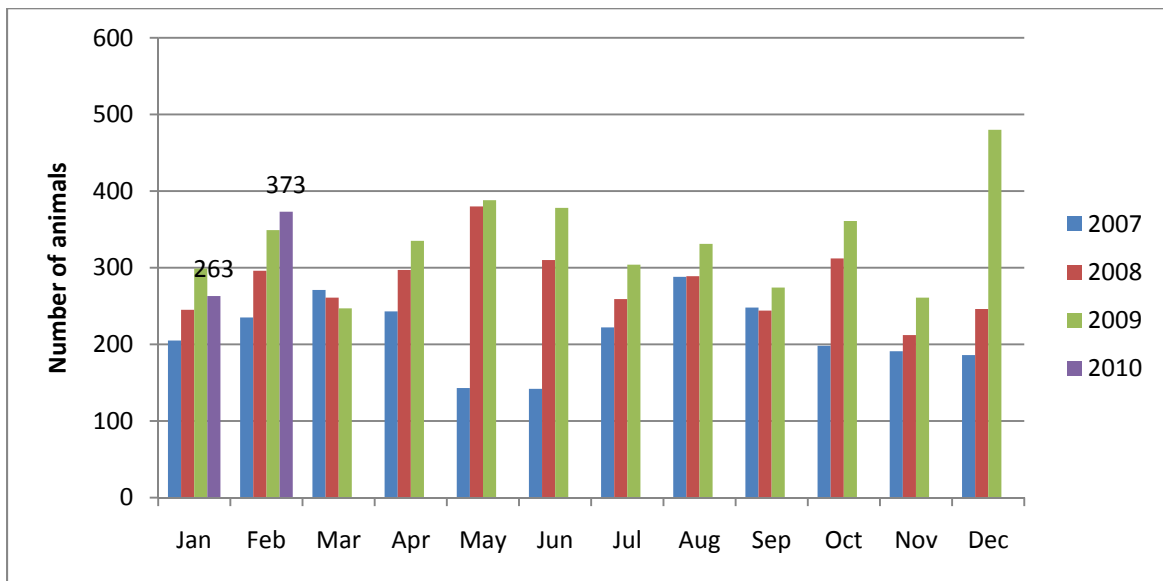
**Ebb and Flow of animal intake:** As depicted above, animal intake increases significantly in the warm months and drops in the cold months. This is typically associated with an increase in puppy and kitten litters in warm months. Adoptions do not normally increase to match the increase in intake so euthanasia rates can increase with intake. We saw a rebound in adoptions and transfers this month following a slow January.

### Animal Center Intake monthly comparison



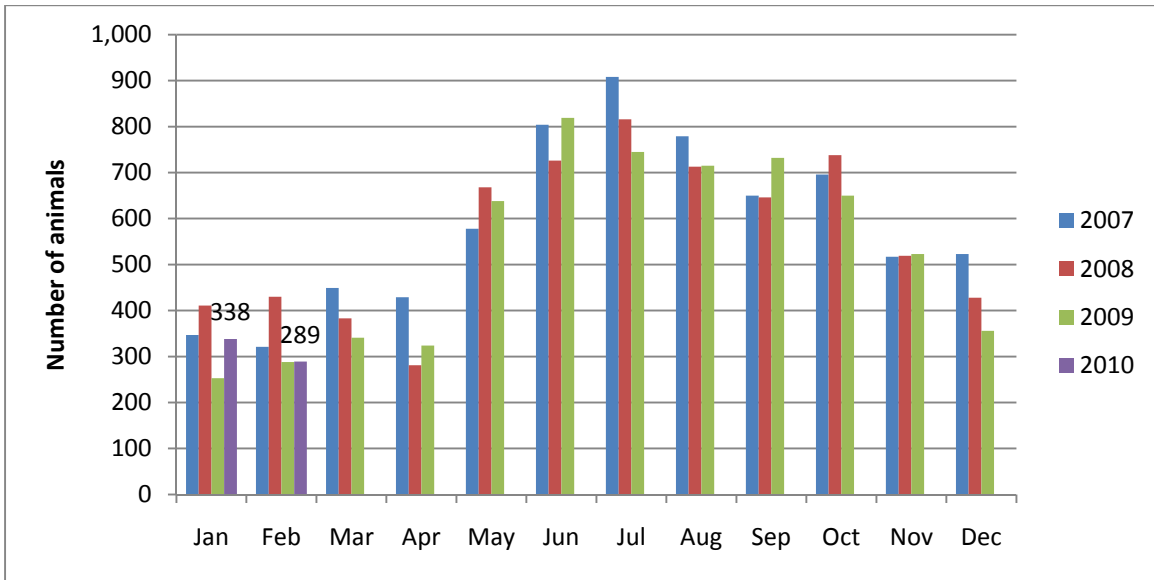
*n=680; Intake is 6% lower than February 2009.*

### Adoption Monthly Comparison



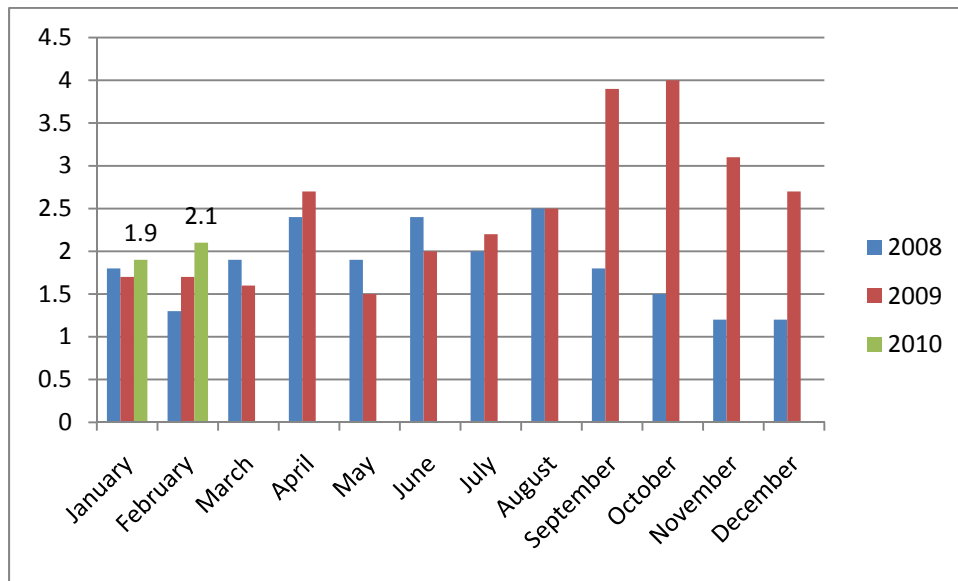
*n=373; data represents a combination of typical adoptions to new families and transfers to partner rescue groups; 7% increase in adoptions over February 2009 and a 42% increase from the month before. We had anticipated a slow January month after a record adoption month in December 2009.*

### Euthanasia monthly comparison



*n=289; the euthanasia numbers are less than 1% higher than this month last year.*

### Volunteer hours by FTE



*n=2.1 FTEs; Volunteers logged enough hours this month to equal 2.1 extra full time employees. This includes dog walking, socialization, off-site events and work promoting animals in the community, just to name a few.*

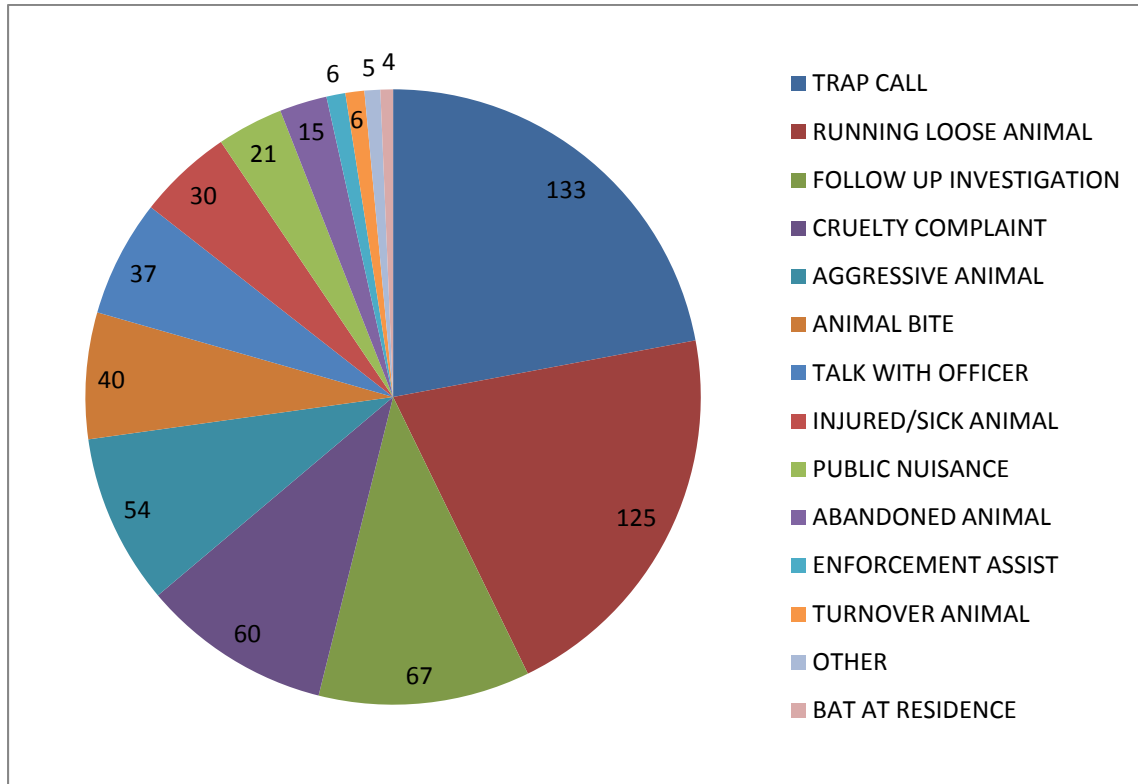
## Animal Shelter Statistics for period **February 1-28, 2010**

Year to year comparison is over the same timeframe each year.	2007-2008		2008-2009		2009-2010 (YTD)					
	Count	Perf.	Count	Perf.	1st Q	2nd Q	Jan-10	Feb-10	YTD	Performance
Impound Dog	3,355		3,524		1492	1392	397	403	3684	
Impound Cat	3,844		3,553		1944	1397	312	266	3919	
<b>Impound Total</b>	<b>7,199</b>		<b>7,077</b>		<b>3436</b>	<b>2789</b>	<b>709</b>	<b>669</b>	<b>7603</b>	
Garner Animal Control Intake					96	90	22	30	238	
Cary Animal Control Intake					54	59	22	8	143	
Adoption Dog	1,273	37.9%	1,488	42.2%	651	711	182	246	1790	48.6%
Adoption Cat	459	11.9%	551	15.5%	217	348	76	107	748	19.1%
<b>Adoption Total</b>	<b>1,732</b>	<b>24.1%</b>	<b>2,039</b>	<b>28.8%</b>	<b>868</b>	<b>1059</b>	<b>258</b>	<b>353</b>	<b>2538</b>	<b>33.4%</b>
Reclaim Dog	378	11.3%	437	12.4%	171	179	42	56	448	12.2%
Reclaim Cat	45	1.2%	54	1.5%	27	15	14	7	63	1.6%
<b>Reclaim Total</b>	<b>423</b>	<b>5.9%</b>	<b>491</b>	<b>6.9%</b>	<b>198</b>	<b>194</b>	<b>56</b>	<b>63</b>	<b>511</b>	<b>6.7%</b>
Euthanize Dog	1,538	45.8%	1,389	39.4%	569	478	107	106	1260	34.2%
Euthanize Cat	3,306	86.0%	2,924	82.3%	1605	1044	227	177	3053	77.9%
<b>Euthanize Total</b>	<b>4,844</b>	<b>67.3%</b>	<b>4,313</b>	<b>60.9%</b>	<b>2174</b>	<b>1522</b>	<b>334</b>	<b>283</b>	<b>4313</b>	<b>56.7%</b>

FOSTER-TO-ADOPT PROGRAM	FY 09	1st Q	2nd Q	Jan-10	Feb-10	FY10
Animals Placed into Program	188	155	182	32	56	<b>613</b>
Adoptions Completed		104	100	44	34	<b>282</b>
Animals Returned		6	6	4	5	<b>21</b>
Animals Remaining in FTA						<b>310</b>

\*The large chart above represents both a listing of monthly performance and a comparison to the last two years. The same amount of months is compared for each year. For example, it shows that in FY08 at this time of the year, we had adopted out 24.1% of animals, in FY09 28.8% and this fiscal year 33.4% have been adopted.

## Animal Control Summary



Total requests for service for February 2010 is 603. Breakdown by call type is represented in the pie graph above. By far running loose animals and trap requests, which are related to running loose animals, is the most frequent response.

## Community Outreach Report

### Offsite Events:

There were no offsite adoption events for the month of February.

### On-Air Events:

The Wake County Animal Center participated in three video recordings to be played on-air through the CW22 media channel as a "Creature Feature" and one with WRAL's "Pet of the Day". The CW22 studio is undergoing construction and has postponed taping from February 24<sup>th</sup> through April 1<sup>st</sup>.

Animal Adoption Statistics for On-Air Events  
February 2010

Animals On Air	4
Animal adopted	1
Animals transferred to a rescue group	3
Animals euthanized	0

100% Placement Success Rate

**Foster Program:**

There were thirty-one (31) animals placed into foster care during the month of February. There were also five (5) new foster homes approved all of which took home animals with Upper Respiratory Infections.

**Rescue Program:**

The Center has rekindled a partnership with Safe Haven for Cats which will undoubtedly benefit the lives of the Center's cats greatly. During this month, the organization saved the lives of nine (9) animals, including several medical cases and some with Upper Respiratory Infections. We are very excited about this relationship and look forward to strengthening our partnership.

The Center has also strengthened a partnership with the Cape Fear Rabbit House Society. During this month, they took three (3) rabbits from the Center, which is remarkable as they have not taken a rabbit from us in the past 2 years. There will be more exciting news to come in March as we work to strengthen our partnership with this group as well.

Total animals transferred to rescue in February: **131**