

Definitions

Intake: Animals admitted to the Animal Center. These include animals surrendered by the general public, picked up by Animal Control and animals born at the Center.

Adoption: Includes animals adopted to new homes and transferred to qualifying rescue groups.

Reclaim: Animals reclaimed by their owners after being found as strays or after completing quarantine period.

Euthanasia: Animals humanely euthanized at the Center. This includes animals that reside at the Animal Center and animals surrendered by their owner for euthanasia for medical or behavioral reasons.

NOTE: The data included in the graphs below represent all types of animals except for the data table on page 7. That table only includes dogs and cats, which represent the vast majority of the animals we deal with.

News and Significant Events

- **Home For the Holidays \$25 Adoption Special:** From December 1-23, Wake County offered a deep discount on our normal adoption fees and offered all dogs and cats for \$25, including surgery. The discount was paid for by donations and sponsorships already collected. The discount resulted in a significant increase in foot traffic at the shelter and record adoption numbers. Through the program, 310 animals were adopted and 92 went into our FTA program, to be adopted in a few months.

Outreach and Promotions

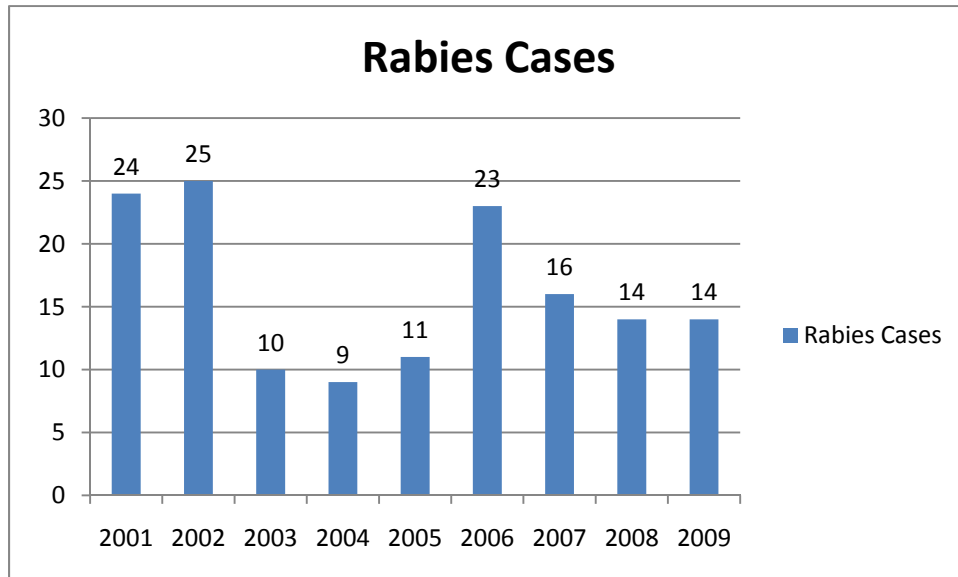
- Wake County staff and volunteers spent two cold Saturdays at the Cary Ole Time Winter Fest in Cary and the Wake Forest Christmas parade in December. The primary focus of both events was promoting the Animal Center and its programs.

Expansion Construction Update

- The new HVAC units arrived at the Center as a late Christmas present and crews erect the steel skeleton of the new dog room just after Thanksgiving. One key completion is the expansion of the exhaust ductwork in the existing dog kennels to provide additional ventilation.

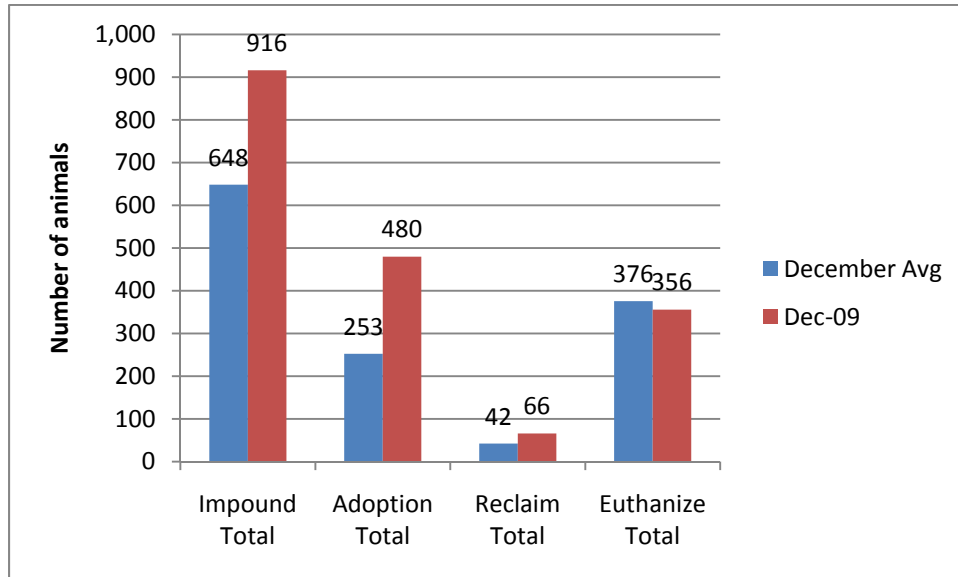


Rabies: Positive confirmed laboratory cases

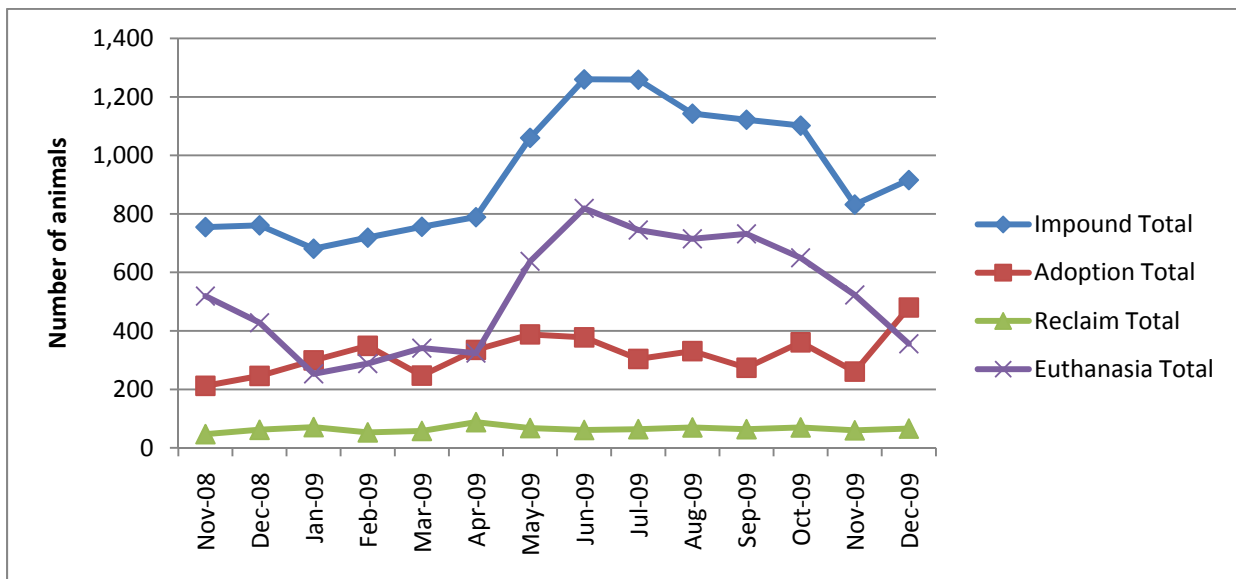


n=1 December 2009; year to date cases=14; Wake County averages 16.5 laboratory confirmed cases each year; since 2001, raccoon tests account for 56% of all species that test positive in Wake County; rabies is enzootic (present in wildlife) in all NC counties

Animal Center Statistical Summary

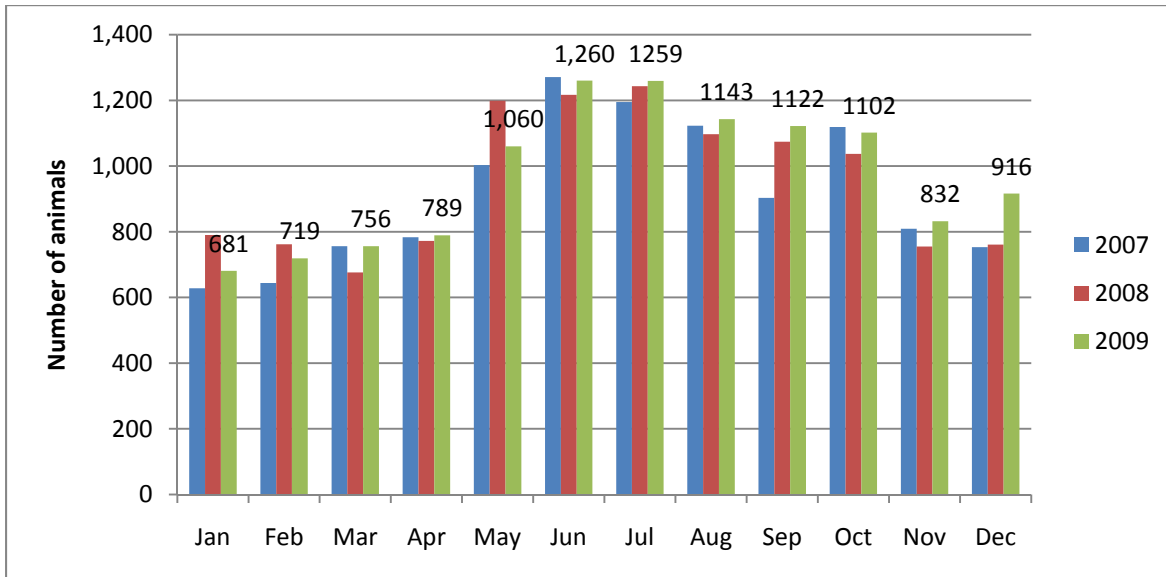


December 09 Intake is 41% higher than the average, Adoptions are 90% higher, Reclaims are 57% higher and euthanasia is 6% lower than the average. The adoption special at the shelter resulted in a significantly higher adoption rate and a very low euthanasia rate. Intake was also high, but there is no significant data to point to a reason. *Note: Averages include data from FY02 until the current month*



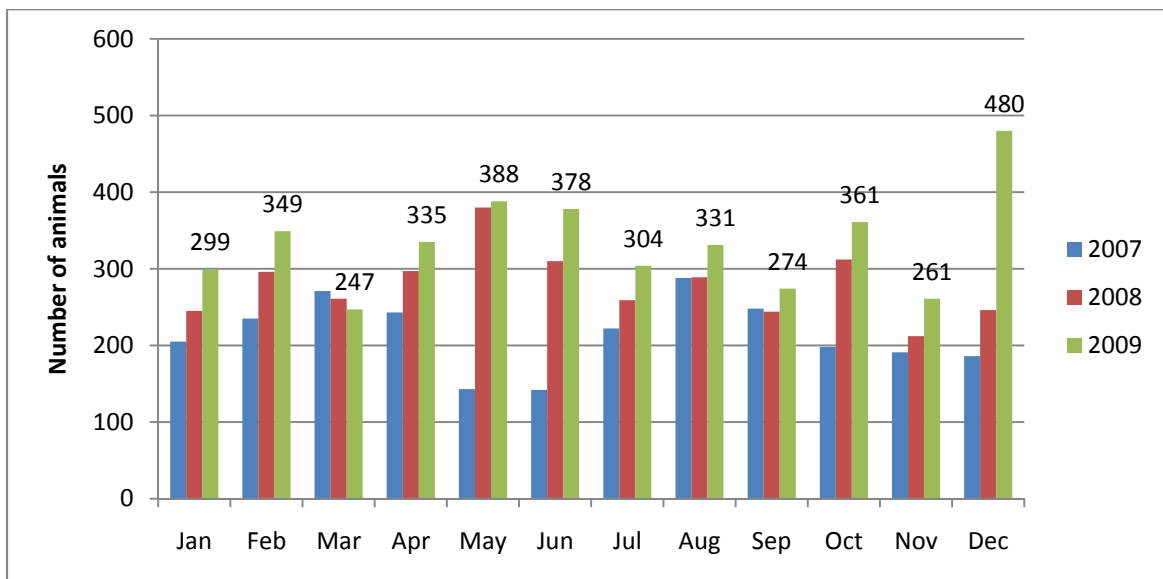
Ebb and Flow of animal intake: As depicted above, animal intake increases significantly in the warm months and drops in the cold months. This is typically associated with an increase in puppy and kitten litters in warm months. Adoptions do not normally increase to match the increase in intake so euthanasia rates can increase with intake.

Animal Center Intake monthly comparison



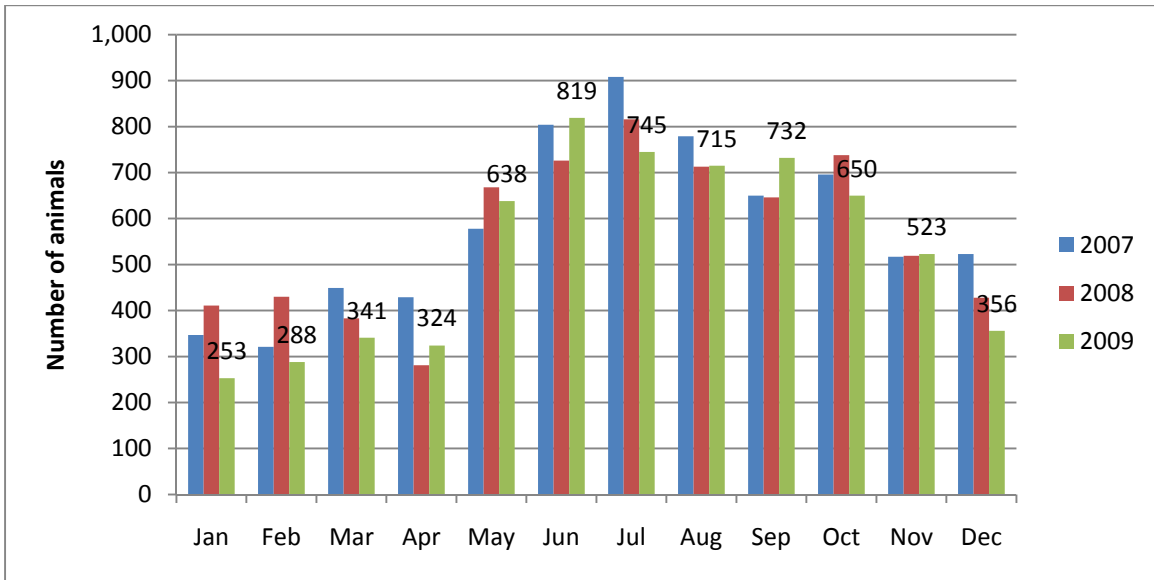
n=916; Intake is 20% higher than December 2008. We do not have any hard data to understand why there was such an increase in intake this month. Owner surrenders only accounted for 35% of the intake this month.

Adoption Monthly Comparison



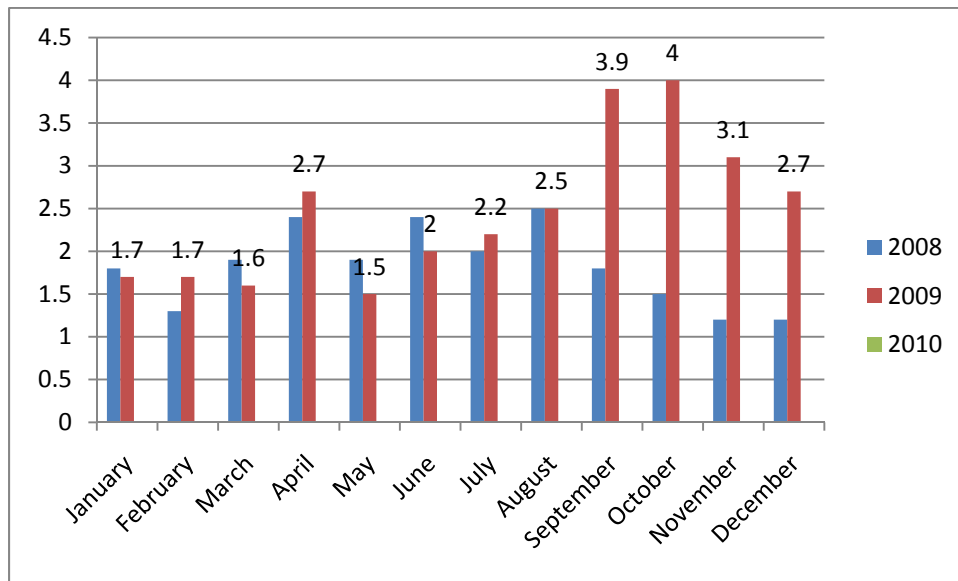
n=480; data represents a combination of typical adoptions to new families and transfers to partner rescue groups; 95% increase in adoptions over December 2008 and a record for one month at the Wake County Animal Center.

Euthanasia monthly comparison



n=356; the euthanasia numbers are less than 20% lower than this month last year.

Volunteer hours by FTE



n=2.7 FTEs; Volunteers logged enough hours this month to equal 2.71 extra full time employees. This includes dog walking, socialization, off-site events and work promoting animals in the community, just to name a few.

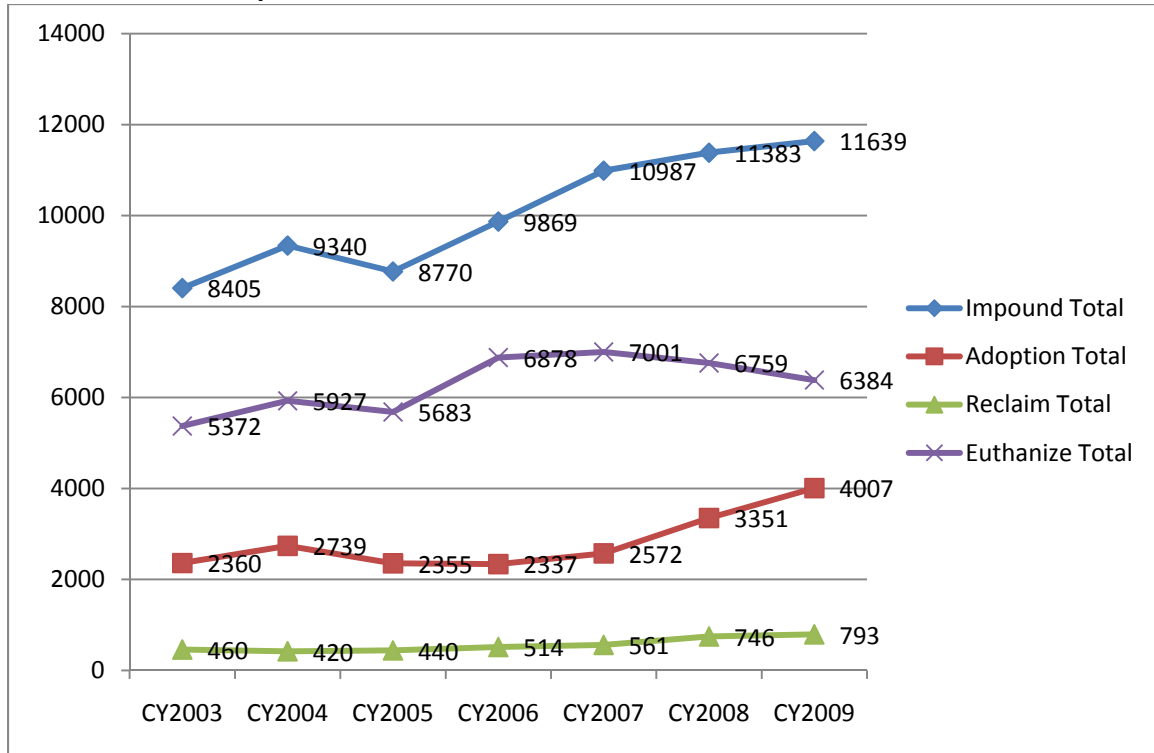
Animal Shelter Statistics for period *December 1-31, 2009*

Year to year comparison is over the same timeframe each year.	2007-2008		2008-2009		2009-2010 (YTD)					
	Count	Perf.	Count	Perf.	1st Q	Oct-09	Nov-09	Dec-10	YTD	Performance
Impound Dog	2,413		2,734		1492	461	414	517	2884	
Impound Cat	3,273		3,064		1944	614	409	374	3341	
Impound Total	5,686		5,798		3436	1075	823	891	6225	
Garner Animal Control Intake					96	36	28	26	186	
Cary Animal Control Intake					54	16	25	18	113	
Adoption Dog	834	34.6%	1,105	40.4%	651	247	181	283	1362	47.2%
Adoption Cat	377	11.5%	392	12.8%	217	98	72	178	565	16.9%
Adoption Total	1,211	21.3%	1,497	25.8%	868	345	253	461	1927	31.0%
Reclaim Dog	267	11.1%	328	12.0%	171	68	54	57	350	12.1%
Reclaim Cat	37	1.1%	39	1.3%	27	1	5	9	42	1.3%
Reclaim Total	304	5.3%	367	6.3%	198	69	59	66	392	6.3%
Euthanize Dog	1,137	47.1%	1,170	42.8%	569	168	178	132	1047	36.3%
Euthanize Cat	2,877	87.9%	2,609	85.2%	1605	481	343	220	2649	79.3%
Euthanize Total	4,014	70.6%	3,779	65.2%	2174	649	521	352	3696	59.4%

FOSTER-TO-ADOPT PROGRAM	FY 09	Jul-09	Aug-09	Sep-09	Oct-09	Nov-09	Dec-09	FY10
Animals Placed into Program	188	44	50	61	38	51	93	525
Adoptions Completed		20	46	38	44	25	31	204
Animals Returned		0	2	4	1	1	4	12
Animals Remaining in FTA								309

*The large chart above represents both a listing of monthly performance and a comparison to the last two years. The same amount of months is compared for each year. For example, it shows that in FY08 at this time of the year, we had adopted out 21.3% of animals, in FY09 25.8% and this fiscal year 31% have been adopted.

Calendar Year Comparison



The Wake County Animal Center is very excited to see the constantly improving numbers for both animal adoptions and euthanasia. As seen in the graph above, around 2007, euthanasia numbers started to decrease and the adoptions increased while animal intake rose. In the past, intake and euthanasia were paired together while adoptions remained flat.

2009 Calendar Year data

Impound Dog	5480	Reclaim Dog	700
Impound Cat	5771	Reclaim Cat	88
Impound Other	388	Reclaim Other	5
Impound Total	11639	Reclaim Total	793
Adoption Dog	2719	Euthanize Dog	1895
Adoption Cat	1040	Euthanize Cat	4416
Adoption Other	248	Euthanize Other	73
Adoption Total	4007	Euthanize Total	6384

Media and Off-Site Adoptions

Animal Disposition Statistics for Off-Site Mobile Adoption Events

Wake County staff did not participate in any off-site adoption events this month.

Animal Disposition Statistics for On-Air Events

December 2009

Animals On Air	11
Animals carried over from previous	0
Animal Adopted	9
Animals Transferred or Rescued	1
Animals Euthanized	0
Animals Carried over to next month	1

81.8% adopted, 0% in foster,
0% euthanized

Foster Programs

Wake County Foster Program Application Statistics
December 2009

Incoming Foster Applications		Application Status	
Application Source (year-to-date)		Applications Received (YTD)	237
Internet	194	Applications Approved- Active (YTD)	56
<i>Email</i>	5	Applications Approved –Inactive	34
<i>Other</i>	39	Applications Denied (YTD)	14
Total	237	Applications Withdrawn (YTD)	36
Applicant Sources (year-to-date)		Applications Under Review/In-Process	21
General Public	209	Application Filed	76
Wake County Employees	28		
Total	237	Foster Homes Active this Month	28

Wake County Foster Program Animal Fostering Statistics
December 2009

Animals Currently In Foster Care		Animals Placed In Foster This Period	
Bird	2	Rabbit	1
Cat	9	Cat	3
Dog	4	Dog	9
Kitten	18	Kitten	12
Puppy	10	Puppy	14
Rabbit	4	Other	0
Rodent	3		
Other	0		
TOTAL	50	TOTAL	39
Total Animals Placed in Foster Care (Since July 2008)			570
Total Animals Placed In Foster Care (FY 10 year-to-date)			191