

Definitions

Intake: Animals admitted to the Animal Center. These include animals surrendered by the general public, picked up by Animal Control and animals born at the Center.

Adoption: Includes animals adopted to new homes and transferred to qualifying rescue groups.

Reclaim: Animals reclaimed by their owners after being found as strays or after completing quarantine period.

Euthanasia: Animals humanely euthanized at the Center. This includes animals that reside at the Animal Center and animals surrendered by their owner for euthanasia for medical or behavioral reasons.

NOTE: The data included in the graphs below represent all types of animals except for the data table on page 7. That table only includes dogs and cats, which represent the vast majority of the animals we deal with.

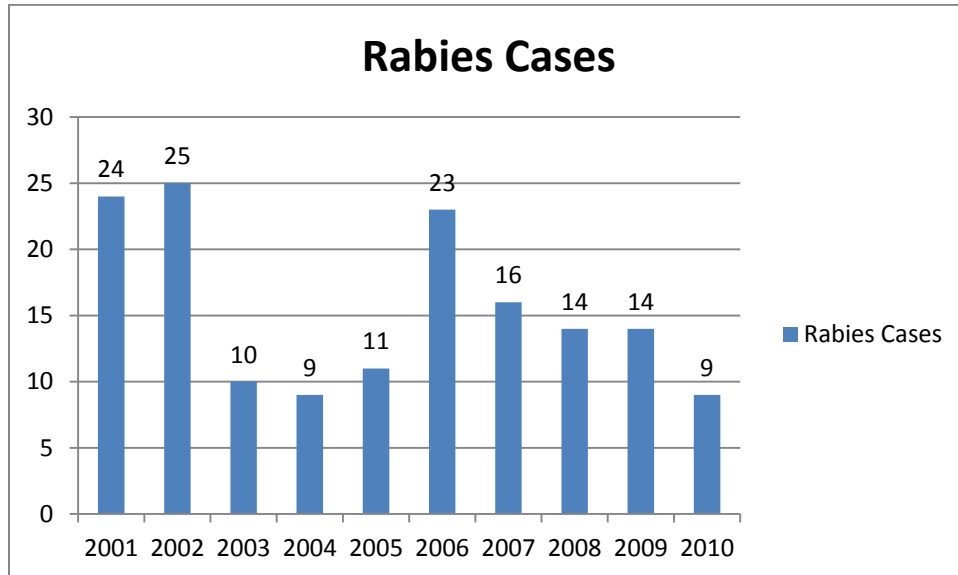
Animal Center News

The only news for the Center this month is the construction and all of the interviews we held for the positions we are adding to accommodate all of the new space.

Expansion Construction Update

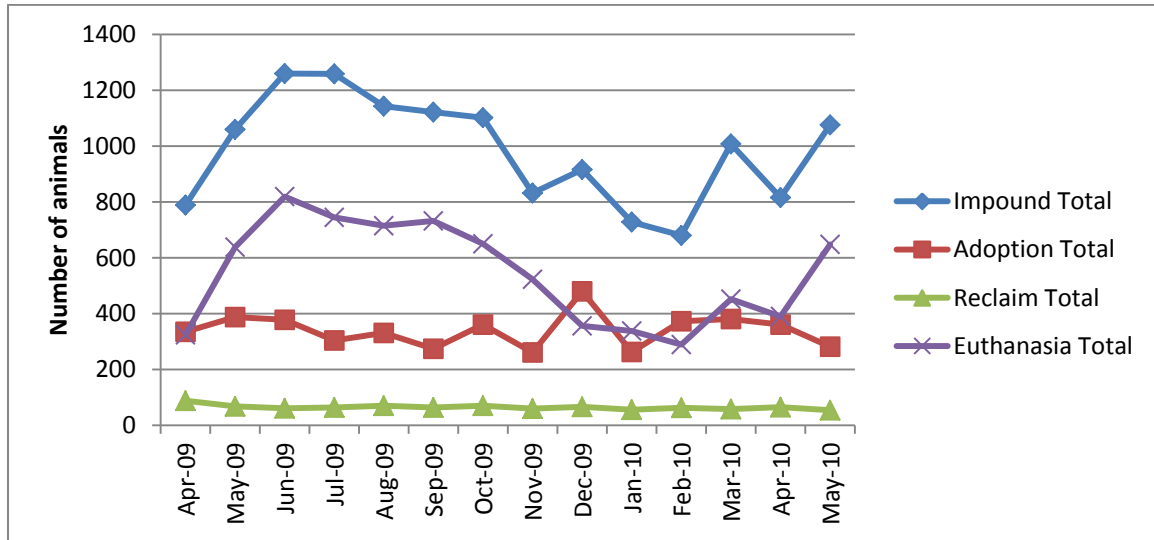
The new addition was punched this month and we have started on the renovation work. We have been stepping all over each other to make room for the construction work, but it will be nice when it is finished. We also moved cats into three of the four new rooms and all residents are very happy with their new kennels.

Rabies: Positive confirmed laboratory cases



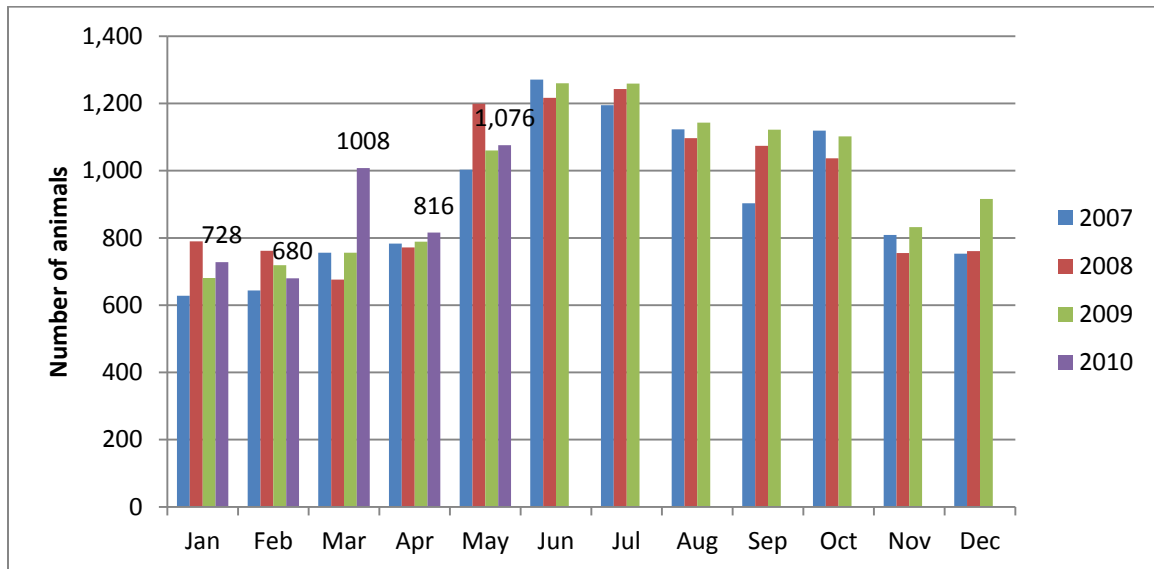
n=3 May 2010; year to date cases=9; Wake County averages 15.8 laboratory confirmed cases each year; since 2001, raccoon tests account for 56% of all species that test positive in Wake County; rabies is enzootic (present in wildlife) in all NC counties

Animal Center Statistical Summary



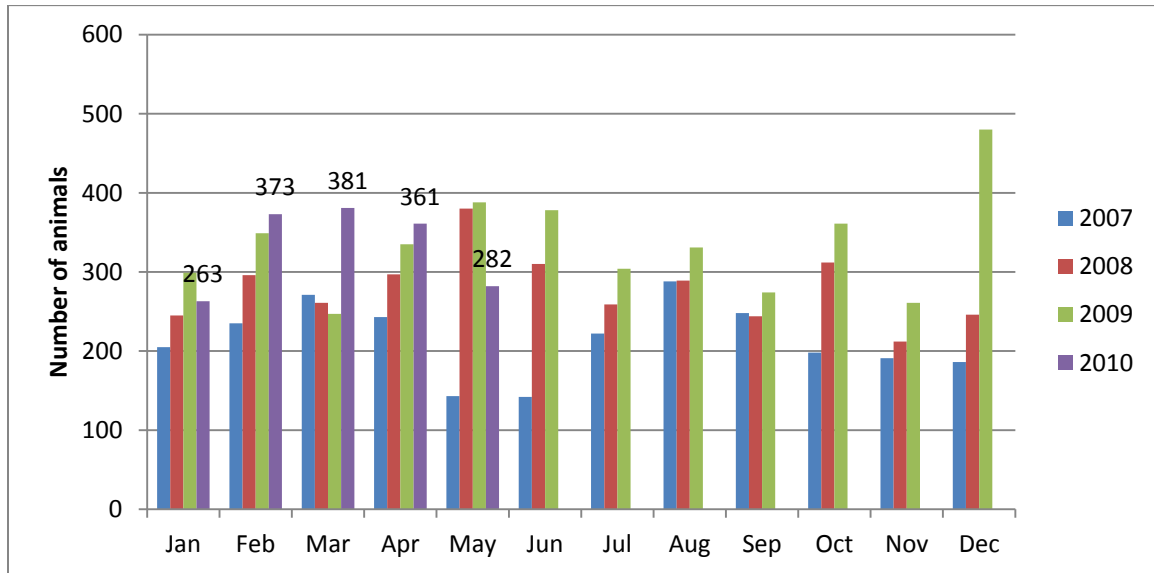
Ebb and Flow of animal intake: As depicted above, animal intake increases significantly in the warm months and drops in the cold months. This is typically associated with an increase in puppy and kitten litters in warm months. Adoptions do not normally increase to match the increase in intake so euthanasia rates can increase with intake.

Animal Center Intake monthly comparison



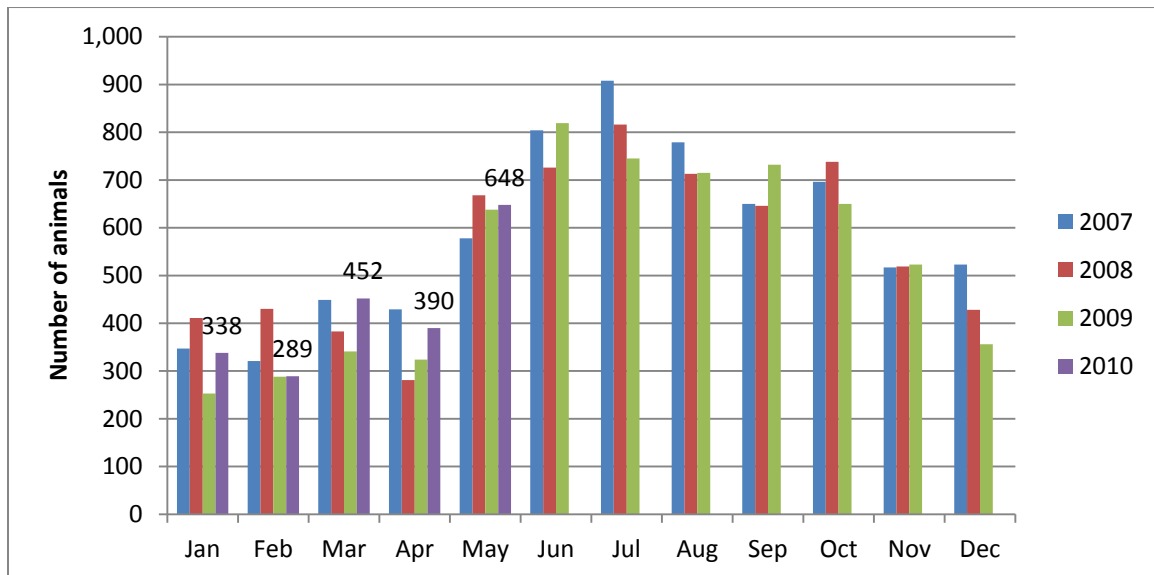
n=1076; Intake is 1.5% higher than May 2009.

Adoption Monthly Comparison



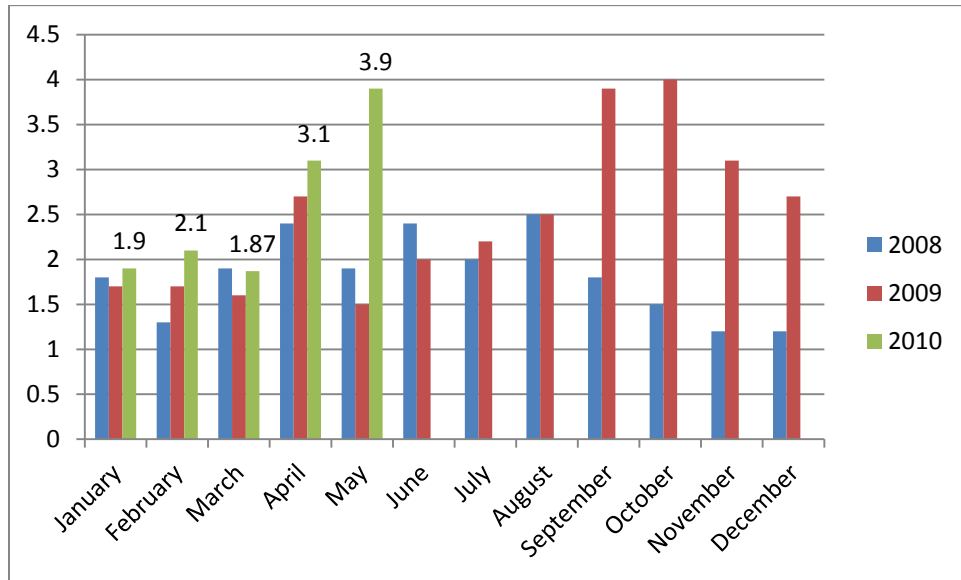
n=282; data represents a combination of typical adoptions to new families and transfers to partner rescue groups; 27% decrease in adoptions over May 2009. We believe the construction work at the Center has some part to play in the reduced numbers this month. Parking and access was cumbersome this month which may have turned some people away.

Euthanasia monthly comparison



n=648; the euthanasia numbers are less than 1.5% higher than this month last year.

Volunteer hours by FTE



n=3.9 FTEs; Volunteers logged enough hours this month to equal 3.9 extra full time employees. This includes dog walking, socialization, off-site events and work promoting animals in the community, just to name a few.

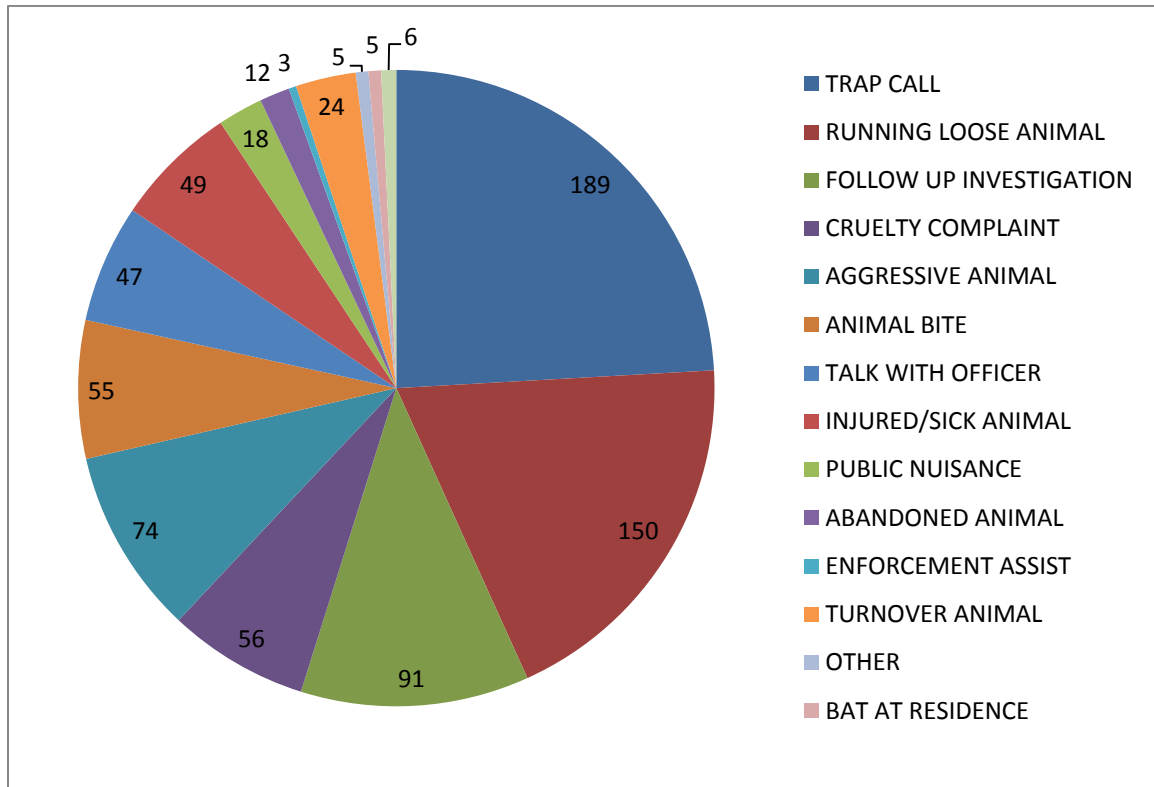
Animal Shelter Statistics for period **May1-31, 2010**

Year to year comparison is over the same timeframe each year.	2007-2008		2008-2009		2009-2010 (YTD)						
	Count	Perf.	Count	Perf.	1st Q	2nd Q	3rd Q	Apr-10	May-10	YTD	Performance
Impound Dog	4,585		4,803		1492	1392	1287	384	446	5001	
Impound Cat	5,153		4,810		1944	1397	1059	415	604	5419	
Impound Total	9,738		9,613		3436	2789	2346	799	1050	10420	
Garner Animal Control Intake					96	90	73	32	31	322	
Cary Animal Control Intake					54	59	46	22	29	210	
Adoption Dog	1,846	40.3%	2,203	45.9%	651	711	677	214	199	2452	49.0%
Adoption Cat	774	15.0%	770	16.0%	217	348	296	129	67	1057	19.5%
Adoption Total	2,620	26.9%	2,973	30.9%	868	1059	973	343	266	3509	33.7%
Reclaim Dog	548	12.0%	626	13.0%	171	179	150	57	45	602	12.0%
Reclaim Cat	72	1.4%	76	1.6%	27	15	24	8	8	82	1.5%
Reclaim Total	620	6.4%	702	7.3%	198	194	174	65	53	684	6.6%
Euthanize Dog	2,020	44.1%	1,780	37.1%	569	478	347	136	151	1681	33.6%
Euthanize Cat	4,131	80.2%	3,818	79.4%	1605	1044	718	246	490	4103	75.7%
Euthanize Total	6,151	63.2%	5,598	58.2%	2174	1522	1065	382	641	5784	55.5%

FOSTER-TO-ADOPT PROGRAM	FY 09	1st Q	2nd Q	3rd Q	Apr-10	May-10	FY10
Animals Placed into Program	188	155	182	151	61	83	820
Adoptions Completed		104	100	142	74	41	461
Animals Returned		6	6	13	1	3	29
Animals Remaining in FTA							330

***The large chart above represents both a listing of monthly performance and a comparison to the last two years. The same amount of months is compared for each year. For example, it shows that in FY08 at this time of the year, we had adopted out 24.1% of animals, in FY09 28.8% and this fiscal year 33.4% have been adopted.**

Animal Control Field Data



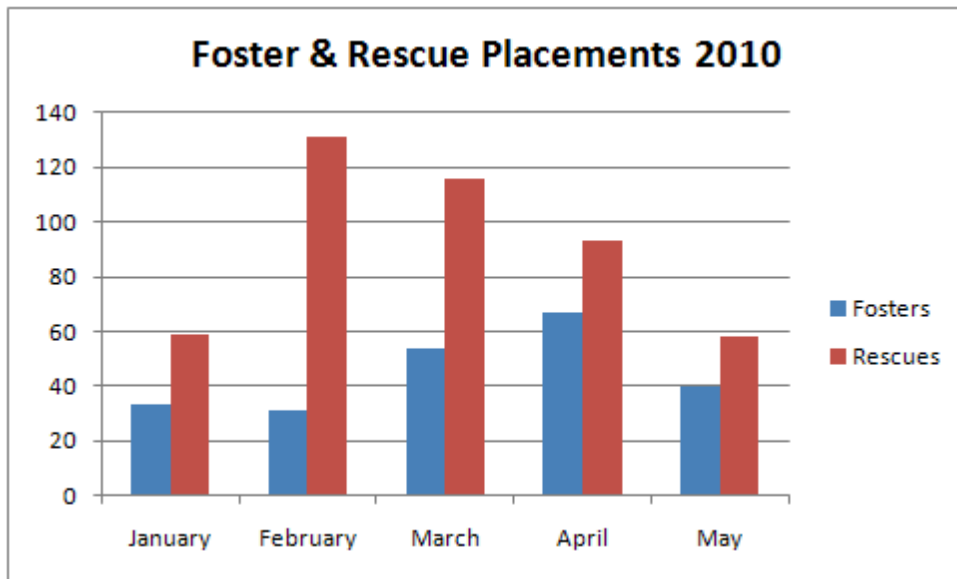
Wake County Animal Control responded to 784 requests for service in May 2010. Complaints for stray or loose animals continues to contribute to about half of all calls.

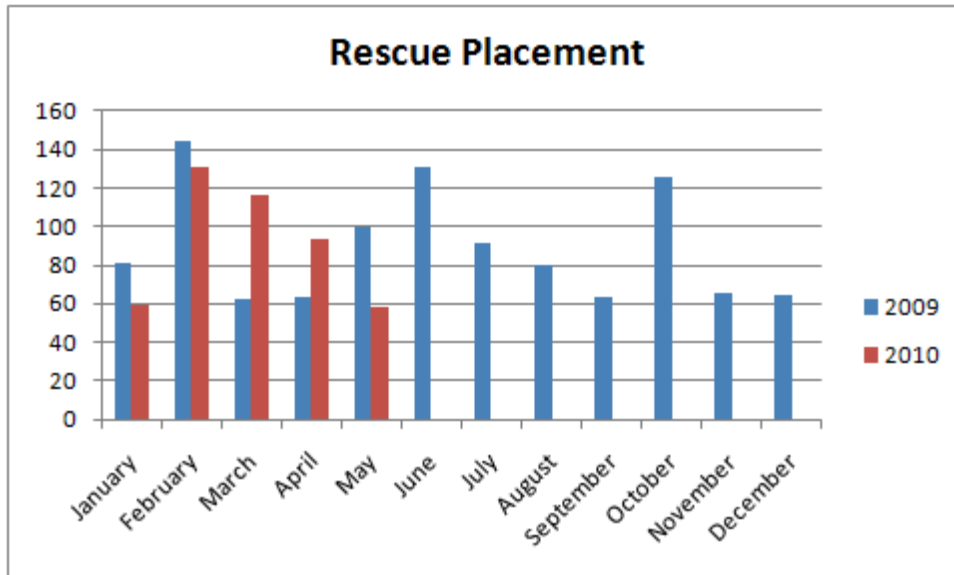
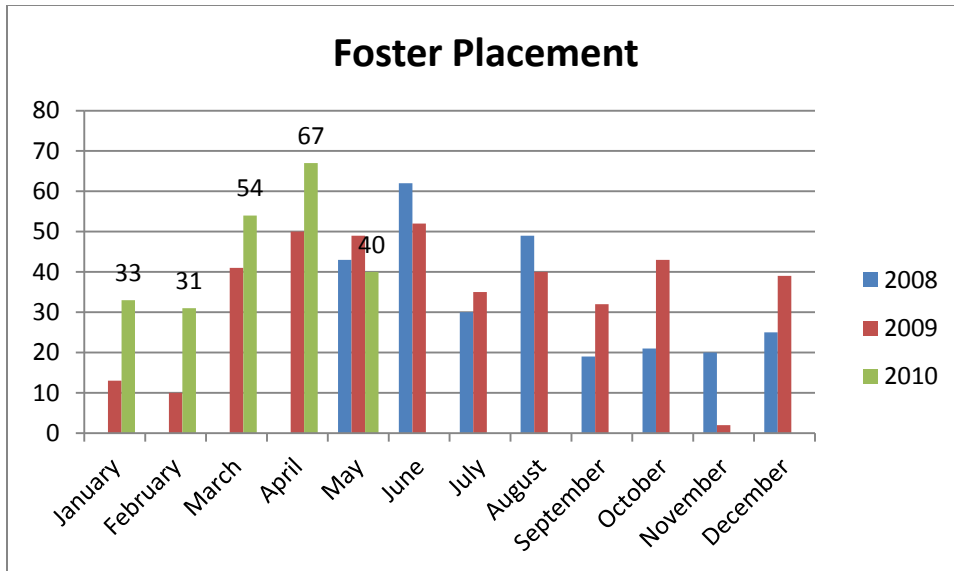
Foster and Rescue Report

During the month of May, forty (40) animals were placed into foster care.

During the month of May, fifty-eight (58) animals were placed into the care of partnering rescue groups and shelters. As to be expected, the number of animals placed into rescue care this month has decreased primarily due to our rescue partners reaching maximum capacity. The volume of animals received by the Center is a mirror of the pet overpopulation problem in our community, when our intake numbers increase, so do those of our rescue partners. We continue to be appreciative of all the efforts made by our rescue partners to take animals from our Center and we look forward to continued mutual success.

Additionally, we are happy to report that over the past three months, since February 2010, we've added seven new rescue groups to our rescue program. These new additions have taken ten (10) animals from the WCAC. We are quite excited about the addition of these groups and others to our program and we look forward to future new partners.





Shelter/Rescues	Cats Transferred
SPCA of Wake County	12
2 Paws Up	2
Faulkner Animal Rescue	2
Safe Haven for Cats	1
Shelter/Rescues	Dogs Transferred
SPCA of Wake County	14
Saving Grace for Animals	8
A New Leash on Life	4
Carolina Border Collie Rescue	2
Faulkner Animal Rescue and Recovery	2
Hav-A-Hart Pet Rescue	2