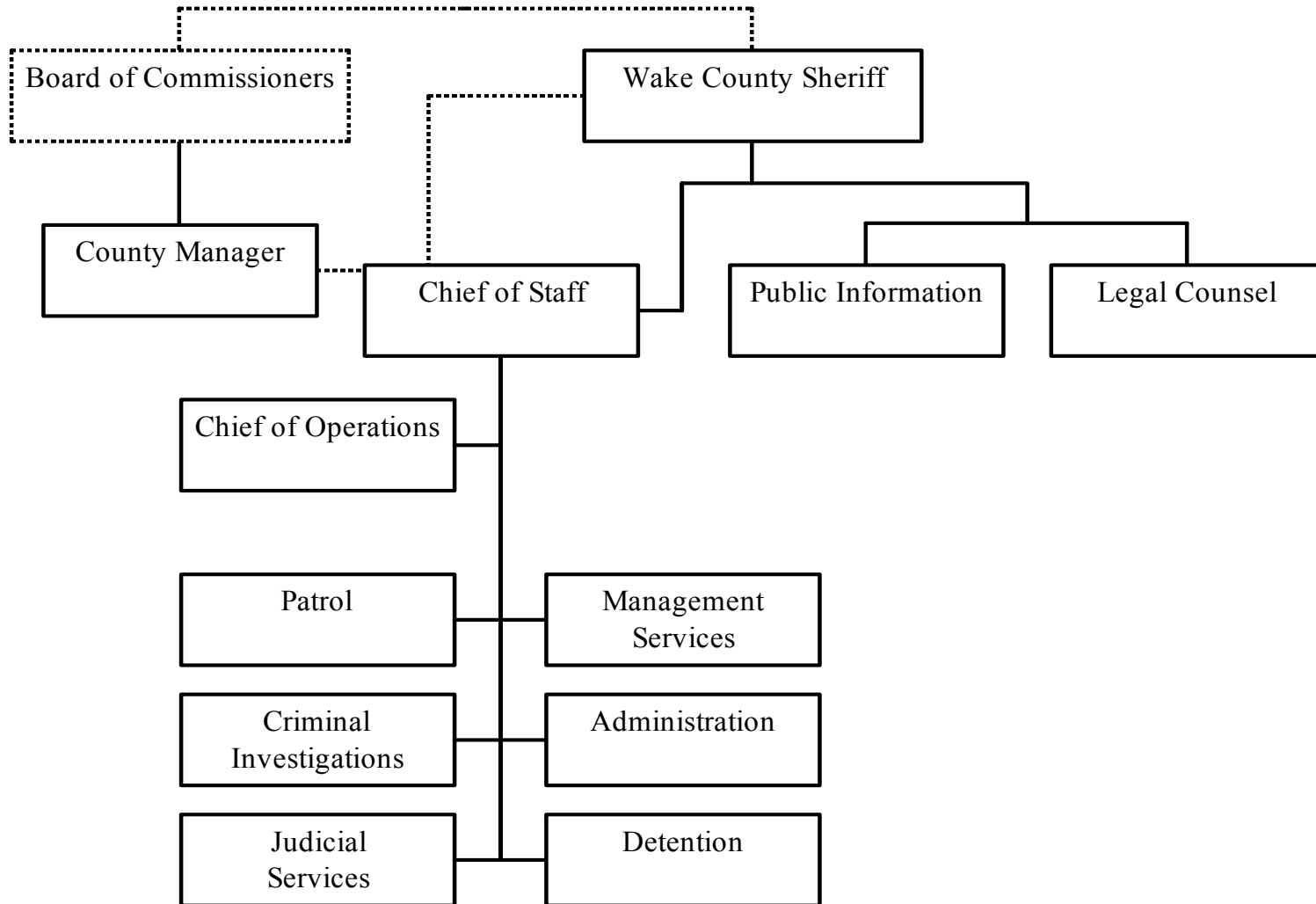


Office of the Sheriff



Office of the Sheriff

Department Summary

		FY 2003 Actual	FY 2004 Adopted Budget	FY 2004 Current Budget	FY 2005 Adopted Budget
Personal Services	\$	28,414,004	32,056,502	32,949,245	33,776,827
Operating Expenses		7,713,760	8,254,044	8,895,782	9,947,433
Capital Outlay		476,240	83,981	156,981	278,000
Expenditure Totals	\$	36,604,004	40,394,527	42,002,008	44,002,260
Intergovernmental Revenue	\$	861,745	905,166	1,136,216	751,110
Fees & Other Revenues		2,901,500	2,830,338	2,956,338	3,524,500
Revenue Totals	\$	3,763,245	3,735,504	4,092,554	4,275,610
Number of FTEs		578.00	648.00	648.00	648.00

Department Description

Philosophy of the Sheriff: "Serving the citizens is a privilege and not a right. It is our duty to serve all of the citizens of this county to the best of our ability, and serving these citizens is and will always be the purpose of our organization."

The Office of Sheriff is a constitutional office in North Carolina. The Sheriff is an official elected by the people of Wake County and is the chief law enforcement officer for the County. The Sheriff has jurisdiction throughout the county including both the incorporated and unincorporated areas and provides primary law enforcement for the unincorporated areas of the county. As the chief law enforcement officer for the County, the Sheriff provides requested assistance and support to other

local law enforcement departments and to state and federal law enforcement agencies.

List of Major Services

- Law enforcement
- Safety and security in the Wake County schools
- Detention and incarceration of inmates sentenced or awaiting trial
- Service of judicial process
- Courthouse security
- Other miscellaneous duties

Office of the Sheriff

Division Summary -Law Enforcement

		FY 2003	FY 2004	FY 2004	FY 2005
		Actual	Adopted	Current	Adopted
			Budget	Budget	Budget
Personal Services	\$	18,026,855	19,086,283	19,883,102	20,545,761
Operating Expenses		3,712,898	4,501,856	4,685,787	5,408,508
Capital Outlay		204,355	72,000	63,000	178,000
Expenditure Totals	\$	21,944,108	23,660,139	24,631,889	26,132,269
Intergovernmental Revenue	\$	1,009,386	905,166	1,086,216	756,110
Fees & Other Revenues		788,627	713,338	713,338	746,500
Revenue Totals	\$	1,798,013	1,618,504	1,799,554	1,502,610
Number of FTEs		372.00	374.00	374.00	374.00

Law enforcement. The Sheriff direct law enforcement duties include patrolling, responding to civil disaster events, preventing crime, serving domestic violence protection orders, investigating violations of the law, and apprehending law violators. The Sheriff also provides radio communications, evidence, and property control services related to the administration of law enforcement activities and transports all involuntarily committed persons to a mental health institution located outside of Wake County. The warrant squad of the patrol division serves civil and criminal warrants for arrest.

Safety and security in the Wake County schools. The Sheriff has the responsibility of providing school resource officers for high schools and middle schools in the unincorporated areas of the county. Additional school resource officers are also provided for middle schools in Raleigh

and Wake Forest. These school resource officers are a vital element in the safety and security of students, faculty and staff of the Wake County Public School System.

Service of judicial process. The Sheriff, as the enforcement arm of the North Carolina General Court of Justice, is responsible for serving civil and criminal process issued by the courts. The service of this process includes arresting persons and bringing them before the courts, seizing and selling personal and real property to satisfy court judgments and evicting tenants to return possession of premises to landlords.

Courthouse security. The Sheriff is responsible for courtroom security in the twenty-one District and Superior courtrooms in Wake County. Courtroom security includes the physical security of the courtroom, the

Office of the Sheriff

Law Enforcement (continued)

personal safety of all who attend court proceedings, and the control and supervision of persons in custody when brought for court appearances. In addition to courtroom security, the Sheriff is responsible, in coordination with General Services Administration, for the physical security of the entire courthouse.

Other Miscellaneous Duties. A number of other duties have been imposed as statutory duties of the Sheriff. These duties include: issuing pistol purchase permits and concealed handgun carry permits, registering sexual offenders and predators residing in Wake County, registering video poker games located within the county, and issuing parade and picketing permits for the unincorporated areas of the county.

Office Priorities

- Expand K-9 Team.
- Add a second Special Response Team to respond to school emergencies and high-risk crisis events and to provide additional emphasis in high-crime areas.
- Expand home fleet to judicial services deputies to improve productivity.
- Fine-tune transition from VHF to 800 MHz radio communications system.
- Continue and expand Citizens' Well Check program for senior and disabled citizens.
- Reduce received-to-arrived response time.
- Increase patrol coverage and decrease officer/citizen ratio in unincorporated areas.
- Increase traffic safety.
- Expand and enhance inter-agency cooperation with and between Wake County law enforcement and Public Safety agencies and with state and federal law enforcement agencies.
- Expand and enhance community outreach efforts and community

involvement.

- Implement new technology to provide for state-of-the-art system to meet growing needs of office.
- Identify and choose best alternative for law enforcement and detention training facilities.
- Implement strategy to maintain full employment through hiring process and hold training academy.
- Develop enhanced three year business plan.

Highlights

- Reduced turnaround time (received to returned) for civil process.
- Increased patrol coverage in unincorporated areas.
- Increased traffic safety through development and implementation of Impact Team.
- Expanded and enhanced inter-agency cooperation with and between Wake County law enforcement and public safety agencies and with state and federal law enforcement agencies.
- Improved terrorism, gang, and street-level drug activity planning and preparation.
- Expanded and enhanced crime prevention to include community outreach and involvement.
- Implemented Citizens' Well Check program for senior and disabled citizens.
- Implemented K-9 Team.
- Implemented Special Response Team to respond to school emergencies and high-risk crisis events and to provide additional emphasis in high-crime areas.
- Began transition from VHF to 800MHz radio communications system.
- Staffed the Southern Regional Center with investigators.

Office of the Sheriff

Division Summary - Detention

		FY 2003 Actual	FY 2004 Adopted Budget	FY 2004 Current Budget	FY 2005 Adopted Budget
Personal Services	\$	10,268,143	12,970,219	13,066,143	13,231,066
Operating Expenses		4,201,353	3,752,188	4,209,995	4,538,925
Capital Outlay		236	11,981	93,981	100,000
Expenditure Totals	\$	14,469,732	16,734,388	17,370,119	17,869,991
Intergovernmental Revenue	\$	45,850	0	50,000	0
Fees & Other Revenues		2,705,588	2,117,000	2,243,000	2,773,000
Revenue Totals	\$	2,751,438	2,117,000	2,293,000	2,773,000
Number of FTEs		206.00	274.00	274.00	274.00

Detention The Sheriff is responsible for keeping and maintaining two separate detention facilities: the Public Safety Center Detention Facility and the Hammond Road Detention Annex. The Sheriff also transports prisoners to and from court appearances, to the various units of the North Carolina Department of Correction across the state, and to and from other sheriffs' offices in the state. Medical care for the inmates is provided by a full-time physician employed by the Sheriff, by a full-time nursing staff on duty twenty-four hours a day, and through contracts with external medical providers.

Office Priorities

- Control the cost of inmate medical care.
- Develop strategies to reduce average number of days in custody despite a continued decline in the cases eligible for pretrial release

and a continued increase in the county's unemployment rate.

Highlights

- Developed and implemented Detention Transport Team.
- Fully utilized and staffed the 240 bed Hammond Road Detention Annex, resulting in a 22% reduction in over-capacity at the Public Safety Center facility.
- Outsourced detention commissary operations.
- Improved revenue collections from Department of Corrections for State detainees.

Office of the Sheriff

Performance Measures	FY 2003 Actual	FY 2004 Actual	FY 2005 Objective
Law Enforcement			
Service calls	50,868	50,734	51,000
Response time (received to dispatch)	n/a	6.5	6
Response time (dispatch to arrival)	9.1	10.4	8
Arrests made	5,251	5,556	6,100
Warrants, Summons, Orders for Arrest	9,219	9,750	9,800
Civil process received	79,408	83,765	88,000
Execution and judgments collected	\$2,502,437	\$4,222,374	\$4,500,000
Regulatory Duty			
Concealed handgun permits processed	1042	514	600
Pistol permits processed	12,430	11,386	12,000
Sex offenders registered	79	98	100
Detention			
Average daily population	890	1,059	1,200
Admissions from Intake	n/a	17,385	19,000
Law Enforcement - Investigations	Cases Worked	Cases Cleared	FY 2005 Objective
Regular Investigations	3,763	1,046	30%
Drugs and Vice	364	191	55%
Totals	4,127	1,237	35%